



CorePro MainsFit (UL Type-B) T8

15T8/COR/48-835/MF20/G/120-347V 25/1

The CorePro MainsFit (UL Type B) lamps are designed to be the perfect retrofit solution to move from traditional fluorescent lamps to energy saving LEDs. This ballast bypass lamp has everything needed built into the lamp with proven energy savings, long life (up to 50k hours), surge suppression and industry leading safety features. All lamps in the CorePro MainsFit family are double-ended to help simplify the installation. In addition, all lamps meet the Philips standards for light quality so that end users will be in a comfortable environment regardless of the CorePro MainsFit lamp type.

Product data

| General Information | |
|---------------------------------------|---------------------------------|
| Cap-Base | G13 [Medium Bi-Pin Fluorescent] |
| Nominal lifetime | 50,000 hour(s) |
| Switching Cycle | 50,000 |
| Lighting Technology | LED |
| Light Technical | |
| Color Code | 835 [CCT of 3500K] |
| Beam Angle (Nom) | 240 degree(s) |
| Luminous Flux | 2,000 lm |
| Color Designation | White (WH) |
| Correlated Color Temperature (Nom) | 3500 K |
| Luminous Efficacy (rated) (Nom) | 133.00 lm/W |
| Color Consistency | <6 |
| Color rendering index (CRI) | 80 |
| LLMF At End Of Nominal Lifetime (Nom) | 70 % |

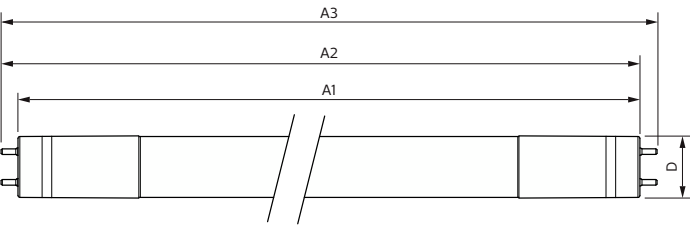
| Operating and Electrical | |
|---------------------------|---------------------------------------|
| Line Frequency | 50 to 60 Hz |
| Input Frequency | 50 to 60 Hz |
| Power Consumption | 15 W |
| Lamp Current (Max) | 145 mA |
| Lamp Current (Min) | 50 mA |
| Starting Time (Nom) | 0.5 s |
| Warm-up time to 60% light | 0.5 s |
| Power Factor (Fraction) | 0.9 |
| Voltage (Nom) | 120-347 V |
| UL Type | TLED_Type B; UL classified double end |
| Temperature | |
| T-Case Maximum (Nom) | 70 °C |

CorePro MainsFit (UL Type-B) T8

| | |
|---------------------------|---|
| Controls and Dimming | |
| Dimmable | Limited |
| Mechanical and Housing | |
| Bulb Finish | Frosted |
| Bulb Material | Glass |
| Product Length | 1,200 mm |
| Bulb Shape | T8 |
| Net Weight (Piece) | 0.220 kg |
| Approval and Application | |
| Energy Saving Product | Yes |
| Approval Marks | RoHS compliance UL certificate DLC compliance |
| EU RoHS compliant | Yes |
| Ambient temperature range | -20 °C to 45 °C |

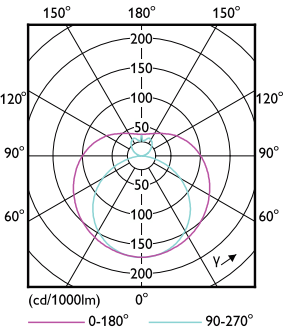
| | |
|-------------------------------------|--------------------------------------|
| Application Conditions | |
| can it be used in closed luminaires | Yes |
| Product Data | |
| Order product name | 15T8/COR/48-835/MF20/G/120-347V 25/1 |
| Full product name | 15T8/COR/48-835/MF20/G/120-347V 25/1 |
| Order code | 929003523304 |
| Material Nr. (12NC) | 929003523304 |
| Numerator - Quantity Per Pack | 1 |
| EAN/UPC - Product/Case | 046677579289 |
| Numerator - Packs per outer box | 25 |
| EAN/UPC - Case | 50046677579284 |

Dimensional drawing

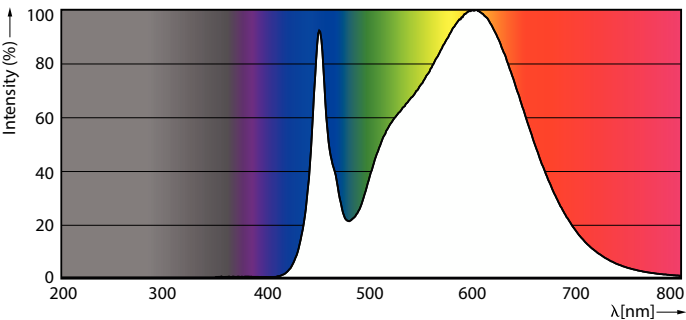


| Product | D1 | D2 | A1 | A2 | A3 |
|--|---------|-------|------------|------------|------------|
| 15T8/COR/48-835/MF20/G/ 120-347V 25/1 | 25.7 mm | 29 mm | 1,198.2 mm | 1,205.3 mm | 1,212.4 mm |

Photometric data



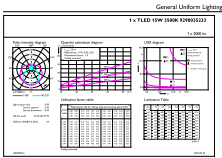
Light Distribution Diagram - 15T8/COR/48-835/MF20/G/120-347V 25/1



Spectral Power Distribution Colour - 15T8/COR/48-835/MF20/G/120-347V 25/1

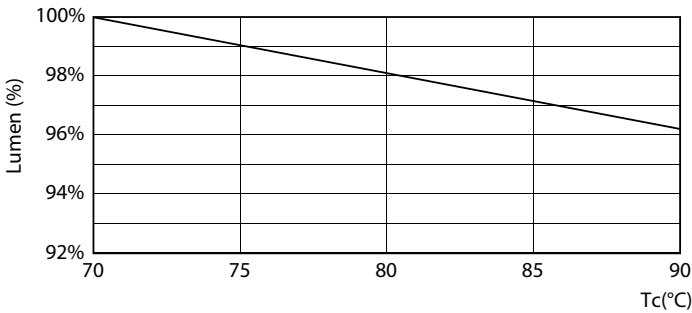
CorePro MainsFit (UL Type-B) T8

Photometric data

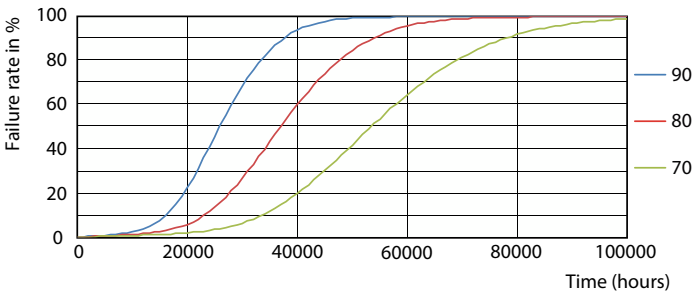


General Uniform Lighting - 15T8/COR/48-835/MF20/G/120-347V 25/1

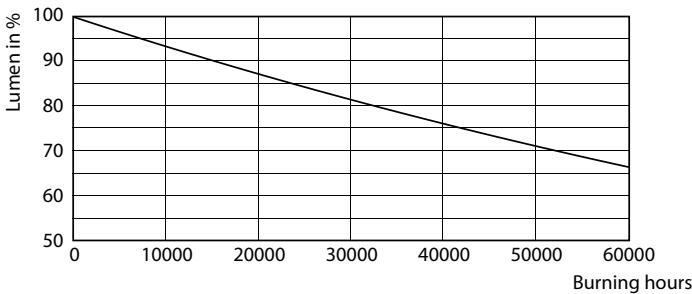
Lifetime



Life Expectancy Diagram



Lumen Maintenance Diagram - 15T8/COR/48-835/MF20/G/120-347V 25/1



LEDtube 50K 7090 FailureRate-LED

Lumen Maintenance Diagram - 15T8/COR/48-835/MF20/G/120-347V 25/1

CorePro MainsFit (UL Type-B) T8

Lifetime



LifetimeVsTc

