



CorePro MainsFit (UL Type-B) T8

15T8/COR/48-840/MF21/G/120-347V 25/1

The CorePro MainsFit (UL Type B) lamps are designed to be the perfect retrofit solution to move from traditional fluorescent lamps to energy saving LEDs. This ballast bypass lamp has everything needed built into the lamp with proven energy savings, long life (up to 50k hours), surge suppression and industry leading safety features. All lamps in the CorePro MainsFit family are double-ended to help simplify the installation. In addition, all lamps meet the Philips standards for light quality so that end users will be in a comfortable environment regardless of the CorePro MainsFit lamp type.

Product data

General Information	
Cap-Base	G13 [Medium Bi-Pin Fluorescent]
Nominal lifetime	50,000 hour(s)
Switching Cycle	50,000
Lighting Technology	LED
Light Technical	
Color Code	840 [CCT of 4000K]
Beam Angle (Nom)	240 degree(s)
Luminous Flux	2,100 lm
Color Designation	Cool White (CW)
Correlated Color Temperature (Nom)	4000 K
Luminous Efficacy (rated) (Nom)	140.00 lm/W
Color Consistency	<6
Color rendering index (CRI)	80
LLMF At End Of Nominal Lifetime (Nom)	70 %

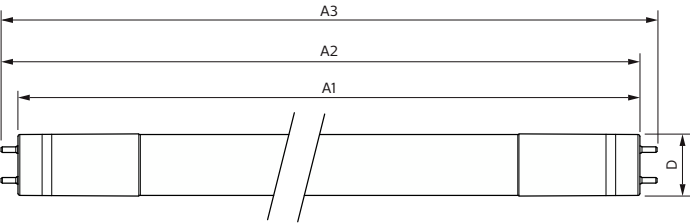
Operating and Electrical	
Line Frequency	50 to 60 Hz
Input Frequency	50 to 60 Hz
Power Consumption	15 W
Lamp Current (Max)	145 mA
Lamp Current (Min)	50 mA
Starting Time (Nom)	0.5 s
Warm-up time to 60% light	0.5 s
Power Factor (Fraction)	0.9
Voltage (Nom)	120-347 V
UL Type	TLED_Type B; UL classified double end
Temperature	
T-Case Maximum (Nom)	70 °C

CorePro MainsFit (UL Type-B) T8

Controls and Dimming	
Dimmable	Limited
Mechanical and Housing	
Bulb Finish	Frosted
Bulb Material	Glass
Product Length	1,200 mm
Bulb Shape	T8
Net Weight (Piece)	0.220 kg
Approval and Application	
Energy Saving Product	Yes
Approval Marks	RoHS compliance UL certificate DLC compliance
EU RoHS compliant	Yes
Ambient temperature range	-20 °C to 45 °C

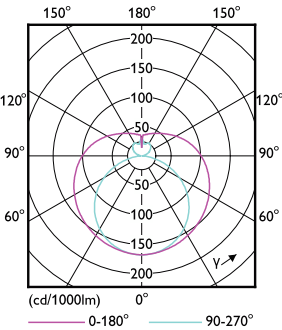
Application Conditions	
can it be used in closed luminaires	Yes
Product Data	
Order product name	15T8/COR/48-840/MF21/G/120-347V 25/1
Full product name	15T8/COR/48-840/MF21/G/120-347V 25/1
Order code	929003523404
Material Nr. (12NC)	929003523404
Numerator - Quantity Per Pack	1
EAN/UPC - Product/Case	046677579296
Numerator - Packs per outer box	25
EAN/UPC - Case	50046677579291

Dimensional drawing

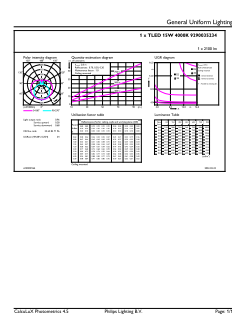


Product	D1	D2	A1	A2	A3
15T8/COR/48-840/MF21/G/ 120-347V 25/1	25.7 mm	29 mm	1,198.2 mm	1,205.3 mm	1,212.4 mm

Photometric data



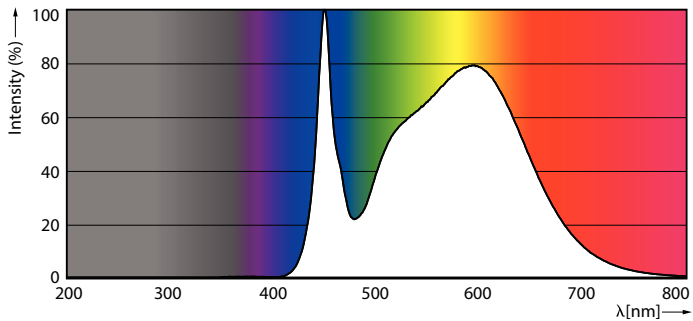
Light Distribution Diagram - 15T8/COR/48-840/MF21/G/120-347V 25/1



General uniform lighting - 15T8/COR/48-840/MF21/G/120-347V 25/1

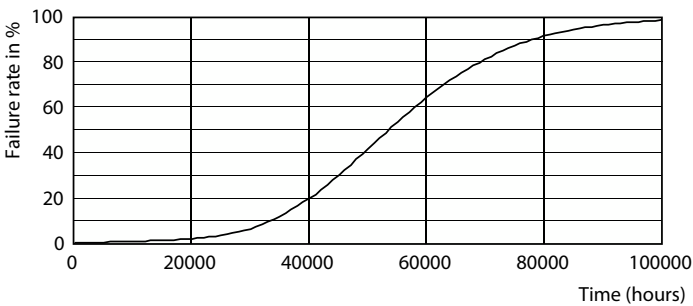
CorePro MainsFit (UL Type-B) T8

Photometric data

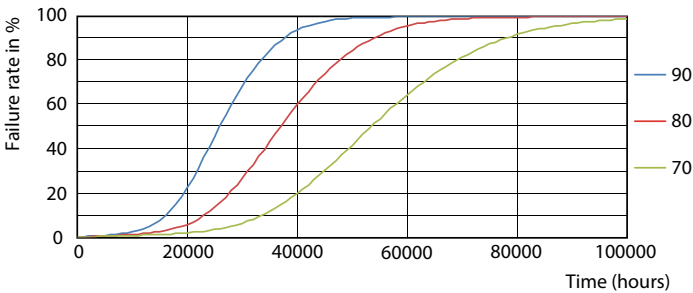


Spectral Power Distribution Colour - 15T8/COR/48-840/MF21/G/120-347V 25/1

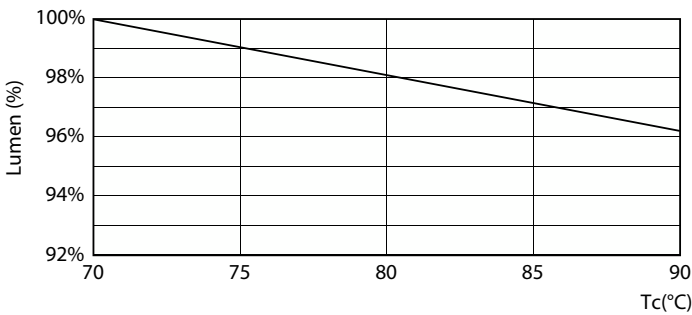
Lifetime



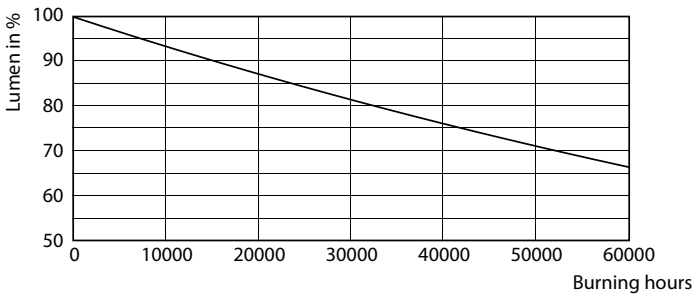
Life Expectancy Diagram



LEDtube 50K 7090 FailureRate-LED



Lumen Maintenance Diagram - 15T8/COR/48-840/MF21/G/120-347V 25/1



Lumen Maintenance Diagram - 15T8/COR/48-840/MF21/G/120-347V 25/1

CorePro MainsFit (UL Type-B) T8

Lifetime



LifetimeVsTc

