



# MasterClass MainsFit (UL Type-B) T8

## 16.5T8/MAS/48-835/MF24/P/DIM 25/1

The MasterClass MainsFit (UL Type B) T8 lamps are designed to be the perfect retrofit solution to move from traditional fluorescent lamps to energy saving LEDs. This ballast bypass lamp has everything needed built into the lamp with proven energy savings, long life (70k hours), surge suppression and industry leading safety features. All lamps in the MasterClass MainsFit family are double-ended to help simplify the installation. In addition, all lamps meet the Philips standards for light quality so that end users will be in a comfortable environment regardless of the MasterClass MainsFit lamp type.

### Product data

General Information	
Cap-Base	G13 [Medium Bi-Pin Fluorescent]
Nominal lifetime	70,000 hour(s)
Switching Cycle	50,000
Lighting Technology	LED
Light Technical	
Color Code	835 [CCT of 3500K]
Beam Angle (Nom)	180 degree(s)
Luminous Flux	2,450 lm
Color Designation	White (WH)
Correlated Color Temperature (Nom)	3500 K
Luminous Efficacy (rated) (Nom)	148.00 lm/W
Color Consistency	6SCDM
Color rendering index (CRI)	80
LLMF At End Of Nominal Lifetime (Nom)	70 %

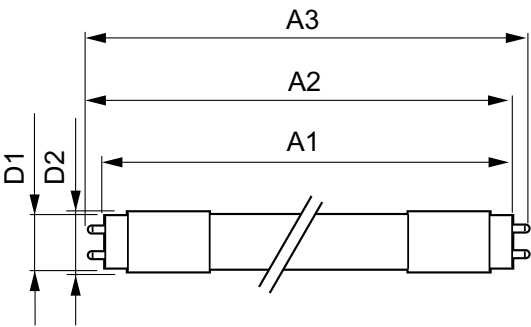
Operating and Electrical	
Line Frequency	50 to 60 Hz
Input Frequency	50 to 60 Hz
Power Consumption	16.5 W
Lamp Current (Max)	144 mA
Lamp Current (Min)	68 mA
Wattage Equivalent	32 W
Starting Time (Nom)	0.5 s
Warm-up time to 60% light	0.5 s
Power Factor (Fraction)	0.9
Voltage (Nom)	120-277 V
UL Type	UL Type B
Temperature	
T-Case Maximum (Nom)	70 °C

MasterClass MainsFit (UL Type-B) T8

Controls and Dimming	
Dimmable	Only with specific dimmers
Mechanical and Housing	
Bulb Finish	Frosted
Bulb Material	Plastic
Product Length	1,200 mm
Bulb Shape	T8
Net Weight (Piece)	0.210 kg
Approval and Application	
Energy Saving Product	Yes
Approval Marks	RoHS compliance UL certificate DLC compliance
EU RoHS compliant	Yes
Ambient temperature range	-20 °C to 45 °C

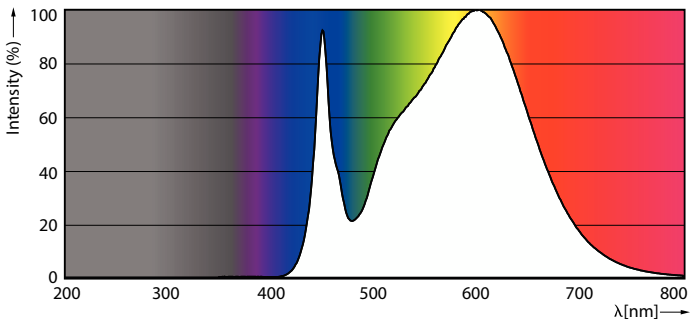
Application Conditions	
can it be used in closed luminaires	Yes
Product Data	
Order product name	16.5T8/MAS/48-835/MF24/P/DIM 25/1
Full product name	16.5T8/MAS/48-835/MF24/P/DIM 25/1
Order code	929003525804
Material Nr. (12NC)	929003525804
Numerator - Quantity Per Pack	1
EAN/UPC - Product/Case	046677579517
Numerator - Packs per outer box	25
EAN/UPC - Case	50046677579512

Dimensional drawing

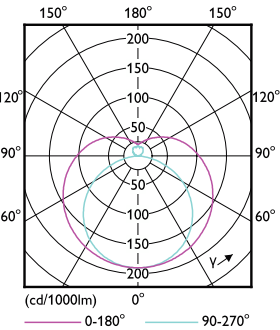


Product	D1	D2	A1	A2	A3
16.5T8/MAS/48-835/ MF24/P/DIM 25/1	25.7 mm	28 mm	1,198.2 mm	1,205.3 mm	1,212.4 mm

Photometric data



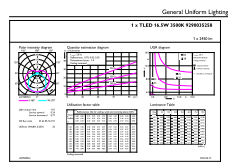
Spectral Power Distribution Colour - 16.5T8/MAS/48-835/MF24/P/DIM 25/1



Light Distribution Diagram - 16.5T8/MAS/48-835/MF24/P/DIM 25/1

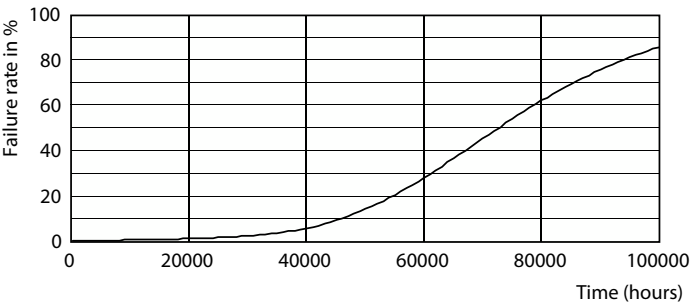
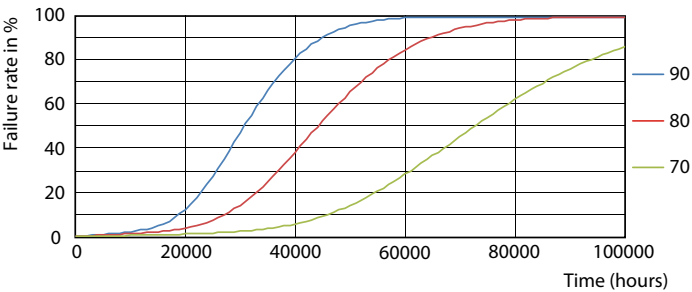
MasterClass MainsFit (UL Type-B) T8

Photometric data

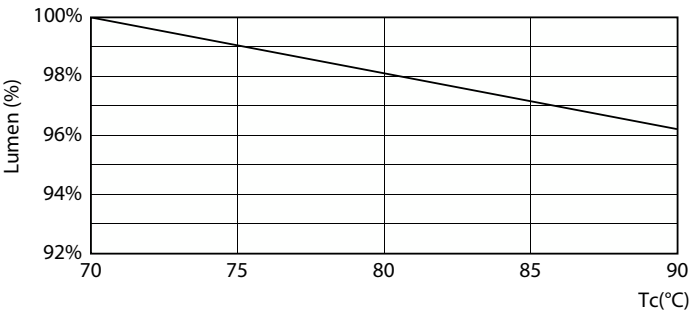


General Uniform Lighting - 16.5T8/MAS/48-835/MF24/P/DIM 25/1

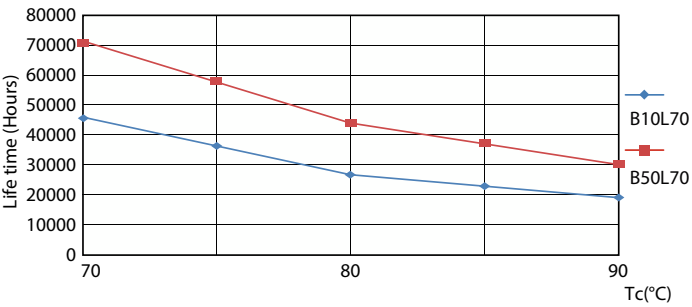
Lifetime



FailureRate



Life Expectancy Diagram

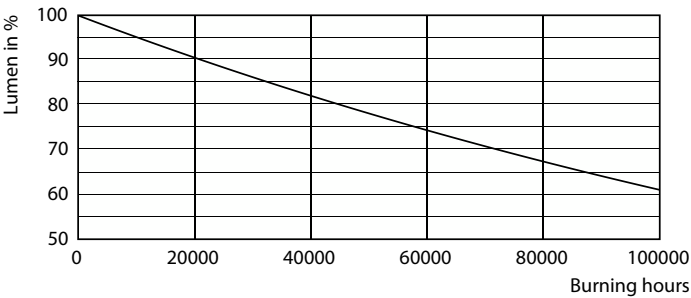


Lumen Maintenance Diagram - 16.5T8/MAS/48-835/MF24/P/DIM 25/1

LifetimeVsTc

# MasterClass MainsFit (UL Type-B) T8

## Lifetime



Lumen Maintenance Diagram - 16.5T8/MAS/48-835/MF24/P/DIM 25/1

