



CorePro LEDtube EM/ Mains



CorePro LEDtube 600mm 8W 865 T8

CorePro, LEDtube, T8, EM/Mains, 600 mm, 8 W, 18W TL-D, 6500 K, 800 lm, CRI 80, 50000 h

The CorePro LEDtube is an affordable LED solution suitable for replacing T8 fluorescent lamps. The product provides a natural lighting effect for use in general lighting applications, as well as instant energy savings – an environmentally friendly solution.

Warnings and Safety

• -

Product data

General Information		Luminous efficacy (rated) (nom.)	
Cap base	G13		100 lm/W
Nominal lifetime	50,000 h	Colour consistency	<6
Switching Cycle	200,000	Colour rendering index (CRI)	80
Lighting Technology	LEDtube	LLMF at end of nominal lifetime (nom.)	70 %
Flux measurement reference	Sphere	Photobiological safety according to EN 62471	RG0
Warranty period	3 years		
Light Technical		Operating and Electrical	
Colour Code	865 [CCT of 6500K]	Line Frequency	50 to 60 Hz
Beam angle (nom.)	240 degree(s)	Input frequency	50 to 60 Hz
Luminous Flux	800 lm	Power Consumption	8 W
Colour designation	Cool Daylight	Lamp current (nom.)	46 mA
Correlated Colour Temperature (Nom)	6500 K	Starting time (nom.)	0.5 s
		Warm-up time to 60% light	0.5 s
		Power Factor (Fraction)	0.9

CorePro LEDtube EM/Mains

Voltage (nom.)	220-240 V
LED alternative to fluorescent lamp power	18W TL-D
Inrush current at mains	4.27
Max. lamp no. on MCB B type 10A — Mains	119
Max. lamp no. on MCB B type 10A – EM ballast without Compensation Capacitor.	154
Max. lamp no. on MCB B type 10A – EM ballast with Compensation Capacitor.	24
Max. lamp no. on MCB B type 16A — Mains	191
Max. lamp no. on MCB B type 16A – EM ballast without Compensation Capacitor.	246
Max. lamp no. on MCB B type 16A – EM ballast with Compensation Capacitor.	39
Ballast Compatibility	EM/Mains

Temperature

T-Case maximum (nom.)	50 °C
-----------------------	-------

Controls and Dimming

Dimmable	No
----------	----

Mechanical and Housing

Lamp Finish	Frosted
Bulb material	Glass
Product length	600 mm
Bulb shape	T8
Net Weight (Piece)	0.120 kg

Approval and Application

Energy Efficiency Class	F
-------------------------	---

Energy-saving product	Yes
Approval marks	RoHS compliance CE marking KEMA Keur certificate
Energy consumption kWh/1,000 hours	8 kWh
EPREL Registration Number	1827701
CE mark	Yes
EU RoHS compliant	Yes
Flickering value (PstLM)	1
Stroboscopic effect	0.4
Ambient temperature range	-20 to +45 °C

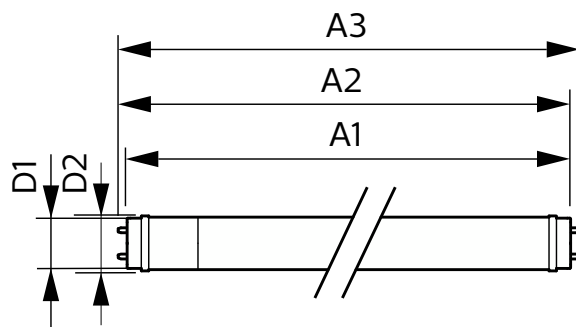
Application Conditions

Can it be used in closed luminaires	Yes
Wireless Technology	Not applicable

Product Data

Order product name	CorePro LEDtube 600mm 8W 865 T8
Full product name	CorePro LEDtube 600mm 8W 865 T8
Full EOC	871951445979300
Order code	929003547302
Material no. (12 NC)	929003547302
Numerator – quantity per pack	1
EAN/UPC – Product/Case	8719514459793
Numerator – packs per outer box	20
EAN/UPC – Case	8719514459809

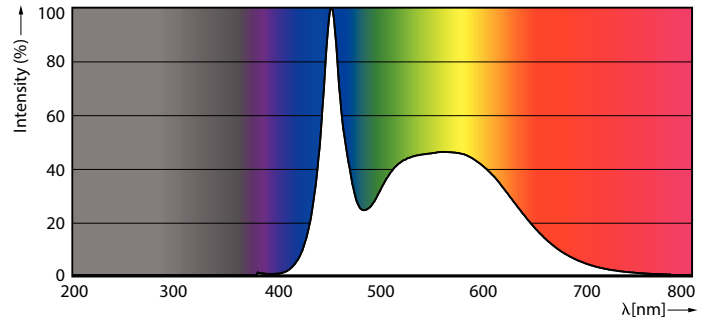
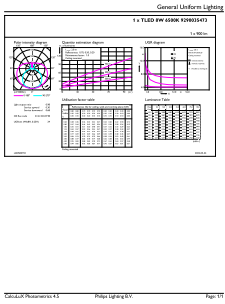
Dimensional drawing



Product	D1	D2	A1	A2	A3
CorePro LEDtube 600mm 8W 865 T8	25.7 mm	28 mm	588.5 mm	595.5 mm	602.5 mm

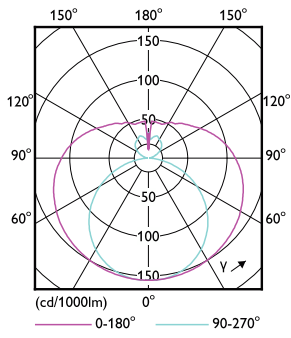
CorePro LEDtube EM/Mains

Photometric data



General uniform lighting - CorePro LEDtube 600mm 8W 865 T8

Spectral Power Distribution Colour - CorePro LEDtube 600mm 8W 865 T8

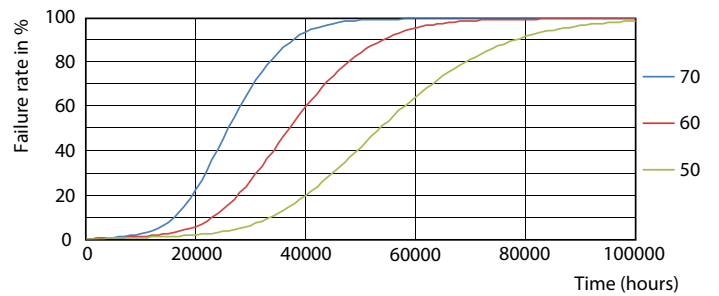


Light Distribution Diagram - CorePro LEDtube 600mm 8W 865 T8

Lifetime



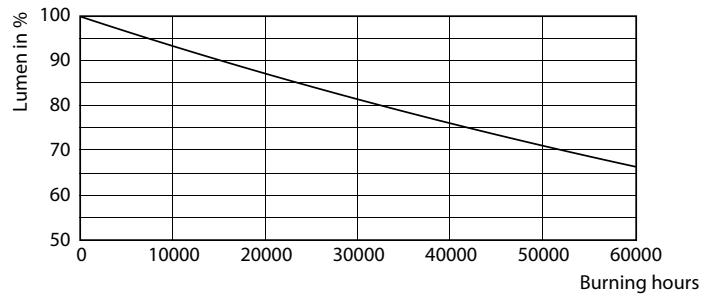
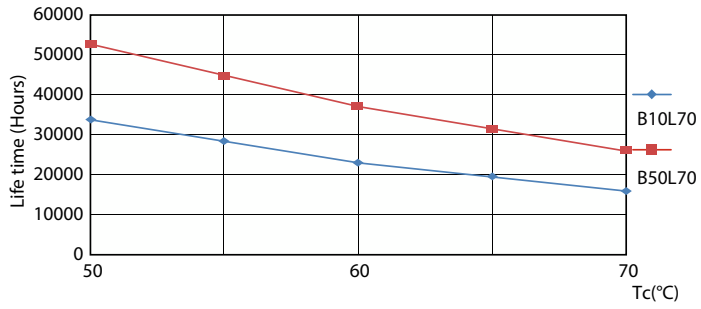
Life Expectancy Diagram



FailureRate

CorePro LEDtube EM/Mains

Lifetime



LifetimeVsTc

Lumen Maintenance Diagram - CorePro LEDtube 600mm 8W 865 T8

