



CorePro LED PLT 4P



CorePro LED PLT HF 15W 830 4P GX24q-3

CorePro, LED, PL-T, HF, 141 mm, 15 W, 32W PL-T, 3000 K, 1620 lm, CRI 82, 30000 h

The CorePro LED PLT 4P integrates a LED light source into a traditional fluorescent form factor. This product is the ideal solution for uplampping in general lighting applications: it meets basic lighting requirements, offers significant energy savings, and is environmentally friendly.

Product data

General Information	
Cap base	GX24Q-3 Rotatable end-cap
Nominal lifetime	30,000 h
Switching Cycle	200,000
Lighting Technology	LED
Flux measurement reference	Sphere
Warranty period	3 years
Light Technical	
Colour Code	830 [CCT of 3000K]
Beam angle (nom.)	120 degree(s)
Luminous Flux	1,620 lm
Colour designation	White (WH)
Correlated Colour Temperature (Nom)	3000 K
Luminous efficacy (rated) (nom.)	108 lm/W
Colour consistency	<6
Colour rendering index (CRI)	82
LLMF at end of nominal lifetime (nom.)	70 %

Photobiological safety according to EN 62471	RG1
Operating and Electrical	
Line Frequency	20K-80K Hz
Input frequency	20 K-80 K Hz
Power Consumption	15 W
Lamp current (max.)	400 mA
Lamp current (min.)	250 mA
Starting time (nom.)	0.5 s
Warm-up time to 60% light	0.5 s
Power Factor (Fraction)	0.9
Voltage (nom.)	20-60 V
LED alternative to fluorescent lamp power	32W PL-T
Inrush current at mains	-
Max. lamp no. on MCB B type 10A – Mains	-
Max. lamp no. on MCB B type 10A – EM ballast without Compensation Capacitor.	-
Max. lamp no. on MCB B type 10A – EM ballast with Compensation Capacitor.	-

CorePro LED PLT 4P

Max. lamp no. on MCB B type 16A — Mains	-
Max. lamp no. on MCB B type 16A – EM ballast without Compensation Capacitor.	-
Max. lamp no. on MCB B type 16A – EM ballast with Compensation Capacitor.	-
Ballast Compatibility	HF

Temperature

T-Case maximum (nom.)	70 °C
-----------------------	-------

Controls and Dimming

Dimmable	No
----------	----

Mechanical and Housing

Lamp Finish	Frosted
Bulb material	Plastic
Product length	141 mm
Bulb shape	PL-T
Net Weight (Piece)	0.129 kg

Approval and Application

Energy Efficiency Class	F
Energy-saving product	Yes
Approval marks	RoHS compliance KEMA Keur certificate

Energy consumption kWh/1,000 hours	15 kWh
EPREL Registration Number	1361424
CE mark	Yes
EU RoHS compliant	Yes
Ambient temperature range	-20°C to 35°C

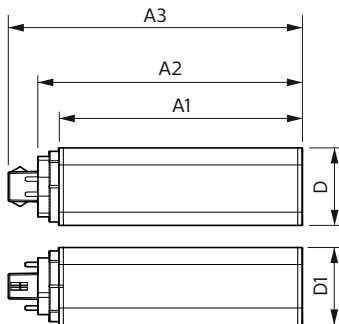
Application Conditions

Wireless Technology	Not applicable
---------------------	----------------

Product Data

Order product name	CorePro LED PLT HF 15W 830 4P GX24q-3
Full product name	CorePro LED PLT HF 15W 830 4P GX24q-3
Full EOC	871951448784000
Order code	929003576702
Material no. (12 NC)	929003576702
Numerator – quantity per pack	1
EAN/UPC – Product/Case	8719514487840
Numerator – packs per outer box	20
EAN/UPC - Case	8719514487857

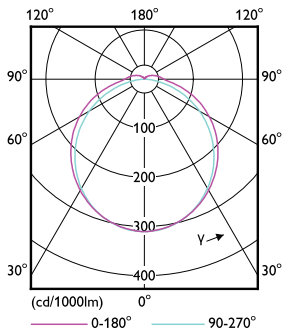
Dimensional drawing



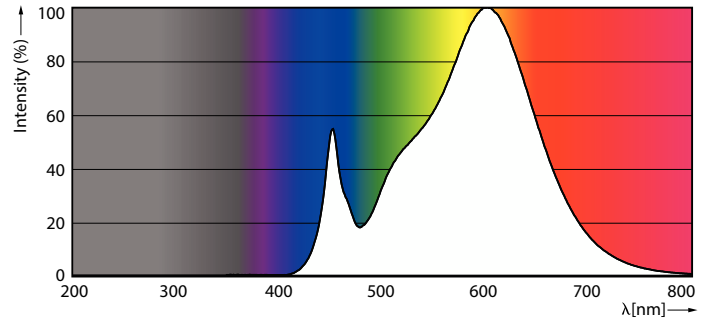
Product	D1	D2	A1	A2	A3
CorePro LED PLT HF 15W 830 4P GX24q-3	42 mm	42 mm	129 mm	141 mm	156 mm

CorePro LED PLT 4P

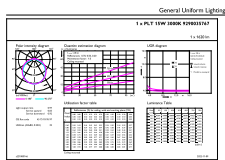
Photometric data



Light Distribution Diagram - CorePro LED PLT HF 15W 830 4P GX24q-3

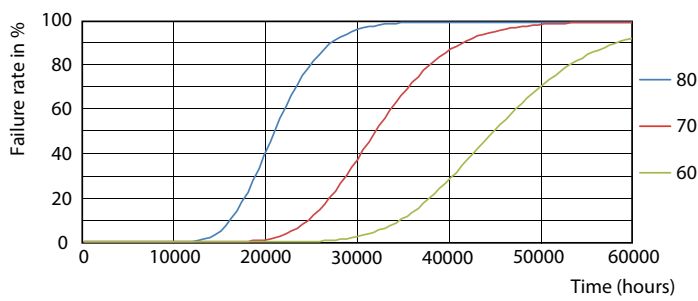


Spectral Power Distribution Colour - CorePro LED PLT HF 15W 830 4P GX24q-3

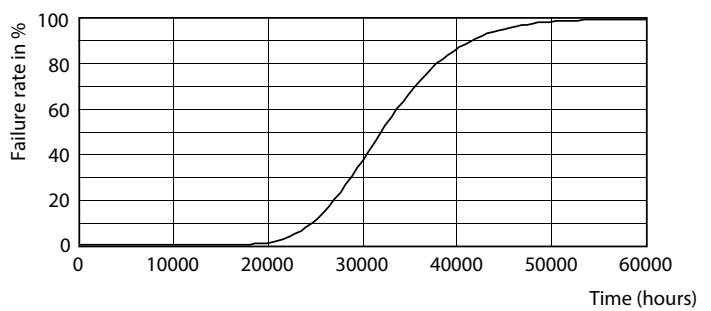


General uniform lighting - CorePro LED PLT HF 15W 830 4P GX24q-3

Lifetime



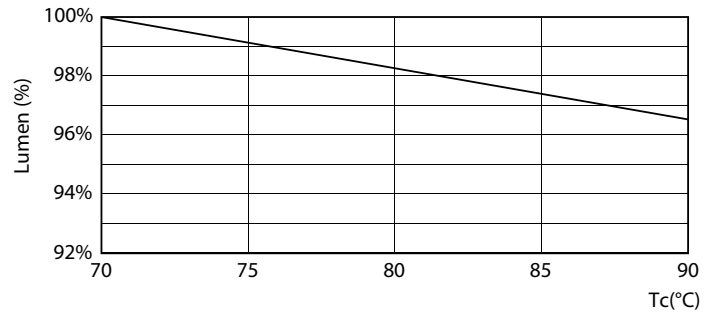
FailureRate



Life Expectancy Diagram

CorePro LED PLT 4P

Lifetime



LifetimeVsTc

Lumen Maintenance Diagram - CorePro LED PLT HF 15W 830 4P GX24q-3



Lumen Maintenance Diagram - CorePro LED PLT HF 15W 830 4P GX24q-3

