



CorePro LED PLL



CorePro LED PLL HF 8W 830 4P 2G11

CorePro, LED, PL-L, HF, 217 mm, 8 W, 18W PL-L, 3000 K, 960 lm, CRI 80, 30000 h

Philips CorePro LED PLL is the ideal uplamping solution for downlights & luminaires in a wide range of general lighting applications. It integrates a LED light source into a traditional fluorescent form factor to offer superb energy savings over a lifetime that's twice as long as fluorescent alternatives.

Product data

General Information	
Cap base	2G11
Nominal lifetime	30,000 h
Switching Cycle	50,000
Lighting Technology	LED
Flux measurement reference	Sphere
Warranty period	3 years
Light Technical	
Colour Code	830 [CCT of 3000K]
Beam angle (nom.)	160 degree(s)
Luminous Flux	960 lm
Colour designation	White (WH)
Correlated Colour Temperature (Nom)	3000 K
Luminous efficacy (rated) (nom.)	120 lm/W
Colour consistency	<6
Colour rendering index (CRI)	80
LLMF at end of nominal lifetime (nom.)	70 %

Photobiological safety according to EN 62471	RGO
Operating and Electrical	
Line Frequency	20K-80K Hz
Input frequency	20 K-80 K Hz
Power Consumption	8 W
Lamp current (max.)	500 mA
Lamp current (min.)	150 mA
Starting time (nom.)	0.5 s
Warm-up time to 60% light	0.5 s
Power Factor (Fraction)	0.9
Voltage (nom.)	20-60 V
LED alternative to fluorescent lamp power	18W PL-L
Inrush current at mains	-
Max. lamp no. on MCB B type 10A — Mains	-
Max. lamp no. on MCB B type 10A – EM ballast without Compensation Capacitor.	-
Max. lamp no. on MCB B type 10A – EM ballast with Compensation Capacitor.	-

CorePro LED PLL

Max. lamp no. on MCB B type 16A — Mains	-
Max. lamp no. on MCB B type 16A – EM ballast without Compensation Capacitor.	-
Max. lamp no. on MCB B type 16A – EM ballast with Compensation Capacitor.	-
Ballast Compatibility	HF

Temperature

T-Case maximum (nom.)	70 °C
-----------------------	-------

Controls and Dimming

Dimmable	No
----------	----

Mechanical and Housing

Lamp Finish	Frosted
Bulb material	Glass
Product length	217 mm
Bulb shape	PL-L
Net Weight (Piece)	0.085 kg

Approval and Application

Energy Efficiency Class	E
Energy-saving product	Yes
Approval marks	RoHS compliance CE marking KEMA Keur certificate

Energy consumption kWh/1,000 hours	8 kWh
EPREL Registration Number	1370819
CE mark	Yes
EU RoHS compliant	Yes
Ambient temperature range	-20°C to 45°C

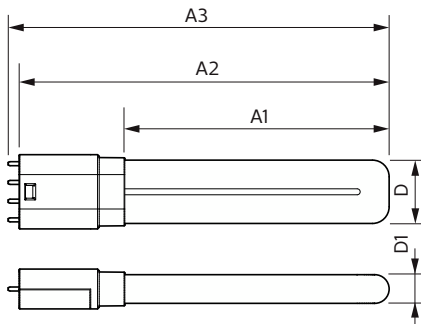
Application Conditions

Wireless Technology	Not applicable
---------------------	----------------

Product Data

Order product name	CorePro LED PLL HF 8W 830 4P 2G11
Full product name	CorePro LED PLL HF 8W 830 4P 2G11
Full EOC	871951448676800
Order code	929003578802
Material no. (12 NC)	929003578802
Numerator – quantity per pack	1
EAN/UPC – Product/Case	8719514486768
Numerator – packs per outer box	10
EAN/UPC - Case	8719514486775

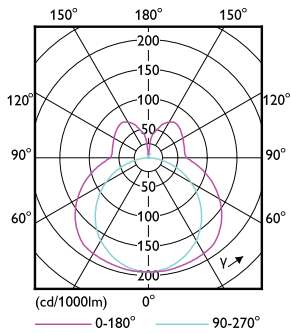
Dimensional drawing



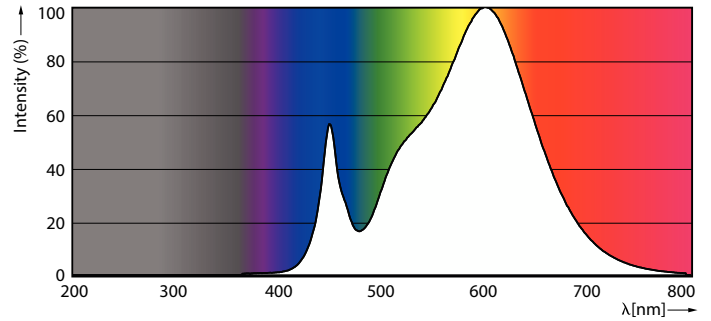
Product	D1	D2	A1	A2	A3
CorePro LED PLL HF 8W 830 4P 2G11	17 mm	38 mm	155 mm	217 mm	224 mm

CorePro LED PLL

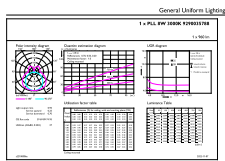
Photometric data



Light Distribution Diagram - CorePro LED PLL HF 8W 830 4P 2G11



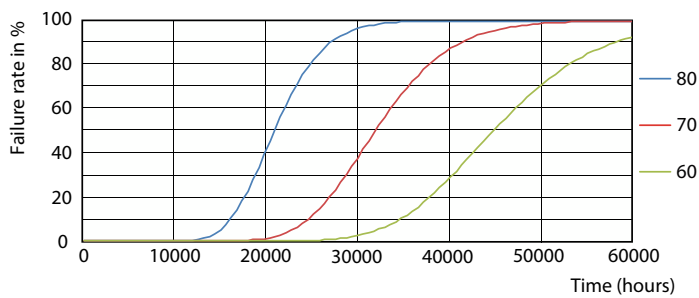
Spectral Power Distribution Colour - CorePro LED PLL HF 8W 830 4P 2G11



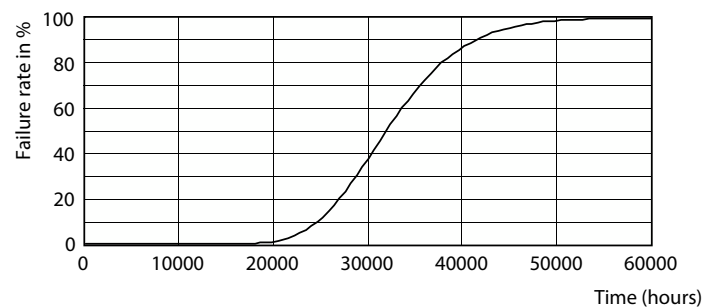
General Uniform Lighting
1 x PLL HF 8W 830 4P 2G11

General uniform lighting - CorePro LED PLL HF 8W 830 4P 2G11

Lifetime



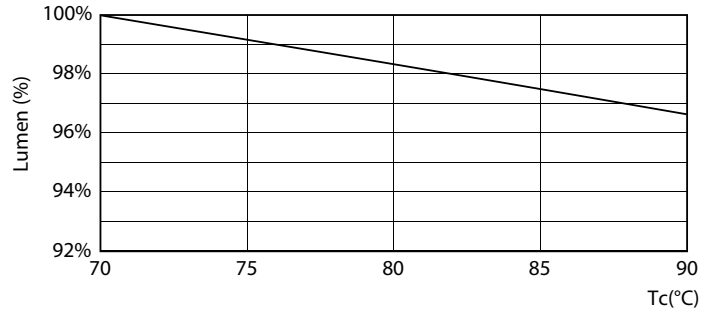
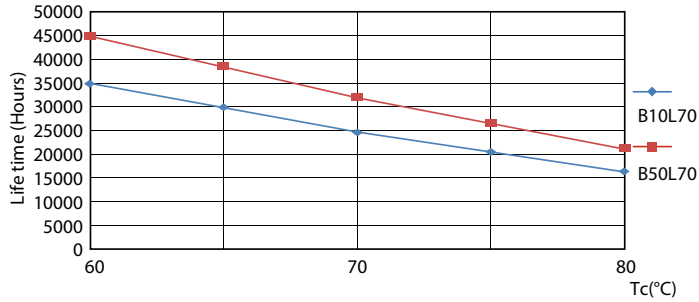
FailureRate



Life Expectancy Diagram

CorePro LED PLL

Lifetime



LifetimeVsTc

Lumen Maintenance Diagram - CorePro LED PLL HF 8W 830 4P 2G11



Lumen Maintenance Diagram - CorePro LED PLL HF 8W 830 4P 2G11

