



CorePro LED PLL



CorePro LED PLL HF 12W 840 4P 2G11

CorePro, LED, PL-L, HF, 312 mm, 12 W, 24W PL-L, 4000 K, 1500 lm, CRI 80, 30000 h

Philips CorePro LED PLL is the ideal uplamping solution for downlights & luminaires in a wide range of general lighting applications. It integrates a LED light source into a traditional fluorescent form factor to offer superb energy savings over a lifetime that's twice as long as fluorescent alternatives.

Product data

General Information	
Cap base	2G11
Nominal lifetime	30,000 h
Switching Cycle	50,000
Lighting Technology	LED
Flux measurement reference	Sphere
Warranty period	3 years
Light Technical	
Colour Code	840 [CCT of 4000K]
Beam angle (nom.)	160 degree(s)
Luminous Flux	1,500 lm
Colour designation	Cool White (CW)
Correlated Colour Temperature (Nom)	4000 K
Luminous efficacy (rated) (nom.)	125 lm/W
Colour consistency	<6
Colour rendering index (CRI)	80
LLMF at end of nominal lifetime (nom.)	70 %

Photobiological safety according to EN 62471	RG0
Operating and Electrical	
Line Frequency	20K-80K Hz
Input frequency	20 K-80 K Hz
Power Consumption	12 W
Lamp current (max.)	500 mA
Lamp current (min.)	150 mA
Starting time (nom.)	0.5 s
Warm-up time to 60% light	0.5 s
Power Factor (Fraction)	0.9
Voltage (nom.)	20-60 V
LED alternative to fluorescent lamp power	24W PL-L
Inrush current at mains	-
Max. lamp no. on MCB B type 10A – Mains	-
Max. lamp no. on MCB B type 10A – EM ballast without Compensation Capacitor.	-
Max. lamp no. on MCB B type 10A – EM ballast with Compensation Capacitor.	-

CorePro LED PLL

Max. lamp no. on MCB B type 16A — Mains	-
Max. lamp no. on MCB B type 16A – EM ballast without Compensation Capacitor.	-
Max. lamp no. on MCB B type 16A – EM ballast with Compensation Capacitor.	-
Ballast Compatibility	HF

Temperature

T-Case maximum (nom.)	70 °C
-----------------------	-------

Controls and Dimming

Dimmable	No
----------	----

Mechanical and Housing

Lamp Finish	Frosted
Bulb material	Glass
Product length	312 mm
Bulb shape	PL-L
Net Weight (Piece)	0.113 kg

Approval and Application

Energy Efficiency Class	E
Energy-saving product	Yes
Approval marks	RoHS compliance CE marking KEMA Keur certificate

Energy consumption kWh/1,000 hours	12 kWh
EPREL Registration Number	1370822
CE mark	Yes
EU RoHS compliant	Yes
Ambient temperature range	-20°C to 45°C

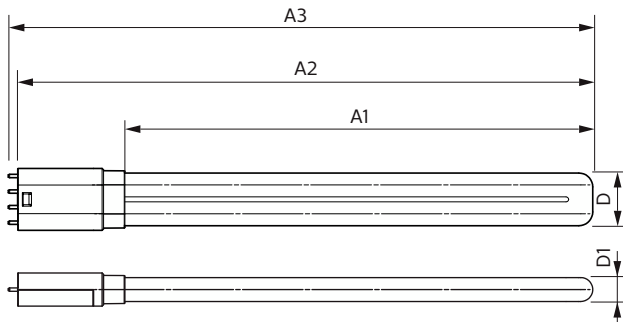
Application Conditions

Wireless Technology	Not applicable
---------------------	----------------

Product Data

Order product name	CorePro LED PLL HF 12W 840 4P 2G11
Full product name	CorePro LED PLL HF 12W 840 4P 2G11
Full EOC	871951448682900
Order code	929003579102
Material no. (12 NC)	929003579102
Numerator – quantity per pack	1
EAN/UPC – Product/Case	8719514486829
Numerator – packs per outer box	10
EAN/UPC - Case	8719514486836

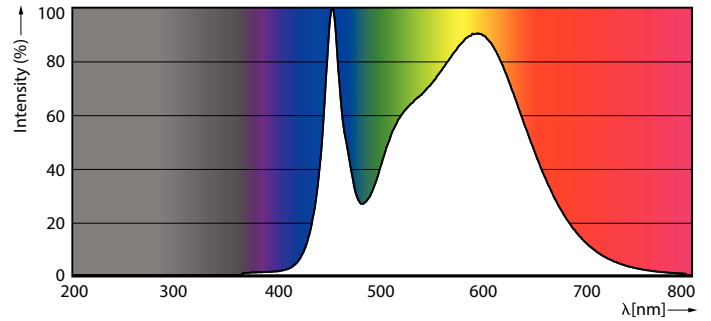
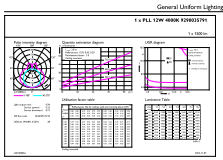
Dimensional drawing



Product	D1	D2	A1	A2	A3
CorePro LED PLL HF 12W 840 4P 2G11	17 mm	38 mm	250 mm	312 mm	319 mm

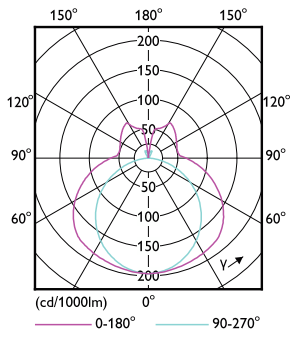
CorePro LED PLL

Photometric data



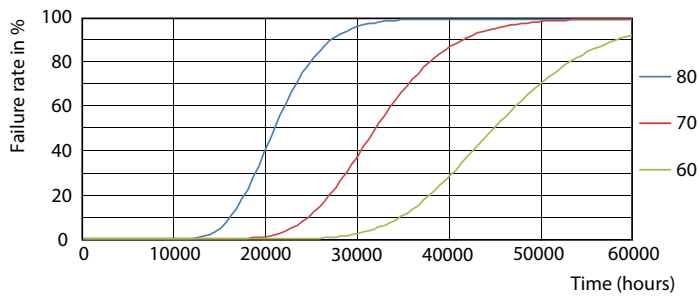
General uniform lighting - CorePro LED PLL HF 12W 840 4P 2G11

Spectral Power Distribution Colour - CorePro LED PLL HF 12W 840 4P 2G11

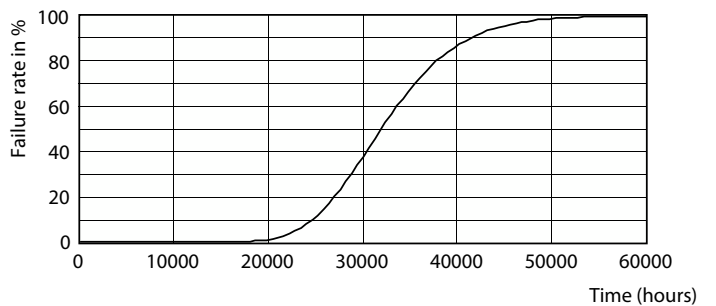


Light Distribution Diagram - CorePro LED PLL HF 12W 840 4P 2G11

Lifetime



FailureRate



Life Expectancy Diagram

CorePro LED PLL

Lifetime



LifetimeVsTc

Lumen Maintenance Diagram - CorePro LED PLL HF 12W 840 4P 2G11



Lumen Maintenance Diagram - CorePro LED PLL HF 12W 840 4P 2G11

