



CorePro LED PLL



CorePro LED PLL EM/Mains 8W 830 4P

CorePro, LED, PL-L, EM, 2G11, 8 W, 18W PL-L, 3000 K, 960 lm, CRI 80, 30000 hour(s)

Philips CorePro LED PLL is the ideal uplamping solution for downlights & luminaires in a wide range of general lighting applications. It integrates a LED light source into a traditional fluorescent form factor to offer superb energy savings over a lifetime that's twice as long as fluorescent alternatives.

Product data

General Information		Photobiological safety according to EN 62471		RGO
Cap-Base	2G11			
Nominal lifetime	30,000 hour(s)	Operating and Electrical		
Switching Cycle	200,000	Line Frequency	50 to 60 Hz	
Lighting Technology	LED	Input Frequency	50 to 60 Hz	
Flux measurement reference	Sphere	Power Consumption	8 W	
Warranty period	3 years	Lamp Current (Nom)	42 mA	
Light Technical		Starting Time (Nom)	0.5 s	
Color Code	830 [CCT of 3000K]	Warm-up time to 60% light	0.5 s	
Beam Angle (Nom)	160 degree(s)	Power Factor (Fraction)	0.9	
Luminous Flux	960 lm	Voltage (Nom)	220-240 V	
Color Designation	White (WH)	LED alternative to fluorescent lamp power	18W PL-L	
Correlated Color Temperature (Nom)	3000 K	Inrush current at mains	8	
Luminous Efficacy (rated) (Nom)	120 lm/W	Max. lamp no. on MCB B type 10A - Mains	90	
Color Consistency	<6	Max. lamp no. on MCB B type 10A – EM ballast without Compensation Capacitor.	180	
Color rendering index (CRI)	80	Max. lamp no. on MCB B type 10A – EM ballast with Compensation Capacitor.	30	
LLMF At End Of Nominal Lifetime (Nom)	70 %	Max. lamp no. on MCB B type 16A - Mains	150	

CorePro LED PLL

Max. lamp no. on MCB B type 16A – EM ballast without Compensation Capacitor.	290
--	-----

Max. lamp no. on MCB B type 16A – EM ballast with Compensation Capacitor.	49
---	----

Ballast Compatibility	EM
-----------------------	----

Temperature

T-Case Maximum (Nom)	70 °C
----------------------	-------

Controls and Dimming

Dimmable	No
----------	----

Mechanical and Housing

Bulb Finish	Frosted
Bulb Material	Glass
Product Length	218 mm
Bulb Shape	PL-L
Net Weight (Piece)	0.085 kg

Approval and Application

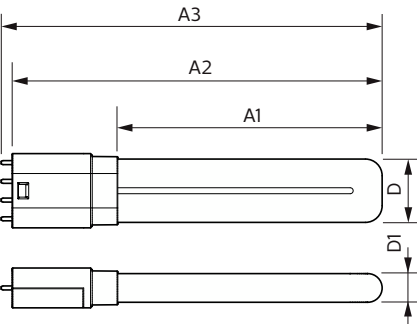
Energy Efficiency Class	E
Energy Saving Product	Yes
Approval Marks	RoHS compliance KEMA Keur certificate

Energy Consumption kWh/1000 h	8 kWh
EPREL Registration Number	1370823
CE mark	Yes
EU RoHS compliant	Yes
Flickering value (PstLM) - Flickering value as per EN 61000-3-3	1
Stroboscopic effect visibility measure (SVM)	0.4
Ambient temperature range	-20 °C to 45 °C

Product Data

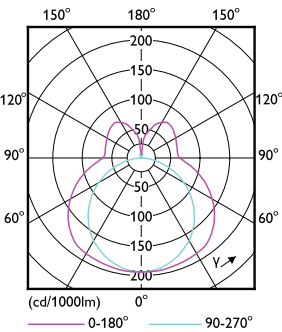
Order product name	CorePro LED PLL EM/Mains 8W 830 4P
Full product name	CorePro LED PLL EM/Mains 8W 830 4P
Full product code	872016915699900
Order code	929003592202
Material Nr. (12NC)	929003592202
Numerator - Quantity Per Pack	1
EAN/UPC - Product/Case	8720169156999
Numerator - Packs per outer box	10
EAN/UPC - Case	8720169157002

Dimensional drawing

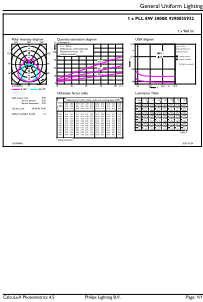


Product	D1	D2	A1	A2	A3
CorePro LED PLL EM/Mains 8W 830 4P	17 mm	38 mm	156 mm	218 mm	224 mm

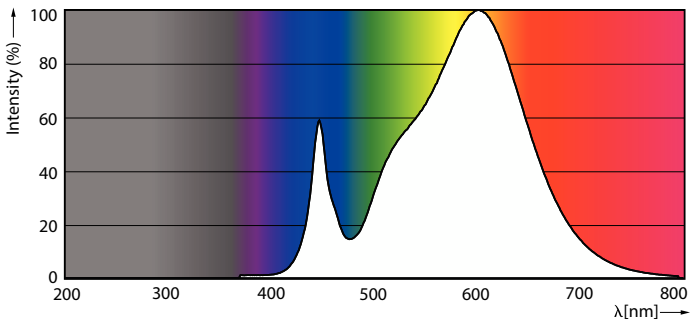
Photometric data



Light Distribution Diagram - CorePro LED PLL EM/Mains 8W 830 4P

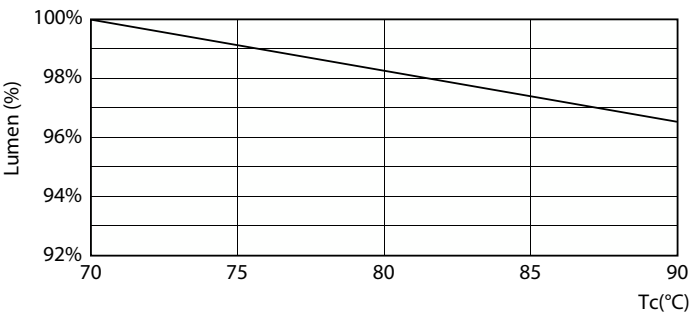


General uniform lighting - CorePro LED PLL EM/Mains 8W 830 4P

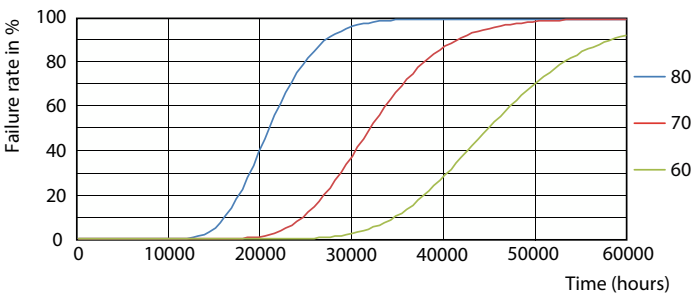


Spectral Power Distribution Colour - CorePro LED PLL EM/Mains 8W 830 4P

Lifetime

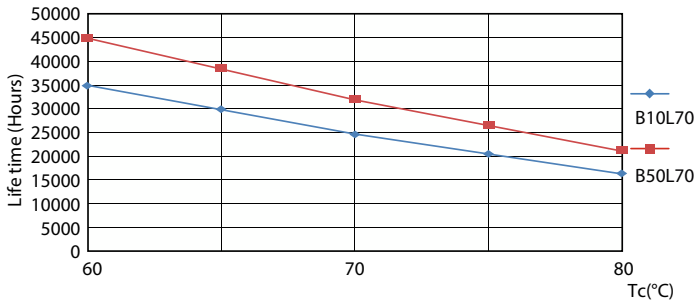
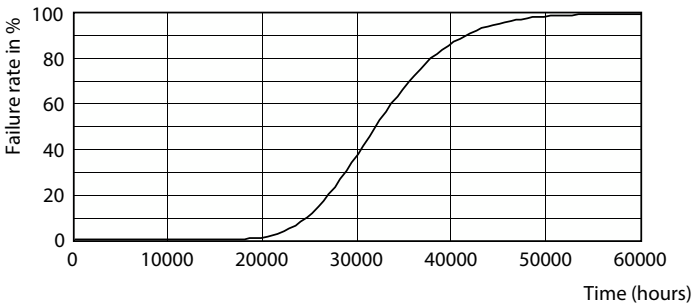


Lumen Maintenance Diagram - CorePro LED PLL EM/Mains 8W 830 4P

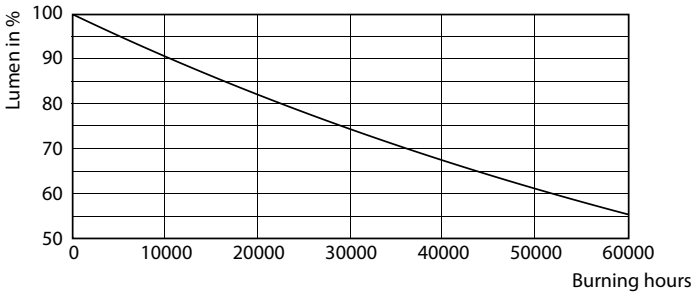


FailureRate

Lifetime



Life Expectancy Diagram



LifetimeVsTc

Lumen Maintenance Diagram - CorePro LED PLL EM/Mains 8W 830 4P

