



# CorePro LED PLL



## CorePro LED PLL EM/Mains 12W 830 4P

Philips CorePro LED PLL is the ideal uplamping solution for downlights & luminaires in a wide range of general lighting applications. It integrates a LED light source into a traditional fluorescent form factor to offer superb energy savings over a lifetime that's twice as long as fluorescent alternatives.

### Product data

General Information	
Cap-Base	2G11
Nominal lifetime	30,000 hour(s)
Switching Cycle	200,000
Lighting Technology	LED
Flux measurement reference	Sphere
Light Technical	
Color Code	830 [CCT of 3000K]
Beam Angle (Nom)	160 degree(s)
Luminous Flux	1,440 lm
Color Designation	White (WH)
Correlated Color Temperature (Nom)	3000 K
Luminous Efficacy (rated) (Nom)	120 lm/W
Color Consistency	<6
Color rendering index (CRI)	80
LLMF At End Of Nominal Lifetime (Nom)	70 %
Photobiological safety according to EN 62471	RGO
Operating and Electrical	
Line Frequency	50 to 60 Hz
Input Frequency	50 to 60 Hz
Power Consumption	12 W

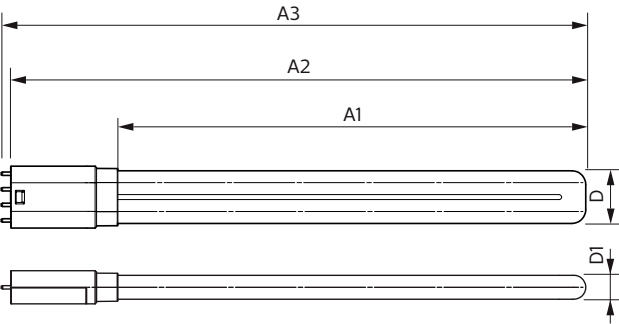
Lamp Current (Nom)	60 mA
Starting Time (Nom)	0.5 s
Warm-up time to 60% light	0.5 s
Power Factor (Fraction)	0.9
Voltage (Nom)	220-240 V
LED alternative to fluorescent lamp power	24 W
Inrush current at mains	8
Max. lamp no. on MCB B type 10A - Mains	90
Max. lamp no. on MCB B type 10A – EM ballast without Compensation Capacitor.	105
Max. lamp no. on MCB B type 10A – EM ballast with Compensation Capacitor.	15
Max. lamp no. on MCB B type 16A - Mains	150
Max. lamp no. on MCB B type 16A – EM ballast without Compensation Capacitor.	170
Max. lamp no. on MCB B type 16A – EM ballast with Compensation Capacitor.	25
Ballast Compatibility	EM
Temperature	
T-Case Maximum (Nom)	70 °C

CorePro LED PLL

Controls and Dimming	
Dimmable	No
Mechanical and Housing	
Bulb Finish	Frosted
Bulb Material	Glass
Product Length	312 mm
Bulb Shape	PL-L
Net Weight (Piece)	0.113 kg
Approval and Application	
Energy Efficiency Class	E
Energy Saving Product	Yes
Approval Marks	RoHS compliance KEMA Keur certificate
Energy Consumption kWh/1000 h	12 kWh
EPREL Registration Number	1370825
CE mark	Yes
EU RoHS compliant	Yes

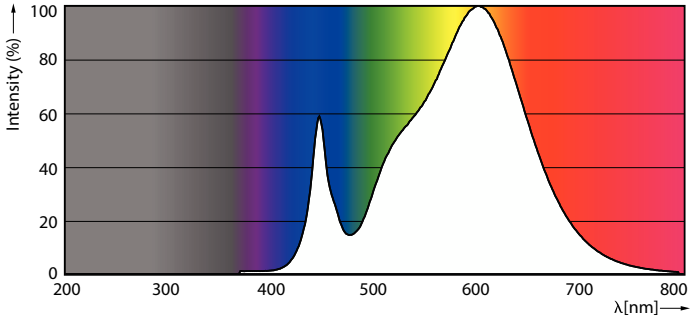
Flickering value (PstLM) - Flickering value as per EN 61000-3-3	1
Stroboscopic effect visibility measure (SVM)	0.4
Ambient temperature range	-20 °C to 45 °C
Product Data	
Order product name	CorePro LED PLL EM/Mains 12W 830 4P
Full product name	CorePro LED PLL EM/Mains 12W 830 4P
Full product code	872016915703300
Order code	929003592402
Material Nr. (12NC)	929003592402
Numerator - Quantity Per Pack	1
EAN/UPC - Product/Case	8720169157033
Numerator - Packs per outer box	10
EAN/UPC - Case	8720169157040

Dimensional drawing

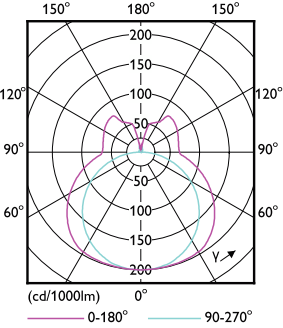


Product	D1	D2	A1	A2	A3
CorePro LED PLL EM/Mains 12W 830 4P	17 mm	38 mm	250 mm	312 mm	319 mm

Photometric data

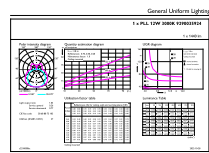


Spectral Power Distribution Colour - CorePro LED PLL EM/Mains 12W 830 4P



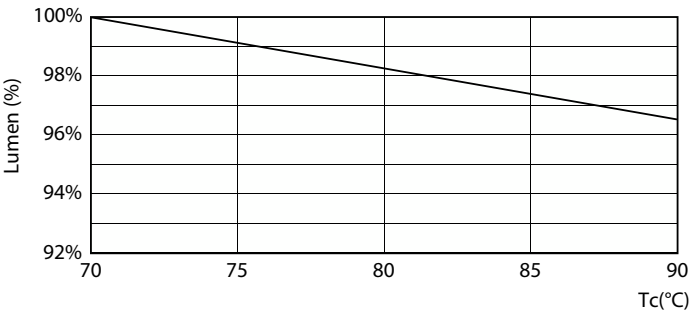
Light Distribution Diagram - CorePro LED PLL EM/Mains 12W 830 4P

Photometric data

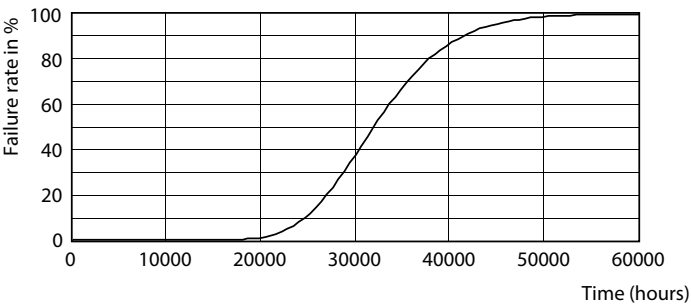


General uniform lighting - CorePro LED PLL EM/Mains 12W 830 4P

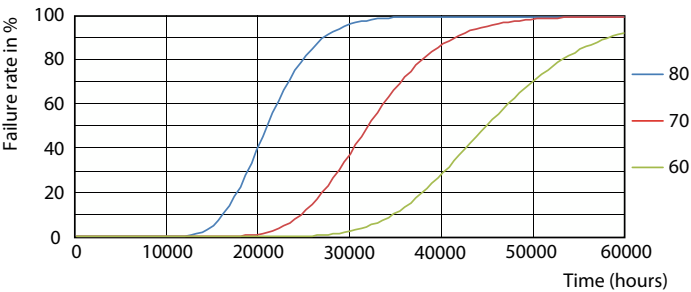
Lifetime



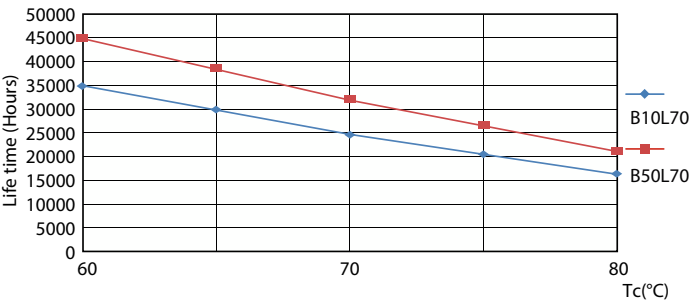
Lumen Maintenance Diagram - CorePro LED PLL EM/Mains 12W 830 4P



Life Expectancy Diagram



FailureRate



LifetimeVsTc

CorePro LED PLL

Lifetime



Lumen Maintenance Diagram - CorePro LED PLL EM/Mains 12W 830 4P

