



# CorePro LED PLL



## CorePro LED PLL EM/Mains 12W 830 4P

CorePro, LED, PL-L, EM, 312 mm, 12 W, 24W PL-L, 3000 K, 1440 lm, CRI 80, 30000 h

Philips CorePro LED PLL is the ideal uplamping solution for downlights & luminaires in a wide range of general lighting applications. It integrates a LED light source into a traditional fluorescent form factor to offer superb energy savings over a lifetime that's twice as long as fluorescent alternatives.

### Product data

General Information	
Cap base	2G11
Nominal lifetime	30,000 h
Switching Cycle	200,000
Lighting Technology	LED
Flux measurement reference	Sphere
Warranty period	3 years
Light Technical	
Colour Code	830 [CCT of 3000K]
Beam angle (nom.)	160 degree(s)
Luminous Flux	1,440 lm
Colour designation	White (WH)
Correlated Colour Temperature (Nom)	3000 K
Luminous efficacy (rated) (nom.)	120 lm/W
Colour consistency	<6
Colour rendering index (CRI)	80
LLMF at end of nominal lifetime (nom.)	70 %

Photobiological safety according to EN 62471	RG0
Operating and Electrical	
Line Frequency	50 to 60 Hz
Input frequency	50 to 60 Hz
Power Consumption	12 W
Lamp current (nom.)	60 mA
Starting time (nom.)	0.5 s
Warm-up time to 60% light	0.5 s
Power Factor (Fraction)	0.9
Voltage (nom.)	220-240 V
LED alternative to fluorescent lamp power	24W PL-L
Inrush current at mains	8
Max. lamp no. on MCB B type 10A — Mains	90
Max. lamp no. on MCB B type 10A – EM ballast without Compensation Capacitor.	105
Max. lamp no. on MCB B type 10A – EM ballast with Compensation Capacitor.	15
Max. lamp no. on MCB B type 16A — Mains	150

# CorePro LED PLL

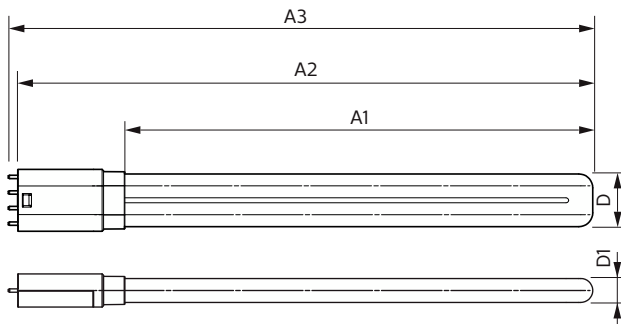
Max. lamp no. on MCB B type 16A – EM ballast without Compensation Capacitor.	170
Max. lamp no. on MCB B type 16A – EM ballast with Compensation Capacitor.	25
Ballast Compatibility	EM
<b>Temperature</b>	
T-Case maximum (nom.)	70 °C
<b>Controls and Dimming</b>	
Dimmable	No
<b>Mechanical and Housing</b>	
Lamp Finish	Frosted
Bulb material	Glass
Product length	312 mm
Bulb shape	PL-L
Net Weight (Piece)	0.113 kg
<b>Approval and Application</b>	
Energy Efficiency Class	E
Energy-saving product	Yes
Approval marks	RoHS compliance KEMA Keur certificate

Energy consumption kWh/1,000 hours	12 kWh
EPREL Registration Number	1370825
CE mark	Yes
EU RoHS compliant	Yes
Flickering value (PstLM)	1
Stroboscopic effect	0.4
Ambient temperature range	-20°C to 45°C

## Product Data

Order product name	CorePro LED PLL EM/Mains 12W 830 4P
Full product name	CorePro LED PLL EM/Mains 12W 830 4P
Full EOC	872016915703300
Order code	929003592402
Material no. (12 NC)	929003592402
Numerator – quantity per pack	1
EAN/UPC – Product/Case	8720169157033
Numerator – packs per outer box	10
EAN/UPC - Case	8720169157040

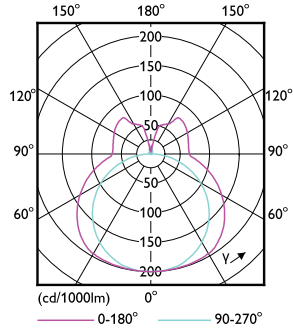
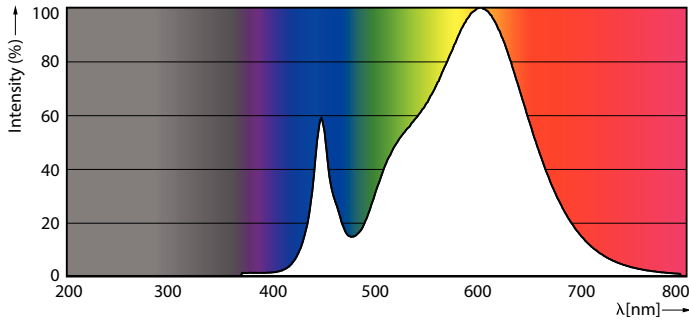
## Dimensional drawing



Product	D1	D2	A1	A2	A3
CorePro LED PLL EM/Mains 12W 830 4P	17 mm	38 mm	250 mm	312 mm	319 mm

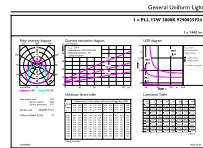
# CorePro LED PLL

## Photometric data



Spectral Power Distribution Colour - CorePro LED PLL EM/Mains 12W 830 4P

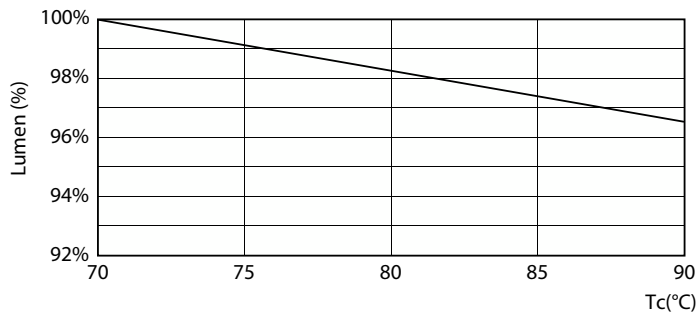
Light Distribution Diagram - CorePro LED PLL EM/Mains 12W 830 4P



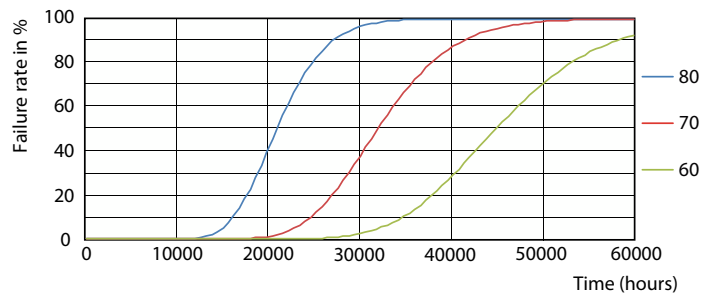
General Uniform Lighting  
12W PLL LOW BEAM DIMMABLE  
Page 10

General uniform lighting - CorePro LED PLL EM/Mains 12W 830 4P

## Lifetime



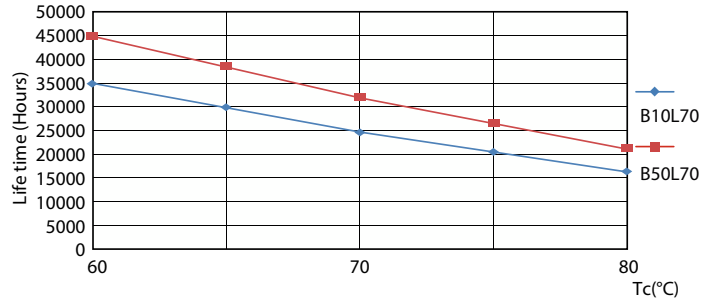
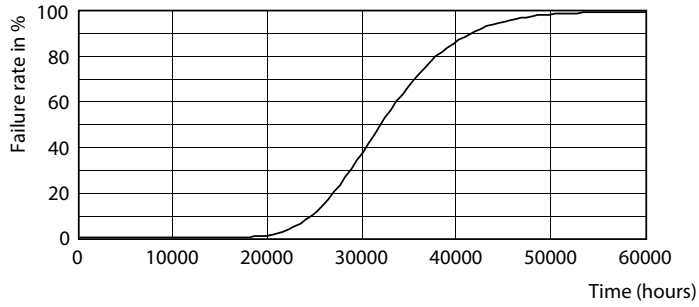
Lumen Maintenance Diagram - CorePro LED PLL EM/Mains 12W 830 4P



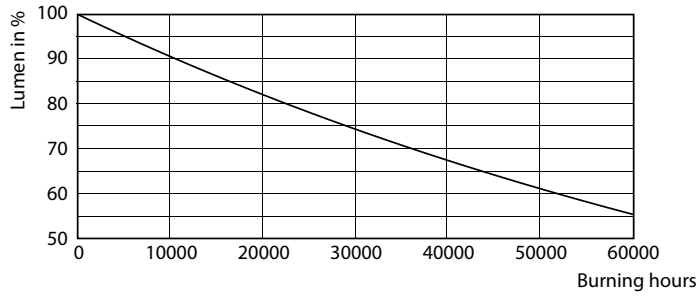
FailureRate

# CorePro LED PLL

## Lifetime



Life Expectancy Diagram



LifetimeVsTc

Lumen Maintenance Diagram - CorePro LED PLL EM/Mains 12W 830 4P

