



CorePro LED PLL



CorePro LED PLL EM/Mains 16.5W 830 4P

Philips CorePro LED PLL is the ideal uplamping solution for downlights & luminaires in a wide range of general lighting applications. It integrates a LED light source into a traditional fluorescent form factor to offer superb energy savings over a lifetime that's twice as long as fluorescent alternatives.

Product data

General Information		Lamp Current (Nom)	
Cap-Base	2G11	83 mA	
Nominal lifetime	30,000 hour(s)	Starting Time (Nom)	
Switching Cycle	200,000	0.5 s	
Lighting Technology	LED	Warm-up time to 60% light	
Flux measurement reference	Sphere	0.5 s	
Light Technical		Power Factor (Fraction)	
Color Code	830 [CCT of 3000K]	0.9	
Beam Angle (Nom)	160 degree(s)	Voltage (Nom)	
Luminous Flux	2,000 lm	220-240 V	
Color Designation	White (WH)	LED alternative to fluorescent lamp power	
Correlated Color Temperature (Nom)	3000 K	36 W	
Luminous Efficacy (rated) (Nom)	121 lm/W	Inrush current at mains	
Color Consistency	<6	9.4	
Color rendering index (CRI)	80	Max. lamp no. on MCB B type 10A - Mains	
LLMF At End Of Nominal Lifetime (Nom)	70 %	82	
Photobiological safety according to EN 62471	RG0	Max. lamp no. on MCB B type 10A – EM ballast	
Operating and Electrical		104	
Line Frequency	50 to 60 Hz	without Compensation Capacitor.	
Input Frequency	50 to 60 Hz	Max. lamp no. on MCB B type 10A – EM ballast	
Power Consumption	16.5 W	19	
		with Compensation Capacitor.	
		Max. lamp no. on MCB B type 16A - Mains	
		131	
		Max. lamp no. on MCB B type 16A – EM ballast	
		166	
		without Compensation Capacitor.	
		Max. lamp no. on MCB B type 16A – EM ballast	
		30	
		with Compensation Capacitor.	
		Ballast Compatibility	
		EM	
		Temperature	
		T-Case Maximum (Nom)	
		70 °C	

CorePro LED PLL

Controls and Dimming	
Dimmable	No
Mechanical and Housing	
Bulb Finish	Frosted
Bulb Material	Glass
Product Length	405 mm
Bulb Shape	PL-L
Net Weight (Piece)	0.150 kg
Approval and Application	
Energy Efficiency Class	E
Energy Saving Product	Yes
Approval Marks	RoHS compliance KEMA Keur certificate
Energy Consumption kWh/1000 h	17 kWh
EPREL Registration Number	1370827
CE mark	Yes
EU RoHS compliant	Yes

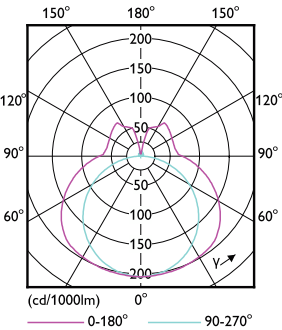
Flickering value (PstLM) - Flickering value as per EN 61000-3-3	1
Stroboscopic effect visibility measure (SVM)	0.4
Ambient temperature range	-20 °C to 45 °C
Product Data	
Order product name	CorePro LED PLL EM/Mains 16.5W 830 4P
Full product name	CorePro LED PLL EM/Mains 16.5W 830 4P
Full product code	872016915707100
Order code	929003592602
Material Nr. (12NC)	929003592602
Numerator - Quantity Per Pack	1
EAN/UPC - Product/Case	8720169157071
Numerator - Packs per outer box	10
EAN/UPC - Case	8720169157088

Dimensional drawing

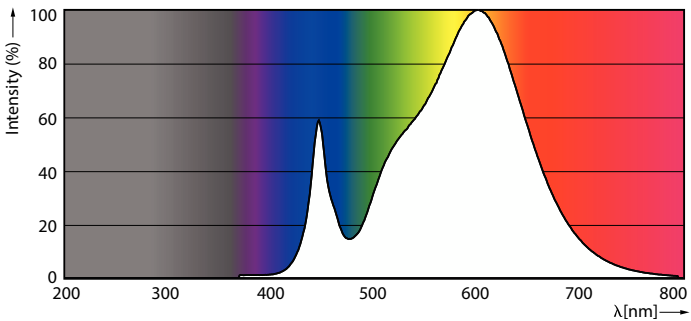


Product	D1	D2	A1	A2	A3
CorePro LED PLL EM/Mains 16.5W 830 4P	17 mm	38 mm	330 mm	405 mm	412 mm

Photometric data



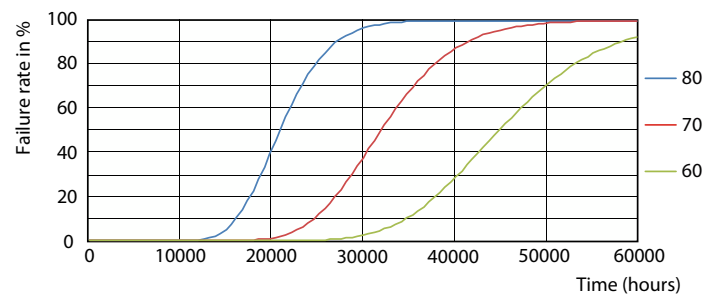
Light Distribution Diagram - CorePro LED PLL EM/Mains 16.5W 830 4P



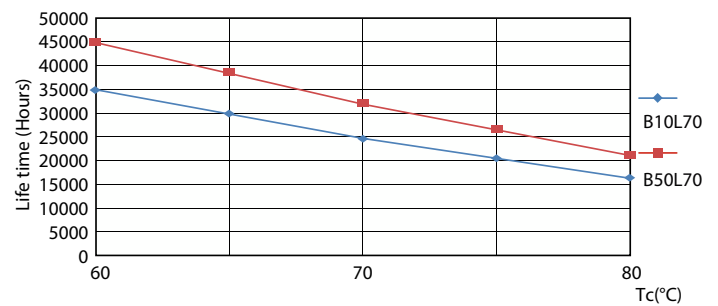
Spectral Power Distribution Colour - CorePro LED PLL EM/Mains 16.5W 830 4P



Lifetime



FailureRate



LifetimeVsTc

CorePro LED PLL

Lifetime



Lumen Maintenance Diagram - CorePro LED PLL EM/Mains 16.5W 830 4P

