



# CorePro LED PLL



## CorePro LED PLL Mains 24W 830 4P

Philips CorePro LED PLL is the ideal uplamping solution for downlights & luminaires in a wide range of general lighting applications. It integrates a LED light source into a traditional fluorescent form factor to offer superb energy savings over a lifetime that's twice as long as fluorescent alternatives.

### Product data

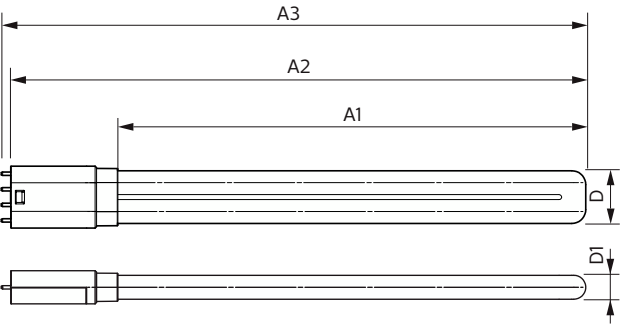
General Information		Lamp Current (Nom)	
Cap-Base	2G11	127 mA	
Nominal lifetime	30,000 hour(s)	Starting Time (Nom)	
Switching Cycle	200,000	0.5 s	
Lighting Technology	LED	Warm-up time to 60% light	
Flux measurement reference	Sphere	0.5 s	
Light Technical		Power Factor (Fraction)	
Color Code	830 [CCT of 3000K]	0.9	
Beam Angle (Nom)	160 degree(s)	Voltage (Nom)	
Luminous Flux	3,200 lm	220-240 V	
Color Designation	White (WH)	LED alternative to fluorescent lamp power	
Correlated Color Temperature (Nom)	3000 K	55 W	
Luminous Efficacy (rated) (Nom)	133 lm/W	Inrush current at mains	
Color Consistency	<6	9.6	
Color rendering index (CRI)	80	Max. lamp no. on MCB B type 10A - Mains	
LLMF At End Of Nominal Lifetime (Nom)	70 %	80	
Photobiological safety according to EN 62471	RG0	Max. lamp no. on MCB B type 10A – EM ballast	
Operating and Electrical		without Compensation Capacitor.	
Line Frequency	50 to 60 Hz	Max. lamp no. on MCB B type 10A – EM ballast	
Input Frequency	50 to 60 Hz	16	
Power Consumption	24 W	with Compensation Capacitor.	
Temperature		Max. lamp no. on MCB B type 16A - Mains	
		128	
		Max. lamp no. on MCB B type 16A – EM ballast	
		128	
		without Compensation Capacitor.	
		Max. lamp no. on MCB B type 16A – EM ballast with 25	
		Compensation Capacitor.	
		Ballast Compatibility	
		Mains	

CorePro LED PLL

Controls and Dimming	
Dimmable	No
Mechanical and Housing	
Bulb Finish	Frosted
Bulb Material	Glass
Product Length	528 mm
Bulb Shape	PL-L
Net Weight (Piece)	0.192 kg
Approval and Application	
Energy Efficiency Class	E
Energy Saving Product	Yes
Approval Marks	RoHS compliance KEMA Keur certificate
Energy Consumption kWh/1000 h	24 kWh
EPREL Registration Number	1370829
CE mark	Yes
EU RoHS compliant	Yes

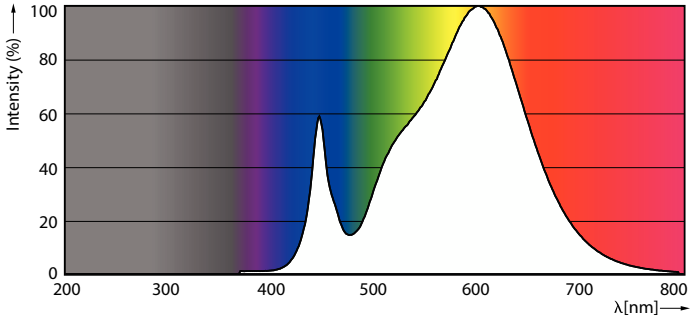
Flickering value (PstLM) - Flickering value as per EN 61000-3-3	1
Stroboscopic effect visibility measure (SVM)	0.4
Ambient temperature range	-20 °C to 45 °C
Product Data	
Order product name	CorePro LED PLL Mains 24W 830 4P
Full product name	CorePro LED PLL Mains 24W 830 4P
Full product code	872016915711800
Order code	929003592802
Material Nr. (12NC)	929003592802
Numerator - Quantity Per Pack	1
EAN/UPC - Product/Case	8720169157118
Numerator - Packs per outer box	10
EAN/UPC - Case	8720169157125

Dimensional drawing

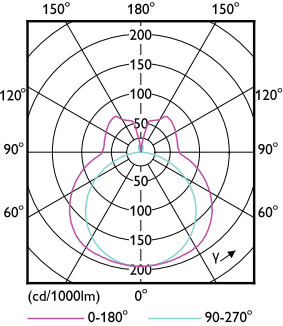


Product	D1	D2	A1	A2	A3
CorePro LED PLL Mains 24W 830 4P	17 mm	38 mm	453 mm	528 mm	535 mm

Photometric data



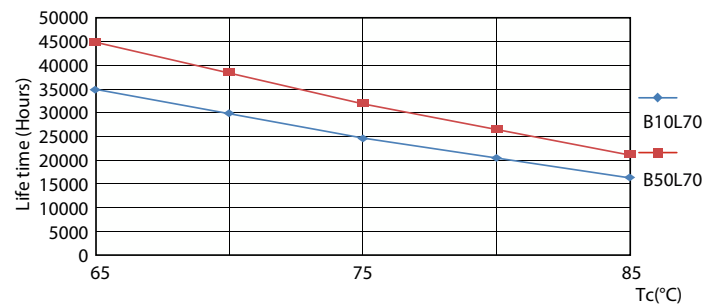
Spectral Power Distribution Colour - CorePro LED PLL Mains 24W 830 4P



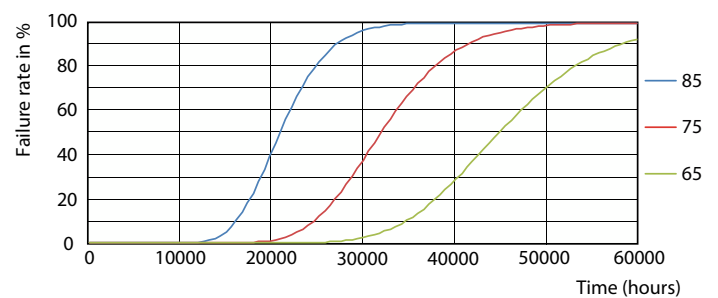
Light Distribution Diagram - CorePro LED PLL Mains 24W 830 4P



**Lifetime**



LifetimeVsTc



FailureRate

CorePro LED PLL

Lifetime



Lumen Maintenance Diagram - CorePro LED PLL Mains 24W 830 4P

