



CorePro LED PLL



CorePro LED PLL Mains 24W 840 4P

Philips CorePro LED PLL is the ideal uplamping solution for downlights & luminaires in a wide range of general lighting applications. It integrates a LED light source into a traditional fluorescent form factor to offer superb energy savings over a lifetime that's twice as long as fluorescent alternatives.

Product data

General Information	
Cap-Base	2G11
Nominal lifetime	30,000 hour(s)
Switching Cycle	200,000
Lighting Technology	LED
Flux measurement reference	Sphere
Light Technical	
Color Code	840 [CCT of 4000K]
Beam Angle (Nom)	160 degree(s)
Luminous Flux	3,400 lm
Color Designation	Cool White (CW)
Correlated Color Temperature (Nom)	4000 K
Luminous Efficacy (rated) (Nom)	141 lm/W
Color Consistency	<6
Color rendering index (CRI)	80
LLMF At End Of Nominal Lifetime (Nom)	70 %
Photobiological safety according to EN 62471	RG0
Operating and Electrical	
Line Frequency	50 to 60 Hz
Input Frequency	50 to 60 Hz
Power Consumption	24 W

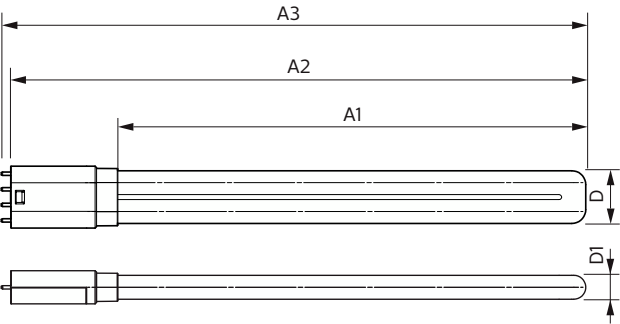
Lamp Current (Nom)	127 mA
Starting Time (Nom)	0.5 s
Warm-up time to 60% light	0.5 s
Power Factor (Fraction)	0.9
Voltage (Nom)	220-240 V
LED alternative to fluorescent lamp power	55 W
Inrush current at mains	9.6
Max. lamp no. on MCB B type 10A - Mains	80
Max. lamp no. on MCB B type 10A – EM ballast without Compensation Capacitor.	80
Max. lamp no. on MCB B type 10A – EM ballast with Compensation Capacitor.	16
Max. lamp no. on MCB B type 16A - Mains	128
Max. lamp no. on MCB B type 16A – EM ballast without Compensation Capacitor.	128
Max. lamp no. on MCB B type 16A – EM ballast with Compensation Capacitor.	25
Ballast Compatibility	Mains
Temperature	
T-Case Maximum (Nom)	75 °C

CorePro LED PLL

Controls and Dimming	
Dimmable	No
Mechanical and Housing	
Bulb Finish	Frosted
Bulb Material	Glass
Product Length	528 mm
Bulb Shape	PL-L
Net Weight (Piece)	0.192 kg
Approval and Application	
Energy Efficiency Class	D
Energy Saving Product	Yes
Approval Marks	RoHS compliance KEMA Keur certificate
Energy Consumption kWh/1000 h	24 kWh
EPREL Registration Number	1370830
CE mark	Yes
EU RoHS compliant	Yes

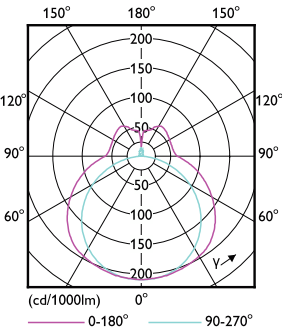
Flickering value (PstLM) - Flickering value as per EN 61000-3-3	1
Stroboscopic effect visibility measure (SVM)	0.4
Ambient temperature range	-20 °C to 45 °C
Product Data	
Order product name	CorePro LED PLL Mains 24W 840 4P
Full product name	4P
Full product code	CorePro LED PLL Mains 24W 840 4P
Order code	872016915713200
Material Nr. (12NC)	929003592902
Numerator - Quantity Per Pack	1
EAN/UPC - Product/Case	8720169157132
Numerator - Packs per outer box	10
EAN/UPC - Case	8720169157149

Dimensional drawing

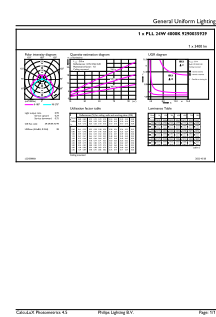


Product	D1	D2	A1	A2	A3
CorePro LED PLL Mains 24W 840 4P	17 mm	38 mm	453 mm	528 mm	535 mm

Photometric data

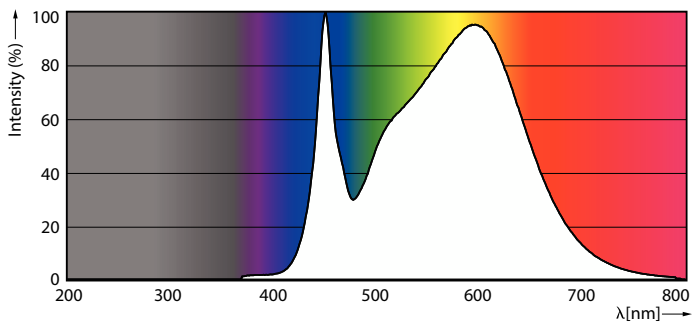


Light Distribution Diagram - CorePro LED PLL Mains 24W 840 4P



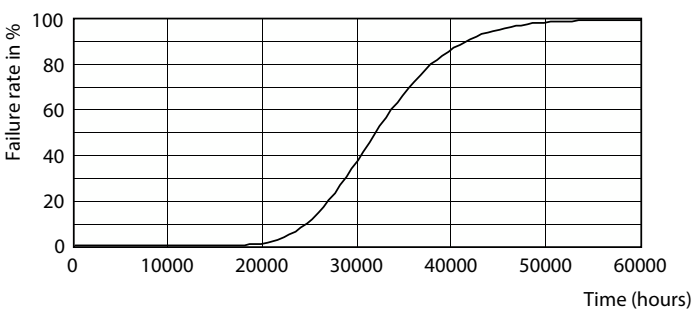
General uniform lighting - CorePro LED PLL Mains 24W 840 4P

Photometric data

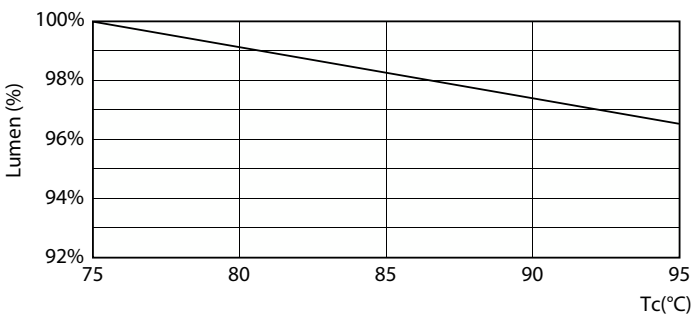


Spectral Power Distribution Colour - CorePro LED PLL Mains 24W 840 4P

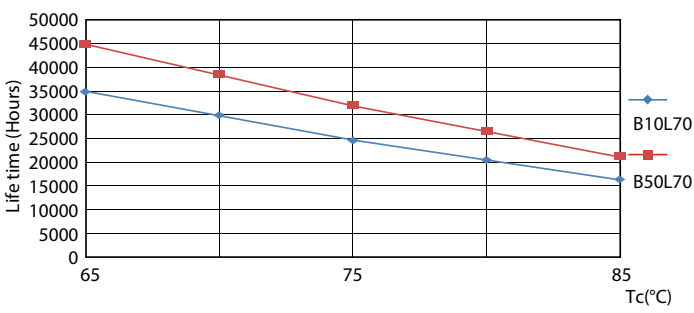
Lifetime



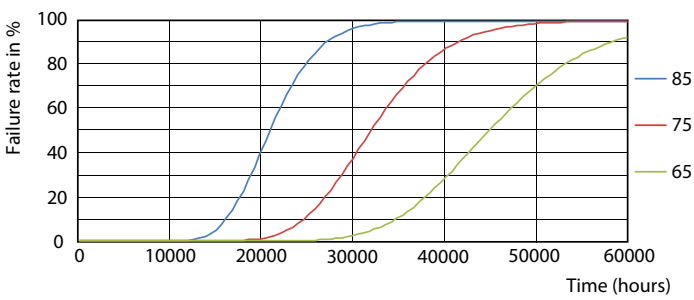
Life Expectancy Diagram



Lumen Maintenance Diagram - CorePro LED PLL Mains 24W 840 4P



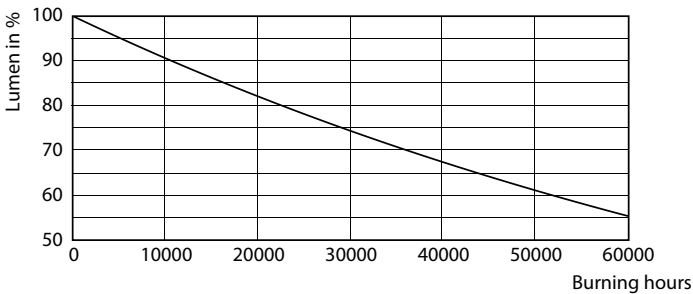
LifetimeVsTc



FailureRate

CorePro LED PLL

Lifetime



Lumen Maintenance Diagram - CorePro LED PLL Mains 24W 840 4P

