



MyCare LED Circular

LED MOD 10W 865 APR

MyCare LED Ceiling Module integrates a LED light source into a module. It is specially designed to replace fluorescent circular tubes working on a G10q fitting. The module offers significant energy savings and a long lifetime.

Product data

| General Information | |
|------------------------|----------------|
| Cap-Base | - [-] |
| Nominal lifetime | 20,000 hour(s) |
| Switching Cycle | 15,000 |
| Rated Lifetime (Hours) | 20,000 hour(s) |
| Lighting Technology | LED |
| EU RoHS compliant | Yes |

| Light Technical | |
|---------------------------------------|--------------------|
| Color Code | 865 [CCT of 6500K] |
| Color Code | 865 [CCT of 6500K] |
| Beam Angle (Nom) | 120 degree(s) |
| Luminous Flux | 1,100 lm |
| Color Designation | Cool Daylight |
| Correlated Color Temperature (Nom) | 6500 K |
| Luminous Efficacy (rated) (Nom) | 110 lm/W |
| Color Consistency | <6 |
| Color rendering index (CRI) | 80 |
| LLMF At End Of Nominal Lifetime (Nom) | 70 % |

| Operating and Electrical | |
|--------------------------|-------------|
| Line Frequency | 50 to 60 Hz |
| Input Frequency | 50 to 60 Hz |
| Power Consumption | 10 W |

| | |
|---------------------------|----------------------|
| Lamp Current (Max) | 85 mA |
| Lamp Current (Min) | 85 mA |
| Starting Time (Nom) | 0.5 s |
| Warm-up time to 60% light | instant full light s |
| Power Factor (Fraction) | 0.5 |
| Voltage (Nom) | 220-240 V |

| Temperature | |
|---------------------------|-----------------|
| Ambient temperature range | -20 °C to 45 °C |
| T-Case Maximum (Nom) | 75 °C |

| Controls and Dimming | |
|----------------------|----|
| Dimmable | No |

| Mechanical and Housing | |
|------------------------|---------|
| Bulb Finish | Frosted |
| Bulb Material | Plastic |
| Product Length | 100 mm |
| Bulb Shape | Others |

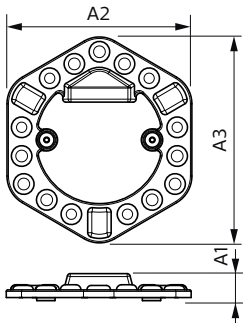
| Approval and Application | |
|-------------------------------|-----------------|
| Energy Saving Product | Yes |
| Approval Marks | RoHS compliance |
| Energy Consumption kWh/1000 h | - kWh |

MyCare LED Circular

| | |
|---------------------|---------------------|
| EyeComfort | Yes |
| Product Data | |
| Order product name | LED MOD 10W 865 APR |
| Full product name | LED MOD 10W 865 APR |
| Full product code | 872016919631500 |
| Order code | 929003620507 |

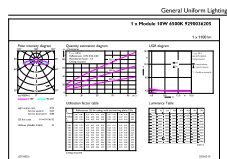
| | |
|---------------------------------|---------------|
| Material Nr. (12NC) | 929003620507 |
| Numerator - Quantity Per Pack | 1 |
| EAN/UPC - Product/Case | 8720169196315 |
| Numerator - Packs per outer box | 20 |
| EAN/UPC - Case | 8720169196322 |

Dimensional drawing

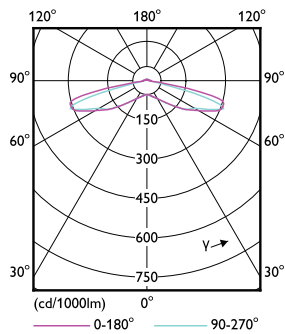


| Product | A1 | A2 | A3 |
|---------------------|-------|--------|--------|
| LED MOD 10W 865 APR | 18 mm | 126 mm | 139 mm |

Photometric data

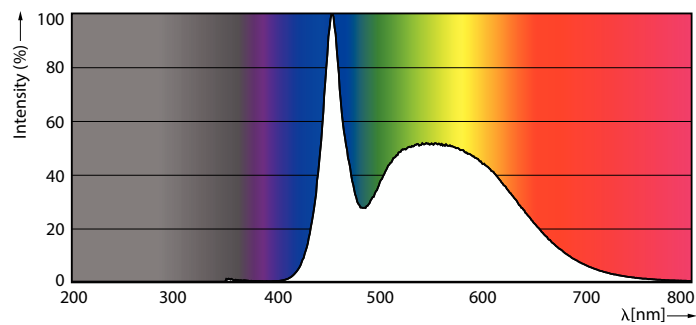


General Uniform Lighting - LED MOD 10W 865 APR



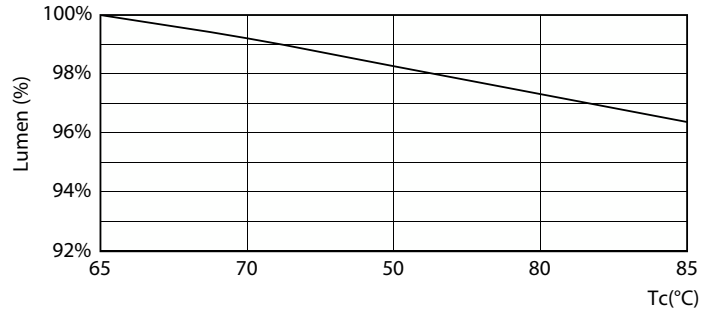
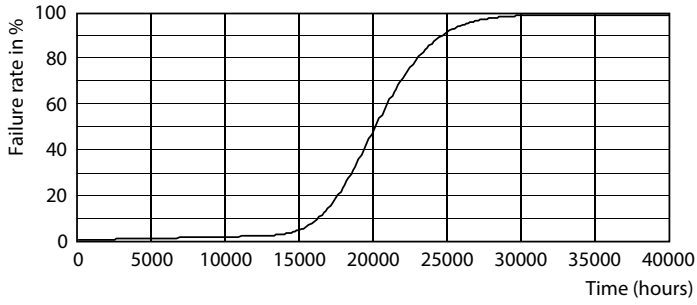
Light Distribution Diagram - LED MOD 10W 865 APR

General uniform lighting - LED MOD 10W 865 APR



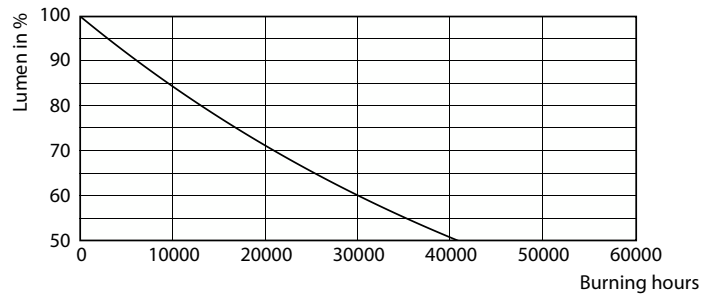
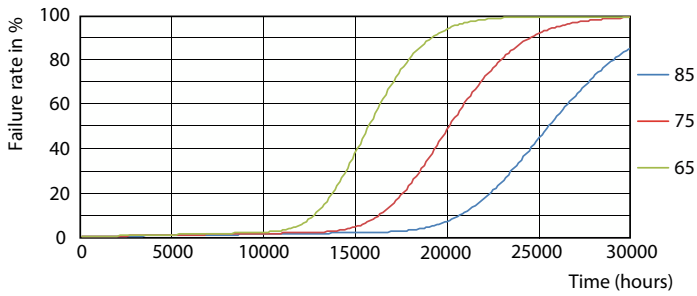
Spectral Power Distribution Colour - LED MOD 10W 865 APR

Lifetime



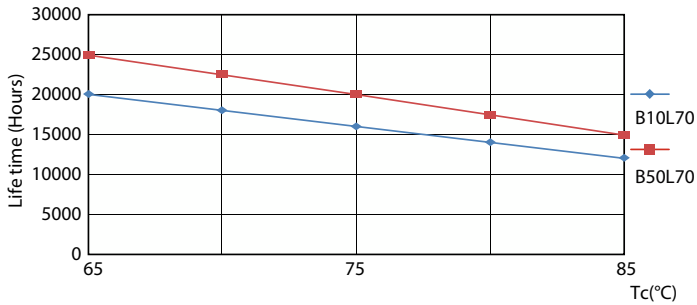
Life Expectancy Diagram - LED MOD 10W 865 APR

Lumen Maintenance Diagram - LED MOD 10W 865 APR



Life Expectancy Diagram - LED MOD 10W 865 APR

Lumen Maintenance Diagram - LED MOD 10W 865 APR



Life Expectancy Diagram - LED MOD 10W 865 APR

