



# CorePro LED PLC 4P



## CorePro LED PLC 5.5W 830 4P G24q-1

CorePro, LED, PL-C, HF/Mains, 128 mm, 5.5 W, 13W PL-C, 3000 K, 600 lm, CRI 82, 30000 h

The CorePro LED PLC 4P integrates a LED light source into a traditional fluorescent form factor. This product is the ideal solution for uplampping in general lighting applications: it meets basic lighting requirements, offers significant energy savings and is environmentally friendly.

### Product data

| General Information                    |                          |
|--|--------------------------|
| Cap base                               | G24Q-1 Rotatable end-cap |
| Nominal lifetime                       | 30,000 h                 |
| Switching Cycle                        | 200,000                  |
| Lighting Technology                    | LED                      |
| Flux measurement reference             | Sphere                   |
| Warranty period                        | 3 years                  |
| Light Technical                        |                          |
| Colour Code                            | 830 [CCT of 3000K]       |
| Beam angle (nom.)                      | 120 degree(s)            |
| Luminous Flux                          | 600 lm                   |
| Colour designation                     | White (WH)               |
| Correlated Colour Temperature (Nom)    | 3000 K                   |
| Luminous efficacy (rated) (nom.)       | 109 lm/W                 |
| Colour consistency                     | <6                       |
| Colour rendering index (CRI)           | 82                       |
| LLMF at end of nominal lifetime (nom.) | 70 %                     |

| Operating and Electrical   |             |
|--|-------------|
| Input frequency  | 50 to 60 Hz |
| Power Consumption  | 5.5 W       |
| Lamp current (nom.)  | 30 mA       |
| Starting time (nom.)   | 0.5 s       |
| Warm-up time to 60% light  | 0.5 s       |
| Power Factor (Fraction)  | 0.9         |
| Voltage (nom.)   | 220-240 V   |
| LED alternative to fluorescent lamp power                                    | 13W PL-C    |
| Inrush current at mains  | 6           |
| Max. lamp no. on MCB B type 10A – Mains                                      | 266         |
| Max. lamp no. on MCB B type 10A – EM ballast without Compensation Capacitor. | -           |
| Max. lamp no. on MCB B type 10A – EM ballast with Compensation Capacitor.    | -           |
| Max. lamp no. on MCB B type 16A – Mains                                      | 420         |
| Max. lamp no. on MCB B type 16A – EM ballast without Compensation Capacitor. | -           |

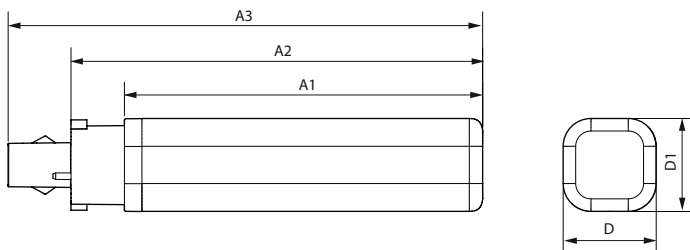
# CorePro LED PLC 4P

|   |  |
|---|--|
| Max. lamp no. on MCB B type 16A – EM ballast with Compensation Capacitor. | -  |
| Ballast Compatibility   | HF/Mains   |
| <b>Temperature</b>  |  |
| T-Case maximum (nom.)   | 70 °C  |
| <b>Controls and Dimming</b>   |  |
| Dimmable  | No   |
| <b>Mechanical and Housing</b>   |  |
| Lamp Finish   | Frosted  |
| Bulb material   | Plastic  |
| Product length  | 128 mm   |
| Bulb shape  | PL-C   |
| Net Weight (Piece)  | 0.100 kg   |
| <b>Approval and Application</b>   |  |
| Energy Efficiency Class   | F  |
| Energy-saving product   | Yes  |
| Approval marks  | RoHS compliance CE marking KEMA Keur certificate |
| Energy consumption kWh/1,000 hours  | 6 kWh  |
| EPREL Registration Number   | 1945441  |

|                                     |                |
|-------------------------------------|----------------|
| CE mark                             | Yes            |
| EU RoHS compliant                   | Yes            |
| Flickering value (PstLM)            | 1              |
| Stroboscopic effect                 | 0.4            |
| Ambient temperature range           | -20 to +45 °C  |
| <b>Application Conditions</b>       |                |
| Can it be used in closed luminaires | Yes            |
| Wireless Technology                 | Not applicable |

|                                 |                                    |
|---------------------------------|------------------------------------|
| <b>Product Data</b>             |                                    |
| Order product name              | CorePro LED PLC 5.5W 830 4P G24q-1 |
| Full product name               | CorePro LED PLC 5.5W 830 4P G24q-1 |
| Full EOC                        | 872016929041900                    |
| Order code                      | 929003757602                       |
| Material no. (12 NC)            | 929003757602                       |
| Numerator – quantity per pack   | 1                                  |
| EAN/UPC – Product/Case          | 8720169290419                      |
| Numerator – packs per outer box | 10                                 |
| EAN/UPC - Case                  | 8720169290426                      |

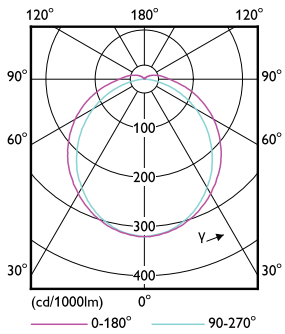
## Dimensional drawing



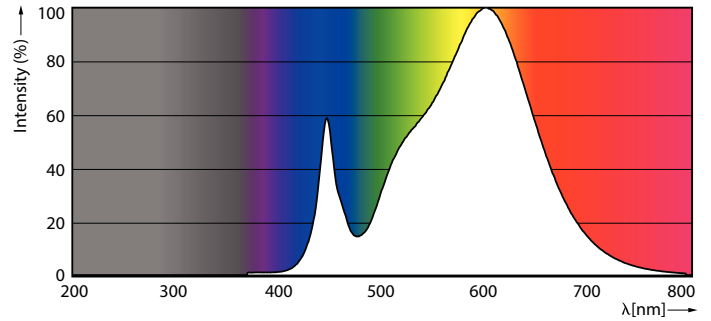
| Product                            | D1    | D2    | A1     | A2     | A3     |
|------------------------------------|-------|-------|--------|--------|--------|
| CorePro LED PLC 5.5W 830 4P G24q-1 | 34 mm | 34 mm | 109 mm | 128 mm | 144 mm |

# CorePro LED PLC 4P

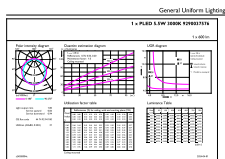
## Photometric data



Light Distribution Diagram - CorePro LED PLC 5.5W 830 4P G24q-1

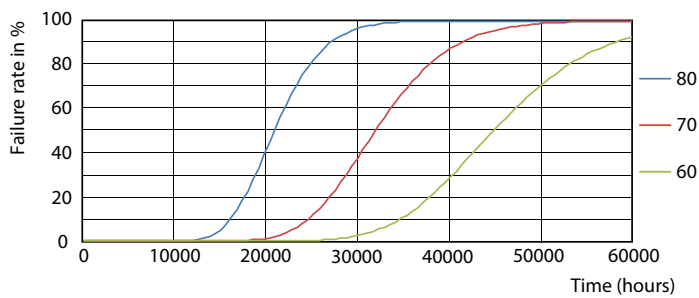


Spectral Power Distribution Colour - CorePro LED PLC 5.5W 830 4P G24q-1

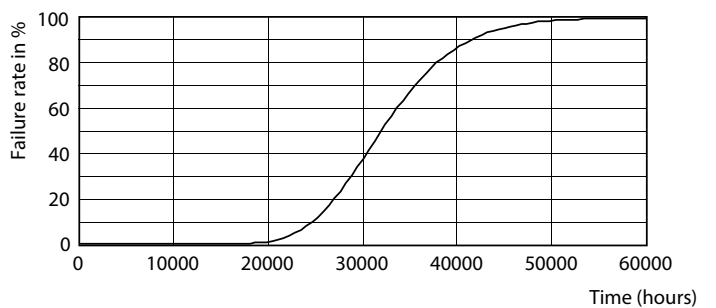


General uniform lighting - CorePro LED PLC 5.5W 830 4P G24q-1

## Lifetime



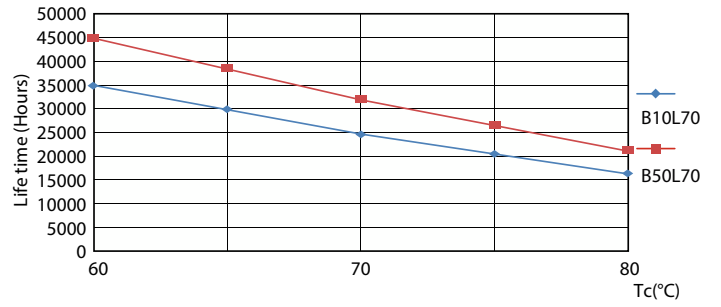
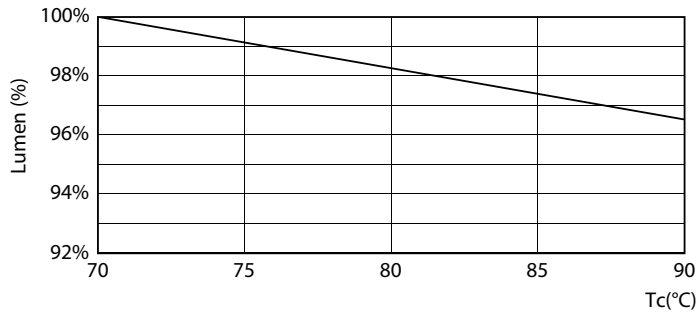
FailureRate



Life Expectancy Diagram

# CorePro LED PLC 4P

## Lifetime



Lumen Maintenance Diagram - CorePro LED PLC 5.5W 830 4P G24q-1

LifetimeVsTc



Lumen Maintenance Diagram - CorePro LED PLC 5.5W 830 4P G24q-1

