



# CorePro LED PLC 4P



## CorePro LED PLC 5.5W 840 4P G24q-1

CorePro, LED, PL-C, HF/Mains, 128 mm, 5.5 W, 13W PL-C, 4000 K, 660 lm, CRI 82, 30000 h

The CorePro LED PLC 4P integrates a LED light source into a traditional fluorescent form factor. This product is the ideal solution for uplampping in general lighting applications: it meets basic lighting requirements, offers significant energy savings and is environmentally friendly.

### Product data

General Information	
Cap base	G24Q-1 Rotatable end-cap
Nominal lifetime	30,000 h
Switching Cycle	200,000
Lighting Technology	LED
Flux measurement reference	Sphere
Warranty period	3 years
Light Technical	
Colour Code	840 [CCT of 4000K]
Beam angle (nom.)	120 degree(s)
Luminous Flux	660 lm
Colour designation	Cool White (CW)
Correlated Colour Temperature (Nom)	4000 K
Luminous efficacy (rated) (nom.)	120 lm/W
Colour consistency	<6
Colour rendering index (CRI)	82
LLMF at end of nominal lifetime (nom.)	70 %

Operating and Electrical	
Input frequency	50 to 60 Hz
Power Consumption	5.5 W
Lamp current (nom.)	30 mA
Starting time (nom.)	0.5 s
Warm-up time to 60% light	0.5 s
Power Factor (Fraction)	0.9
Voltage (nom.)	220-240 V
LED alternative to fluorescent lamp power	13W PL-C
Inrush current at mains	6
Max. lamp no. on MCB B type 10A — Mains	266
Max. lamp no. on MCB B type 10A – EM ballast without Compensation Capacitor.	-
Max. lamp no. on MCB B type 10A – EM ballast with Compensation Capacitor.	-
Max. lamp no. on MCB B type 16A — Mains	420
Max. lamp no. on MCB B type 16A – EM ballast without Compensation Capacitor.	-

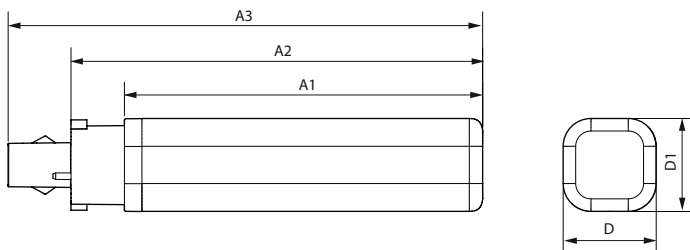
# CorePro LED PLC 4P

Max. lamp no. on MCB B type 16A – EM ballast with Compensation Capacitor.	-
Ballast Compatibility	HF/Mains
<b>Temperature</b>	
T-Case maximum (nom.)	70 °C
<b>Controls and Dimming</b>	
Dimmable	No
<b>Mechanical and Housing</b>	
Lamp Finish	Frosted
Bulb material	Plastic
Product length	128 mm
Bulb shape	PL-C
Net Weight (Piece)	0.100 kg
<b>Approval and Application</b>	
Energy Efficiency Class	E
Energy-saving product	Yes
Approval marks	RoHS compliance CE marking KEMA Keur certificate
Energy consumption kWh/1,000 hours	6 kWh
EPREL Registration Number	1945439

CE mark	Yes
EU RoHS compliant	Yes
Flickering value (PstLM)	1
Stroboscopic effect	0.4
Ambient temperature range	-20 to +45 °C
<b>Application Conditions</b>	
Can it be used in closed luminaires	Yes
Wireless Technology	Not applicable

<b>Product Data</b>	
Order product name	CorePro LED PLC 5.5W 840 4P G24q-1
Full product name	CorePro LED PLC 5.5W 840 4P G24q-1
Full EOC	872016929043300
Order code	929003757702
Material no. (12 NC)	929003757702
Numerator – quantity per pack	1
EAN/UPC – Product/Case	8720169290433
Numerator – packs per outer box	10
EAN/UPC - Case	8720169290440

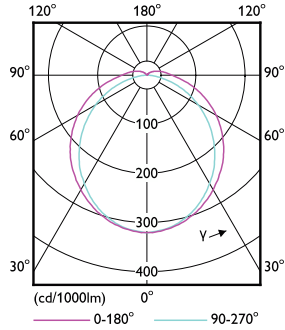
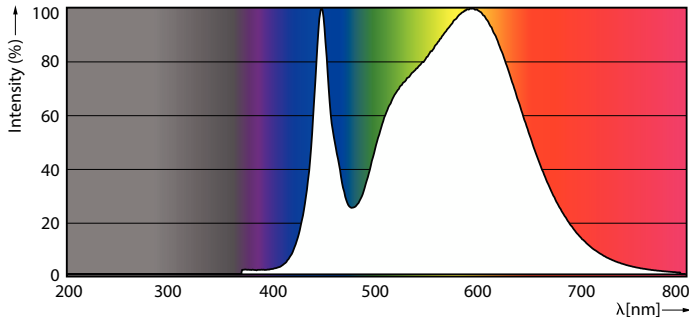
## Dimensional drawing



Product	D1	D2	A1	A2	A3
CorePro LED PLC 5.5W 840 4P G24q-1	34 mm	34 mm	109 mm	128 mm	144 mm

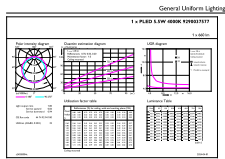
# CorePro LED PLC 4P

## Photometric data



Spectral Power Distribution Colour - CorePro LED PLC 5.5W 840 4P G24q-1

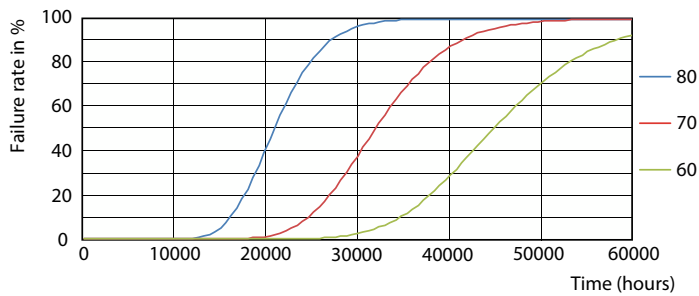
Light Distribution Diagram - CorePro LED PLC 5.5W 840 4P G24q-1



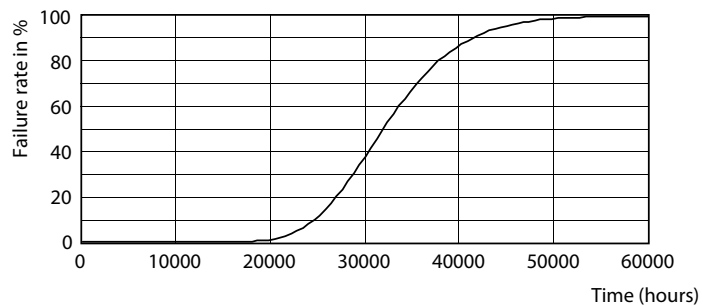
Standard Powerline 11 PLED Lighting BV Page 11

General uniform lighting - CorePro LED PLC 5.5W 840 4P G24q-1

## Lifetime



FailureRate



Life Expectancy Diagram

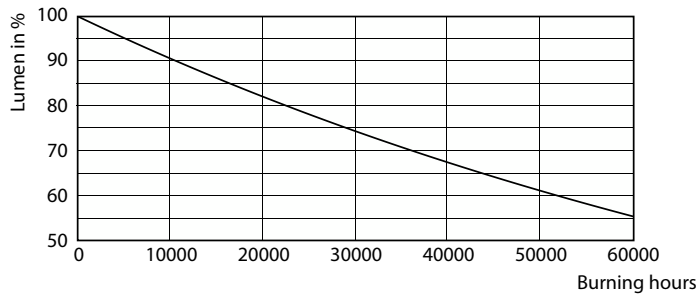
# CorePro LED PLC 4P

## Lifetime



Lumen Maintenance Diagram - CorePro LED PLC 5.5W 840 4P G24q-1

LifetimeVsTc



Lumen Maintenance Diagram - CorePro LED PLC 5.5W 840 4P G24q-1

