



CorePro LEDtube InstantFit HF T5



CorePro LEDtube HF 1200mm HO 26.7W 865T5

CorePro, LED, T5, HF, 1200 mm, 26.7 W, 54W TL5 HO, 6500 K, 3900 lm, CRI 80, 50000 h

CorePro LEDtube InstantFit HF T5 is the quick and easy way to replace T5 fluorescent tubes with a fast payback time. Designed with industry leading ballast compatibility, the product is ideal for your everyday lighting jobs. With simply plug-and-play installation, it improves energy efficiency immediately and lasts for longer than conventional T5.

Product data

General Information		Colour rendering index (CRI)	
Cap base	G5		80
Nominal lifetime	50,000 h	LLMF at end of nominal lifetime (nom.)	70 %
Switching Cycle	50,000	Photobiological safety according to EN 62471	RG0
Lighting Technology	LED	Operating and Electrical	
Flux measurement reference	Sphere	Input frequency	30 K to 60 K Hz
Warranty period	3 years	Power Consumption	26.7 W
Light Technical		Lamp current (max.)	620 mA
Colour Code	865 [CCT of 6500K]	Lamp current (min.)	300 mA
Beam angle (nom.)	200 degree(s)	Starting time (nom.)	0.5 s
Luminous Flux	3,900 lm	Warm-up time to 60% light	0.5 s
Colour designation	Cool Daylight	Power Factor (Fraction)	0.9
Correlated Colour Temperature (Nom)	6500 K	Voltage (nom.)	20-90 V
Luminous efficacy (rated) (nom.)	146 lm/W	LED alternative to fluorescent lamp power	54W TL5 HO
Colour consistency	<6	Inrush current at mains	-
		Max. lamp no. on MCB B type 10A — Mains	-

CorePro LEDtube InstantFit HF T5

Max. lamp no. on MCB B type 10A – EM ballast without Compensation Capacitor.	-
Max. lamp no. on MCB B type 10A – EM ballast with Compensation Capacitor.	-
Max. lamp no. on MCB B type 16A – Mains	-
Max. lamp no. on MCB B type 16A – EM ballast without Compensation Capacitor.	-
Max. lamp no. on MCB B type 16A – EM ballast with Compensation Capacitor.	-
Ballast Compatibility	HF

Temperature

T-Case maximum (nom.)	45 °C
-----------------------	-------

Controls and Dimming

Dimmable	No
----------	----

Mechanical and Housing

Lamp Finish	Frosted
Bulb material	Glass
Product length	1,200 mm
Bulb shape	T5
Net Weight (Piece)	0.160 kg

Approval and Application

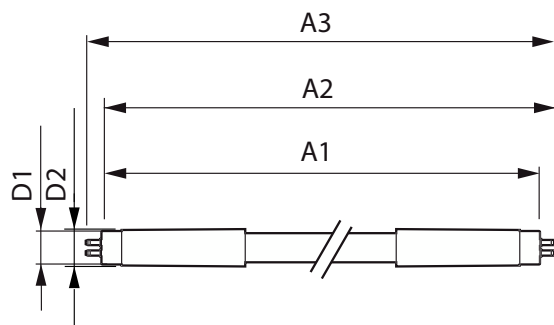
Energy Efficiency Class	D
-------------------------	---

Energy-saving product	Yes
Approval marks	RoHS compliance KEMA Keur certificate
Energy consumption kWh/1,000 hours	27 kWh
EPREL Registration Number	1857690
CE mark	Yes
EU RoHS compliant	Yes
Ambient temperature range	-20 to +45 °C

Product Data

Order product name	CorePro LEDtube HF 1200mm HO 26.7W 865T5
Full product name	CorePro LEDtube HF 1200mm HO 26.7W 865T5
Full EOC	872016929562900
Order code	929003775202
Material no. (12 NC)	929003775202
Numerator – quantity per pack	1
EAN/UPC – Product/Case	8720169295629
Numerator – packs per outer box	10
EAN/UPC - Case	8720169295636

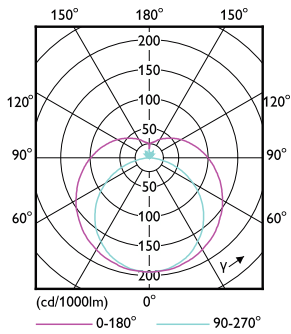
Dimensional drawing



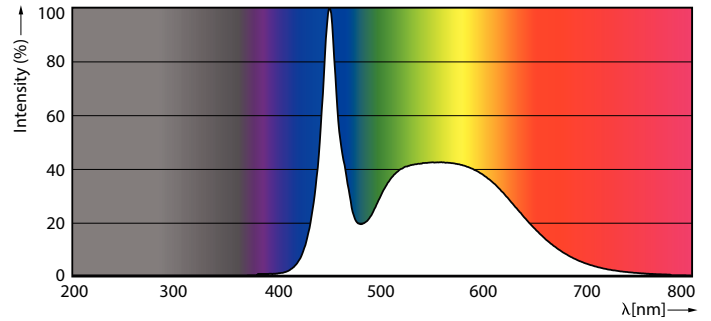
Product	D1	D2	A1	A2	A3
CorePro LEDtube HF 1200mm HO 26.7W 865T5	15.5 mm	16/19 mm	1,149 mm	1,156 mm	1,163 mm

CorePro LEDtube InstantFit HF T5

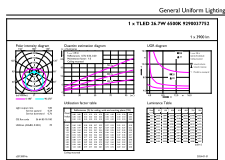
Photometric data



Light Distribution Diagram - CorePro LEDtube HF 1200mm HO 26.7W 865T5



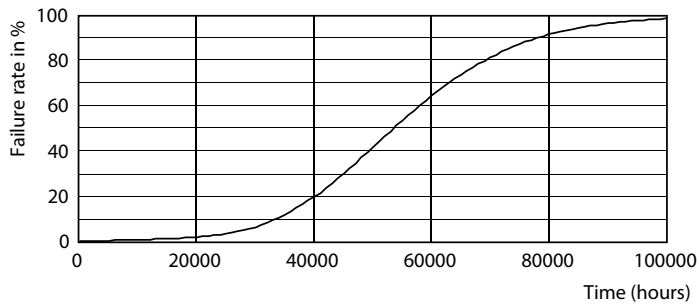
Spectral Power Distribution Colour - CorePro LEDtube HF 1200mm HO 26.7W 865T5



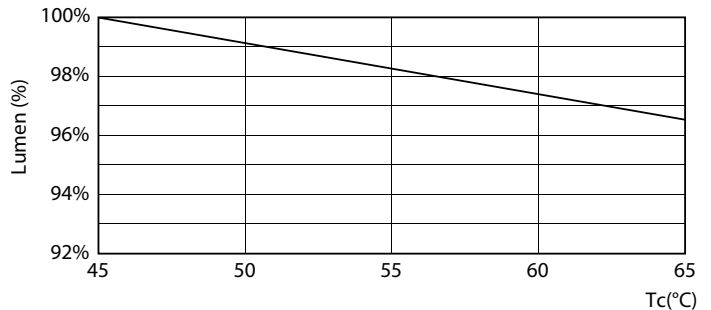
General Uniform Lighting
 1 - 1200mm HO 26.7W 865T5
 © 2024 Philips Lighting B.V. All rights reserved.

General uniform lighting - CorePro LEDtube HF 1200mm HO 26.7W 865T5

Lifetime



Life Expectancy Diagram



Lumen Maintenance Diagram - CorePro LEDtube HF 1200mm HO 26.7W 865T5

CorePro LEDtube InstantFit HF T5

Lifetime



FailureRate

LifetimeVsTc



Lumen Maintenance Diagram - CorePro LEDtube HF 1200mm HO 26.7W 865T5

