



CorePro LEDtube InstantFit HF T5



CorePro LEDtube HF 1500mm HO 26.7W 865T5

CorePro, LEDtube, T5, HF, 1500 mm, 26.7 W, 49W TL5 HO, 6500 K, 3900 lm, CRI 80, 50000 h

CorePro LEDtube InstantFit HF T5 is the quick and easy way to replace T5 fluorescent tubes with a fast payback time. Designed with industry leading ballast compatibility, the product is ideal for your everyday lighting jobs. With simply plug-and-play installation, it improves energy efficiency immediately and lasts for longer than conventional T5.

Product data

| General Information | | Colour rendering index (CRI) | |
|-------------------------------------|--------------------|--|------------------|
| Cap base | G5 | | 80 |
| Nominal lifetime | 50,000 h | LLMF at end of nominal lifetime (nom.) | 70 % |
| Switching Cycle | 50,000 | Photobiological safety according to EN 62471 | RG0 |
| Lighting Technology | LEDtube | Operating and Electrical | |
| Flux measurement reference | Sphere | Input frequency | 20 K to 140 K Hz |
| Warranty period | 3 years | Power Consumption | 26.7 W |
| Light Technical | | Lamp current (max.) | 420 mA |
| Colour Code | 865 [CCT of 6500K] | Lamp current (min.) | 150 mA |
| Beam angle (nom.) | 200 degree(s) | Starting time (nom.) | 0.5 s |
| Luminous Flux | 3,900 lm | Warm-up time to 60% light | 0.5 s |
| Colour designation | Cool Daylight | Power Factor (Fraction) | 0.9 |
| Correlated Colour Temperature (Nom) | 6500 K | Voltage (nom.) | 60-120 V |
| Luminous efficacy (rated) (nom.) | 146 lm/W | LED alternative to fluorescent lamp power | 49W TL5 HO |
| Colour consistency | <6 | Inrush current at mains | - |
| | | Max. lamp no. on MCB B type 10A — Mains | - |

CorePro LEDtube InstantFit HF T5

| | |
|--|----|
| Max. lamp no. on MCB B type 10A – EM ballast without Compensation Capacitor. | - |
| Max. lamp no. on MCB B type 10A – EM ballast with Compensation Capacitor. | - |
| Max. lamp no. on MCB B type 16A – Mains | - |
| Max. lamp no. on MCB B type 16A – EM ballast without Compensation Capacitor. | - |
| Max. lamp no. on MCB B type 16A – EM ballast with Compensation Capacitor. | - |
| Ballast Compatibility | HF |

Temperature

| | |
|-----------------------|-------|
| T-Case maximum (nom.) | 45 °C |
|-----------------------|-------|

Controls and Dimming

| | |
|----------|----|
| Dimmable | No |
|----------|----|

Mechanical and Housing

| | |
|--------------------|----------|
| Lamp Finish | Frosted |
| Bulb material | Glass |
| Product length | 1,500 mm |
| Bulb shape | T5 |
| Net Weight (Piece) | 0.196 kg |

Approval and Application

| | |
|-------------------------|---|
| Energy Efficiency Class | D |
|-------------------------|---|

| | |
|------------------------------------|---------------------------------------|
| Energy-saving product | Yes |
| Approval marks | RoHS compliance KEMA Keur certificate |
| Energy consumption kWh/1,000 hours | 27 kWh |
| EPREL Registration Number | 1857689 |
| CE mark | Yes |
| EU RoHS compliant | Yes |
| Ambient temperature range | -20 to +45 °C |

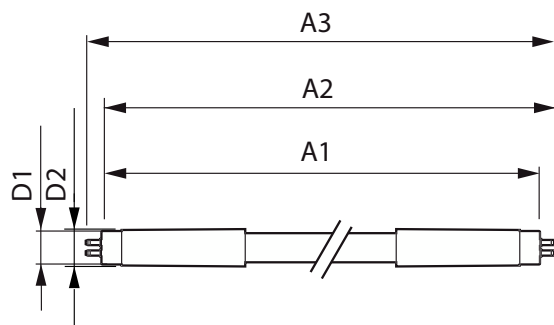
Application Conditions

| | |
|---------------------|----------------|
| Wireless Technology | Not applicable |
|---------------------|----------------|

Product Data

| | |
|---------------------------------|--|
| Order product name | CorePro LEDtube HF 1500mm HO 26.7W 865T5 |
| Full product name | CorePro LEDtube HF 1500mm HO 26.7W 865T5 |
| Full EOC | 872016929568100 |
| Order code | 929003775502 |
| Material no. (12 NC) | 929003775502 |
| Numerator – quantity per pack | 1 |
| EAN/UPC – Product/Case | 8720169295681 |
| Numerator – packs per outer box | 10 |
| EAN/UPC – Case | 8720169295698 |

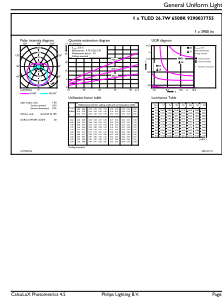
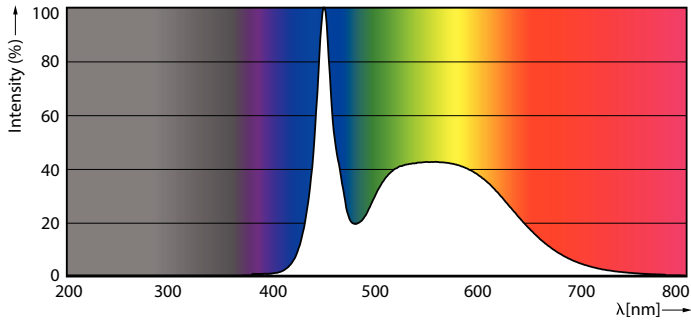
Dimensional drawing



| Product | D1 | D2 | A1 | A2 | A3 |
|--|---------|----------|----------|----------|----------|
| CorePro LEDtube HF 1500mm HO 26.7W 865T5 | 15.5 mm | 16/19 mm | 1,449 mm | 1,456 mm | 1,463 mm |

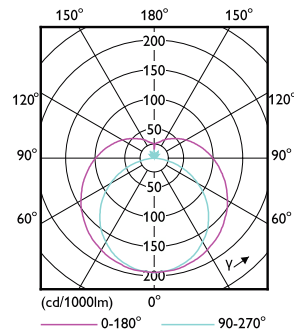
CorePro LEDtube InstantFit HF T5

Photometric data



Spectral Power Distribution Colour - CorePro LEDtube HF 1500mm HO 26.7W 865T5

General uniform lighting - CorePro LEDtube HF 1500mm HO 26.7W 865T5

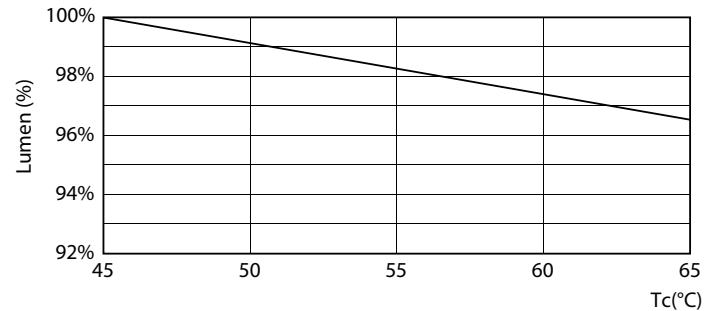


Light Distribution Diagram - CorePro LEDtube HF 1500mm HO 26.7W 865T5

Lifetime



Life Expectancy Diagram



Lumen Maintenance Diagram - CorePro LEDtube HF 1500mm HO 26.7W 865T5

CorePro LEDtube InstantFit HF T5

Lifetime



FailureRate

LifetimeVsTc



Lumen Maintenance Diagram - CorePro LEDtube HF 1500mm HO 26.7W 865T5

