



MASTER LEDtube InstantFit HF T5



MAS LEDtube HF 600mm HE 7W 830 T5

The Philips MASTER LEDtube integrates a LED light source into a traditional fluorescent form factor. Its unique design creates a perfectly uniform visual appearance, which cannot be distinguished from traditional fluorescent. These T5 lighting tubes are the right choice for absolute performance and are designed to stand up to everyday conditions. Unparalleled savings thanks to low energy consumption and an exceptionally long lifetime make these T5 LED tubes the choice for every demanding application.

Product data

General Information	
Cap-Base	G5
Nominal lifetime	60,000 hour(s)
Switching Cycle	50,000
Lighting Technology	LED
Flux measurement reference	Sphere
Light Technical	
Color Code	830 [CCT of 3000K]
Beam Angle (Nom)	200 degree(s)
Luminous Flux	1,000 lm
Color Designation	White (WH)
Correlated Color Temperature (Nom)	3000 K
Luminous Efficacy (rated) (Nom)	142 lm/W
Color Consistency	<6
Color rendering index (CRI)	80
LLMF At End Of Nominal Lifetime (Nom)	70 %

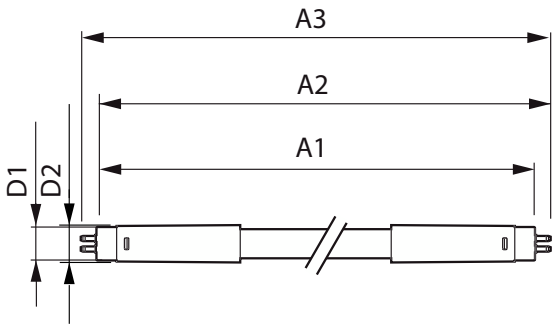
Photobiological safety according to EN 62471	RG0
Operating and Electrical	
Input Frequency	30K to 100K Hz
Power Consumption	7 W
Lamp Current (Max)	350 mA
Lamp Current (Min)	150 mA
Starting Time (Nom)	0.5 s
Warm-up time to 60% light	0.5 s
Power Factor (Fraction)	0.92
Voltage (Nom)	40-70 V
LED alternative to fluorescent lamp power	14 W
Inrush current at mains	-
Max. lamp no. on MCB B type 10A - Mains	-
Max. lamp no. on MCB B type 10A – EM ballast without Compensation Capacitor.	-
Max. lamp no. on MCB B type 10A – EM ballast with Compensation Capacitor.	-

MASTER LEDtube InstantFit HF T5

Max. lamp no. on MCB B type 16A – Mains	-
Max. lamp no. on MCB B type 16A – EM ballast without Compensation Capacitor.	-
Max. lamp no. on MCB B type 16A – EM ballast with Compensation Capacitor.	-
Ballast Compatibility	HF
Temperature	
T-Case Maximum (Nom)	50 °C
Controls and Dimming	
Dimmable	Yes - Check ballast compatibility
Mechanical and Housing	
Bulb Finish	Frosted
Bulb Material	Glass
Product Length	600 mm
Bulb Shape	T5
Net Weight (Piece)	0.085 kg
Approval and Application	
Energy Efficiency Class	E
Energy Saving Product	Yes
Approval Marks	RoHS compliance KEMA Keur certificate

Energy Consumption kWh/1000 h	7 kWh
EPREL Registration Number	1936620
CE mark	Yes
EU RoHS compliant	Yes
Ambient temperature range	-20 to +45 °C
Application Conditions	
can it be used in closed luminaires	Yes
Product Data	
Order product name	MAS LEDtube HF 600mm HE 7W 830 T5
Full product name	MAS LEDtube HF 600mm HE 7W 830 T5
Full product code	872016930966100
Order code	929003795102
Material Nr. (12NC)	929003795102
Numerator - Quantity Per Pack	1
EAN/UPC - Product/Case	8720169309661
Numerator - Packs per outer box	10
EAN/UPC - Case	8720169309678

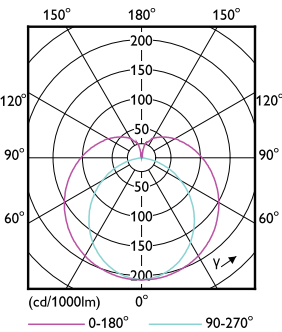
Dimensional drawing



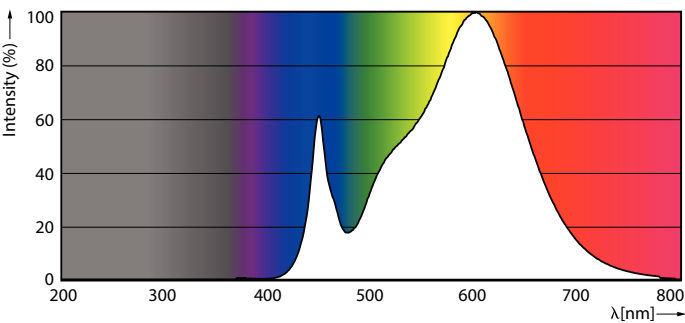
Product	D1	D2	A1	A2	A3
MAS LEDtube HF 600mm HE 7W 830 T5	15.7 mm	19 mm	549 mm	556 mm	563 mm

MASTER LEDtube InstantFit HF T5

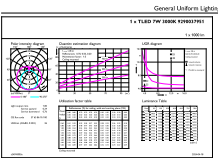
Photometric data



Light Distribution Diagram - MAS LEDtube HF 600mm HE 7W 830 T5



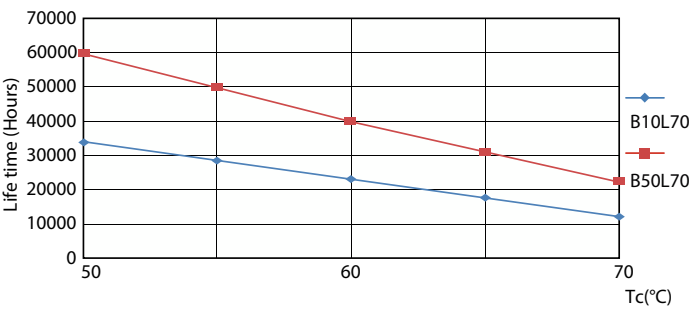
Spectral Power Distribution Colour - MAS LEDtube HF 600mm HE 7W 830 T5



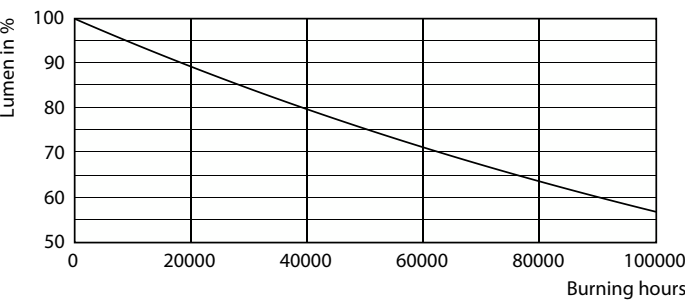
General uniform lighting

General uniform lighting - MAS LEDtube HF 600mm HE 7W 830 T5

Lifetime



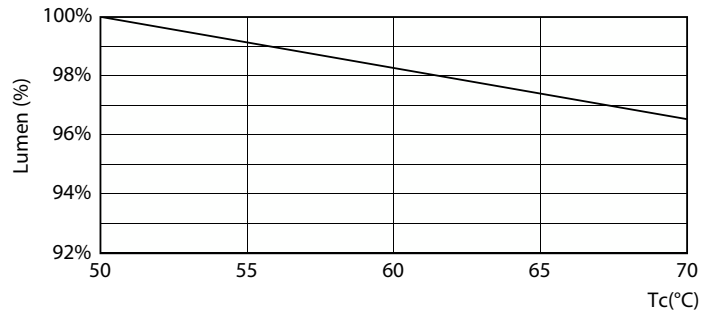
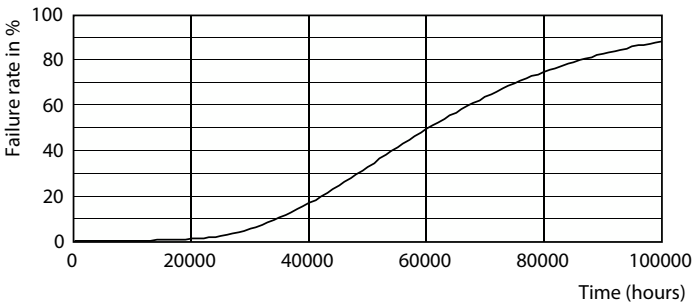
LEDtube 60K 5070 LifetimeVsTc-LED



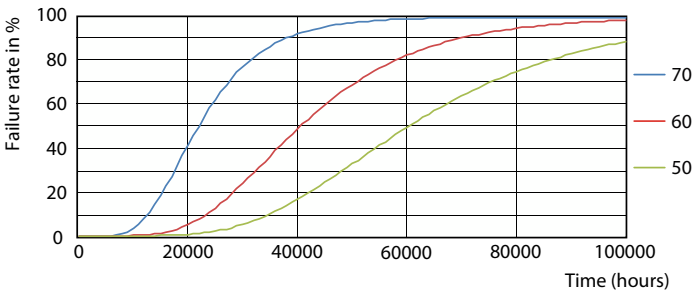
Lumen Maintenance Diagram - MAS LEDtube HF 600mm HE 7W 830 T5

MASTER LEDtube InstantFit HF T5

Lifetime



Life Expectancy Diagram



Lumen Maintenance Diagram - MAS LEDtube HF 600mm HE 7W 830 T5

LEDtube 60K 5070 FailureRate-LED

