



MASTER LED tube InstantFit HF T5



MAS LEDtube HF 600mm HE 7W 830 T5

MASTER, LEDtube, T5, HF, 600 mm, 7 W, 14W TL5 HE, 3000 K, 1000 lm, CRI 80, 60000 h

The Philips MASTER LEDtube integrates an LED light source into a traditional fluorescent form factor. Its unique design creates a perfectly uniform visual appearance, which cannot be distinguished from traditional fluorescents. These T5 lighting tubes are the right choice for absolute performance and are designed to stand up to everyday conditions. Unparalleled savings, thanks to low energy consumption and an exceptionally long lifetime, make these T5 LED tubes the choice for every demanding applications.

Product data

General Information	
Cap base	G5
Nominal lifetime	60,000 h
Switching Cycle	50,000
Lighting Technology	LEDtube
Flux measurement reference	Sphere
Warranty period	5 years
Light Technical	
Colour Code	830 [CCT of 3000K]
Beam angle (nom.)	200 degree(s)
Luminous Flux	1,000 lm
Colour designation	White (WH)
Correlated Colour Temperature (Nom)	3000 K

Luminous efficacy (rated) (nom.)	142 lm/W
Colour consistency	<6
Colour rendering index (CRI)	80
LLMF at end of nominal lifetime (nom.)	70 %
Photobiological safety according to EN 62471	RG0
Operating and Electrical	
Input frequency	30 K to 100 K Hz
Power Consumption	7 W
Lamp current (max.)	350 mA
Lamp current (min.)	150 mA
Starting time (nom.)	0.5 s
Warm-up time to 60% light	0.5 s
Power Factor (Fraction)	0.92

MASTER LED tube InstantFit HF T5

Voltage (nom.)	40-70 V
LED alternative to fluorescent lamp power	14W TL5 HE
Inrush current at mains	-
Max. lamp no. on MCB B type 10A – Mains	-
Max. lamp no. on MCB B type 10A – EM ballast without Compensation Capacitor.	-
Max. lamp no. on MCB B type 10A – EM ballast with Compensation Capacitor.	-
Max. lamp no. on MCB B type 16A – Mains	-
Max. lamp no. on MCB B type 16A – EM ballast without Compensation Capacitor.	-
Max. lamp no. on MCB B type 16A – EM ballast with Compensation Capacitor.	-
Ballast Compatibility	HF

Temperature

T-Case maximum (nom.)	50 °C
-----------------------	-------

Controls and Dimming

Dimmable	Yes – Check ballast compatibility
----------	-----------------------------------

Mechanical and Housing

Lamp Finish	Frosted
Bulb material	Glass
Product length	600 mm
Bulb shape	T5
Net Weight (Piece)	0.085 kg

Approval and Application

Energy Efficiency Class	E
-------------------------	---

Energy-saving product	Yes
Approval marks	RoHS compliance KEMA Keur certificate
Energy consumption kWh/1,000 hours	7 kWh
EPREL Registration Number	1936620
CE mark	Yes
EU RoHS compliant	Yes
Ambient temperature range	-20 to +45 °C

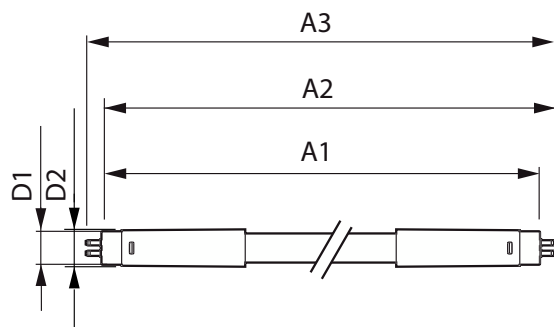
Application Conditions

Can it be used in closed luminaires	Yes
Wireless Technology	Not applicable

Product Data

Order product name	MAS LEDtube HF 600mm HE 7W 830 T5
Full product name	MAS LEDtube HF 600mm HE 7W 830 T5
Full EOC	872016930966100
Order code	929003795102
Material no. (12 NC)	929003795102
Numerator – quantity per pack	1
EAN/UPC – Product/Case	8720169309661
Numerator – packs per outer box	10
EAN/UPC – Case	8720169309678

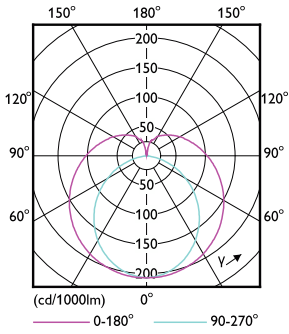
Dimensional drawing



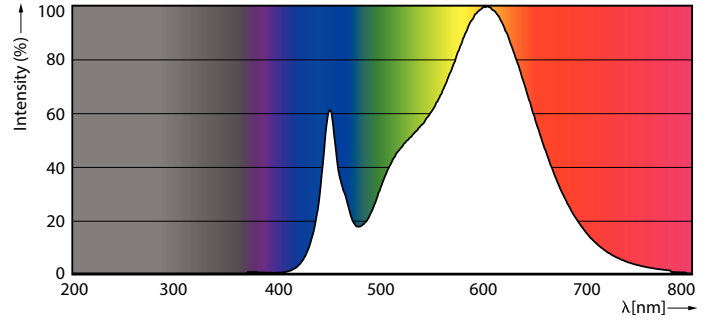
Product	D1	D2	A1	A2	A3
MAS LEDtube HF 600mm HE 7W 830 T5	15.7 mm	19 mm	549 mm	556 mm	563 mm

MASTER LED tube InstantFit HF T5

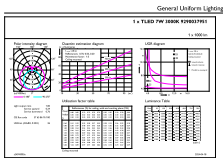
Photometric data



Light Distribution Diagram - MAS LEDtube HF 600mm HE 7W 830 T5

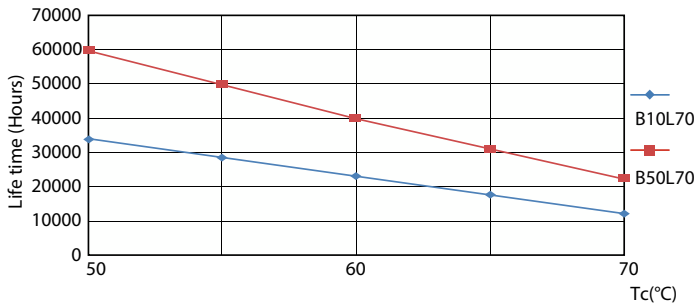


Spectral Power Distribution Colour - MAS LEDtube HF 600mm HE 7W 830 T5

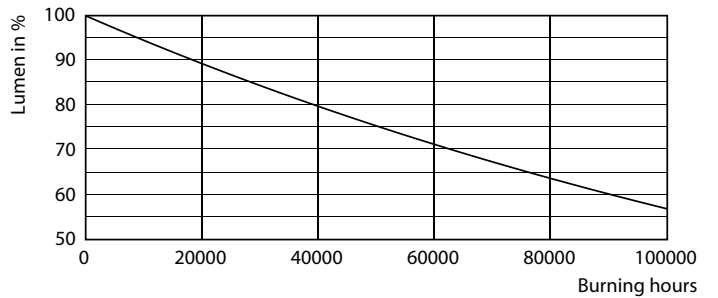


General uniform lighting - MAS LEDtube HF 600mm HE 7W 830 T5

Lifetime



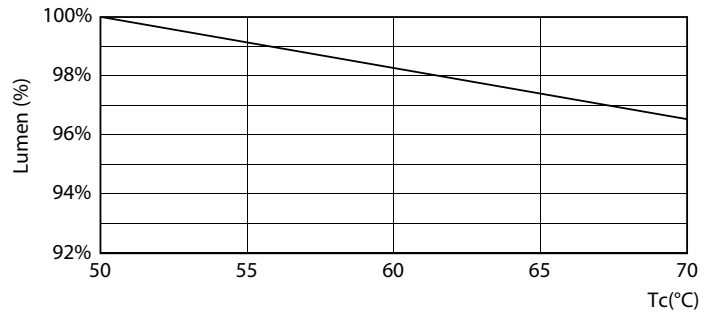
LEDtube 60K 5070 LifetimeVsTc-LED



Lumen Maintenance Diagram - MAS LEDtube HF 600mm HE 7W 830 T5

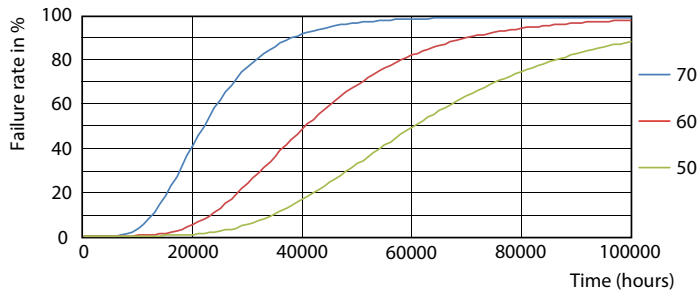
MASTER LED tube InstantFit HF T5

Lifetime



Life Expectancy Diagram

Lumen Maintenance Diagram - MAS LEDtube HF 600mm HE 7W 830 T5



LEDtube 60K 5070 FailureRate-LED

