



MASTER LED tube InstantFit HF T5



MAS LEDtube HF 600mm HE 7W 865 T5

MASTER, LEDtube, T5, HF, 600 mm, 7 W, 14W TL5 HE, 6500 K, 1050 lm, CRI 80, 60000 h

The Philips MASTER LEDtube integrates an LED light source into a traditional fluorescent form factor. Its unique design creates a perfectly uniform visual appearance, which cannot be distinguished from traditional fluorescents. These T5 lighting tubes are the right choice for absolute performance and are designed to stand up to everyday conditions. Unparalleled savings, thanks to low energy consumption and an exceptionally long lifetime, make these T5 LED tubes the choice for every demanding applications.

Product data

General Information		Operating and Electrical	
Cap base	G5	Luminous efficacy (rated) (nom.)	150 lm/W
Nominal lifetime	60,000 h	Colour consistency	<6
Switching Cycle	50,000	Colour rendering index (CRI)	80
Lighting Technology	LEDtube	LLMF at end of nominal lifetime (nom.)	70 %
Flux measurement reference	Sphere	Photobiological safety according to EN 62471	RG0
Warranty period	5 years		
Light Technical			
Colour Code	865 [CCT of 6500K]	Input frequency	30 K to 100 K Hz
Beam angle (nom.)	200 degree(s)	Power Consumption	7 W
Luminous Flux	1,050 lm	Lamp current (max.)	350 mA
Colour designation	Cool Daylight	Lamp current (min.)	150 mA
Correlated Colour Temperature (Nom)	6500 K	Starting time (nom.)	0.5 s
		Warm-up time to 60% light	0.5 s
		Power Factor (Fraction)	0.92

MASTER LED tube InstantFit HF T5

Voltage (nom.)	40-70 V
LED alternative to fluorescent lamp power	14W TL5 HE
Inrush current at mains	-
Max. lamp no. on MCB B type 10A – Mains	-
Max. lamp no. on MCB B type 10A – EM ballast without Compensation Capacitor.	-
Max. lamp no. on MCB B type 10A – EM ballast with Compensation Capacitor.	-
Max. lamp no. on MCB B type 16A – Mains	-
Max. lamp no. on MCB B type 16A – EM ballast without Compensation Capacitor.	-
Max. lamp no. on MCB B type 16A – EM ballast with Compensation Capacitor.	-
Ballast Compatibility	HF

Temperature

T-Case maximum (nom.)	50 °C
-----------------------	-------

Controls and Dimming

Dimmable	Yes – Check ballast compatibility
----------	-----------------------------------

Mechanical and Housing

Lamp Finish	Frosted
Bulb material	Glass
Product length	600 mm
Bulb shape	T5
Net Weight (Piece)	0.085 kg

Approval and Application

Energy Efficiency Class	D
-------------------------	---

Energy-saving product	Yes
Approval marks	RoHS compliance KEMA Keur certificate
Energy consumption kWh/1,000 hours	7 kWh
EPREL Registration Number	1936618
CE mark	Yes
EU RoHS compliant	Yes
Ambient temperature range	-20 to +45 °C

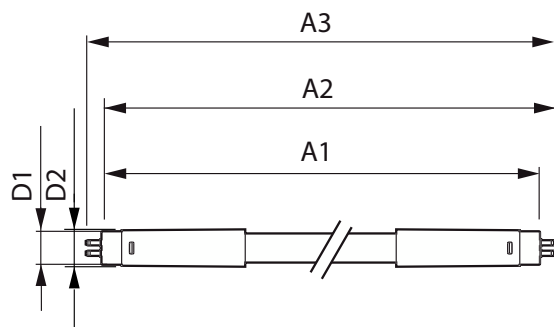
Application Conditions

Can it be used in closed luminaires	Yes
Wireless Technology	Not applicable

Product Data

Order product name	MAS LEDtube HF 600mm HE 7W 865 T5
Full product name	MAS LEDtube HF 600mm HE 7W 865 T5
Full EOC	872016930970800
Order code	929003795302
Material no. (12 NC)	929003795302
Numerator – quantity per pack	1
EAN/UPC – Product/Case	8720169309708
Numerator – packs per outer box	10
EAN/UPC – Case	8720169309715

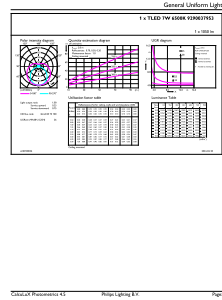
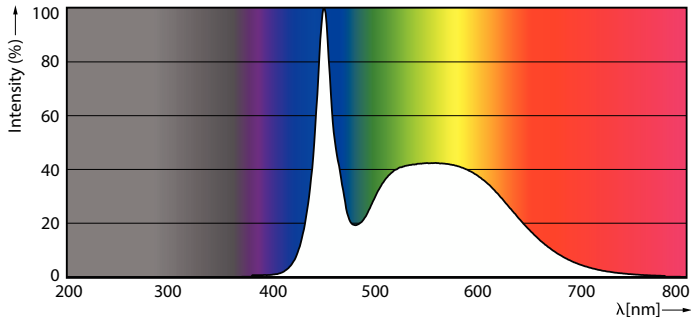
Dimensional drawing



Product	D1	D2	A1	A2	A3
MAS LEDtube HF 600mm HE 7W 865 T5	15.7 mm	19 mm	549 mm	556 mm	563 mm

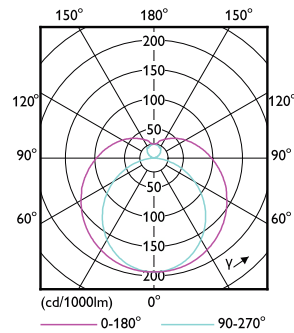
MASTER LED tube InstantFit HF T5

Photometric data



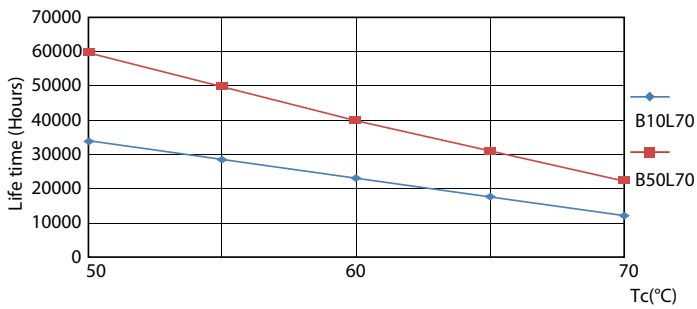
Spectral Power Distribution Colour - MAS LEDtube HF 600mm HE 7W 865 T5

General uniform lighting - MAS LEDtube HF 600mm HE 7W 865 T5

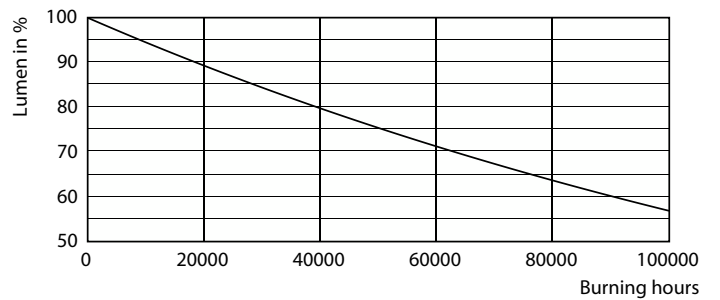


Light Distribution Diagram - MAS LEDtube HF 600mm HE 7W 865 T5

Lifetime



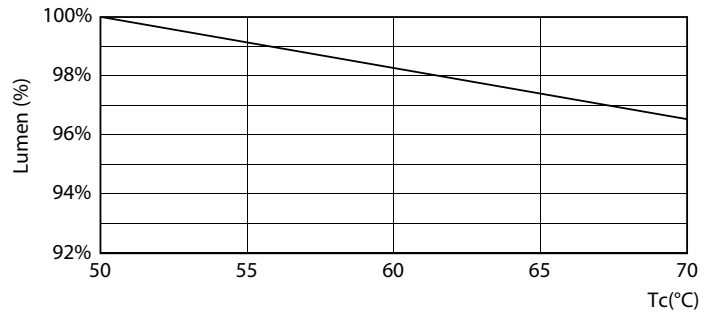
LEDtube 60K 5070 LifetimeVsTc-LED



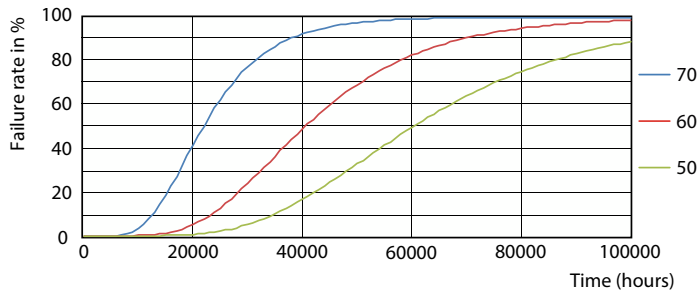
Lumen Maintenance Diagram - MAS LEDtube HF 600mm HE 7W 865 T5

MASTER LED tube InstantFit HF T5

Lifetime



Life Expectancy Diagram



Lumen Maintenance Diagram - MAS LEDtube HF 600mm HE 7W 865 T5

LEDtube 60K 5070 FailureRate-LED

