

# MASTER LED tube Mains T5



## MAS LEDtube 600mm HE 7W 865 T5 EU

MASTER, LEDtube, T5, Mains, 600 mm, 7 W, 14W TL5 HE, 6500 K, 1050 lm, CRI 80, 60000 h

The new Philips Master LEDtube Mains T5 brings simplicity to your lighting project. You don't need to pay attention to the driver technology anymore. Thanks to a unique design, Philips MASTER LEDtube Mains T5 installs in luminaires operating on mains power connection. So simple to operate! . Perfectly safe, reliable & easy to install, the Philips MASTER LEDtube Mains T5 is the ideal alternative to standard fluorescent tubes to maximise value over lifetime with high energy savings and lower maintenance costs.

### Product data

General Information	
Cap base	G5
Nominal lifetime	60,000 h
Switching Cycle	200,000
Lighting Technology	LEDtube
Flux measurement reference	Sphere
Warranty period	5 years
Light Technical	
Colour Code	865 [CCT of 6500K]
Beam angle (nom.)	200 degree(s)
Luminous Flux	1,050 lm
Colour designation	Cool Daylight
Correlated Colour Temperature (Nom)	6500 K

Luminous efficacy (rated) (nom.)	150 lm/W
Colour consistency	<6
Colour rendering index (CRI)	80
LLMF at end of nominal lifetime (nom.)	70 %
Photobiological safety according to EN 62471	RG0
Operating and Electrical	
Input frequency	50 to 60 Hz
Power Consumption	7 W
Lamp current (nom.)	32 mA
Starting time (nom.)	0.5 s
Warm-up time to 60% light	0.5 s
Power Factor (Fraction)	0.9
Voltage (nom.)	220-240 V

# MASTER LED tube Mains T5

LED alternative to fluorescent lamp power	14W TL5 HE
Inrush current at mains	4.5
Max. lamp no. on MCB B type 10A – Mains	160
Max. lamp no. on MCB B type 10A – EM ballast without Compensation Capacitor.	-
Max. lamp no. on MCB B type 10A – EM ballast with Compensation Capacitor.	-
Max. lamp no. on MCB B type 16A – Mains	254
Max. lamp no. on MCB B type 16A – EM ballast without Compensation Capacitor.	-
Max. lamp no. on MCB B type 16A – EM ballast with Compensation Capacitor.	-
Ballast Compatibility	Mains

## Temperature

T-Case maximum (nom.)	50 °C
-----------------------	-------

## Controls and Dimming

Dimmable	No
----------	----

## Mechanical and Housing

Lamp Finish	Frosted
Bulb material	Glass
Product length	600 mm
Bulb shape	T5
Net Weight (Piece)	0.070 kg

## Approval and Application

Energy Efficiency Class	D
-------------------------	---

Energy-saving product	Yes
Approval marks	RoHS compliance KEMA Keur certificate
Energy consumption kWh/1,000 hours	7 kWh
EPREL Registration Number	1840375
CE mark	Yes
EU RoHS compliant	Yes
Flickering value (PstLM)	1
Stroboscopic effect	0.4
Ambient temperature range	-20 to +45 °C

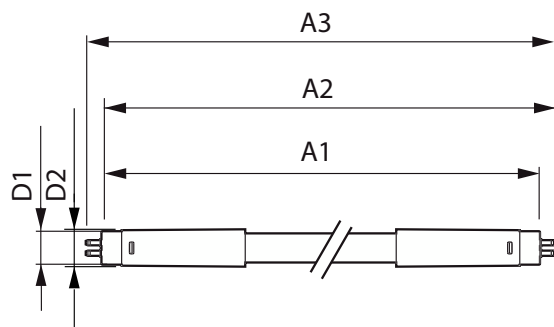
## Application Conditions

Can it be used in closed luminaires	Yes
Wireless Technology	Not applicable

## Product Data

Order product name	MAS LEDtube 600mm HE 7W 865 T5 EU
Full product name	MAS LEDtube 600mm HE 7W 865 T5 EU
Full EOC	872016930684400
Order code	929003795602
Material no. (12 NC)	929003795602
Numerator – quantity per pack	1
EAN/UPC – Product/Case	8720169306844
Numerator – packs per outer box	10
EAN/UPC – Case	8720169306851

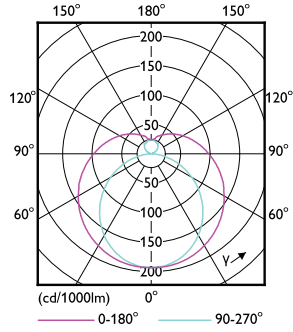
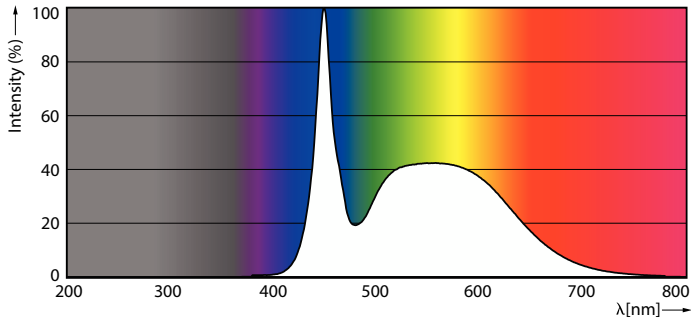
## Dimensional drawing



Product	D1	D2	A1	A2	A3
MAS LEDtube 600mm HE 7W 865 T5 EU	15.7 mm	19 mm	549 mm	556.1 mm	563.2 mm

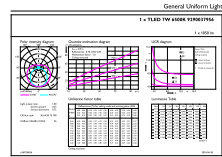
# MASTER LED tube Mains T5

## Photometric data



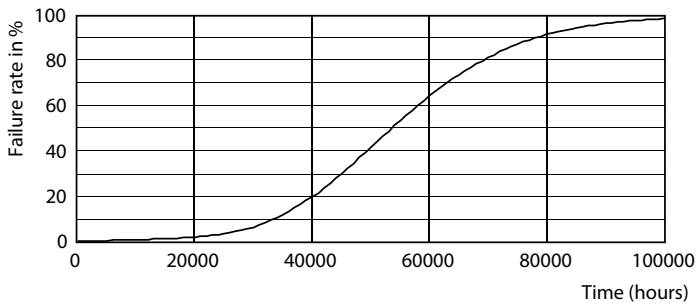
Spectral Power Distribution Colour - MAS LEDtube 600mm HE 7W 865 T5 EU

Light Distribution Diagram - MAS LEDtube 600mm HE 7W 865 T5 EU

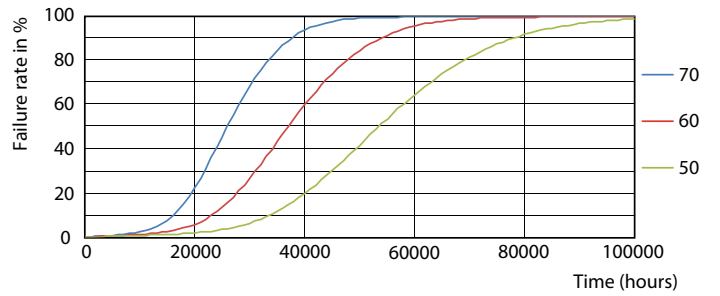


General uniform lighting - MAS LEDtube 600mm HE 7W 865 T5 EU

## Lifetime



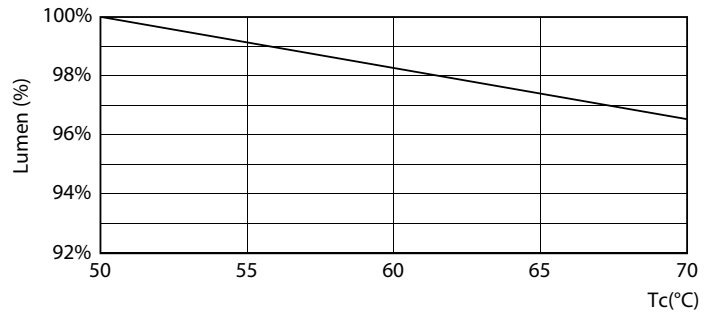
Life Expectancy Diagram



FailureRate

# MASTER LED tube Mains T5

## Lifetime



LifetimeVsTc

Lumen Maintenance Diagram - MAS LEDtube 600mm HE 7W 865 T5 EU



Lumen Maintenance Diagram - MAS LEDtube 600mm HE 7W 865 T5 EU

