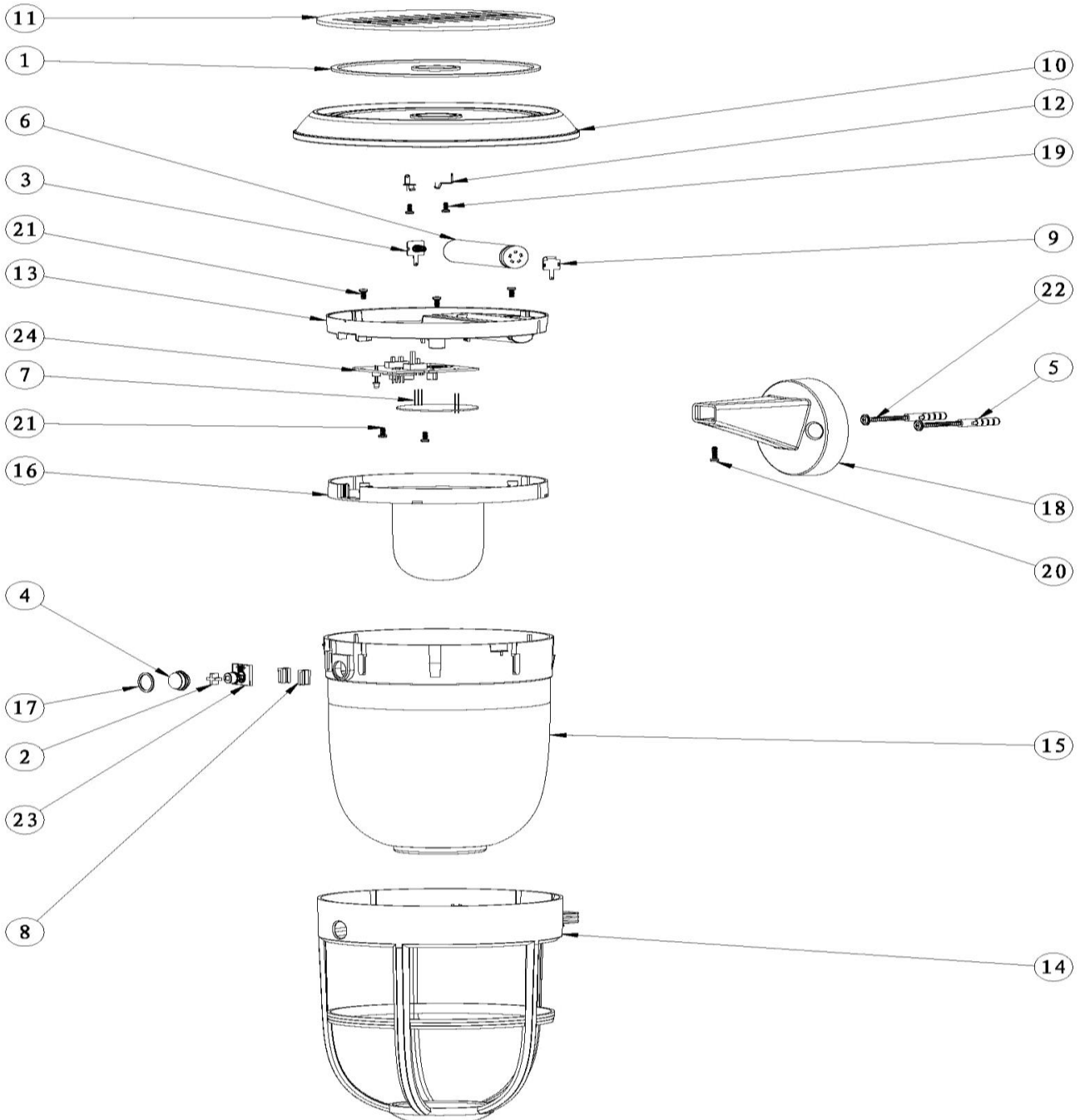


Dismantling Recommendation on Disposal at End of Life

Composition Explanation



Dismantling Recommendation on Disposal at End of Life

Composition Explanation

No.	Components	Specifications	Unit	Quantity
1	silicone glue	silicone	ML	3
2	5mm Induction Head Mount	ABS	PCS	1
3	Negative pole Shrapnel	copper	PCS	1
4	Lens (with holder)	PE	PCS	1
5	Φ6 pellet	PE	PCS	2
6	li-ion battery	/	PCS	1
7	LED light panel	/	PCS	1
8	Circuit Board Holder	ABS	PCS	2
9	Positive Pole Shrapnel	copper	PCS	1
10	roof	PC	PCS	1
11	solar panel	Photovoltaic glass	PCS	1
12	Solar Panel Shrapnel	copper	PCS	2
13	battery compartment	PC	PCS	1
14	protective cover	PC	PCS	1
15	transparent cover	PC	PCS	1
16	cover of lamp	PC	PCS	1
17	Sensor Rubber Ring	silicone	PCS	1
18	cantilever	PC	PCS	1
19	2.6x6 screws	nickel-plated	PCS	2
20	3x10 screws	stainless steels	PCS	1
21	3x6 screws	nickel-plated	PCS	5
22	4x35 screws	stainless steels	PCS	2
23	Sensor Signal Board	/	PCS	1
24	control board	/	PCS	1

Dismantling Recommendation on Disposal at End of Life

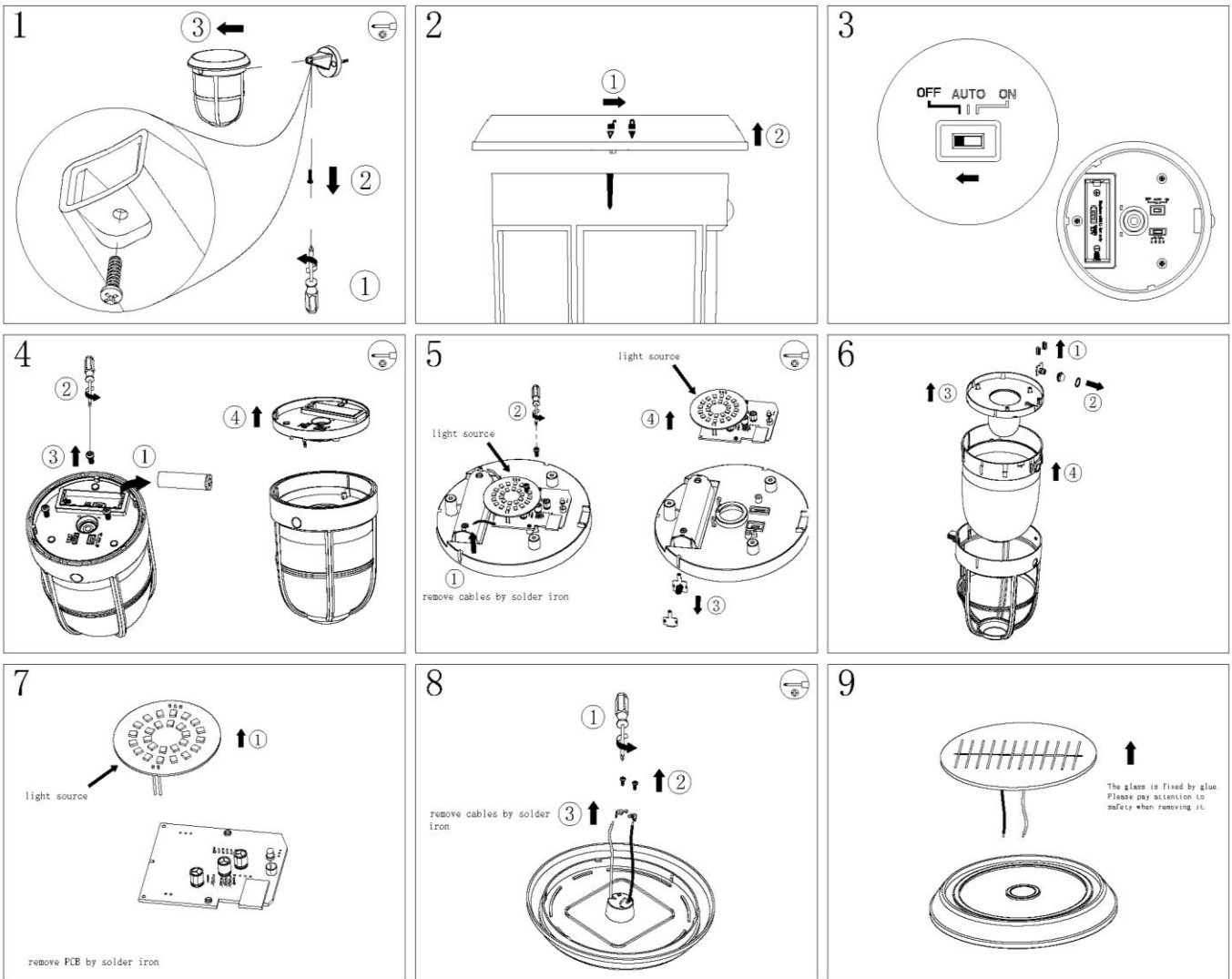
Dismantling

- Type: Without permanent damage

Recommendation on Disposal

- Plastic part: Reuse and Recycling
- Electrical part: Incineration and disposal
- Metal part: Recycling

Dismantling process



Replace light source

