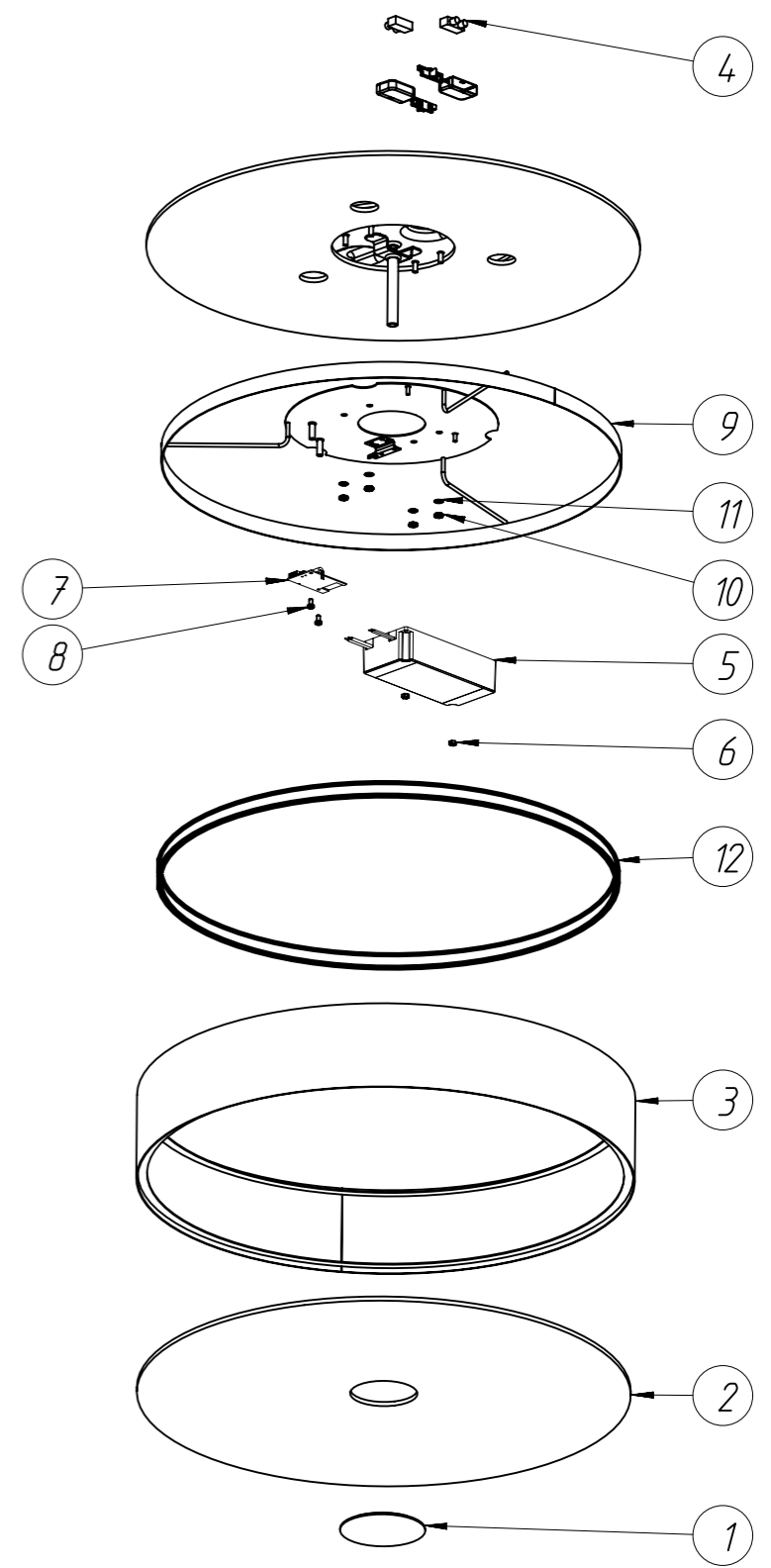


# PHILIPS hue

**Warnings**

Always make sure the luminaire is detached from the mains socket  
 Always make sure the DC cable is detached from the power supply  
 Staring at the operating light source may cause eye injury



#	Disassemble/dismantle steps	Tools needed
a	Remove wires out of the terminal blocks (4)	FLATHEAD SCREWDRIVER
b	Remove the deco part (1) by turning it counterclockwise.	-
c	Remove the glass (2).	-
d	Remove the deco ring (3).	-
e	Remove flat cable from the LIGHT SOURCE - LED STRIP [12] and LIGHT SOURCE - HUE CONNECT [7]	-
f	Remove the CONTROL GEAR – PSU (5) from the heat sink (9) by unscrewing nuts (6).	SOCKET WRENCH
g	Remove the LIGHT SOURCE - HUE CONNECT (7) from the heat sink (9) by unscrewing screws (8)	TORXHEAD SCREW DRIVER T10
h	Remove low voltage wires of the cable of LIGHT SOURCE - HUE CONNECT (7)	FLATHEAD SCREWDRIVER OR WAGO TOOL #2065
i	Remove HEAT SINK (9) by unscrewing nuts (10).	SOCKET WRENCH
j	Remove light strip (12) acc. to instruction: 442295215544_L2 Removal and Test Instruction Flex LED strip	See instruction.

- A specific Wago tool #2065 can be ordered separately for wire insertion and release tool:



#	COMPONENT	QTY
1	DECO PART	1
2	GLASS	1
3	DECO RING	1
4	TERMINAL BLOCK	2
5	CONTROL GEAR - PSU	1
6	NUT	2
7	LIGHT SOURCE - HUE CONNECT	1
8	SCREW	2
9	HEAT SINK	1
10	NUT	4
11	WASHER	4
12	LIGHT SOURCE - LED STRIP	1

SKU	Color	Country
929003054601	WHITE	EU
929003054701	BLACK	EU

STATUS	DESCRIPTION	DESIGN ID	01	2021-07-23
	D0071044	D0071044		
Fair ceiling Disassembly instructions		DOC 12NC		
NAME	Goris, Herman	LOCAL PART ID	SH. 2	SH. 511
CHECKED		DATE	2021-07-23	A3-L
CONFIDENTIAL, PROPERTY OF: © 2021 Signify Holding				

