

# CHLORIDE

by Signify

## Exit/Emergency

MTD series

Transfer device



Project:

Location:

Cat.No:

Type:

Lamps:

Qty:

Notes:

## Ordering Information

Catalog Number	Description
MTD	Chloride (Auxiliary Power) Transfer Device (for internal luminaire mounting)

### codes and standards

- UL 924 "Auxiliary Power and Lighting Equipment" listed.
- UL listed for factory or field installation.
- UL damp location listing standard.

### application

- Emergency illumination is provided to designated fluorescent luminaires by transferring backup generator or inverter power to the AC ballast. The designated emergency luminaire can be locally switched, and will provide full rated light output when operating from emergency power. Upon utility failure, the unit shall automatically transfer auxiliary power to the AC ballast and provide full lumen output from the designated emergency luminaire.

### construction

- The MTD20 is slim with the recessed portion only Housing and cover are constructed of 24 gauge galvanized steel.
- Housing is low profile: 8" x 1.18" x 1.18".
- Weight: 0.50 lbs.

### installation

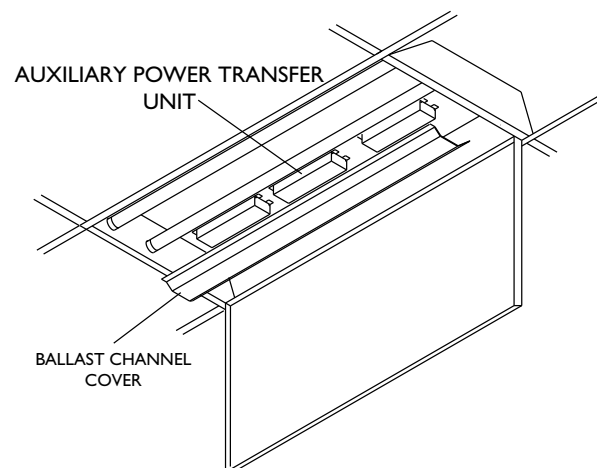
- The MTD shall be easily field connected to a 120 or 277 VAC, 60HZ, unswitched power source.
- Unit shall also be easily field connected to an auxiliary power source such as a generator or AC inverter system.
- Installation must comply with the NEC as well as other applicable codes.
- The MTD is suitable for indoor or damp locations and for sealed and gasketed fixtures.
- The MTD can be factory or field installed in the luminaire's ballast channel or mounted on top when using the supplied end cap.

### electronics

- Dual input voltage 120/277VAC
- Temperature rating 32°F (0°C) to 122°F (50°C).
- Power Consumption: AC input current: 280 mA; AC input power rating: 1.6W.
- Unit shall have 120/277 VAC dual input voltage and all inputs shall be fused to 3 amps.
- Transfer to the emergency mode shall be automatic and independent of the wall switch position.

### warranty

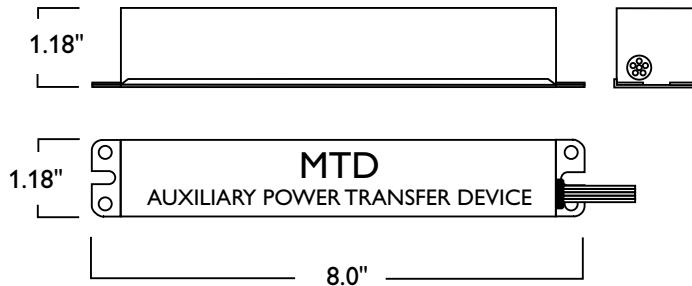
- Five year warranty from date of purchase.



# MTD Transfer device

For internal luminaire mounting, 120/277VAC

## dimensions



## wiring

