



Lumece **Ancestra** LED pendant luminaires present a new twist on a classic design. By combining the best aspects of past and present forms with the best that modern technology has to offer, the **Ancestra** luminaires epitomizes Lumece's design philosophy beautifully: to combine the best technology with elegant design.

Project: \_\_\_\_\_

Location: \_\_\_\_\_

Cat.No: \_\_\_\_\_

Type: \_\_\_\_\_

Lamps: \_\_\_\_\_ Qty: \_\_\_\_\_

Notes: \_\_\_\_\_

### Ordering guide

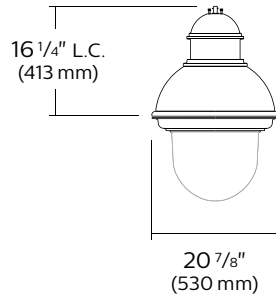
example: AT50-C-140L650NW-G1-3-UNV-DMG-BKTX

| Series  | LED module   | Gen.                 | Optical system  | Ballast  | Driver options <sup>3</sup>   | Adapter   | Luminaire options   | Poles /Brackets  | Finish  |
|---|--|----------------------|---|--|---|---|---|--|---|
| <input type="text"/>  | <input type="text"/>   | <input type="text"/> | <input type="text"/>  | <input type="text"/>   | <input type="text"/>  | <input type="text"/>  |   | <input type="text"/>   | <input type="text"/>  |
| AT50-C  | <b>3000K</b><br>140L450WW <sup>5</sup><br>140L650WW <sup>5</sup><br>140L1150WW<br>140L1675WW<br>140L2100WW<br><b>4000K</b><br>140L450NW <sup>5</sup><br>140L650NW <sup>5</sup><br>140L1150NW<br>140L1675NW<br>140L2100NW | G1<br>Gen1           | 1 Type I (ASYM)<br>2 Type II (ASYM)<br>3 Type III (ASYM)<br>4 Type IV (ASYM)<br>5 Type V (SYMM) | <b>UNV</b><br>120-277VAC<br><b>347</b><br>347VAC<br><b>480</b><br>480VAC | <b>CDMGE25</b> <sup>1</sup><br>Economy 8 hrs. 25% reduction<br><b>CDMGE50</b> <sup>1</sup><br>Economy 8 hrs. 50% reduction<br><b>CDMGE75</b> <sup>1</sup><br>Economy 8 hrs. 75% reduction<br><b>CDMGM25</b> <sup>1</sup><br>Median 6 hrs. 25% reduction<br><b>CDMGM50</b> <sup>1</sup><br>Median 6 hrs. 50% reduction<br><b>CDMGM75</b> <sup>1</sup><br>Median 6 hrs. 75% reduction<br><b>CDMGS25</b> <sup>1</sup><br>Safety 4 hrs. 25% reduction<br><b>CDMGS50</b> <sup>1</sup><br>Safety 4 hrs. 50% reduction<br><b>CDMGS75</b> <sup>1</sup><br>Safety 4 hrs. 75% reduction<br><b>DMG</b><br>0-10V<br><b>DALI</b> <sup>1,4</sup><br>DALI compatible<br><b>SRD</b> <sup>1</sup><br>Sensor ready driver, standard configuration<br><b>SRD1</b> <sup>1</sup><br>Sensor ready driver, alternate configuration | <b>MA1</b><br>1 1/4" NPT threaded hole adapter accepting threaded tube<br><b>MA2</b><br>1 1/2" NPT threaded hole adapter accepting threaded tube<br><b>SMA</b><br>Decorative retro side-mounted cast-aluminum, accepts tubes from 1 5/8" to 2 3/8"<br><b>SMB</b><br>Decorative contemporary side-mounted cast-aluminum, accepts tubes from 1 5/8" to 2 3/8" | <b>CR20</b><br><b>CR30</b><br><b>CR40</b><br><b>DA</b><br>Decorative Arches<br><b>DC</b><br>Decorative Cap<br><b>GRD</b><br><b>PH7</b> <sup>6</sup><br><b>PH8</b> <sup>4</sup><br>Twist-lock Photoelectric Cell<br><b>PHXL</b> <sup>1</sup><br>Twist-lock Photoelectric Cell, extended life, UNV (120-277VAC)<br><b>PH9</b> <sup>4</sup><br>Shorting cap<br><b>RC</b> <sup>2</sup><br>Receptacle for twist-lock photocell or shorting cap, 3-pin<br><b>RCD</b> <sup>2</sup><br>Receptacle for twist-lock photocell or shorting cap, 5-pin<br><b>RCD7</b> <sup>2,7</sup><br>Receptacle for twist-lock photocell or shorting cap, 7-pin<br><b>SP2</b><br>20kV/10kA Surge Protector (optional) | Consult with Signify.com/luminaires for details and the complete line of poles and brackets. | <b>Textured</b><br><b>BE2TX</b><br>Midnight Blue<br><b>BE6TX</b><br>Ocean Blue<br><b>BE8TX</b><br>Royal Blue<br><b>BG2TX</b><br>Sandstone<br><b>BKTX</b><br>Black<br><b>BRTX</b><br>Bronze<br><b>GN4TX</b><br>Blue Green<br><b>GN6TX</b><br>Forest Green<br><b>GN8TX</b><br>Dark Forest Green<br><b>GNTX</b><br>Green<br><b>GY3TX</b><br>Medium Grey<br><b>RD2TX</b><br>Burgundy<br><b>RD4TX</b><br>Scarlet<br><b>WHTX</b><br>White<br><b>Other</b><br><b>GR</b><br>Gray Sandtex<br><b>NP</b><br>Natural Aluminum<br><b>TG</b><br>Hammertone Gold |
| 1. Not available with <b>347V</b> and <b>480V</b> .<br>2. Use of photoelectric cell or shorting cap is required to ensure proper illumination.<br>3. Select either <b>CDMG</b> or <b>DMG</b> or <b>DALI</b> mandatory option.<br>4. <b>RC</b> , <b>RCD</b> or <b>RCD7</b> must be selected for this option<br>5. For 240 or 277 volt with <b>DALI</b> or <b>CDMG</b> options consult factory.<br>6. Not available with <b>480V</b> .<br>7. <b>SMB</b> adaptors is required for this option. |  |                      |   |  |   |   |   |  |   |

# AT50-C Ancestra LED Pendant

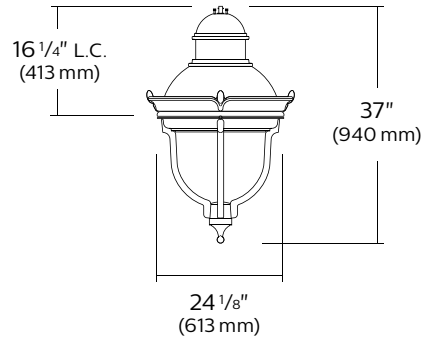
## Urban Luminaire

### Dimensions



**AT50**

EPA: 1.35 sq.ft.  
Weight: 35.5 lbs. (16.1 kg)



**AT50**

(shown w/CR30 & GRD)

EPA: 1.58 sq.ft.  
Weight: 51.5 lbs. (23.3 kg)

### LED Wattage and Lumen Values: for AT50

#### 3000K

| Ordering Code:<br>Flat lens (3000K) | Total<br>LEDs | LED<br>current<br>(mA) | Average<br>System<br>Wattage<br>(W) | Type 1          |                   |            | Type 2          |                   |            | Type 3          |                   |            |
|-------------------------------------|---------------|------------------------|-------------------------------------|-----------------|-------------------|------------|-----------------|-------------------|------------|-----------------|-------------------|------------|
|                                     |               |                        |                                     | Lumen<br>Output | Efficacy<br>(LPW) | BUG Rating | Lumen<br>Output | Efficacy<br>(LPW) | BUG Rating | Lumen<br>Output | Efficacy<br>(LPW) | BUG Rating |
| 140L450WW-G1                        | 140           | 450                    | 21                                  | 1916            | 91                | B1-U0-G1   | 1930            | 92                | B1-U0-G1   | 2029            | 97                | B1-U0-G1   |
| 140L650WW-G1                        | 140           | 650                    | 30                                  | 2680            | 89                | B2-U0-G2   | 2520            | 84                | B1-U0-G1   | 2649            | 88                | B1-U0-G1   |
| 140L1150WW-G1                       | 140           | 1150                   | 52                                  | 4562            | 88                | B2-U0-G2   | 4288            | 82                | B2-U0-G2   | 4508            | 87                | B2-U0-G2   |
| 140L1675WW-G1                       | 140           | 1675                   | 75                                  | 6265            | 84                | B3-U0-G3   | 5889            | 79                | B3-U0-G3   | 6191            | 83                | B2-U0-G2   |
| 140L2100WW-G1                       | 140           | 2100                   | 94                                  | 7602            | 81                | B3-U0-G3   | 7146            | 76                | B3-U0-G3   | 7512            | 80                | B3-U0-G3   |

| Ordering Code:<br>Flat lens (3000K) | Total<br>LEDs | LED current<br>(mA) | Average Sys-<br>tem Wattage<br>(W) | Type 4          |                   |            | Type 5          |                   |            |
|-------------------------------------|---------------|---------------------|------------------------------------|-----------------|-------------------|------------|-----------------|-------------------|------------|
|                                     |               |                     |                                    | Lumen<br>Output | Efficacy<br>(LPW) | BUG Rating | Lumen<br>Output | Efficacy<br>(LPW) | BUG Rating |
| 140L450WW-G1                        | 140           | 450                 | 21                                 | 2110            | 100               | B1-U0-G1   | 1976            | 94                | B1-U0-G1   |
| 140L650WW-G1                        | 140           | 650                 | 30                                 | 2755            | 92                | B1-U0-G1   | 2764            | 92                | B2-U0-G1   |
| 140L1150WW-G1                       | 140           | 1150                | 52                                 | 4688            | 90                | B2-U0-G2   | 4705            | 90                | B3-U0-G2   |
| 140L1675WW-G1                       | 140           | 1675                | 75                                 | 6438            | 86                | B2-U0-G2   | 6461            | 86                | B3-U0-G2   |
| 140L2100WW-G1                       | 140           | 2100                | 94                                 | 7812            | 83                | B3-U0-G3   | 7840            | 83                | B3-U0-G2   |

Actual performance may vary due to installation variables including optics, mounting/ceiling height, dirt depreciation, light loss factor, etc.; highly recommended to confirm performance with a layout - contact Applications at [signify.com/outdoorluminaires](mailto:signify.com/outdoorluminaires).

**Note:** Some data may be scaled based on tests of similar. But not identical luminaires.

# AT50-C Ancestra LED Pendant

## Urban Luminaire

LED Wattage and Lumen Values: for AT50

4000K

| Ordering Code:<br>Flat lens (3000K) | Total<br>LEDs | LED<br>current<br>(mA) | Average<br>System<br>Wattage<br>(W) | Type 1          |                   |            | Type 2          |                   |            | Type 3          |                   |            |
|-------------------------------------|---------------|------------------------|-------------------------------------|-----------------|-------------------|------------|-----------------|-------------------|------------|-----------------|-------------------|------------|
|                                     |               |                        |                                     | Lumen<br>Output | Efficacy<br>(LPW) | BUG Rating | Lumen<br>Output | Efficacy<br>(LPW) | BUG Rating | Lumen<br>Output | Efficacy<br>(LPW) | BUG Rating |
| 140L450NW-G1                        | 140           | 450                    | 21                                  | 1916            | 91                | B1-U0-G1   | 1930            | 92                | B1-U0-G1   | 2029            | 97                | B1-U0-G1   |
| 140L650NW-G1                        | 140           | 650                    | 30                                  | 2680            | 89                | B2-U0-G2   | 2520            | 84                | B1-U0-G1   | 2649            | 88                | B1-U0-G1   |
| 140L1150NW-G1                       | 140           | 1150                   | 52                                  | 4562            | 88                | B2-U0-G2   | 4288            | 82                | B2-U0-G2   | 4508            | 87                | B2-U0-G2   |
| 140L1675NW-G1                       | 140           | 1675                   | 75                                  | 6265            | 84                | B3-U0-G3   | 5889            | 79                | B3-U0-G3   | 6191            | 83                | B2-U0-G2   |
| 140L2100NW-G1                       | 140           | 2100                   | 94                                  | 7602            | 81                | B3-U0-G3   | 7146            | 76                | B3-U0-G3   | 7512            | 80                | B3-U0-G3   |

| Ordering Code:<br>Flat lens (3000K) | Total<br>LEDs | LED current<br>(mA) | Average Sys-<br>tem Wattage<br>(W) | Type 4          |                   |            | Type 5          |                   |            |
|-------------------------------------|---------------|---------------------|------------------------------------|-----------------|-------------------|------------|-----------------|-------------------|------------|
|                                     |               |                     |                                    | Lumen<br>Output | Efficacy<br>(LPW) | BUG Rating | Lumen<br>Output | Efficacy<br>(LPW) | BUG Rating |
| 140L450WW-G1                        | 140           | 450                 | 21                                 | 2110            | 100               | B1-U0-G1   | 1976            | 94                | B1-U0-G1   |
| 140L650WW-G1                        | 140           | 650                 | 30                                 | 2755            | 92                | B1-U0-G1   | 2764            | 92                | B2-U0-G1   |
| 140L1150WW-G1                       | 140           | 1150                | 52                                 | 4688            | 90                | B2-U0-G2   | 4705            | 90                | B3-U0-G2   |
| 140L1675WW-G1                       | 140           | 1675                | 75                                 | 6438            | 86                | B2-U0-G2   | 6461            | 86                | B3-U0-G2   |
| 140L2100WW-G1                       | 140           | 2100                | 94                                 | 7812            | 83                | B3-U0-G3   | 7840            | 83                | B3-U0-G2   |

Actual performance may vary due to installation variables including optics, mounting/ceiling height, dirt depreciation, light loss factor, etc.; highly recommended to confirm performance with a layout - contact Applications at [signify.com/outdoorluminaires](http://signify.com/outdoorluminaires).

**Note:** Some data may be scaled based on tests of similar. But not identical luminaires.

# AT50-C Ancestra LED Pendant

## Urban Luminaire

### Specifications

#### Housing

**Hood:** Spun aluminum 1100 0 dome, mechanically assembled on the luminaire.

**Housing:** In a round shape, this housing is made of cast 356 aluminum, c/w a watertight grommet, mechanically assembled to the bracket with four bolts 3/8 16 UNC. This suspension system permits for a full rotation of the luminaire in 90° increments.

#### Access-mechanism

A die cast A360 aluminum technical ring with latch, hinge and a cast in decorative skirt. The mechanism shall offer tool free access to the inside of the luminaire. An embedded memory retentive gasket shall ensure weatherproofing.

#### Light engine

**LEDgine composed of 5 main components:**

Heat Sink / Lens / LED lamp / Driver / Optical System. Electrical components are RoHS compliant.

#### Optical System

The advanced LED comfort optical system provides Types 1, 2, 3, 4 and 5. Composed of high performance UV-stabilized optical grade lens with molded micro-optics to achieve desired distribution optimized to get a exceptional lighting uniformity. Performance tested per LM-79 and TM-15 (IESNA) certifying its photometric performance. Street side indicated luminaire designed with 0% uplight (UO per IESNA TM-15).

#### Driver

High power factor of 95%. Electronic driver, operating range 50/60 Hz. Auto adjusting universal voltage input from 120 to 277 and 347 to 480 VAC rated or both application line to line or line to neutral, Class 2, THD of 20% max. Maximum ambient operating temperature from 40°F (40°C) to 130°F (50°C). Certified in compliance to UL1310 cULus requirement. Dry and damp location. Assembled on a unitized removable tray with Tyco quick disconnect plug resisting to 221°F (105°C). Dimmable driver 0-10V. The current supplying the LEDs will be reduced by the driver if the driver experiences internal overheating as a protection to the LEDs and the electrical components. Output is protected from short circuits, voltage overload and current overload. Automatic recovery after correction. Standard built in driver surge protection of 2.5kV (min) with CDMG, driver is class 1.

#### Surge Protection

Surge protector tested in accordance with ANSI/IEEE C62.45 per ANSI/IEEE C62.41.2 Scenario I Category C High Exposure 0kV/10kA waveforms for Line Ground, Line Neutral and Neutral Ground, and in accordance with U.S. DOE (Department of Energy) MSSLC (Municipal Solid State Street Lighting Consortium) model specification for LED roadway luminaires electrical immunity requirements for High Test Level 10kV / 10kA. SP2 20kV/10kA optional.

#### Driver options

**DMG:** Dimmable driver 0-10V.

**CDMG:** Dynadimmer standard dimming functionalities including pre-programmed scenarios to suit many applications and needs from safety to maximum energy savings.

| Order Code | Dimming  |          |       |
|------------|----------|----------|-------|
|            | Scenario | Duration | Level |
| CDMGS25    | Safety   | 4 hours  | 25%   |
| CDMGS50    | Safety   | 4 hours  | 50%   |
| CDMGS75    | Safety   | 4 hours  | 75%   |
| CDMGM25    | Median   | 6 hours  | 25%   |
| CDMGM50    | Median   | 6 hours  | 50%   |
| CDMGM75    | Median   | 6 hours  | 75%   |
| CDMGE25    | Economy  | 8 hours  | 25%   |
| CDMGE50    | Economy  | 8 hours  | 50%   |
| CDMGE75    | Economy  | 8 hours  | 75%   |

**SRD:** Sensor Ready Driver including SR communication (used for dimming and other functionalities), 24V auxiliary supply and a logical signal input (LSI) connected to the top NEMA twist lock receptacle.

**SRD1:** Sensor Ready Driver including SR communication (used for dimming and other functionalities) but with 24V auxiliary supply and a logical signal input (LSI) not connected to the top NEMA twist lock.

### LED Performance

| Predicted lumen depreciation data <sup>1</sup> |               |   |  |                                    |
|--|---------------|---|--|------------------------------------|
| Ambient Temperature (°C)                       | Driver mA     | Calculated L <sub>70</sub> hours <sup>1,2</sup> | L <sub>70</sub> per TM-21 <sup>2,3</sup> | Lumen Maintenance % @ 60,000 hours |
| 25°C   | up to 2100 mA | >100,000  | >60,000                                  | 83%                                |

1. Predicted performance derived from LED manufacturer's data and engineering design estimates, based on IESNA LM-80 methodology. Actual experience may vary due to field application conditions.

2. L<sub>70</sub> is the predicted time when LED performance depreciates to 70% of initial lumen output.

3. Calculated per IESNA TM21-11. Published L<sub>70</sub> hours limited to 6 times actual LED test hours.

# AT50-C Ancestra LED Pendant

## Urban Luminaire

### Specifications (continued)

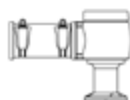
#### Luminaire adaptor



**MA1:** The luminaire is suspended by means of a mounting adaptor with a 1" (32mm) NPT threaded hole accepting a threaded tube from the mounting. Retrofit adaptor for existing mounting.

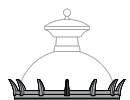


**MA2:** MA2: 1." (38mm) NPT threaded hole accepting threaded tube from the mounting. Retrofit adaptor for existing mounting.

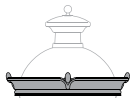


**SMB:** The luminaire is suspended by means of a decorative side-mounted cast aluminum adaptor. This adaptor accepts tubes from 1<sup>5</sup>/<sub>8</sub>" to 2<sup>3</sup>/<sub>8</sub>" (41 to 60 mm) and is adjustable to more or less 5°.

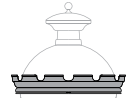
#### Luminaire options



**CR20**  
Decorative  
Crown



**CR30**  
Decorative  
Crown



**CR40**  
Decorative  
Crown



**DA**  
Decorative  
arches

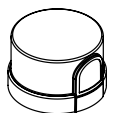


**DC**  
Decorative  
cap

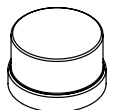


**GRD**  
Decorative  
guard

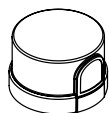
**PH7**  
Photoelectric cell,  
bottom type



**PH8**  
Photoelectric cell,  
twist-lock type.  
Allows 90° rotation



**PH9**  
Shorting cap,  
twist-lock type



**PHXL**  
Extended life Photoelectric  
cell, twist-lock type  
Allows 90° rotation



**RCD**  
Receptacle  
5-pins



**RCD7**  
Receptacle  
7-pins

**SP2**  
20kV/10kA integral  
surge protector (optional)

#### Fitter

Cast 356 aluminum c/w 4 set screws 3/8 16 UNC. This fitter holds 2 arms made of cast aluminum 356 mechanically assembled. Slip fits on a 4" (102mm) outside diameter X 4" (102mm) long tenon.

#### Finish

In accordance with the AAMA 2603 standard. Application of polyester powder coat paint (4 mils/100 microns) with +/- 1 mils/24 microns of tolerance. The Thermosetting resins provides a discoloration resistant finish in accordance with the ASTM D2244 standard, as well as luster retention in keeping with the ASTM D523 standard and humidity proof in accordance with the ASTM D2247 standard. The surface treatment achieves a minimum of 2000 hours for salt spray resistant finish in accordance with testing performed and per ASTM B117 standard.

#### Textured Finish Options:

**BE2TX:** Textured Midnight Blue  
**BE6TX:** Textured Ocean Blue  
**BE8TX:** Textured Royal Blue  
**BG2TX:** Textured Sandstone  
**BKTX:** Textured Black  
**BRTX:** Textured Bronze  
**GN4TX:** Textured Blue Green  
**GN6TX:** Textured Forest Green  
**GN8TX:** Textured Dark Forest Green  
**GNTX:** Textured Green  
**GY3TX:** Textured Medium Grey  
**RD2TX:** Textured Burgundy  
**RD4TX:** Textured Scarlet  
**WHTX:** Textured White

#### Non-Textured Finish Options:

**GR:** Gray Sandtex  
**NP:** Natural Aluminum  
**TG:** Hammer-tone Gold

#### Wiring

Gauge (#14) TEW/AWM 1015 or 1230 wires, 6" (152mm) minimum exceeding from luminaire.

#### Hardware

All exposed screws shall be complete with Ceramic primer-seal base coat to reduce seizing of the parts and offers a high resistance to corrosion. All seals and sealing devices are made and/or lined with EPDM and/or silicone and/or rubber.

#### Quality control

Manufactured to ISO 9001 2008 standards and ISO 14001-2004 International Quality Standards Certification.

#### LED products (manufacturing standard)

The electronic components sensitive to electrostatic discharge (ESD) such as light emitting diodes (LEDs) are assembled in compliance with IEC61340 5 1 and ANSI/ESD S20.20 standards so as to eliminate ESD events that could decrease the useful life of the product.

#### Quality control

Manufactured to ISO 9001 2008 standards and ISO 14001-2004 International Quality Standards Certification.

#### Certifications and Compliance

CSA, cULus Listed for Canada and USA. Luminaires are DesignLights Consortium qualified.

# AT50-C Ancestra LED Pendant

## Urban Luminaire

### Poles

