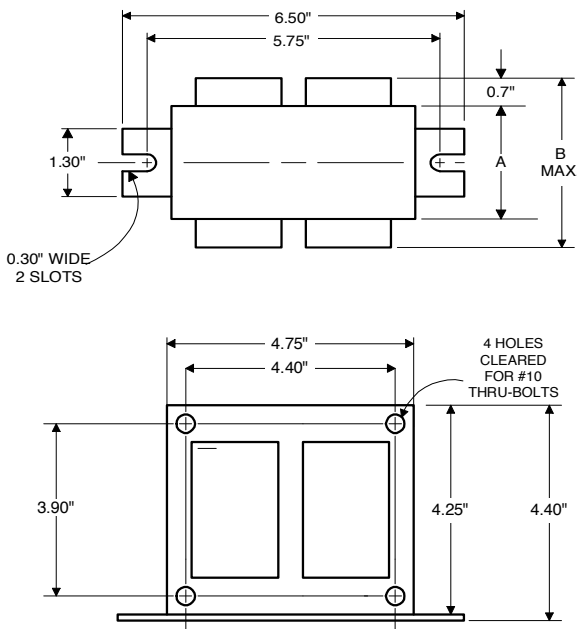


### Electrical Specifications at 120-277-347V

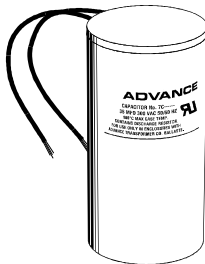
#### DIMENSIONS AND DATA

4 1/4 X 4 3/4 CORE - 2 COIL UNIT



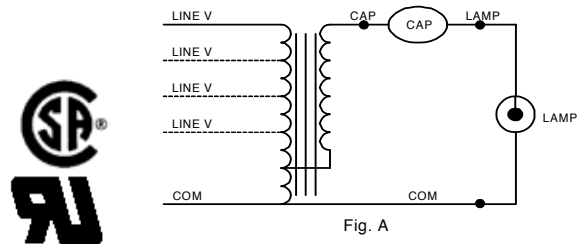
	120	277	347		
INPUT VOLTS					
CIRCUIT TYPE	CWA				
POWER FACTOR (min)	90%				
REGULATION					
Line Volts	±10%				
Lamp Watts	±10%				
LINE CURRENT (Amps)					
Operating.....	2.50	1.10	0.90		
Open Circuit.....	2.10	0.90	0.75		
Starting.....	2.20	1.00	0.80		
UL TEMPERATURE RATINGS					
Insulation Class	H(180°C)				
Coil Temperature Code	1029				
MIN. AMBIENT STARTING TEMP.	-20°F or -30°C				
NOM. OPEN CIRCUIT VOLTAGE	315				
INPUT VOLTAGE AT LAMP DROPOUT.....	60	138	174		
INPUT WATTS	295				
RECOMMENDED FUSE (Amps).....	8	3	3		
CORE and COIL					
Dimension (A)	1.64				
Dimension (B)	3.10				
Weight (lbs.)	10				
Lead Lengths	12"				
CAPACITOR REQUIREMENT					
Microfarads	15.0				
Volts (min.)	400				
Fault Current Withstand (amps)					
60 Hz TEST PROCEDURES (Refer to Advance Test Procedure for HID Ballasts - Form 1270)					
High Potential Test (Volts)					
1 minute	2000				
2 seconds	2500				
Open Circuit Voltage Test (Volts)	280-345				
Short-Circuit Current Test (Amps)					
Secondary Current	2.25-2.75				
Input Current.....	1.90-2.70	0.80-1.20	0.65-1.00	-	-

Capacitor: 7C150P40-R



Capacitance: 15  
Dia/Oval Dim: 1.75  
Height: 3.75  
Temp Rating: 105°C

Wiring Diagram:



Ordering Information

Order Suffix

Description

Ignitor:

NA

This ballast does not require the use of an ignitor.

Data is based upon tests performed by Advance Transformer in a controlled environment and representative of relative performance. Actual performance can vary depending on operating conditions. Specifications are subject to change without notice.

# Metal Halide 71A57A0

The information presented in this document is not intended as any commercial offer and does not form part of any quotation or contract.



© 2019 Signify Holding. All rights reserved. This document contains information relating to the product portfolio of Signify which information may be subject to change. No representation or warranty as to the accuracy or completeness of the information included herein is given and any liability for any action in reliance thereon is disclaimed. All trademarks are owned by Signify Holding or their respective owners.

Signify North America Corporation  
200 Franklin Square Drive,  
Somerset, NJ 08873  
Telephone 855-486-2216

Signify Canada Ltd.  
281 Hillmount Road,  
Markham, ON, Canada L6C 2S3  
Telephone 800-668-9008