

interact



A scalable, connected office suited to your needs

How you can keep up with the changing workplace

Find out more about Interact

<https://www.interact-lighting.com/en-au/what-is-possible/interact-office>

<https://www.interact-lighting.com/en-au>

Contents

- 04 The workplace is changing
- 05 Juggling your priorities
- 06 Connected lighting is the answer
- 07 Interact: a flexible, scalable, cost-effective system
- 08 A phased approach
- 09 Easy for managers, easy for employees
- 10 Interact benefits
- 11 Build the system you want



The workplace is changing

For many years now, our lives — and by extension, our jobs — have been becoming more digitised. A greater focus on mental and physical health has meant that employees expect to be supported and protected more than ever. Climate action is right at the top of the agenda too, putting employers under pressure to provide an environmentally friendly workspace. Add in the global pandemic and the almost overnight shift

to working from home and it's safe to say that the landscape has shifted dramatically.

The workplace as we know it is changing. Or rather, it's already changed — and you're in danger of being left behind if you don't make an effort to keep up.

Here are some of the trends we've been noticing:

Juggling your priorities

Your people

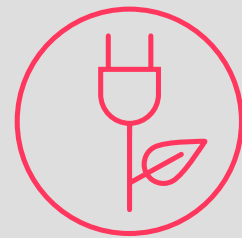
Nowadays, employees are more empowered; the employee-employer dynamic is a far more level playing field than in the past. Staff expect something in return for their hard work and commitment, namely a space where they feel safe and supported. The onus is on the employer to provide happy, relationship-centric environments that employees want to spend time in and that fit with the changing ideas of how work gets done. With an in-office/working from home hybrid model far more common, the employee experience must be seamless regardless of their location.

Time to make the tough decisions

Investing in the future of your business is all well and good, but you also have to manage your budget, keeping operating costs low to appease stakeholders. You'll also be expected to justify any investment, so you need to be equipped with the means to quantify the value of your decisions with reliable data. Becoming a smart, connected office is not as easy as flipping a switch. You'll likely have to adopt a phased approach, so you'll need a scalable system that supports that.

Your building

Your building is a valuable asset that can be made even more valuable by investing money into making it smart and IoT ready. Smart systems can improve operational efficiency, lower operating costs, optimise space usage, and transform workspaces into more responsive and comfortable places for employees. You can also take advantage of incentives for smart renovations and new technology that will make your buildings safer and more comfortable for your employees.



Sustainability

Large-scale climate action is ramping up with the introduction of initiatives such as the Energy Efficiency Council in Australia, EU Green Deal and America Is All In plan in the US. With the fight against climate change now being led from the front, you're under more pressure than ever to ensure you meet the standards set by your government — starting with your building. A staggering 75% of buildings are energy inefficient, so there's a long way to go to achieve the net-zero target by 2050.



Hybrid and flexible workspace

With the "normal" 9–5, in-office work routine seemingly a thing of the past, employers recognise that they need to be more flexible, fluid, and receptive to the needs of employees. For many, the successful shift to working from home has raised the question: Is there any need to go into the office? Many executives, however, argue that the office is crucial for fostering productivity. How will you provide a hybrid solution that suits all parties?



Health and well-being

During and post-pandemic, employees will be more health conscious than ever before. In fact, 73% of workers say they are more concerned about workplace healthiness than before. The challenge is not only convincing them that returning to the office is safe, but to maintain that feeling once they're back. It's up to you to support this shift and create spaces that feel safe and secure. A happy workforce equals a motivated workforce, and employees will be far more productive if their worries are addressed.



Connected lighting is the answer

As you can see, there's lots to think about; juggling your priorities with budget constraints and pressure from employees, stakeholders and government is no enviable task. Luckily, there's a simple solution that will help you satisfy all parties and create a smarter, safer and more sustainable office environment. And what if we said that you already have the foundations in place?

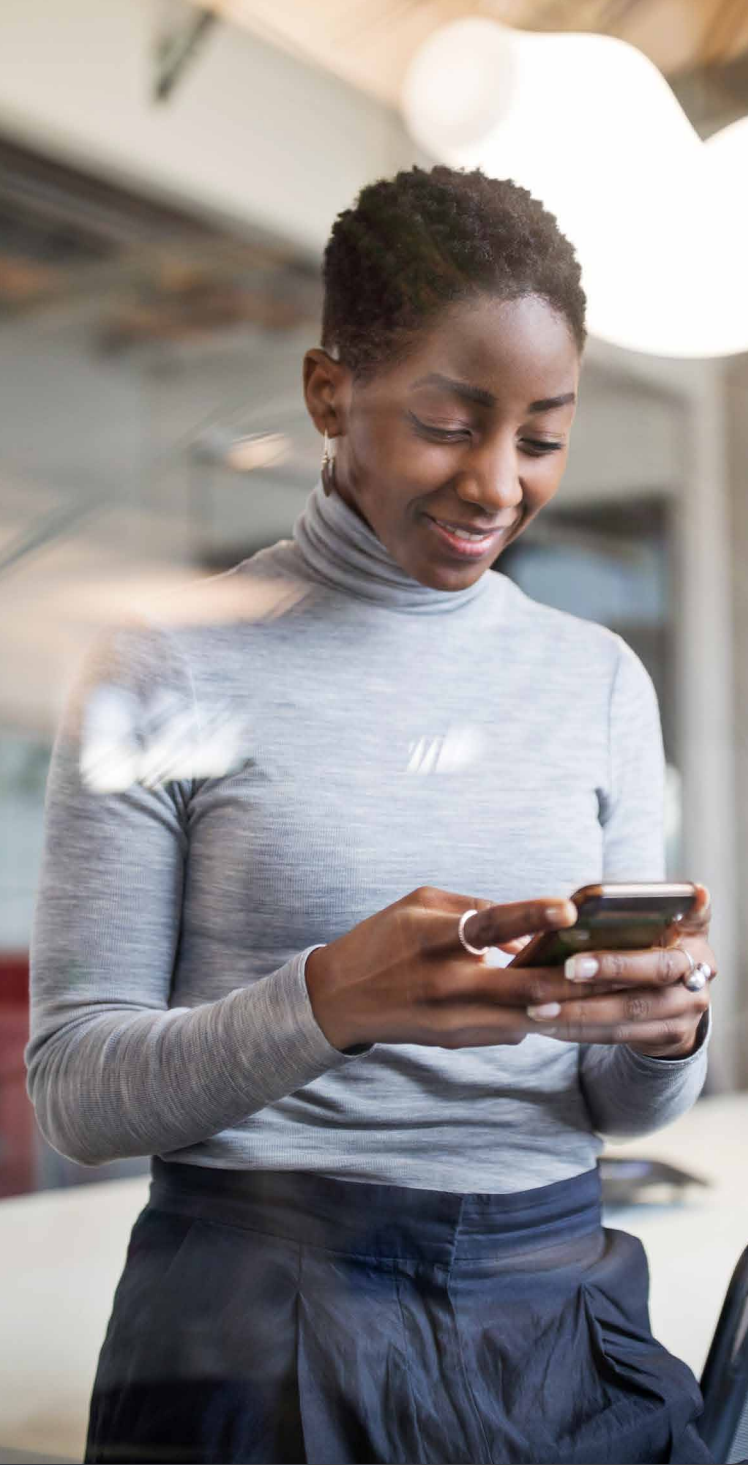
Your lighting is all around you. Or at least, it's everywhere that your people are. This gives you the opportunity to start creating a smart building ecosystem by simply utilising what you already have. If your lighting system can be connected and IoT-enabled, you have a platform by which you can distribute smart technology throughout a building. As a result, you'll have a workspace that saves you money, increases employee productivity and happiness, and helps your enterprise become sustainable.

Data is key

Connected lighting allows you to collect and analyse data that was never before available — or at least not readily available. Luminaires equipped with a variety of sensors are able to collect information on energy usage, space occupancy, light levels, temperature and humidity and so much more. This allows you to make informed, data-driven decisions for the benefit of your employees.

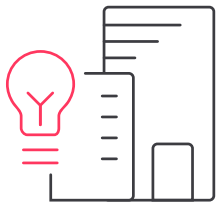
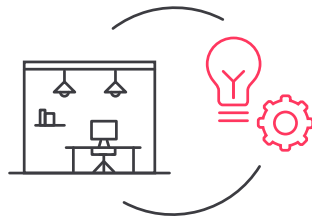
Luminaires equipped with a variety of sensors are able to collect information on energy usage, space occupancy, light levels, air quality and so much more.

This allows you to make informed, data-driven decisions for the benefit of your employees.



Interact: a flexible, scalable, cost-effective system

Interact connected lighting for the IoT data-enables your lighting infrastructure and connects with other smart systems in your building. It offers a flexible and cost-efficient system that meets your individual needs and is easy to understand and operate. And the best part? It's completely scalable — you can start off as big or as small as you like and grow as your budgets allow or as your business needs change.



Scale in size

You can install a limited number of Interact light points in a single site, then add more light points across multiple sites according to your plans and budget. There is no limit to the number of light points or locations you can manage and control with Interact. The more you do, the more you save—in energy, costs, and emissions.

Scale in application areas

Your lighting is not just in your open-plan office, it's on your building façade, in your parking areas and conference rooms. Interact can handle all of your lighting needs, but you may want to prioritise certain areas.

Scale in capability

The starting point of the Interact offering is the installation of connected LED lighting. This alone allows you to achieve savings of up to 80% on lighting-related energy usage, with the money saved covering the cost of installation within just three years. Once you have the foundations in place, you can bring data-enabled capabilities online at your own pace.

A phased approach

Because Interact is scalable, you can take a phased approach to connecting your office lighting. Interact delivers high-quality illumination and value beyond illumination using a combination of light, sensors, and connectivity.



Light

Interact lighting systems begin with connection-ready LED luminaires. You can enjoy all the benefits of high-quality energy-efficient LED lighting right from the start—even before you’ve turned on any of the system’s data-driven capabilities. Save big on energy consumption and maintenance costs, move toward your sustainability goals, and help make your employees comfortable and productive from Day 1.



Sensors

Connected luminaires from Philips can host a variety of sensors that collect data from the lit environment or from the lighting system itself. Data on system status and operations enable intelligent lighting management, while data about occupancy and activities in your illuminated spaces support IoT capabilities such as space optimisation, indoor wayfinding, and workspace personalisation.



Connectivity

Interact connects data, people, places, and light to create smart, responsive environments that enhance productivity, streamline operations, and make employees happier and more comfortable. The cloud-based Interact IoT platform stores collected data for analysis and insight, delivers seamless software and app updates, and ensures world-class cybersecurity. APIs and other development tools let you integrate Interact with other smart management systems in your building.

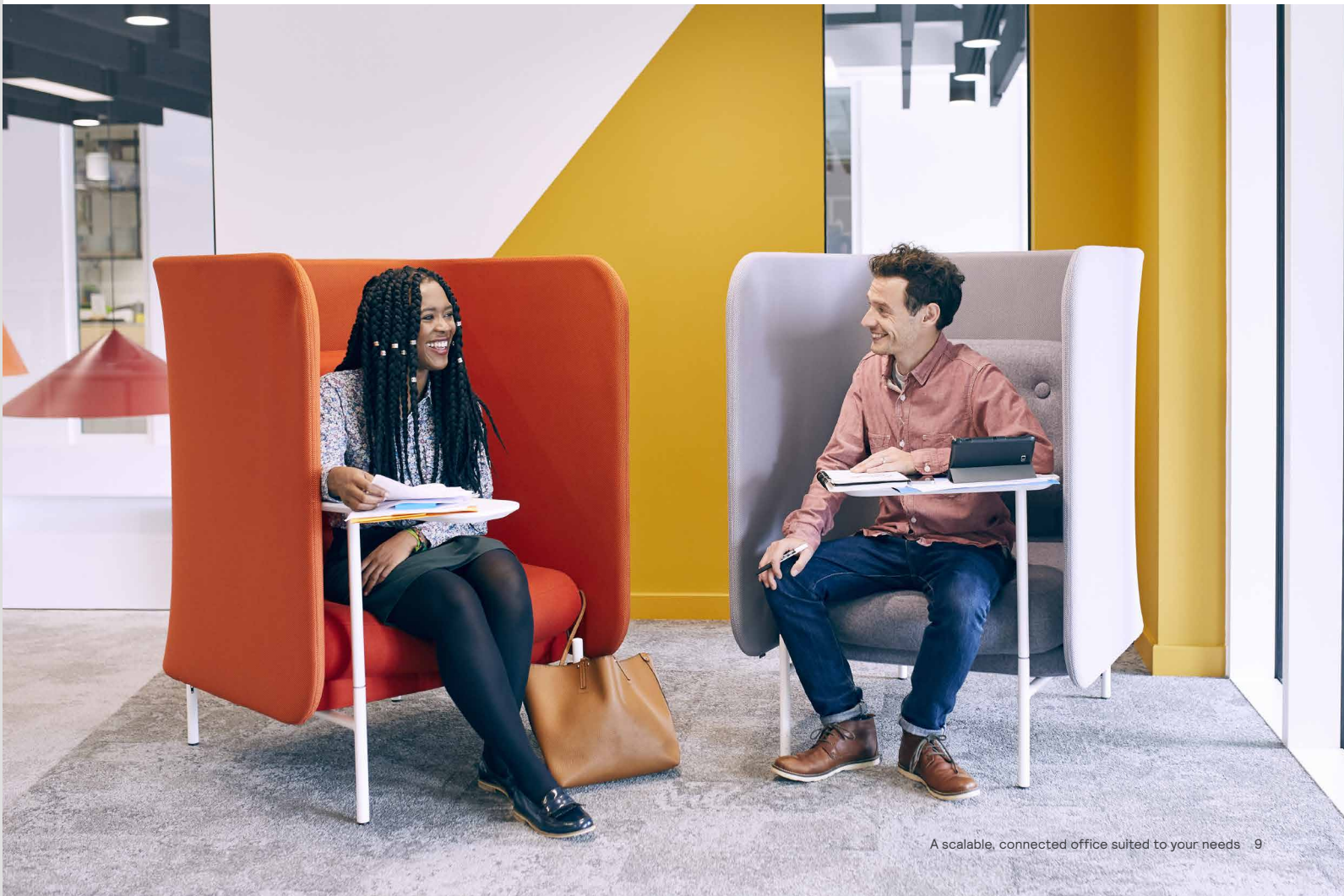
Easy for managers, easy for employees

Once Interact is installed and commissioned, facilities managers and others can remotely monitor and control all connected light points via a centralised dashboard. Light points appear on a floorplan of the space and can be managed individually, all together, or in any combination of groups or zones. Set dimming schedules, get data-rich automated notifications when system issues occur, and view heatmaps and other visualisations of space usage over time. Easy-to-use Interact smartphone apps allow employees to personalise the lighting over their workspaces, find colleagues and resources, book desks and conference rooms, and more.

Light as a Service

What could be easier than managing Interact connected lighting using the Interact dashboard and other system tools? Having Signify manage it for you! That’s where Light as a Service (LaaS) comes in.

With LaaS, you don’t need to make funds available to buy, install, and manage your new connected lighting system yourself. You simply pay a monthly fee and we take care of the rest — from design and installation to operation and maintenance. Think of it like a subscription service: instead of owning the lighting, you pay for the light.



With Interact, you can:



Group luminaires together



Receive real-time data via sensors in system



Take advantage of the Interact IoT platform in the cloud to serve software and ensure world-class cybersecurity



View dashboards for energy usage and other operational data—one site, multi-site



Provide workspace personalisation apps to employees



Use indoor location services for wayfinding, ensuring social distancing, resource finding, and more



Integrate Interact lighting with other services and systems (HVAC, scheduling, building automation, and so on)

Build the system you want

Interact is the perfect solution for helping you stay ahead of current office trends and create a healthy and happy working environment which is in sync with your employees' wants and needs. We make it easy to get started.

When you get in touch with our team, we'll ask questions and start to build a custom offering designed specifically to address your business objectives.

You'll get the system you want, where you want, and with all the IoT capabilities you feel will most benefit

your office and your workforce. We'll work with you on a phased approach that allows you to scale up your system as and when you require.

After that, we can take care of everything — from the design and financing to the installation, commissioning, and even the management of your system.

It all starts with a conversation, so contact us today.

interact
ready.

lighting available from

PHILIPS

				
Philips GreenPerform Batten	Philips GreenPerform UGR19 Panel	Philips GreenPerform PowerBalance	Philips GreenPerform Slim Panel	Philips GreenPerform Troffer
				
Philips GreenSpace G5 Downlight	Philips KeyLine Light Line	Philips Elite Panel	Philips FlexBlend Elite Troffer	Philips LuxSpace Luminaire
				
Philips PowerBalance Elite	Philips TrueLine Elite Light Line	Philips FlexBlend Elite		

Learn more about Interact

www.interact-lighting.com

© 2022 Signify Holding. All rights reserved. The information provided herein is subject to change, without notice. Signify does not give any representation or warranty as to the accuracy or completeness of the information included herein and shall not be liable for any action in reliance thereon. The information presented in this document is not intended as any commercial offer and does not form part of any quotation or contract, unless otherwise agreed by Signify.

All trademarks are owned by Signify Holding or their respective owners.

interact