

interact



The warehouse of the future

How connected lighting helps you
keep up with your competition

Find out more about Interact

<https://www.interact-lighting.com/en-au/what-is-possible/interact-industry>

<https://www.interact-lighting.com/en-au>

Contents

- 04 Your industry is changing
- 05 What's holding you back?
- 06 Connected lighting is the way forward
- 07 Interact: a flexible, scalable, cost-effective system
- 08 One step at a time
- 09 Light as a Service
- 10 Interact capabilities
- 11 Your system, your way



Your industry is changing

Like so many others, the industrial sector is going through a period of transition — a transformation that's only been accelerated by the pandemic. While most offices, schools and hospitality venues were closing their doors, warehouse facilities were busier than ever.

Now, there is a greater need for efficiency and productivity, especially since the steep rise in e-commerce has increased the demand on warehouses. Employees are rightly more concerned

about their safety at work and, of course, sustainability is always high on the agenda. And underpinning all of this is the arrival of the Fourth Industrial Revolution, in which digitalisation and the IoT are becoming more intertwined with everyday processes, particularly in the industrial environment where all needs to be done on site.

Your industry is changing, and it's changing quickly. You can keep up by making some simple, easy-to-implement changes — but first, let's explore some of the industry's key trends:

What's holding you back?

You know that the time for change and adaptation is coming — or rather, it's already here. You want to be a leader and a pioneer, not a company struggling to keep up with the competition. So, what's holding you back?

The systems

You understand the importance of connected systems and the IoT for how they might be able to benefit your organisation, but you may not have the proof points you need to guide your decision-making. Is a given system reliable? Are IoT applications easy to implement and operate? And what if something goes wrong? These are all valid concerns, but you can stay ahead of your competitors by getting your arms around the benefits of digitalisation and the IoT.

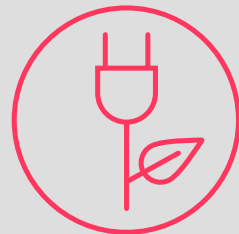
The costs

State-of-the-art technology is expensive, right? You're worried about investing in something that is unknown in terms of operation and return on investment. You're also competing with budget limitations — possibly tightened by the pandemic — and on top of all of that, you're expected to quantify the value of any business decision you make.

Time to make the tough decisions

You have to make hard business decisions and juggle the sometimes conflicting priorities of stakeholders and employees. Operating costs must be kept low, productivity kept high, and the responsibility is on you to prove it's all worth the investment. But becoming a smart, connected facility is not as easy as flipping a switch.

You need a multi-phase plan that is future-ready, allowing you to add the capabilities you need when you're ready for them. And you need a reliable and knowledgeable partner who can walk beside you and support you as you take the transformational journey.



Sustainability

Large-scale climate action is ramping up with the introduction of initiatives such as the Energy Efficiency Council in Australia, EU Green Deal and America Is All In plan in the US. What impact will this have on your operations? Facilities are under pressure to become smarter and more eco-friendly, with more than 80% of N100 companies worldwide now reporting on sustainability.



More productive facilities

Advancements in technology are digitalising industry at a rapid rate, changing the way companies work. High-speed business cycles put pressure on companies to accomplish quick turnarounds and improve operational efficiency, while the growth of AI, the IoT, robotics, and data analytics are further changing the landscape. One key concern for warehouse managers is the efficiency of order picking, with more than 60% believing that picking times take longer when stocking is not optimised. This is a perfect example of a process that can be improved with data collection and analysis.



Safety and well-being

Your operations need to be more people- and transaction-centric, and employees increasingly demand safe working environments that support their health and well-being. The National Safety Council in the US reported 869 fatal incidents and 290,000 non-fatal injuries in industrial facilities in 2019. Of those injuries, slips, trips, and falls rank as the second most common — a type of accident that can often be avoided with the proper lighting.



Connected lighting is the way forward

As you can see, there's lots to think about; juggling your priorities with budget constraints and pressure from employees, stakeholders and government is no enviable task. Luckily, there's a simple solution that will help you satisfy all parties and create a smarter, safer and more sustainable facility.

Lighting is all around you. Or at least, it's everywhere that your people are. This gives you the opportunity to start creating a smart building ecosystem by IoT-enabling a system that you must have in place anyway. A connected lighting system can serve as a platform that you can use to distribute smart technology throughout your facility. As a result, you'll have a workspace that embraces technology, increases employee safety, and helps your operations become sustainable.

Data is key

Connected lighting allows you to collect and analyse data that was never before available — or at least not readily available. Luminaires equipped with sensors can collect information on energy usage, space occupancy, light levels and so much more. This allows you to make informed, data-driven decisions that benefit both your operations and your employees.

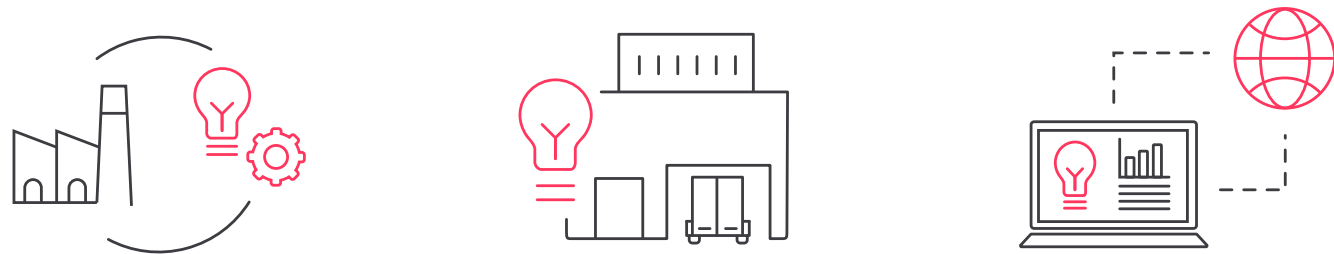
A connected lighting system can serve as a platform that you can use to distribute smart technology throughout your facility.

As a result, you'll have a workspace that embraces technology, increases employee safety, and helps your operations become sustainable.



Interact: a flexible, scalable, cost-effective system

Interact connected lighting for the IoT data-enables your lighting infrastructure and connects with other smart systems in your facility. It offers a flexible and cost-efficient system that meets your individual needs and is easy to understand and operate. And the best part? It's completely scalable — you can start off as big or as small as you like and grow as your budget allows or as your business needs change.



Scale in size

You can install a limited number of Interact light points in a single site, then add more light points across multiple sites according to your plans and budget. There is no limit to the number of light points or locations you can manage and control with Interact. The more you do, the more you save in energy, costs, and emissions.

Scale in application areas

Your lighting is not just in your main picking areas, it's in your loading zones, in your parking areas and storage rooms. Interact can handle all of your lighting needs, but you may want to prioritise certain areas.

Scale in capability

The starting point of the Interact offering is the installation of connected LED lighting. This alone allows you to achieve savings of up to 80% on lighting-related energy usage, with the money saved covering the cost of installation within just three years. Once you have the foundations in place, you can bring data-enabled capabilities online at your own pace.

One step at a time

Because Interact is scalable, you can take a phased approach to connecting your facility's lighting. Interact delivers high-quality illumination and value beyond illumination using a combination of light, sensors, and connectivity.



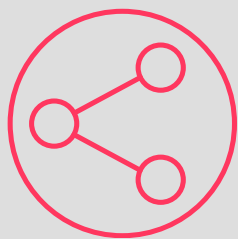
Light

Interact lighting systems begin with connection-ready LED luminaires. You can enjoy all the benefits of high-quality energy-efficient LED lighting right from the start — even before you've turned on any of the system's data-driven capabilities. Save big on energy consumption and maintenance costs, move toward your sustainability goals, and help make your employees safe and productive from day one.



Sensors

Connected luminaires from Philips can host a variety of sensors that collect data from the lit environment or from the lighting system itself. Data on system status and operations enable intelligent lighting management, while data about occupancy and activities in your illuminated spaces support IoT capabilities such as space optimisation.



Connectivity

Interact connects data, people, places, and light to create smart, responsive environments that enhance productivity, streamline operations, and make employees safer and happier. The cloud-based Interact IoT platform stores collected data for analysis and insight, delivers seamless software and app updates, and ensures world-class cybersecurity. APIs and other development tools let you integrate Interact with other smart management systems in your facility.



Light as a Service

What could be easier than managing Interact connected lighting using the Interact dashboard and other system tools? Having Signify manage it for you! That's where Light as a Service (LaaS) comes in.

With LaaS, you don't need to make funds available to buy, install, and manage your new connected lighting system yourself. You simply pay a periodic fee and we take care of the rest — from design and installation to operation and maintenance. Think of it like a subscription service: instead of owning the lighting, you pay for the light.

With Interact, you can:



Group luminaires together



Receive real-time data via sensors in the system



Take advantage of the Interact IoT platform in the cloud to serve software and ensure world-class cybersecurity



View dashboards for energy usage and other operational data — one site or multi-site



Provide workspace personalisation apps to employees for the office areas in your facility



Integrate Interact lighting with other services and systems (such as building automation systems)

Your system, your way

Interact is the perfect solution for helping you stay ahead of current industry trends and create a productive and safe working environment which is in sync with your employee’s wants and needs. And we make it easy to get started.

When you get in touch with our team, we'll ask questions and start to build a custom offering designed specifically to address your business objectives.

You'll get the system you want, where you want, and with all the IoT capabilities you feel will most

benefit your facility and your workforce. We'll work with you on a phased approach that allows you to scale up your system as and when you require.

After that, we can take care of everything — from the design and finance to the installation, commissioning, and even the management of your system.

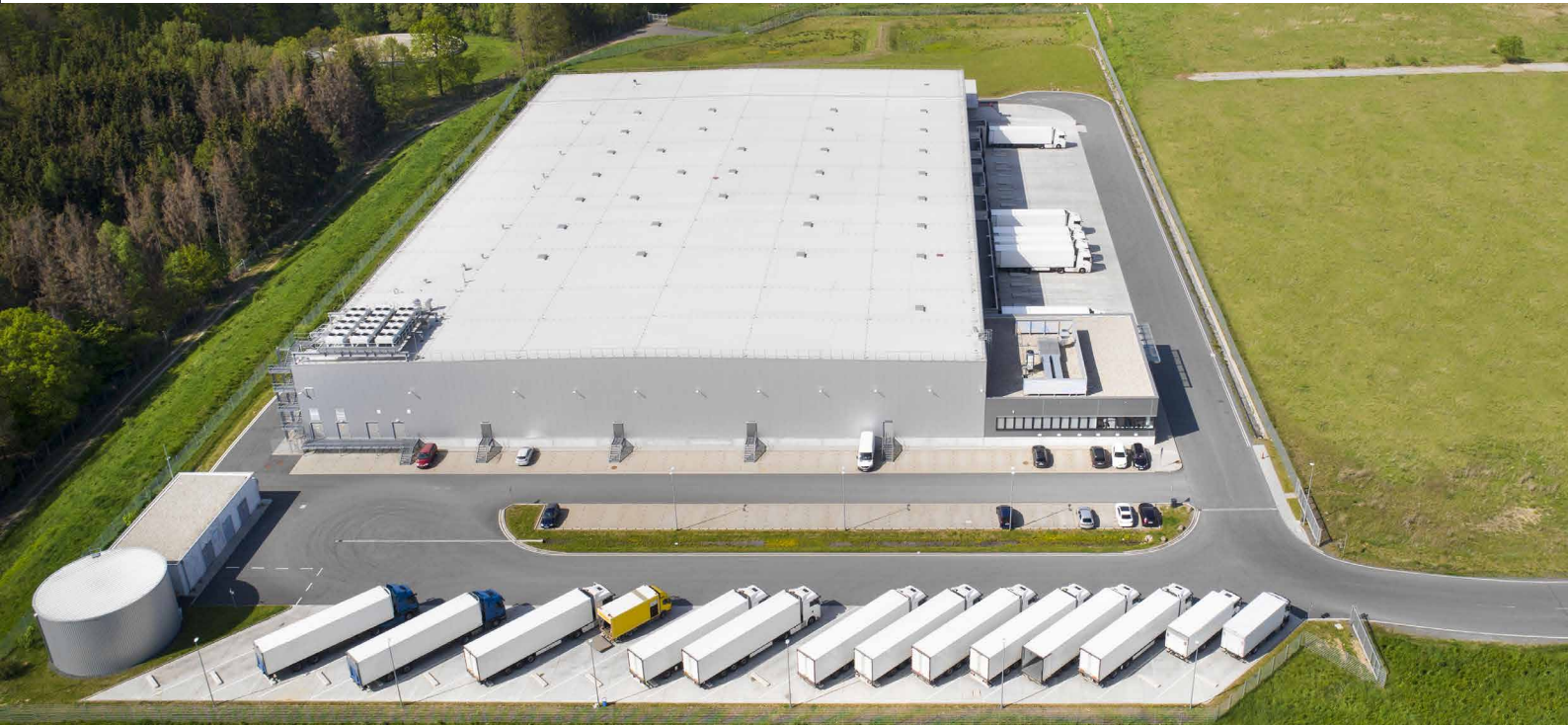
It all starts with a conversation, so contact us today.

interact
ready.

lighting available from

PHILIPS

				
Philips GreenPerform WP Batten	Philips GreenPerform Highbay	Philips Elite Highbay	Philips Elite Rectangular Highbay	Philips Pacific LED



Learn more about Interact

www.interact-lighting.com

© 2022 Signify Holding. All rights reserved. The information provided herein is subject to change, without notice. Signify does not give any representation or warranty as to the accuracy or completeness of the information included herein and shall not be liable for any action in reliance thereon. The information presented in this document is not intended as any commercial offer and does not form part of any quotation or contract, unless otherwise agreed by Signify.

All trademarks are owned by Signify Holding or their respective owners.

The logo for Interact, featuring the word "interact" in a lowercase, sans-serif font. The letters are a vibrant pink color. The 'i' and 'n' are connected, as are the 't' and 'a', and the 'c' and 't'. The 'e' and 'r' are also connected. The 'a' has a unique shape with a small gap in the middle.