



interact

Introducing Interact Pro scalable system – smart lighting for smart businesses

How can businesses benefit from smart lighting?

Smart lighting can create workplaces that are more comfortable, more secure and more productive, all while boosting energy savings and meeting sustainability targets.

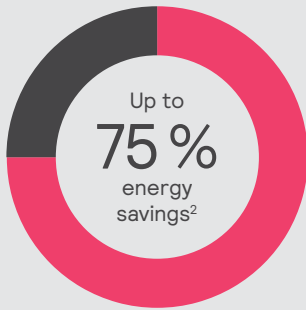
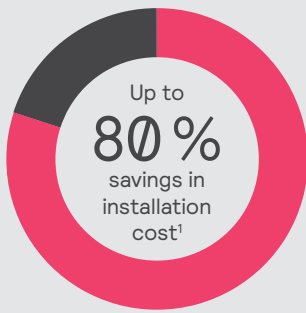
To make it easy for you to enjoy the benefits of smart lighting, we're introducing the new **Interact Pro scalable system**. It's a cost-efficient and wireless solution for every step of your customer's smart lighting journey. The system is fully scalable, so it can grow as business requirements grow – from smart to super-smart.

Wherever you work, it works

- Perfect solution for projects of all sizes and scope
- No restriction on light points – ideal for offices, industrial sites, warehouses, schools and many more areas of application
- Wide range of Interact Ready lamps and luminaires, smart sensors and switches to cover all application needs

Fully compliant with all standard regulations to claim utility rebates (ASHRAE, Title 24, IECC, UL924, DLC)



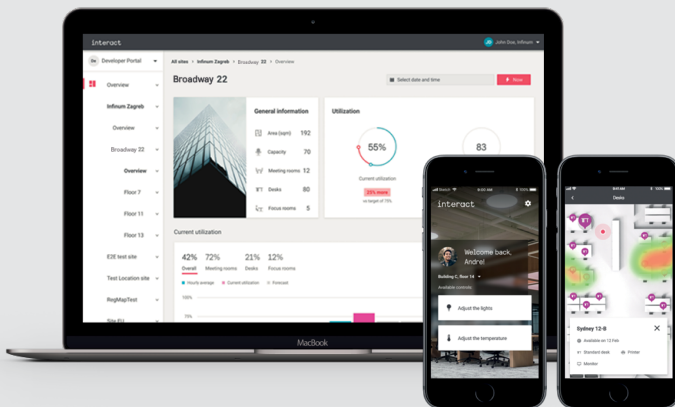


Step 1: Start simple and lay the foundation

- Smart lighting with luminaire integrated occupancy and daylight sensor
- Simply connect the Interact Ready luminaires, retrofit kits and lamps with the intuitive Interact Pro app through a Bluetooth connection.
- Add sensors, switches, 3rd party 0-10V or phase dimming luminaires.
- Set-up is simple and straightforward, just like SpaceWise: no need for additional wiring or access to the building's internet connection.
- Save up to 80 % on installation and material cost compared with more complex systems.¹
- Boost energy savings up to 75 % with the unique adaptive dimming and dwell time features.²

Step 2: Scale up for more benefits by adding a gateway

- Instant access to cloud-based benefits and functionality such as scheduling, remote access, adaptation and energy monitoring, light point information regarding lifetime and health, as well as regular feature updates.
- Integrate with utilities for Open ADR based demand response strategy
- As your system grows, you can keep and build on all previously installed light points.



Step 3: Tap the full potential of the IoT

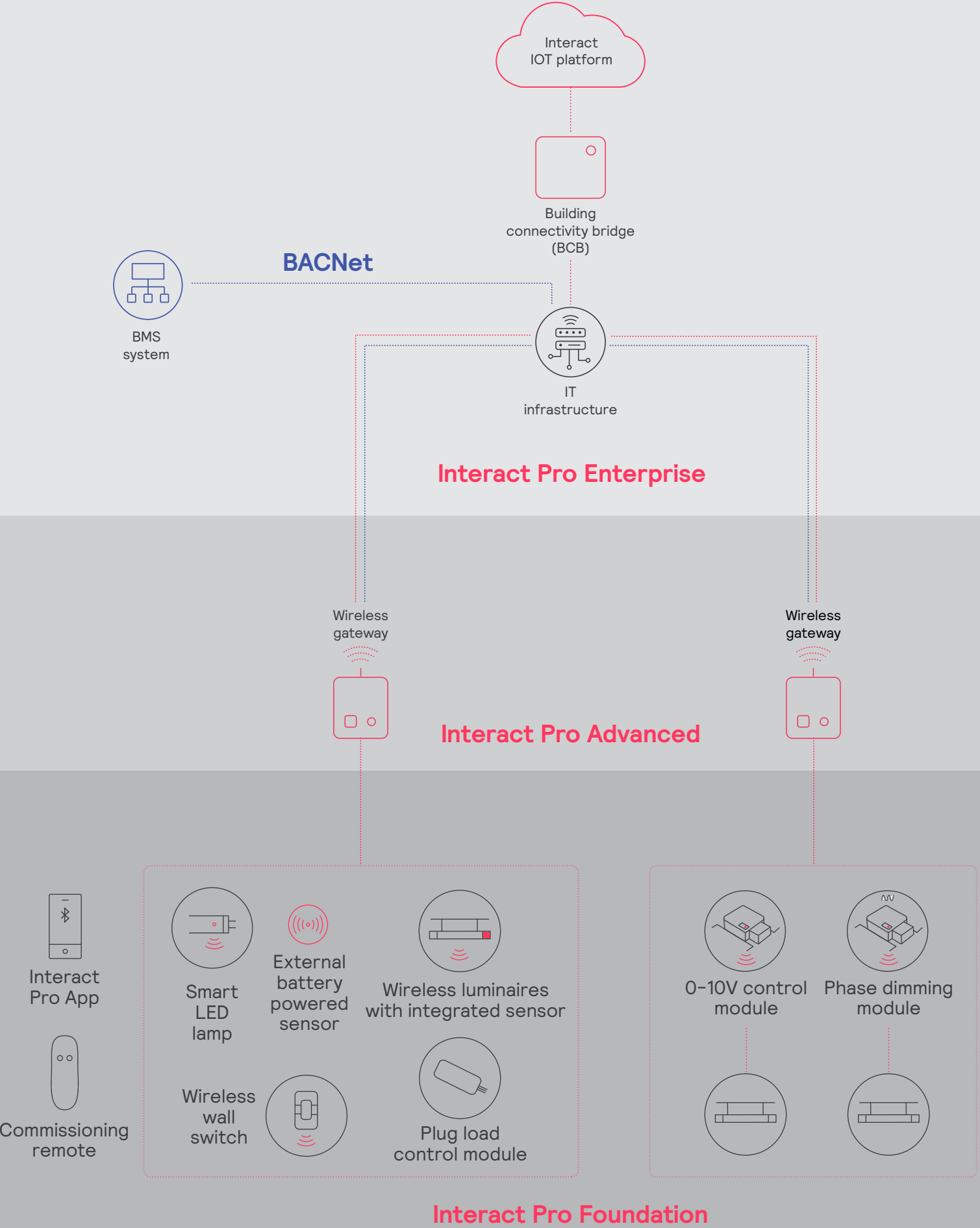
- Access to occupancy, asset health and environmental sensing data
- Optimize workspace quality, improve safety and productivity and boost employee engagement – even across multi-sites.
- Unlock more savings with BMS integration
- Minimize waste with real time way-finding and desk/room booking tools

Learn more about the benefits of Interact for SME at:
www.interact-lighting.com/interactproscalablesystem

¹ Compared to wired networked lighting control systems.

² Based on installation in the GSA-operated Metcalfe Federal Building located in Chicago, Illinois. This project was installed under the GSA Green Proving Ground Program. <https://www.assets.signify.com/is/content/Signify/Assets/philips-lighting/united-states/20201013-gpg-findings-integrated-with-alc.pdf>


Interact Pro scalable system architecture



Functionalities overview

		Foundation	Advanced	Enterprise
Meet building codes	Integrated occupancy and daylight sensing	✓	✓	✓
	Manual ON	✓	✓	✓
	Partial automatic ON	✓	✓	✓
	Multi-level continuous dimming	✓	✓	✓
	Automatic shut-off control	✓	✓	✓
	Automatic daylight responsive control	✓	✓	✓
	Dimming, daylight harvesting & occupancy controls	✓	✓	✓
	Automatic receptacle control (Plug load control)	✓	✓	✓
	UL924 Emergency	✓	✓	✓
	Automatic Demand Responsive controls (Open ADR)		✓	✓
Comply with DLC	Networking of luminaires and devices	✓	✓	✓
	Luminaire Level Lighting Control (LLLC, integrated)	✓	✓	✓
	High-end trim	✓	✓	✓
	Zoning	✓	✓	✓
	Individual addressability	✓	✓	✓
	Cybersecurity	✓	✓	✓
Maximize energy savings, rebates & comfort	Adaptive dimming (light when you need it, where you need it)	✓	✓	✓
	Dwell time	✓	✓	✓
	BlueTooth (BLE) connectivity (for commissioning only)	✓	✓	✓
	Scene control	✓	✓	✓
	Personal control for a single user	✓	✓	✓
	Energy reporting and export		✓	✓
	Scheduling		✓	✓
	Device monitoring/remote diagnostics		✓	✓
Beyond code	Multi-site management		✓	✓
	Floor plan visualization			✓
	Occupancy analytics (heatmaps)			✓
	BACnet integration			✓
	APIs (light control, occupancy, people count)			✓
	Physically swap/upgrade sensors			✓
IoT features	Room booking via App (e.g. meeting room reservation)			✓
	Interface for Outlook and Google calendar integration			✓
	Desk booking via App			✓
	People estimation (via SC1500 sensor, and people counting supported via external PointGrab sensor)			✓
	Temperature & humidity sensing (via SC1500 sensor)			✓
	Noise classification sensing (via SC1500 sensor)			✓
	Wayfinding via App			✓
	Indoor positioning SDK			✓
	IoT Apps: Kiosk App, Space Management App, Workspace App			✓

Building blocks and luminaires

Foundation devices									
	Interact-ready wireless luminaires	Commissioning device (IRT9015)	Wireless scene switches (SWS200)	Wireless dimmer switch 2B (UID8451/10)	Interact Pro app	0-10V or Phase control modules (SBAZ10-CS or SBAELS-CS)	Plug load control module (RFSR10)	UL924 shunt module (ER100/00)	
Optional devices for Advanced						* Can be deployed with smart lamps in Foundation and Enterprise setups			
	Wireless gateway (LCN 1840/05)	Wireless gateway for demand response (LCN1870/05)	Battery powered wireless IP42 sensor*	Interact Pro portal	Wireless IP65 occupancy and daylight sensor (LCN3120/05)*				
Optional devices for Enterprise									
	Wireless gateway (LCN 1850/05)	BCB (LCN 1860/05)	Interact web software application	Space management and Workspace mobile apps					
Ledalite luminaires									
	ArcForm	BoldPlay	FloatPlane	Sona	SilkSpace				
									
	TruGroove recessed	TruGroove suspended	TruGroove recessed micro	EyeLine	ModiFly				
Day-Brite luminaires									
	FormFlex	ClearAppeal	SofTrace LED	DualLED	EvoGrid	FluxGrid			
									
	FluxPanel	SlimLux	FluxStream strip & wrap	FluxStream industrial	LBX suspended	FBY, FBX, HBY high bays			
Lightolier luminaires									
	Calculite gen 3	LyteProfile	EasyLyte	Commercial retrofit downlight					
Philips retrofit kits and lamps				Any 0-10V and phase dimming luminaires					
	EvoKit Click	EvoKit gen 5	MasterConnect LED PAR and TLED			Track lighting	Decorative lighting		

Currently supported maximum system size

To be able to design the lighting system correctly for the customer, it is important to know the prime characteristics of the system, its possibilities and limitations.

System level	
Total number of gateways	Unlimited
Total number of devices	200 per network
• luminaires with integrated sensors	150
• smart TLEDs	150
Total number of ZGP devices (sensors and switches)	50
• sensors	30
• switches	50
• zones and groups	64
Group level	
Number of lights	40 (recommended 25)
Number of ZGP devices	5
Number of scenes	16