



interact

Where simplicity meets scalability

Scalable, wireless, outside

Extend your smart lighting to parking areas

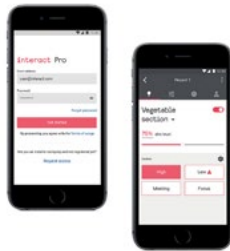
Interact is a cost-efficient wireless solution for every step of your smart lighting journey.

Interact enabled smart lighting creates a more comfortable experience, while boosting energy savings to meet sustainability targets.

The system is scalable, ensuring it will meet your needs now and in the future.

Features

- No additional wiring required during installation.
- Motion, daylight sensing and grouping can be done right out of the box.
- A gateway can be added at any time for additional features, such as scheduling and remote management.
- Set up is simple and can be done from your smart phone.
- Interact delivers a consistent experience between indoor and outdoor lighting control.
- Interact is the only system that offers wireless connectivity and control for lamps, luminaries, and retrofit kits.



Start simple and lay the foundation

- Smart lighting with luminaire integrated occupancy and daylight sensor.
- Save up to **80%** on installation and material cost compared with more complex systems.¹

1. Compared to wired networked lighting control systems.

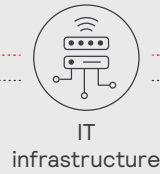
Scale up for more benefits by adding a gateway

- Boost energy savings up to **85%**.
- Get access to a software dashboard.
- As your system grows, you can keep and build on all previously installed light points.



How it comes together

Gateway + IoT



Wireless gateway

Wireless gateway

Gateway



Standalone



Interact Pro app



Commissioning remote



Wireless switch relay controller
(plug load, relay, dimming)



Luminaires with wireless integrated sensor



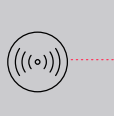
0-10V control module



Wireless repeater and controller for exterior applications



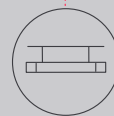
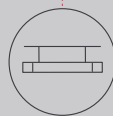
Wireless wall switch



External battery powered sensor



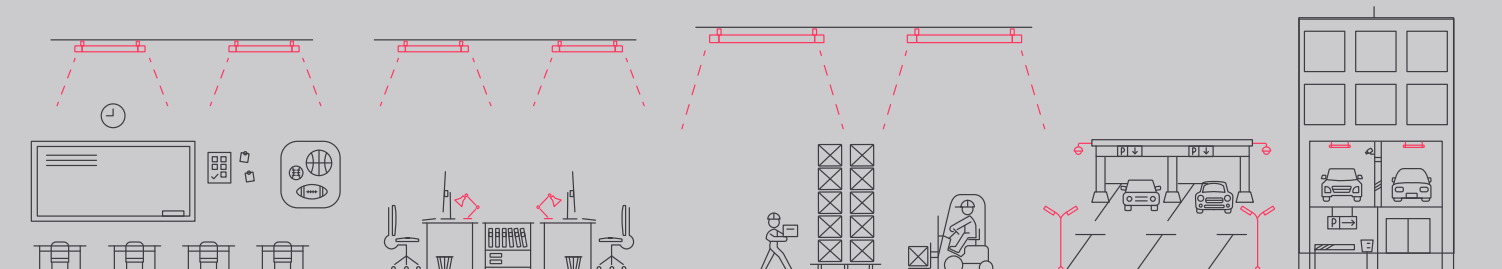
Smart LED lamp



Site & area luminaire with sensor



Parking garage luminaire with sensor



Outdoor luminaire compatibility



SoftView parking garage



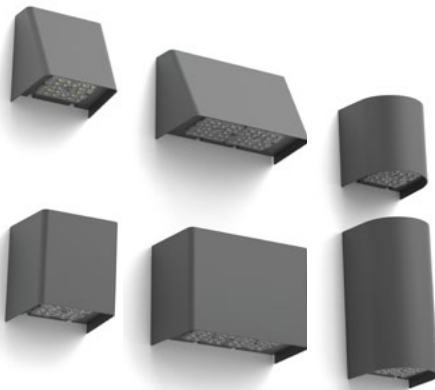
EcoForm site and area
(coming soon)



OptiForm site and area
(coming soon)



PureForm site and area
(coming soon)



GeoForm wall mount
(coming soon)



121 wall mount
(coming soon)



PureForm wall mount
(coming soon)

👉 **Questions about Interact? Contact us directly.**

<https://www.interact-lighting.com/en-us/get-in-touch> or
General inquiries: 1-833-468-7776, Field support: 1-800-555-0050 (Monday – Friday, 8am – 8pm EST)

© 2022 Signify Holding. All rights reserved. The information provided herein is subject to change, without notice. Signify does not give any representation or warranty as to the accuracy or completeness of the information included herein and shall not be liable for any action in reliance thereon. The information presented in this document is not intended as any commercial offer and does not form part of any quotation or contract, unless otherwise agreed by Signify.

interact