



Explore your mounting potential

We don't simply manufacture poles and brackets, we design and build them in-house, to offer you a variety of styles and options, with high quality standards, and we have been doing this for decades, always leading the way.

Manufacturing

A constant commitment

We strive for the highest manufacturing quality standards because we know that it is precisely this level of quality that allows our poles and brackets to withstand the test of time, and to provide dependable lighting for the ages.

Capabilities and certifications at a glance:

- In-house structural engineers
- ASHTOO certified pole assemblies
- CSA Certified Poles
- UL certified Poles & Luminaires
- ISO 9001 & ISO 14001
- Canadian Welding Bureau

Finishing

A premium protection

Whatever project you design, lighting solutions should not be chosen solely on the basis of illumination characteristics. A positive first impression is crucial, which is why the finish quality is so important.

Lumec's continuous improvement program has led to the development of an outstanding thermosetting powder coating process for exterior applications. This process enhances resistance to ultraviolet rays, salt spray corrosion and extreme weather conditions.

Paint would be nothing without a proper surface treatment. Lumec's immersion process deposits a Zirconium-based nanotechnology layer that protects steel and aluminum products against corrosion and promotes paint adhesion.



Lumital surface treatment

The preparation of aluminum and steel surfaces requires a 7-step treatment process.

No matter which project you design, lighting fixtures should not be chosen solely on the basis of their illumination characteristics. A positive first impression is crucial, which is why the quality of the finish is so important. Lumeç's ongoing product improvement program has led to the development of a complete surface finish system for exterior applications: the Lumital process.

The Lumital finish consists of a specially formulated thermosetting polyester resin-based powder coating that integrates hardening agents, pigments and modifying agents. The finish can be smooth, textured, Sandtex or metallic. The finish is applied to a well-prepared surface, utilizing our state-of-the-art surface treatment and finishing system. Our products meet both the ASTM B117 and ASTM D2247-68 standards.

The Lumital finish has enhanced resistance to ultraviolet rays, salt spray corrosion and extreme weather conditions.

- 1. Alkaline cleaner:** Each part is submerged in an alkaline solution to rid surfaces (inside and out) of grease and impurities.
- 2. Clear water rinse:** After a hot wash cycle, the parts are submerged and rinsed to eliminate any remaining trace of the cleaner.
- 3. Sulfuric Acid:** The parts are submerged in a sulfuric acid solution for etching. This serves two purposes: it eliminates rust (inside & out) and provides surfaces with the required coarseness for adhesion of the zirconium treatment to the polyester powder coat.
- 4. Clear water rinse:** After the etching cycle, the parts are submerged and rinsed to eliminate any remaining trace of citric acid.
- 5. Zirconium solution:** The parts are pre-treated and sealed in a zirconium solution. The applied chemicals react with the paint film, creating a continuous barrier between paint and the metal substrate, thus providing superior corrosion-protection and adhesive. The self-healing feature of this layer will prevent corrosion, should the surface finish be damaged.
- 6. Clear water rinse:** After the pre-treatment, the parts are submerged and rinsed.
- 7. Electrostatic finish:** A polyester powder coat is applied electrostatically. The powder finish includes thermosetting polyester resin, which provides a highly durable finish that is resistant to UV rays and corrosion in accordance with the ASTM-B117 and ASTM-D2247-68 standards.

Note: A rigorous analysis is performed daily on each chemical to ensure optimal performance of the pre-treatment process. The immersion treatment allows us to achieve excellent performance on external and internal surfaces as well, giving a protection to the inside of the poles, even if inside painting is not required.

Lumeç poles & brackets warranty information*

Aluminum	Steel	Special Conditions		
5 years	3 years	Custom finishes: 1 year warranty (unless noted)	Anodized finishes: Are not warranted with regard to finish consistency and color uniformity due to the inherent nature of the anodizing process.	Buy American: For Poles & Brackets coded with the "BAC" suffix, consult factory for warranty details.

* Poles & Brackets not manufactured by Signify will reflect the warranty of the original manufacturer (typically 1 year). Consult with factory on specifics and for products intended to be installed in coastal conditions (within 5km/3mi from seashore).

Our quality finishing techniques provide premium protection for poles and brackets

Available in Textured and Smooth finishes



WHTX
White



GY3TX
Medium Grey



BKTX
Black



BE8TX
Royal Blue



BE6TX
Ocean Blue



BE2TX
Midnight Blue



BG2TX
Sandstone



RD4TX
Scarlet



RD2TX
Burgundy



GNTX
Green



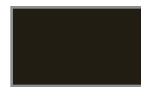
GN4TX
Blue Green



GN6TX
Forest Green



GN8TX
Dark Forest Green



BRTX
Bronze

Textured only



TS
Hammertone Silver



TG
Hammertone Gold



NP
Natural Aluminum

Smooth only

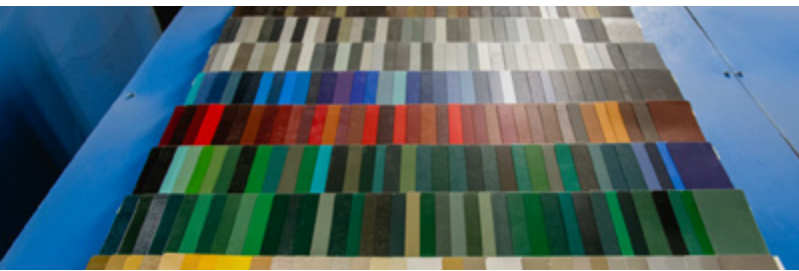
Colors and finishes to suit your every need

These colors are available in smooth finishes (to order remove TX from code). Due to the porous nature of castings, a smooth finish may present minor imperfections. Textured finishes conceal pores and provide a more uniform finish.

Special colors

SCL Special Color (liquid)
SCP Special Color (powder)

It is now possible to order smaller quantities of powder paint for a premium. Your representative can advise you if a powder coat paint can be developed for your project.



Custom colors

We support custom color options to the ultimate in color matching opportunities with your site lighting needs.

Learn more...

Contact your Signify Sales Representative today for a product demo.
Visit us at www.lumec.com to learn more about what our poles have to offer.
For more on Signify warranties please visit us at www.signify.com/warranties



© 2023 Signify Holding. All rights reserved. The information provided herein is subject to change, without notice. Signify does not give any representation or warranty as to the accuracy or completeness of the information included herein and shall not be liable for any action in reliance thereon. The information presented in this document is not intended as any commercial offer and does not form part of any quotation or contract, unless otherwise agreed by Signify.

Signify North America Corporation
400 Crossing Blvd, Suite 600
Bridgewater, NJ 08807
Telephone: 800-555-0050

Signify Canada Ltd.
281 Hillmount Road,
Markham, ON, Canada L6C 2S3
Telephone: 800-668-9008

All trademarks are owned by Signify Holding or their respective owners.