



**PHILIPS**

FlexBlend Elite



Smart



Scalable



Sustainable

**interact** ready.

# Future ready your business with **smart office lighting**



# Explore the benefits of FlexBlend



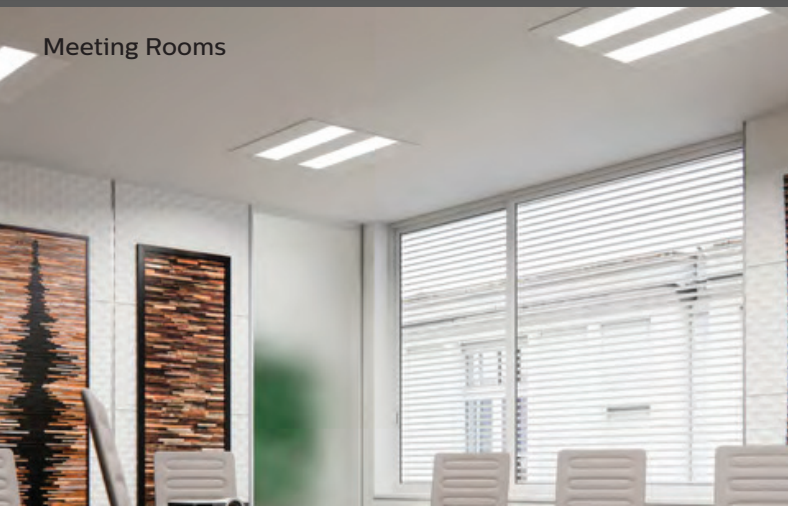
Today, next to efficiency and good payback, it's also important to ensure ceilings remain decluttered and lighting needs to offer both flexibility and compliance with norms and regulations. Offering real value for money, FlexBlend luminaires tick all these boxes.

## Why choose FlexBlend?

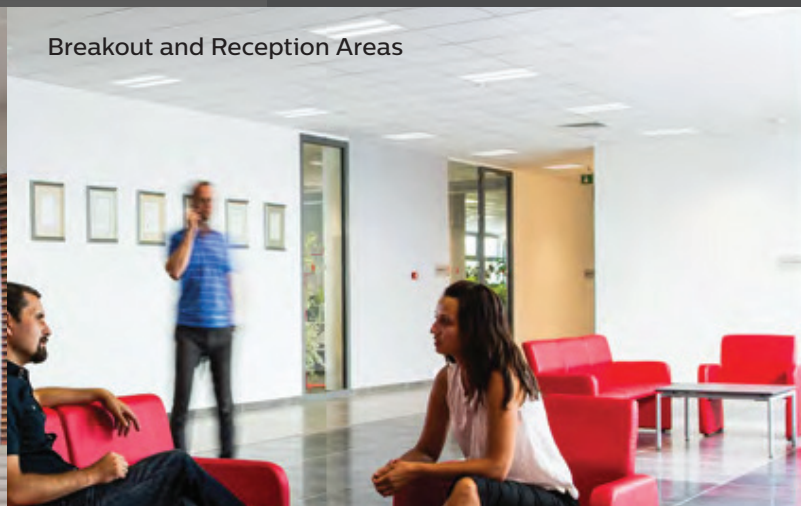
- ✓ **Office-compliant lighting**  
High-quality office-compliant lighting: Office Compliant Optics UGR <19. Minimised flickering and strobe light effects and increase visual comfort in the workplace.
- ✓ **Application flexibility**  
The FlexBlend luminaire fits into every office area, from reception and corridors to open plan offices and meeting rooms. It is available in square and rectangular forms. Suitable for recessed, surface or suspended applications.
- ✓ **Adaptability in design**  
This gives the possibility to install the luminaires easily in the field, at any moment. Even when today's luminaire is suspended, tomorrow this can be adapted to a surface mounted installation at the venue. And the other way around.
- ✓ **Fast return on investment**  
By combining the benefits of good efficiency (up to 144 lm/W), reliability and long service time, ease of installation and maintenance, FlexBlend offers a great return on your investment.
- ✓ **Easy connection to IoT**  
You can get much more out of your lighting when it's connected to IoT. FlexBlend is ready to be connected to Philips SpaceWise and even more advanced connected lighting systems such as Interact Office.

- Up to 144lm/W Efficacy
- L75 @ 100,000hrs  
• L80 @ 70,000hrs  
• L85 @ 50,000hrs
- Dali/Interact Ready System Ready
- CRI 90 / R9 >50
- Surface / Suspended & Recessed mount
- Standalone or continuous line

Meeting Rooms



Breakout and Reception Areas







# Different optical concepts to cover different needs

When it comes to designing office luminaires, we have one over-riding objective: the luminaires must deliver lighting of the highest possible quality.

For us, quality lighting means lighting that is fully compliant with all office norms and that delivers a comfortable working experience for office employees. Offering three optic concepts, FlexBlend luminaires deliver an above-standard quality of light for primary and secondary office areas.



Office-compliant **Polycarbonate Textured Structure (PCS)** optic has a distinctive bright line exit window appearance. With UGR <19 it meets the application requirements for all the primary office areas such as cell office, meeting room and open place office. Efficacy: lm/W up to 144.

Office-compliant **Micro Lens Optics (MLO)** has a soft sparkle exit window appearance and an outstanding look and feel. Micro Lens Optics due to their smooth light output and excellent quality of light are suitable for the most demanding application areas of every office. Efficacy: lm/W up to 105.

Non office-compliant **Opal (O)** optic has a soft gradient exit window appearance. With UGR <25 it fits in every secondary office area, such as corridors, reception and circulation areas. Efficacy: lm/W up to 125.



FlexBlend surface  
mounted & FlexBlend  
suspended

# Full Application flexibility

FlexBlend is offered in both linear and as standalone, using the same lighting module. This gives the option to the users to use FlexBlend as standalone now, and tomorrow as lines.



Surface mounted stand alone



Surface mounted lines



Suspended stand alone



Suspended lines

Corridor and Circulation Areas





FlexBlend recessed

# Full Application flexibility

Are you looking for a square or rectangular luminaire for your workplace? Would you like to be able to use the same luminaire model in different rooms with different ceiling types? FlexBlend provides the required flexibility by being easy applied on different ceiling types as well as in different office spaces like open office or meeting rooms.



Square version



Rectangular version



Visible profile ceiling version (VPC)



Concealed profile ceiling version (CPC)



Plaster ceiling version (PCV)

## Applications

**FlexBlend is intended to be used in office buildings, covering more areas.**

Working areas, where office compliancy is the key requirement

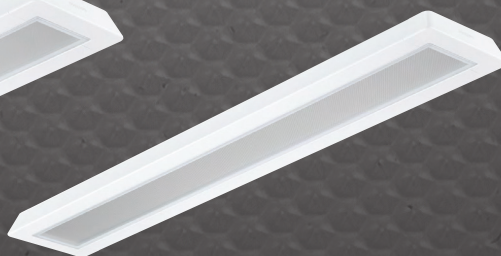
- Cell office
- Meeting rooms
- Offices with exposed ceilings
- Open space

Non-Working areas, where the lighting design must fit in the building design

- Reception area
- Corridors
- Circulation area



FlexBlend Suspended



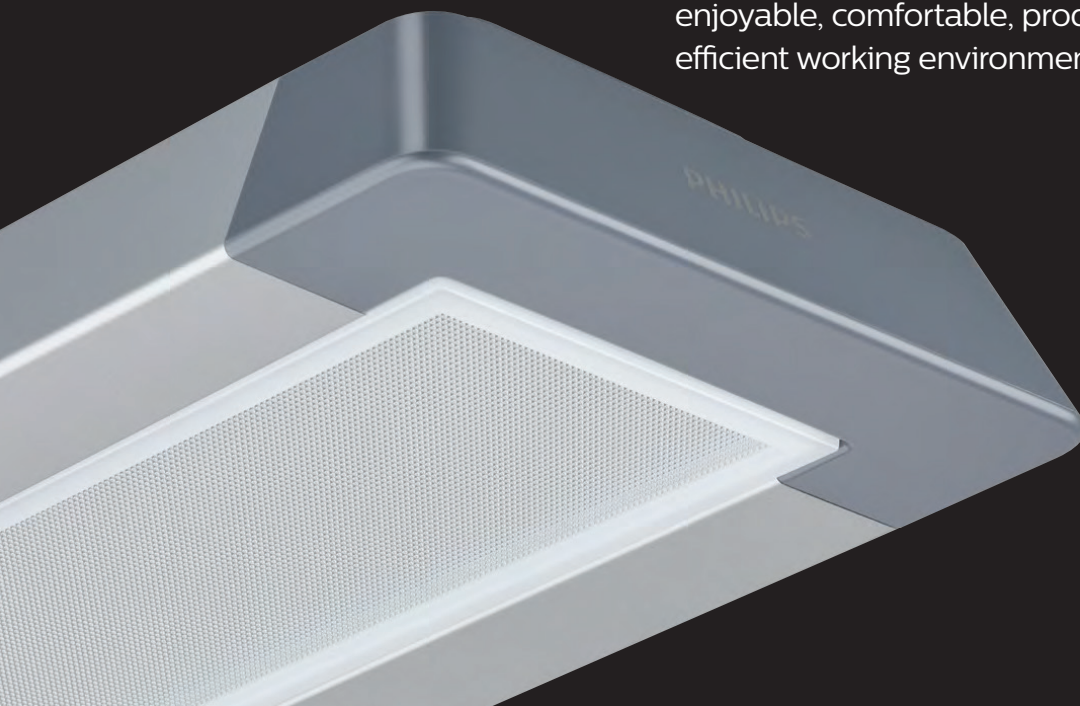
FlexBlend Surface Mounted



FlexBlend Recessed

# What to consider when selecting office lighting

In some respects, office lighting is working optimally when it's not noticed. This is when it provides consistent, high quality illumination of the office without causing discomfort or any annoying or undesirable effects. Here are some aspects of office lighting that ensure a healthy, enjoyable, comfortable, productive and even cost-efficient working environment.



## **Constant Light Output through lifetime**

Like all light sources, LED depreciates over time. When power is constant, luminaires will deliver less light at the end of their lifetime than at the start. Constant Light Output involves dimming the light at the start (and using less power) and over time increasing the power to correct for the depreciation. The result is that over the full lifetime of the LED luminaire, its light output will remain constant.

## **Eliminating all types of glare**

The unwanted effects of overly bright light sources on desks, screens or working areas are all too commonly experienced. Office-compliant lighting is required to eliminate direct and indirect glare; elimination of overhead glare is more of a recommended feature.

## **Reducing flicker and stroboscopic effects**

Flicker and stroboscopic effects are associated with a rapidly fluctuating light source. They may lead to undesired effects for office workers such as annoyance, fatigue, headache or reduced performance. By helping you select the right equipment and components to reduce current fluctuations, we can ensure that flicker and stroboscopic effects are kept within acceptable limits.





# Control Options

**Dali** A reliable Dali Driver is supplied standard with the Flexblend luminaires to provide stable lumen output and light quality that lighting specifiers and architects demand. The dimming range is between 1-100% and the driver interfaces with DALI and Touch & Dim control systems.

**Lighting control made easy with Dynalite** The Philips Dynalite control platform benefits from 30 years of experience in delivering superior lighting control solutions. Dynalite manages all DALI luminaires, Tunable White recipes to create better environments, and occupancy strategies to maximise the efficiency of workspaces. This takes place seamlessly through multiple control components and the distributed intelligence defining relationships within the system architecture. Reporting and monitoring of the network via Dynalite System Manager software not only provides insights into the operation but also DALI reporting – giving the client the necessary tools to effectively manage the intelligent building.

**Get more out of your Luminaire with SpaceWise** Controllable wireless lighting gives you the flexibility to set the right lighting level for each specific area within your office space, while also allowing workers to personalise their own settings, thereby enhancing their well-being and comfort. You can achieve all these goals while making significant savings. Philips SpaceWise gives you all the flexibility you need and installation is easy. There is no need for expensive and complicated rewiring. Integrated sensors in every luminaire allows for full occupancy sensing and daylight harvesting. The ZigBee Drivers will communicate with all other luminaires wirelessly. Programming and Zoning is achieved via a remote control.

Turn your **working** environment into a **smart office**

**interact**  
**Office**

Connected lighting can deliver up to 80% energy savings and streamlines operations through integration with other building systems. It can enable insights into building usage, to facilitate data-driven decisions. It can also allow employees to personalize the lighting to improve comfort, which ultimately can increase productivity. FlexBlend supports different control and system options, and is also Interact Ready, which means it is compatible with Interact Office software applications.

# Specifications

MODEL	Suspended & Surface							
SP340P & SP341P Suspended (Direct) & SM340C & SM342C Surface								
Type	LED21	LED28	LED36	LED42	LED26	LED35	LED45	LED52
Power (PSD)	16W	20W	26W	32W	20W	25W	32W	39W
System Lumens	2100lm	2800lm	3600lm	4200lm	2600lm	3500lm	4500lm	5200lm
System Efficacy	131lm/W	140lm/W	138lm/W	131lm/W	130lm/W	140lm/W	140lm/W	133lm/W

SP342P & SP343P Suspended (Direct-Indirect)									
Type	LED28	LED36	LED48	LED52	LED35	LED45	LED60	LED66	LED70
Power (PSD)	20W	26W	36W	39W	26W	32W	46W	49W	52W
System Lumens	2100/700lm	2800/800lm	3600/1200lm	4000/1200lm	2600/900lm	3500/1000lm	4500/1500lm	5000/1600lm	5200/1800lm
System Efficacy	140lm/W	138lm/W	133lm/W	133lm/W	133lm/W	140lm/W	130lm/W	134lm/W	134lm/W
Size*	1200mm				1470mm				

MODEL	Recessed		
Model	RC340		
Type	LED28	LED36	LED42
System Lumens	2800lm	3600lm	4200lm
Power (PSD) OPAL	24W	31W	36W
PCS	21W	27W	32W
MLO	30W	39W	48W
System Efficacy average	112lm/W	112lm/W	108lm/W
Size *	VPC ( Visible Profile Ceiling ) 597mmx597mm, 1197mmx297mm,1197mmx147mm		

(PCV) Plaster Ceiling options available on request

GENERAL	
Colour Temperature	3000K & 4000K
Mounting (suspended & surface )	Stand-alone & Continuous Line , Suspended option supplied with 1.5M drop wires and ceiling connection box
Input Voltage	220-240V
Electrical Class	I
Driver Type	CLO PSD-Dali /System Ready
Driver Lifetime	100,000hrs
Electrical Connection	1.5m 5core pre-wired flex for Suspended option only, PIP ( Push-In Connection) for Surface Mount and Recessed
Lumen Maintanance	100,000hrs L75,70,000hrs L80, 50,000hrs L85 ( based on TM21 calculation)
SDCM	3
CRI	CRI90( R9 is equal to or greater than 50
IP Rating	IP20
UGR Rating	UGR19
Material	Steel Frame, Micro Prisim front lens
Finish	White ( RAL 9003) , Silver ( RAL 9006) , Black RAL 9004)
Warranty	5 Years

## Flicker free

Philips Office Elite Products utilise industry best LED drivers that deliver flicker<sup>1</sup>free performance and no stroboscopic effect<sup>2</sup>.

<sup>1</sup> Additionally the Dali standard specifies 8 bit (256 discrete light levels) that can introduce the appearance of Flicker during transitions (dynamic dimming). Dimming performance is improved with Elite Luminaires by the addition of further bits totalling 32,000 (15bit). These interpolated dimming levels protect against flicker artefacts during light level transitions.

<sup>2</sup> In the absence of compulsory standards Philips Lighting opted to use the accepted test methods according to IEC TR 61547-1 [1] (Flicker) and IEC TR 61547-1 [5] (Stroboscopic Effect) with the following limits: PstLM ≤ 0.5 and SVM ≤ 1.



# FlexBlend recessed

**Lumen package:**

2800/3600/4200 lm

**Efficacy and optics:**

- Office-compliant PCS up to 144 lm/W
- Office-compliant MLO up to 105 lm/W
- Non Office-compliant O up to 126 lm/W

**Color rendering & color temperature:**

- 930 and 940
- Saturated Red (R9) >50

**Housing height:**

- Max 65-110mm  
(depends on size and connector)

**Lumen maintenance:**

- L75 @ 100,000hrs  
(based on TM21 Calculation)

**Archetypes:**

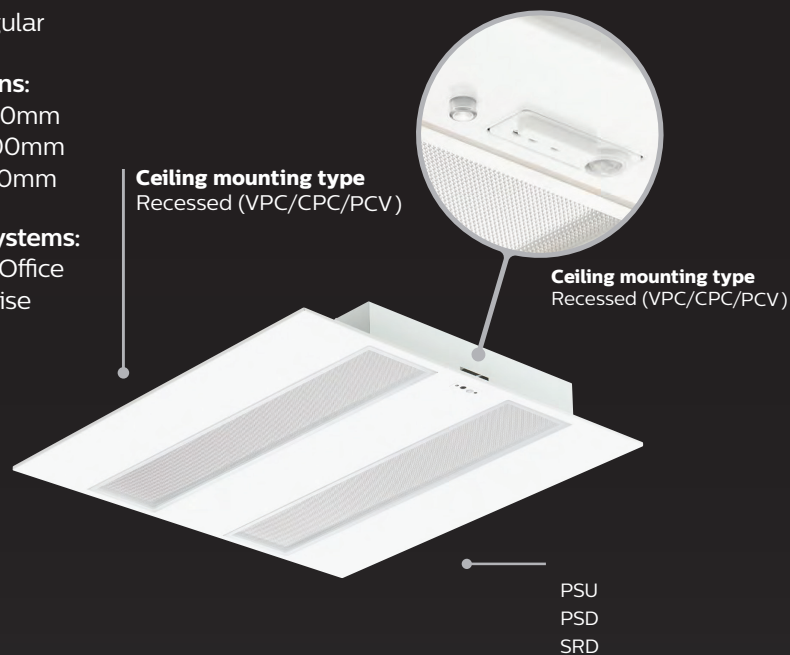
- Square
- Rectangular

**Dimensions:**

- 600x600mm
- 300x1200mm
- 150x1200mm

**Control systems:**

- Interact Office
- SpaceWise
- LiFi



# FlexBlend surface mounted

**Lumen package:**

- For 1.2m variant:  
2100/ 2800/ 3600/ 4000/ 4200 lm
- For 1.5m variant:  
2600/ 3500/ 4500/ 5000/ 5200 lm

**Efficacy and optics:**

- Office-compliant PCS up to 140 lm/W
- Office-compliant MLO up to 105 lm/W
- Non Office-compliant O up to 126 lm/W

**Color rendering & color temperature:**

- 930 and 940
- Saturated Red (R9) >50

**Housing height:**

- 73mm

**Lumen maintenance:**

- L75 @ 100,000hrs  
(based on TM21 Calculation)

**Dimensions:**

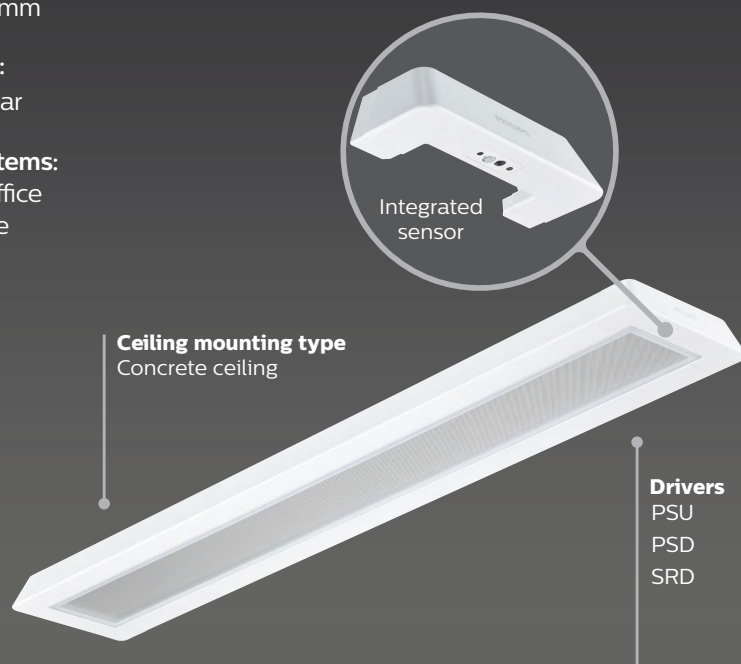
- 200X1200mm
- 200X1470mm

**Archetypes:**

- Rectangular

**Control systems:**

- Interact Office
- SpaceWise



# FlexBlend suspended

## Lumen package:

- For 1.2m variant Direct light:  
2100/ 2800/ 3600/ 4000/ 4200 lm
- For 1.5m variant Direct light:  
2600/ 3500/ 4500/ 5000/ 5200 lm
- For 1.2m variant Direct/ Indirect light:  
2800/ 3600/ 4800/ 5200/ 5600 lm
- For 1.5m variant Direct/ Indirect light:  
3500/ 4500/ 6000/ 6600/ 7000 lm

## Efficacy and optics:

- Office-compliant PCS up to 140 lm/W
- Office-compliant MLO up to 105 lm/W
- Non Office-compliant O up to 126 lm/W

## Color rendering & color temperature:

- 930 and 940 Saturated Red (R9) >50

## Housing height:

- 73mm

## Lumen maintenance:

- L75 @ 100,000hrs  
(based on TM21 Calculation)

## Dimensions:

- 200X1200mm
- 200X1470mm

## Archetypes:

- Rectangular

## Control systems:

- Interact Office
- SpaceWise



# Designation of Coding

## Surface & Suspended

Example of Code:

SP340P 21S/940 PSD MLO SMT L120 WH

	SP34XP	21	940	PSD	PCS	SWZU	SMT	L120	WH
	Model	Flux (LED)	Colour Temp	Driver	Optic	Embedded Controls	Suspension Set	Length	Housing Colour
Recessed	Direct (SP340P) Standalone Suspended (SP341P) Line Suspended (SM340C) Standalone Surface (SM324C) Line Surface	2100 (21S)	3000 (930) 4000 (940)	PSU PSD (Dali) SRD	MLO/PCS/OPAL	SWZU (Spacewise) IAO (Interact)	SMT N/A for Surface	L120 (1200mm)	WH ( RAL9003) BK ( RAL9004) SI ( RAL9006)
		2800 (28S)			MLO/PCS/OPAL			L150 (1500mm)	
		3600 (36S)			MLO/PCS/OPAL			L120 (1200mm)	
		4200 (42S)			MLO/PCS/OPAL			L150 (1500mm)	
	Direct/Indirect (SP342P) Standalone Suspended (SP343P) Line Suspended	2600 (26S)	3000 (930) 4000 (940)	PSU PSD (Dali) SRD	MLO/PCS/OPAL	SWZU (Spacewise) IAO (Interact)	SMT N/A for Surface	L120 (1200mm)	WH ( RAL9003) BK ( RAL9004) SI ( RAL9006)
		3500 (35S)							
		4500 (45S)							
		5200 (52S)							
		3500 (35S)							
		4500 (45S)							
	6000(60S)	3000 (930) 4000 (940)	PSU PSD (Dali) SRD	MLO/PCS/OPAL	SWZU (Spacewise) IAO (Interact)	SMT N/A for Surface	L120 (1200mm)	WH ( RAL9003) BK ( RAL9004) SI ( RAL9006)	
	6600 (66S)								
	7000(70S)								

## Recessed

<b>Example of Code:</b> RC340B LED36S/940 SRD W60L60 VPC MLO SWZ									
	RC340B	36	940	PSD	W60L60	VPC	MLO	SWZ	
Model	Flux (LED)	Colour Temp	Driver	Dimension ***	Ceiling Type	Optic	Electical Connection	Embedded Controls	
(RC340B) Recessed	2800 (28S)	3000 (930) 4000 (940) 4200 (42S) **	PSU PSD (Dali) SRD	W60L60	VPC (Visable Profile Ceiling)	MLO/PCS/OPAL	PIP (Push-In Terminals)	SWZU (Spacewise)  IAO (Interact)	
	3600 (36S)			W30L120	CPC (Concealed Profile Ceiling)				
	4000 (40S) *			W15L120	PCV (Plaster Ceiling Variant)				
	4200 (42S) **								

\* for MLO Optic  
 \*\* for PCS & O Optic  
 \*\*\* Other Dimensions available



© 2020 Signify Holding. All rights reserved. Signify reserves the right to make changes in specifications and/or to discontinue any product at any time without notice or obligation and will not be liable for any consequences resulting from the use of this publication. Application images shown may not reflect actual products advertised.

Version: February 2021

**Signify New Zealand Limited**

Level 3, 123 Carlton Gore Road  
Newmarket, Auckland 1023  
New Zealand  
T: 0800 454 448 / 0800 4 LIGHT

[lighting.philips.co.nz](http://lighting.philips.co.nz)

**Signify Australia Limited**

65 Epping Road, North Ryde  
NSW 2113  
Australia  
T: 1300 304 404

[philips.com.au/lighting](http://philips.com.au/lighting)