



PHILIPS

Elite Panel



Smart



Scalable

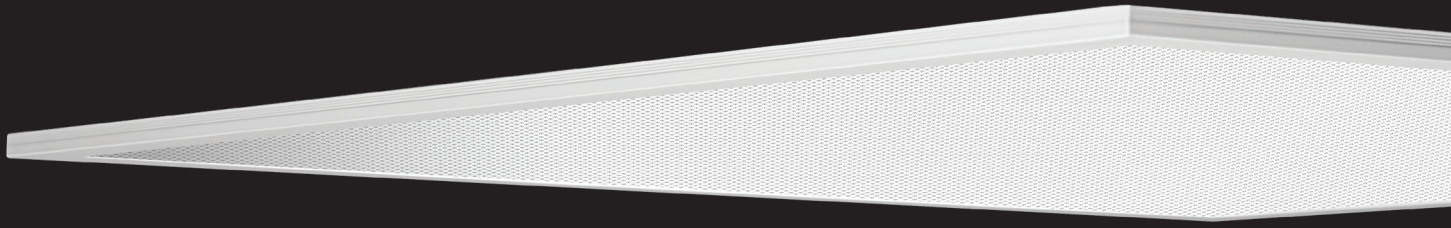


Sustainable

interact ready.

Future ready your
business with **smart**
office lighting

Professionals **count** on the **new Philips Elite Panel**



The Elite range is a comprehensive range of office compliant luminaires that meets the needs of today's strict office requirements.


CRI90, SDCM3 are standard with the Elite Panel and support designing for health and well-being as defined by the WELL Building Standard.

Lighting controls play an important part in providing complete office lighting solutions. Signify is able to offer Dali, 2 channel Tunable White, Interact Office in both wired and wireless solutions, and the user friendly SpaceWise 'standalone' wireless system. More details on Page 4.

- ✓ High quality CRI 90 / $R9 \geq 50$ LED chips with SDCM 3 specification ensure the best colour quality and minimal colour shift
- ✓ Comes standard with Dali drivers that have an adjustable drive current by means of dip-switches allowing for easy on site changes to lumen output if required
- ✓ Multiple choices of control interfaces are available to make lighting control simple
- ✓ The high IP44 rating allows for higher maintenance factors to be used in designs which leads to fewer luminaires being used in projects
- ✓ Three colour temperature options are available to enhance the working environment

 • 100lm/W efficacy

 • 85,000hrs at L80

 • Dali
• Interact Ready
• Spacewise
• Tunable White

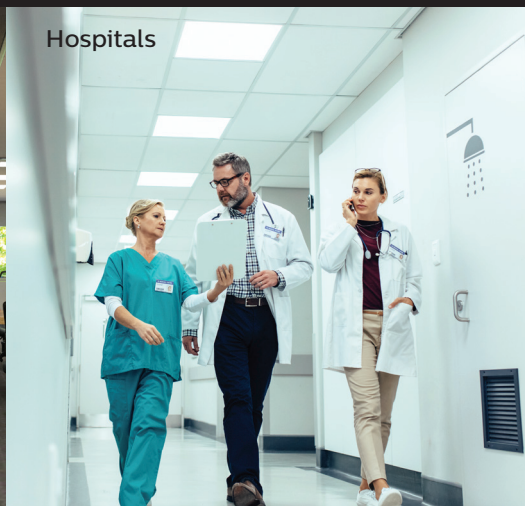
 • IP44

 • CRI 90 / $R9 \geq 50$

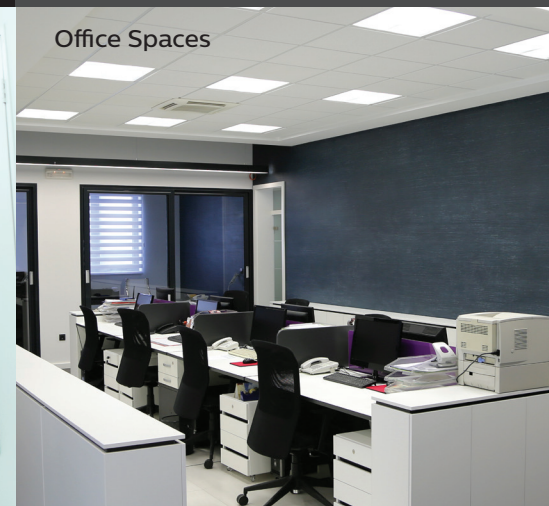
Foyers & Circulation Areas



Hospitals



Office Spaces



Specifications

MODEL	ELITE PANEL (RC190X)					
Type	LED36	LED34	LED32	LED27	LED25	LED23
Power (PSD)	36W	36W	36W	28W	28W	28W
System Lumens	3600/**4000	3450/**3800	3150/**3600	2700lm	2500	2350
System Efficacy	100lm/W	95lm/W	90lm/W	95lm/W	90lm/W	85lm/W
Colour Temperature	4000K	3500K	3000K	4000K	3500K	3000K
Size (mm)	1200 x 600, 1200 x 300, 600 x 600			600 x 300		
Mounting	Recessed					
Input Voltage	220-240V					
Electrical Class	II					
Driver Type	PSD-Dali Adjustable/System Ready/*Tunable White Dali 209					
Driver Lifetime	100,000hrs nominal					
Electrical Connection	1.5m pre-wired flex & plug (CAU) with plug in Driver					
Lumen Maintenance	85,000hrs @ L80 (based on TM21 calculation)					
SDCM	3					
CRI	CRI 90 / R9 ≥ 50					
IP Rating	IP44/ IP20 for Interact Office and SpaceWise					
UGR Rating	UGR19***					
Material	Micro Prism front lens					
Finish	White (RAL 9003)					
Warranty	5 Years					

*Tunable White Available in Q2 2020. **Lumen output for 1200x600 size. ***Exception of 6x3 (UGR 22)

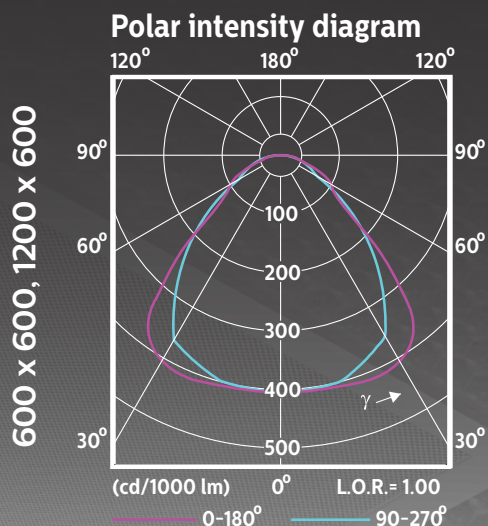
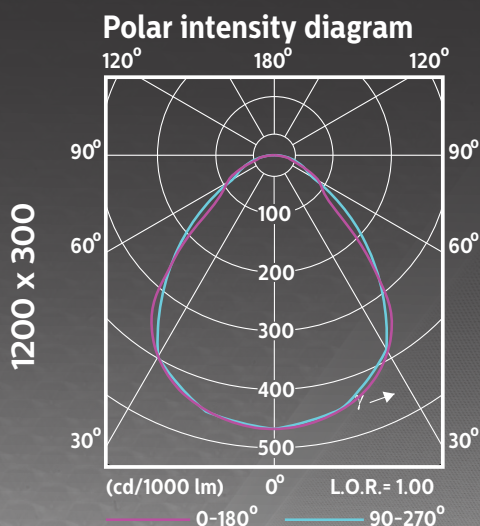
Flicker free

Philips Office Elite Products utilise industry best LED drivers that deliver flicker¹ free performance and no stroboscopic effect².

¹ Additionally the Dali standard specifies 8 bit (256 discrete light levels) that can introduce the appearance of Flicker during transitions (dynamic dimming). Dimming performance is improved with Elite Luminaires by the addition of further bits totalling 32,000 (15bit). These interpolated dimming levels protect against flicker artefacts during light level transitions.

² In the absence of compulsory standards Philips Lighting opted to use the accepted test methods according to IEC TR 61547-1 [1] (Flicker) and IEC TR 61547-1 [5] (Stroboscopic Effect) with the following limits: PstLM \leq 0.5 and SVM \leq 1.

Polar intensity





Control Options

Dali A basic constant current Dali Driver is supplied standard with the Elite Panel . The output current can be adjusted between 150mA and 850mA via a DIP switch which allows for on-site adjustability if required. The dimming range is between 1-100% and the nominal life is 100,000 hrs, the driver interfaces with DALI and SwitchDim (with memory function).

Lighting control made easy with Dynalite The Philips Dynalite control platform benefits from 30 years of experience in delivering superior lighting control solutions. Dynalite manages all DALI luminaires, Tunable White recipes to create better environments, and occupancy strategies to maximise the efficiency of workspaces. This takes place seamlessly through multiple control components and the distributed intelligence defining relationships within the system architecture. Reporting and monitoring of the network via Dynalite System Manager software not only provides insights into the operation but also DALI reporting – giving the client the necessary tools to effectively manage the intelligent building.

Get more out of your Luminaire with SpaceWise Controllable wireless lighting gives you the flexibility to set the right lighting level for each specific area within your office space, while also allowing workers to personalise their own settings, thereby enhancing their well-being and comfort. You can achieve all these goals while making significant savings. Philips SpaceWise gives you all the flexibility you need and installation is easy. There is no need for expensive and complicated rewiring. Integrated sensors in every luminaire allows for full occupancy sensing and daylight harvesting. The ZigBee Drivers will communicate with all other luminaires wirelessly. Programming and Zoning is achieved via a remote control.

Tunable WHITE (DALI 209) Human Centric Lighting can lead to enhanced concentration and increased productivity. When indoor lighting is matching natural circadian rhythms, this can enhance a sense of well-being, and Melanopic Light can be shown to improve sleep patterns. The CCT range is (2700°k to 6500°k). The Tunable White concepts are set to revolutionize the way we work.

Turn your **working** environment into a **smart office**

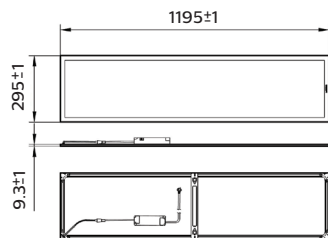
interact
Office

Support employee performance and reduce time wasted with the Interact Office software and system architecture. This will help employees find free meeting rooms or an available workspace, and enable them to personalise lighting. Then use occupancy insights to see where and how people prefer to work, opening your eyes to potential for energy and space savings, and efficiency gains. Simply install LED connected lighting from Philips with embedded IoT sensors, and use interact Office software and insights to increase building efficiency and optimize space to create a sustainable smart office. Available in both wired (POE) and Wireless options. Flicker free.

Dimensions & Weights

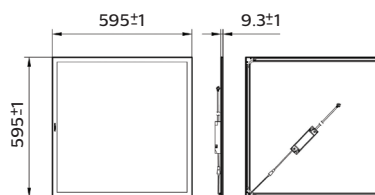
Dimensions shown above are nominal measurements. Slight variations in dimensions may occur in production.

300mm x 1200mm



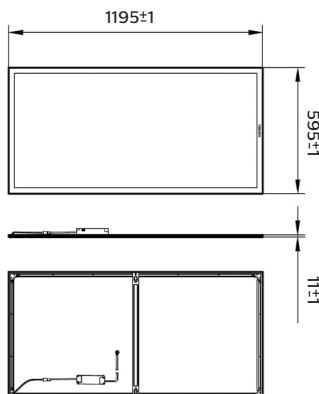
wt. 2KG

600mm x 600mm



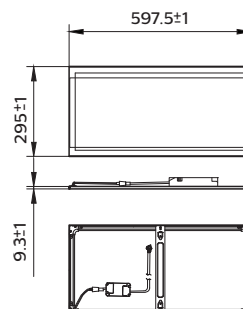
wt. 2KG

600mm x 1200mm



wt. 4.5KG

600mm x 300mm



wt. 1.5KG

Order codes

12NC	Description	Specification
911401781152	RC190V LED27S 940 W30L60 PSD IP44 CAU	Recessed, 28W, 2700lm, 4000K, CRI90, IP44, Dali, Rectangle Small
911401780972	RC190V LED36S 940 W30L120 PSD OC IP44 CAU	Recessed, 36W, 3600lm, 4000K, CRI90, IP44, Dali, Rectangle
911401781032	RC190V LED36S 940 W60L60 PSD OC IP44 CAU	Recessed, 36W, 3600lm, 4000K, CRI90, IP44, Dali, Square
911401781092	RC190V LED40S 940 W60L120 PSD OC IP44 CAU	Recessed, 36W, 4000lm, 4000K, CRI90, IP44, Dali, Rectangle Large
911401781012	RC190V LED36S 940 W30L120 SWZ OC CAU	Recessed, 36W, 3600lm, 4000K, CRI90, IP20, SpaceWise, Rectangle
911401781072	RC190V LED36S 940 W60L60 SWZ OC CAU	Recessed, 36W, 3600lm, 4000K, CRI90, IP20, SpaceWise, Square
911401781132	RC190V LED40S 940 W60L120 SWZ OC CAU	Recessed, 36W, 4000lm, 4000K, CRI90, IP20, SpaceWise, Rectangle Large
911401780992	RC190V LED36S 940 W30L120 IAO OC CAU	Recessed, 36W, 3600lm, 4000K, CRI90, IP20, Interact Office, Rectangle
911401781052	RC190V LED36S 940 W60L60 IAO OC CAU	Recessed, 36W, 3600lm, 4000K, CRI90, IP20, Interact Office, Square
911401781112	RC190V LED40S 940 W60L120 IAO OC CAU	Recessed, 36W, 4000lm, 4000K, CRI90, IP20, Interact Office, Rectangle Large
911401781302	RC190V LED25S 935 W30L60 PSD IP44 CAU	Recessed, 28W, 2500lm, 3500K, CRI90, IP44, Dali, Rectangle Small
911401781212	RC190V LED34S 935 W30L120 PSD OC IP44 CAU	Recessed, 36W, 3450lm, 3500K, CRI90, IP44, Dali, Rectangle
911401781242	RC190V LED34S 935 W60L60 PSD OC IP44 CAU	Recessed, 36W, 3450lm, 3500K, CRI90, IP44, Dali, Square
911401781272	RC190V LED38S 935 W60L120 PSD OC IP44 CAU	Recessed, 36W, 3800lm, 3500K, CRI90, IP44, Dali, Rectangle Large
911401781232	RC190V LED34S 935 W30L120 SWZ OC CAU	Recessed, 36W, 3450lm, 3500K, CRI90, IP20, SpaceWise, Rectangle
911401781262	RC190V LED34S 935 W60L60 SWZ OC CAU	Recessed, 36W, 3450lm, 3500K, CRI90, IP20, SpaceWise, Square
911401781292	RC190V LED38S 935 W60L120 SWZ OC CAU	Recessed, 36W, 3800lm, 3500K, CRI90, IP20, SpaceWise, Rectangle Large
911401781222	RC190V LED34S 935 W30L120 IAO OC CAU	Recessed, 36W, 3450lm, 3500K, CRI90, IP20, Interact Office, Rectangle
911401781252	RC190V LED34S 935 W60L60 IAO OC CAU	Recessed, 36W, 3450lm, 3500K, CRI90, IP20, Interact Office, Square
911401781282	RC190V LED38S 935 W60L120 IAO OC CAU	Recessed, 36W, 3800lm, 3500K, CRI90, IP20, Interact Office, Rectangle Large
911401781162	RC190V LED23S 930 W30L60 PSD IP44 CAU	Recessed, 28W, 2350lm, 3000K, CRI90, IP44, Dali, Rectangle Small
911401780982	RC190V LED32S 930 W30L120 PSD OC IP44 CAU	Recessed, 36W, 3150lm, 3000K, CRI90, IP44, Dali, Rectangle
911401781042	RC190V LED32S 930 W60L60 PSD OC IP44 CAU	Recessed, 36W, 3150lm, 3000K, CRI90, IP44, Dali, Square
911401781102	RC190V LED36S 930 W60L120 PSD OC IP44 CAU	Recessed, 36W, 3600lm, 3000K, CRI90, IP44, Dali, Rectangle Large
911401781022	RC190V LED32S 930 W30L120 SWZ OC CAU	Recessed, 36W, 3150lm, 3000K, CRI90, IP20, SpaceWise, Rectangle
911401781082	RC190V LED32S 930 W60L60 SWZ OC CAU	Recessed, 36W, 3150lm, 3000K, CRI90, IP20, SpaceWise, Square
911401781142	RC190V LED36S 930 W60L120 SWZ OC CAU	Recessed, 36W, 3600lm, 3000K, CRI90, IP20, SpaceWise, Rectangle Large
911401781002	RC190V LED32S 930 W30L120 IAO OC CAU	Recessed, 36W, 3150lm, 3000K, CRI90, IP20, Interact Office, Rectangle
911401781062	RC190V LED32S 930 W60L60 IAO OC CAU	Recessed, 36W, 3150lm, 3000K, CRI90, IP20, Interact Office, Square
911401781122	RC190V LED36S 930 W60L120 IAO OC CAU	Recessed, 36W, 3600lm, 3000K, CRI90, IP20, Interact Office, Rectangle Large
Q2 Release	RC190X LED36S TW W30L120 PSD OC CAU	Recessed, 36W, 4000lm, 209 Tunable White, CRI80, IP44, Rectangle
Q2 Release	RC190X LED36S TW W60L60 PSD OC CAU	Recessed, 36W, 4000lm, 209 Tunable White, CRI80, IP44, Dali, Square
Q2 Release	RC190X LED40S TW W60L120 PSD OC CAU	Recessed, 36W, 4000lm, 209 Tunable White, CRI80, IP44, Dali, Rectangle Large



© 2020 Signify Holding. All rights reserved. Signify reserves the right to make changes in specifications and/or to discontinue any product at any time without notice or obligation and will not be liable for any consequences resulting from the use of this publication. Application images shown may not reflect actual products advertised.

Version: August 2020

Signify New Zealand Limited

Level 3, 123 Carlton Gore Road
Newmarket, Auckland 1023
New Zealand
T: 0800 454 448 / 0800 4 LIGHT

lighting.philips.co.nz

Signify Australia Limited

65 Epping Road, North Ryde
NSW 2113
Australia
T: 1300 110 500

philips.com.au/lighting