




PHILIPS

GreenPerform Batten

BN398C



Philips GreenPerform Batten G3

Series BN398C

High-performance, versatile and connected
lighting solutions for professionals

Philips GreenPerform Batten G3

GreenPerform Batten – For every project where light really matters

The GreenPerform Batten delivers on the promise of innovative, easy-to-use and high-quality luminaires.

The efficient design makes installation quick and easy, enabling seamless light-line creation without additional accessories.

GreenPerform Batten provides universal light distribution, supporting homogeneous illuminance and visual comfort.

Interact Ready luminaires with integrated wireless communications are also available, for use with Interact gateways, sensors and software.



Features

- ✓ **Design flexibility** – Superior optics offer up to 140 lm/W in multiple optical distributions for lighting design flexibility and beyond.
- ③ **Many product options** – Diversity rules with 3 lengths, 4 lumen packages, 4 driver options and 3 CCT's.
- 🔧 **Fully connected and scalable** - DALI, VLC coded lighting and Interact Ready versions available for future-proof peace of mind.
- 🏆 **Reliable performance** – With 50,000 hours life L70B50 and 5 years warranty, you are never left stranded.
- 🔧 **Easy installation** – Easy as, with surface mounted, suspended and track versions compatible with DALI track.

High efficacy:
Up to
140lm / W

**50,000
hours
@L70**

**5
year
warranty**

**Many
options:**
L600/L1200/
L1500/L1800
up to 8700lm

**interact
ready.**

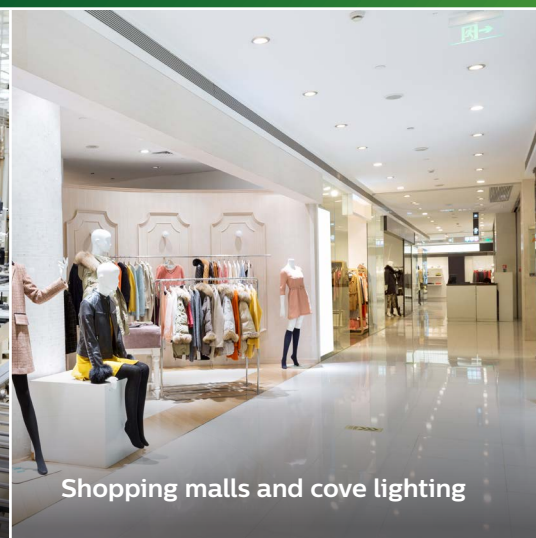
Applications



Industrial production spaces, workshops and technical premises



Assembly and utility areas



Shopping malls and cove lighting

Technical specifications

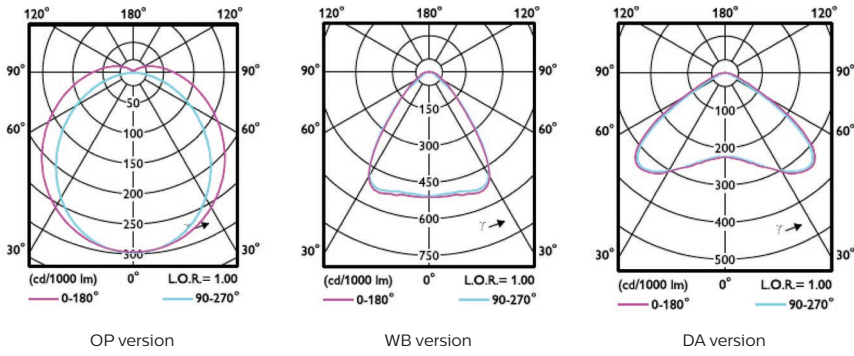
Fixed output

	2000lm			4000lm			6900lm			8700lm		
System Power	14.2	15.5	15.5	29	29	29	49	55	55	61	68	68
Lumen	2000	2000	2000	4000	4000	4000	6900	7200	7200	8700	9000	9000
System efficacy (lm/w)	144	132	132	141	141	141	1431	131	131	143	132	132
Length	L600			L1200			L1200			L1500		
Optical cover	Opal	DA	WB	Opal	DA	WB	Opal	DA	WB	Opal	DA	WB

Connected versions

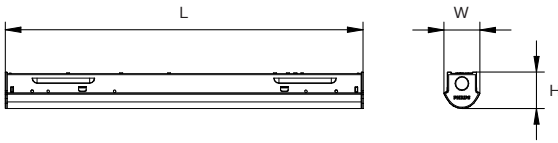
	8700lm		6900lm		4000lm		2000lm	
Control	Dali	VLC	Dali	VLC	Dali	VLC	Dali	VLC
System Power	61	68	49	50	30	31	14.5	N/A
Lumen	8700	8700	6900	6900	4000	4000	2000	N/A
System efficacy (lm/w)	143	128	141	138	137	132	141	N/A
Length	L1500		L1200		L1200		L600	
Optical cover	Opal	Opal	Opal	Opal	Opal	Opal	Opal	Opal
Power factor	0.9							
CCT	NW (4000K), CW (6500K)(WW (3000K) is available as ETO (Engineered To Order)							
Assembly	Standalone							
CRI	>80							
SDCM	<=5SDCM							
IP rating	IP20							
Classification	Class I							
Input voltage	220-240V, 50/60 Hz							
Cable entry	Mid body, to terminal block							
Lifetime (hrs)	50,000 (L70B50)							
Material	Housing: 0.6mm SPCC / Cover: PMMA							
Mounting	Surface mounted, suspended, track-mounted							

Polar intensity diagrams

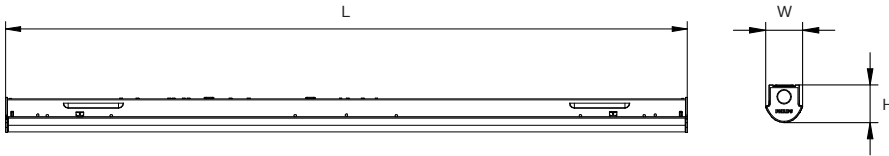


Dimensions

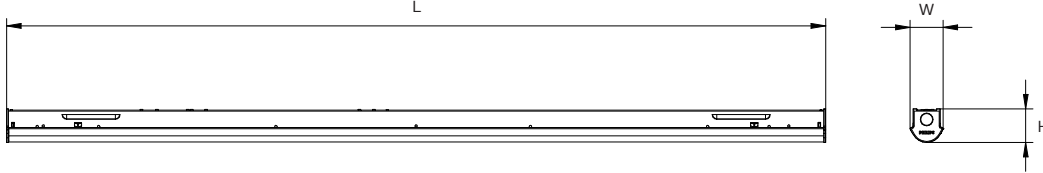
LED20



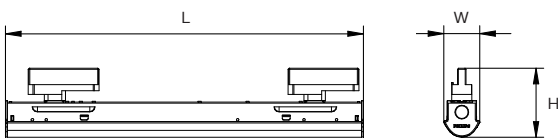
LED40, LED69



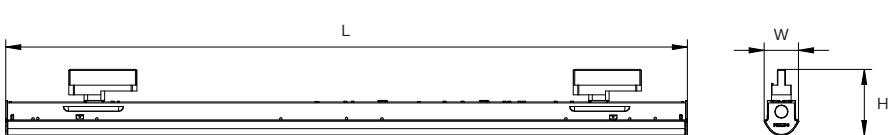
LED87



LED20 TC (track mount)



LED40 TC, LED69 TC (track mount)



Type	LED20	LED40, LED69	LED87	LED20 TC (track mount)	LED40 TC, LED69 TC (track mount)
Length (L, mm)	573	1135	1416	573	1135
Width (W, mm)	58	58	58	58	58
Height (H, mm)	58	58	58	110	110
Weight (Kg)	1	1.7	2	1.1	1.75

Order placement information

Order Codes	Technical Description	Specification
911401588051	BN398C LED20/NW L600 PSD OP TC	GreenPerform batten, 2000lm, CRI80, 4000K, 600mm, DALI, Opal optic, Track mount
911401584051	BN398C LED20/NW L600 PSD OP	GreenPerform batten, 2000lm, CRI80, 4000K, 600mm, DALI, Opal optic, surface mount
911401588251	BN398C LED40/NW L1200 PSD OP TC	GreenPerform batten, 4000lm, CRI80, 4000K, 1200mm, DALI, Opal optic, Track mount
911401584251	BN398C LED40/NW L1200 PSD OP	GreenPerform batten, 4000lm, CRI80, 4000K, 1200mm, DALI, Opal optic, surface mount
911401584451	BN398C LED69/NW L1200 PSD OP	GreenPerform batten, 6900lm, CRI80, 4000K, 1200mm, DALI, Opal optic, surface mount
911401584651	BN398C LED87/NW L1500 PSD OP	GreenPerform batten, 8700lm, CRI80, 4000K, 1500mm, DALI, Opal optic, surface mount
911401589251	BN398C LED40/NW L1200 CL OP TC	GreenPerform batten, 4000lm, CRI80, 4000K, 1200mm, DALI VLC, Opal optic, Track mount
911401586451	BN398C LED40/NW L1200 CL OP	GreenPerform batten, 4000lm, CRI80, 4000K, 1200mm, DALI VLC, Opal optic, surface mount
911401586651	BN398C LED69/NW L1200 CL OP	GreenPerform batten, 6900lm, CRI80, 4000K, 1200mm, DALI VLC, Opal optic, surface mount
911401586851	BN398C LED87/NW L1500 CL OP	GreenPerform batten, 8700lm, CRI80, 4000K, 1500mm, DALI VLC, Opal optic, surface mount
911401582881	BN398X LED20/840 L600 WIA OP	GreenPerform batten, 2000lm, CRI80, 4000K, 600mm, Interact ready, Opal optic, surface mount
911401583481	BN398X LED20/840 L600 WIA OP CAU	GreenPerform batten, 2000lm, CRI80, 4000K, 600mm, Interact ready, Opal optic, surface mount
911401583181	BN398X LED20/840 L600 WIA WB	GreenPerform batten, 2000lm, CRI80, 4000K, 600mm, Interact ready, Wide Beam, surface mount
911401583781	BN398X LED20/840 L600 WIA WB CAU	GreenPerform batten, 2000lm, CRI80, 4000K, 600mm, Interact ready, Wide Beam, surface mount
911401582781	BN398X LED69/840 L1200 WIA OP	GreenPerform batten, 6900lm, CRI80, 4000K, 1200mm, Interact ready, Opal optic, Track mount
911401583381	BN398X LED69/840 L1200 WIA OP CAU	GreenPerform batten, 6900lm, CRI80, 4000K, 1200mm, Interact ready, Opal optic, surface mount
911401583081	BN398X LED69/840 L1200 WIA WB	GreenPerform batten, 6900lm, CRI80, 4000K, 1200mm, Interact ready, Wide Beam, surface mount
911401583681	BN398X LED69/840 L1200 WIA WB CAU	GreenPerform batten, 6900lm, CRI80, 4000K, 1200mm, Interact ready, Wide Beam, surface mount
911401582981	BN398X LED70/840 L1500 WIA OP	GreenPerform batten, 7000lm, CRI80, 4000K, 1500mm, Interact ready, Opal optic, surface mount
911401583581	BN398X LED70/840 L1500 WIA OP CAU	GreenPerform batten, 7000lm, CRI80, 4000K, 1500mm, Interact ready, Opal optic, surface mount
911401583281	BN398X LED70/840 L1500 WIA WB	GreenPerform batten, 7000lm, CRI80, 4000K, 1500mm, Interact ready, Wide Beam, surface mount
911401583881	BN398X LED70/840 L1500 WIA WB CAU	GreenPerform batten, 7000lm, CRI80, 4000K, 1500mm, Interact ready, Wide Beam, surface mount

More options available on request

Accessory and track

12NC – order code	Technical Description	Specification
9114 015 03461	BY398Z CM-S	Bracket for surface mounted
9114 015 03561	BY398Z SPM-S	Bracket for suspended
9114 015 67901	BY208Z SP	Suspended pipe accessory



© 2021 Signify Holding. All rights reserved. The information provided herein is subject to change, without notice. Signify does not give any representation or warranty as to the accuracy or completeness of the information included herein and shall not be liable for any action in reliance thereon. The information presented in this document is not intended as any commercial offer and does not form part of any quotation or contract, unless otherwise agreed by Signify. Philips and the Philips Shield Emblem are registered trademarks of Koninklijke Philips N.V. All other trademarks are owned by Signify Holding or their respective owners.

Version: August 2021

Signify Australia Limited
T: 1300 110 500

www.philips.com/lighting