

PHILIPS

PowerBalance Troffer

RC650B



Philips PowerBalance Troffer

Series RC650B

High-performance, versatile and connected
lighting solutions for professionals

Philips PowerBalance Troffer

Create consistently comfortable office lighting with PowerBalance.

Today we are willing to invest in sustainability and certainly at reasonable cost. The latest generation PowerBalance provides improved energy savings, more consistent light performance and enhanced comfort for the office user. This is achieved with benchmark standards for efficacy and glare control.

DALI and Interact Ready options offer daylight harvesting and motion-sensing which allows for greater efficiency, on-demand illumination and general well-being.

Features



Unique Pyramid optics for high system efficacy of 125lm/w – Great energy savings.



UGR16/19 rating and warmer CCT options (ETO, Engineered To Order) – Very comfortable light with minimal glare creates a working environment for well-being.



50,000 hours rated life (L70B50) lifetime and 5 years warranty – Peace of mind and perfect for most office applications.



Multiple control options including DALI and Interact Pro G2 – wired and wireless options provide flexibility for both new and retrofit applications.

**Low glare
UGR16/19**

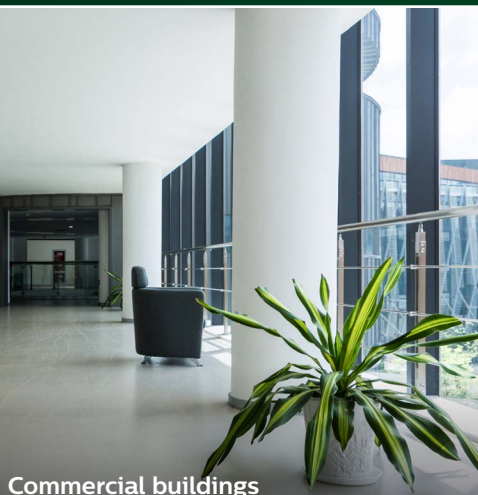
**50,000
hours
5 year
warranty**

**DALI and
Interact
Ready**

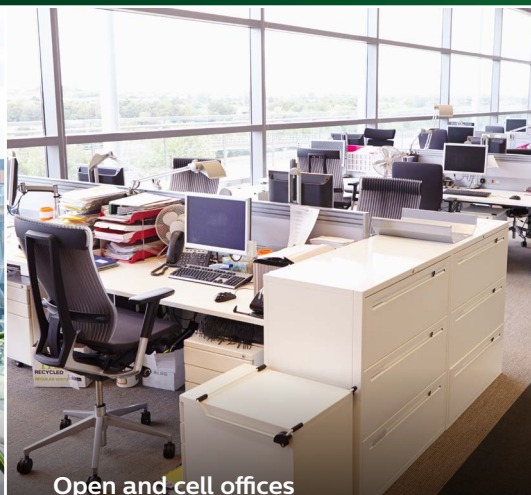
**High
efficacy
125lm/W**

**interact
ready.**

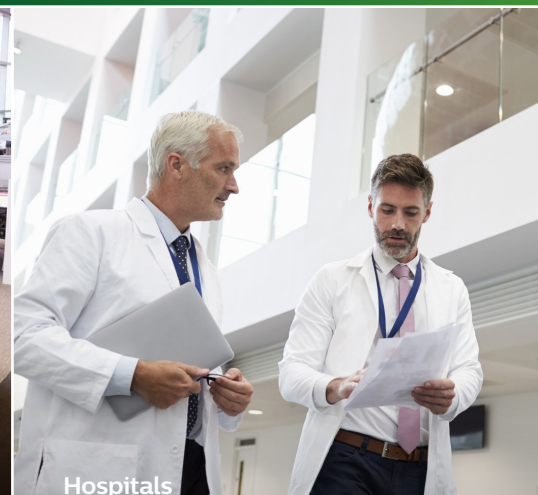
Applications



Commercial buildings



Open and cell offices



Hospitals

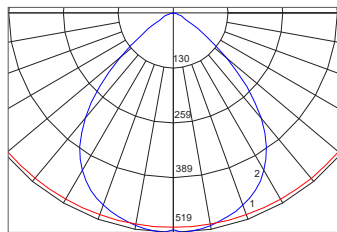
Technical specifications

Model	PowerBalance	
Type	LED30S (ETO, Engineered To Order)	LED40S
System lumen	3000lm	4000lm
Power	TBA	30W
CCT	4000K (3000K, ETO, Engineered To Order)	
CRI	>80	
SDCM	≤3	
UGR	UGR16	
Operating temperature	25°C	
Lifetime (LXXB50)*	50,000 hours (L70B50)	
Drivers	DALI, Interact Ready, fixed output, tunable white (DALI 209, ETO, Engineered To Order)	
Intregrated control	DALI, Interact Pro	
IP rating	IP20	
Electrical class	Class I	
Insulation classification	IC	
Input voltage	200V-240V, 50/60Hz	
Mounting type	Recessed (T-Bar)	
Housing colour	White Powder Coated (RAL9003)	
Material	Diffuser: PC Housing: SPCC	

*When the fitting reaches 70% of initial output.

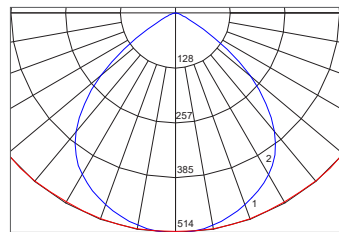
Polar intensity diagrams

W30L120



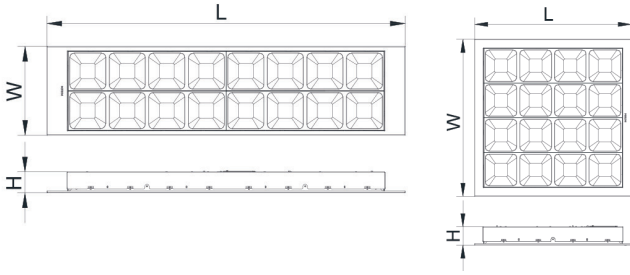
(CD / 1000lm, L.O.R = 1)

W60L60



(CD / 1000lm, L.O.R = 1)

Dimensions



Model	Width (mm)	Length (mm)	Height (mm)	Weight (kg)
Rectangle	297	1,197	70	5.5
Square	597	597	70	5.5

Dimensions shown above are nominal measurements. Slight variation in dimension may occur in production.

Order placement information

Order Code	Material Description	Specification
911401549561	RC650B LED40S840 PSD W30L120 CAU	PowerBalance, 4000lm, CRI80, 4000K, DALI, 300x1,200mm, flex & plug
911401549461	RC650B LED40S840 PSU W30L120 CAU	PowerBalance, 4000lm, CRI80, 4000K, fixed output, 300x1,200mm, flex & plug
911401549361	RC650B LED40S840 PSD W60L60 CAU	PowerBalance, 4000lm, CRI80, 4000K, DALI, 600x600mm, flex & plug
911401549261	RC650B LED40S840 PSU W60L60 CAU	PowerBalance, 4000lm, CRI80, 4000K, fixed output, 600x600mm, flex & plug
911401557281	RC650X LED48/840 W30L120 WIA CAU	PowerBalance, 4000lm, CRI80, 4000K, Interact Ready, no sensor, 300x1,200mm, flex & plug
911401557181	RC650X LED48/840 W60L60 WIA CAU	PowerBalance, 4000lm, CRI80, 4000K, Interact Ready, no sensor, 600x600mm, flex & plug

Other versions available as ETO (Engineered To Order)



© 2021 Signify Holding. All rights reserved. The information provided herein is subject to change, without notice. Signify does not give any representation or warranty as to the accuracy or completeness of the information included herein and shall not be liable for any action in reliance thereon. The information presented in this document is not intended as any commercial offer and does not form part of any quotation or contract, unless otherwise agreed by Signify. Philips and the Philips Shield Emblem are registered trademarks of Koninklijke Philips N.V. All other trademarks are owned by Signify Holding or their respective owners.

Version: November 2021

Signify Australia Limited
T: 1300 110 500

www.philips.com/lighting