



PHILIPS

GreenPerform Troffer

RC100B, SM100C



Philips GreenPerform Troffer

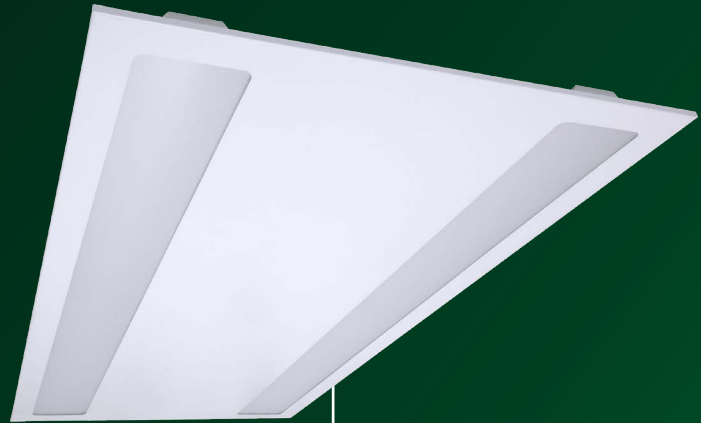
Series RC100B / SM100C

High-performance, versatile and connected
lighting solutions for professionals

Philips GreenPerform Troffer

Cost-effective office lighting with the **GreenPerform Troffer**

Whether for a new building or renovation of an existing space, you want lighting solutions that provide quality of light and substantial energy and maintenance savings. The GreenPerform range of LED products have high specifications and can be used to replace functional luminaires in general lighting applications. The process of selecting, installing and maintaining is a simple switch. InterAct ready luminaires with integrated wireless communications in this family are available to be used with InterAct gateways, sensors and software.



Features

- ✓ **Affordable, great optics and high specification – Enables a simple retrofit to LED luminaires at an affordable price.**
- 👁️ **Low UGR ratings (UGR19) – Low glare office.**
- 🔧 **Slim design and ease of installation – Fast job and great look.**
- ↔️ **Recessed and surface mount options – Complete family of luminaires.**
- 💡 **Interact Pro – Easy-to-use wireless connected lighting system.**

UGR19

Engineered To Order (ETO) options

50,000 Hrs / 5 years warranty

Flex & plug

interact ready.

Applications



Open-plan offices and cell offices



Education & Healthcare



Meeting and training rooms

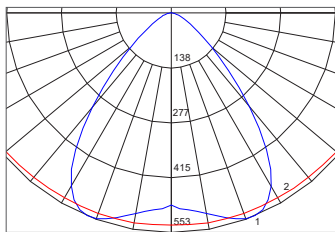
Technical specifications

Model	GreenPerform Troffer (RC100 & SM100)		
Type	LED27	LED37	LED54 (600x1,200mm, available as ETO (Engineered To Order))
Power	23W	32W	44W
System lumen	2700lm	3700lm	5400lm
System efficacy	116-125lm/W		
Power factor	>0.9		
Type	Fixed Output, Dali, InterAct Pro		
Electrical class	Class I		
Input voltage	220V-240V, 50/60Hz		
CCT	4000K (NW) 3000K & 6500K Available as ETO (Engineered To Order)		
CRI	>80		
SDCM	<4		
UGR	UGR19 (2700lm and 3700lm OC (Office Compliant) versions)		
Operating temperature	0°C - 40°C		
Lifetime (L70)*	50,000 hours		
IP rating	IP20		
Mounting type	Recessed & Surface		
Housing colour	White powder coated (RAL 9003)		
Cable	1.2m pre-wired flex & plug (CAU)		
Material	Diffuser: PC Housing: Metal housing		

*When a new fitting reaches 70% of full potential

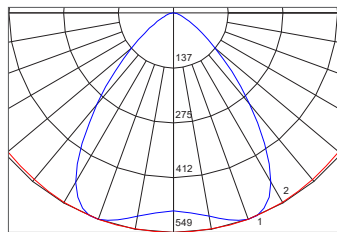
Polar intensity diagrams

W30L120



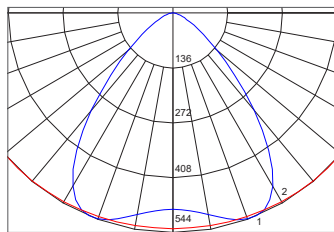
(CD / 1000lm, L.O.R = 1)

W60L60



(CD / 1000lm, L.O.R = 1)

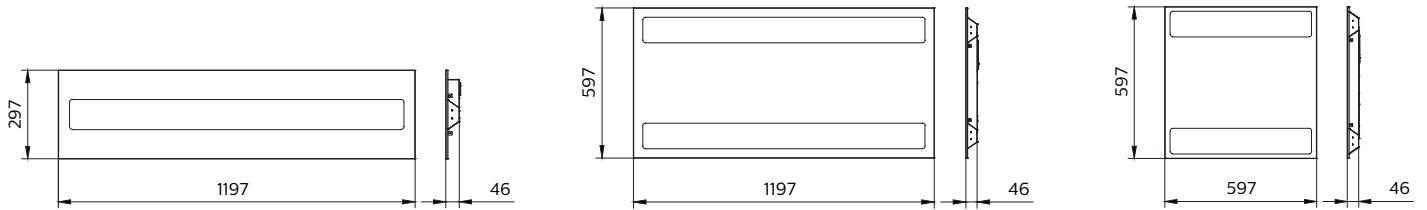
W60L120



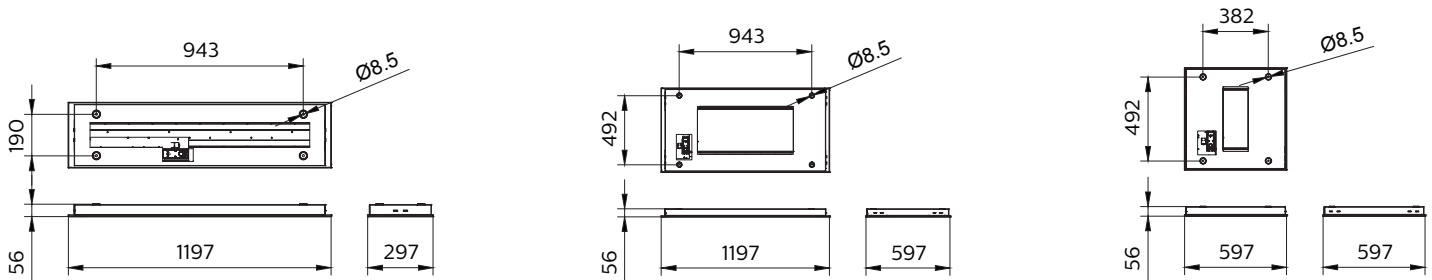
(CD / 1000lm, L.O.R = 1)

Dimensions

Recessed mounted



Surface mounted



Dimensions shown above are nominal measurements. Slight variations in dimensions may occur in production.

Order placement information

Order Codes	Material Description	Specification
911401514251	RCI00B LED37S 840 W60L120 PSU OC CAU	Recessed troffer, 3700lm, 4000K, 600x1200mm, fixed output, UGR19
911401514051	RCI00B LED37S 840 W60L120 PSD OC CAU	Recessed troffer, 3700lm, 4000K, 600x1200mm, DALI, UGR19
911401509451	RCI00B LED37S 840 W60L60 PSU OC CAU	Recessed troffer, 3700lm, 4000K, 600x600mm, fixed output, UGR19
911401508951	RCI00B LED37S 840 W60L60 PSD OC CAU	Recessed troffer, 3700lm, 4000K, 600x600mm, DALI, UGR19
911401508551	RCI00B LED27S 840 W60L60 PSU OC CAU	Recessed troffer, 2700lm, 4000K, 600x600mm, fixed output, UGR19
911401584181	RC100X LED37 840 W60L60 WIA CAU	GreenPerform Troffer, 3700lm, CRI80, 600x600mm, Interact Ready, flex&plug, no sensor onboard
911401584281	RC100X LED37 840 W30L120 WIA CAU	GreenPerform Troffer, 3700lm, CRI80, 300x1200mm, Interact Ready, flex&plug, no sensor onboard
ETO	RCI00B LED37S 840 W30L120 PSD OC CAU	Recessed troffer, 3700lm, 4000K, 300x1200mm, DALI, UGR19
ETO	SMI00C LED27S 840 W30L120 PSU OC CAU	Surface Mounted troffer, 2700lm, 4000K, 300x1,200mm, fixed output, UGR19
ETO	SMI00C LED27S 840 W30L120 PSD OC CAU	Surface Mounted troffer, 2700lm, 4000K, 300x1,200mm, DALI, UGR19
ETO	SMI00C LED37S 840 W30L120 PSU OC CAU	Surface Mounted troffer, 3700lm, 4000K, 300x1,200mm, fixed output, UGR19
ETO	SMI00C LED37S 840 W30L120 PSD OC CAU	Surface Mounted troffer, 3700lm, 4000K, 300x1,200mm, DALI, UGR19
911401584181	RC100X LED37/840 W60L60 WIA CAU	GreenPerform Troffer, 3700lm, CRI80, 600x600mm, Interact Ready, flex&plug, no sensor onboard
911401584281	RC100X LED37/840 W30L120 WIA CAU	GreenPerform Troffer, 3700lm, CRI80, 300x1200mm, Interact Ready, flex&plug, no sensor onboard

More options available as ETO (Engineered To Order).



© 2021 Signify Holding. All rights reserved. The information provided herein is subject to change, without notice. Signify does not give any representation or warranty as to the accuracy or completeness of the information included herein and shall not be liable for any action in reliance thereon. The information presented in this document is not intended as any commercial offer and does not form part of any quotation or contract, unless otherwise agreed by Signify. Philips and the Philips Shield Emblem are registered trademarks of Koninklijke Philips N.V. All other trademarks are owned by Signify Holding or their respective owners.

Version: November 2021

Signify Australia Limited
T: 1300 110 500

www.philips.com/lighting