

PHILIPS

LED tubes

New



Real pros say farewell to fluorescent.

The new Philips MASTER Value LEDtube Universal T8.
Maximum value – monumental performance.

Enjoy more ease and speed of installation with the new **Philips MasterValue LEDtube Universal T8**. As a robust and reliable universal tube, its compatible with all kinds of driver technologies. Its unique design guarantees safe 'plug and play' installation on most common electronic ballasts. And thanks to a high degree of efficiency and long service life, the MasterValue LEDtube Universal T8 is the ideal alternative to standard fluorescent tubes for all demanding lighting applications.

**REAL
PROs**
**REAL
QUALITY**

Philips MASTER Value LEDtube T8 – unique in the market

- ✓ **Universal compatibility** – compatible with all kinds of driver technologies (EM ballast, HF ballasts and direct mains)
- ✓ **Glass platform** – uniform light (large beam angle 240D – suitable for many applications)
- ✓ **Ultra high lumen package** – up to 3700 lumen
- ✓ **InstantFit technology** – for largest HF ballast compatibility, safety and ease and speed of installation

Applications

- ✓ Office
- ✓ Industry, Warehouses and coldrooms
- ✓ Parking lots and covered car parks
- ✓ Signage
- ✓ Office & industrial facilities (walkways, stairways, storage, etc.)
- ✓ Education, retail spaces

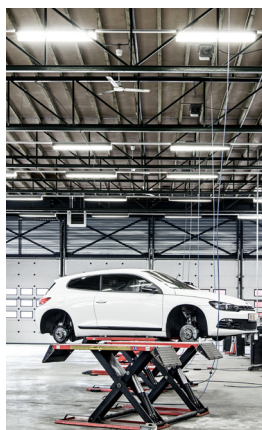
Philips LED tubes – unique benefits

- ✓ Up to 65% more energy efficient than conventional TL-D (fluorescent) lamps
- ✓ Up to 3× longer lasting performance than conventional TL-D (fluorescent) lighting tubes
- ✓ Retrofit to existing T8 lamps on EM ballast installations
- ✓ Affordable proposition – suitable for small and medium sized businesses
- ✓ Immediate, 100% lumen output – no flickering or buzzing
- ✓ Full safety features and EM Protector safety device
- ✓ Guarantee of up to five years*
- ✓ Easily find the right product for every area of application with the [product finder](#) and impress your customers with your expertise in all kinds of LED lighting solutions.

Click the link, scan the code or visit www.productfinder.lighting.philips.com



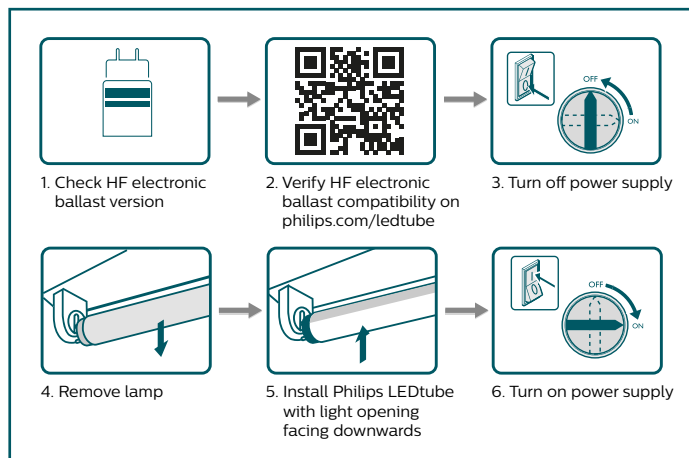
* For warranty conditions, visit
www.lighting.philips.com/main/support/support/warranty



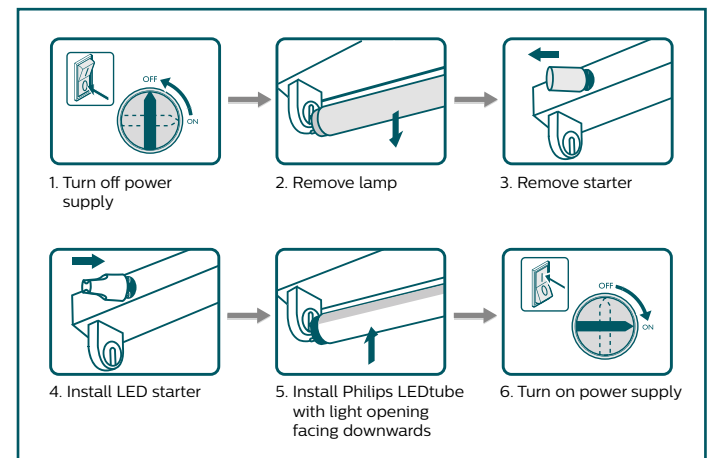
100 % safe installation – easier than ever before

LED tubes provide the fastest and simplest way to convert existing luminaires to LED technology. Installation is 100 % safe and convenient thanks to simple lamp-for-lamp replacement.

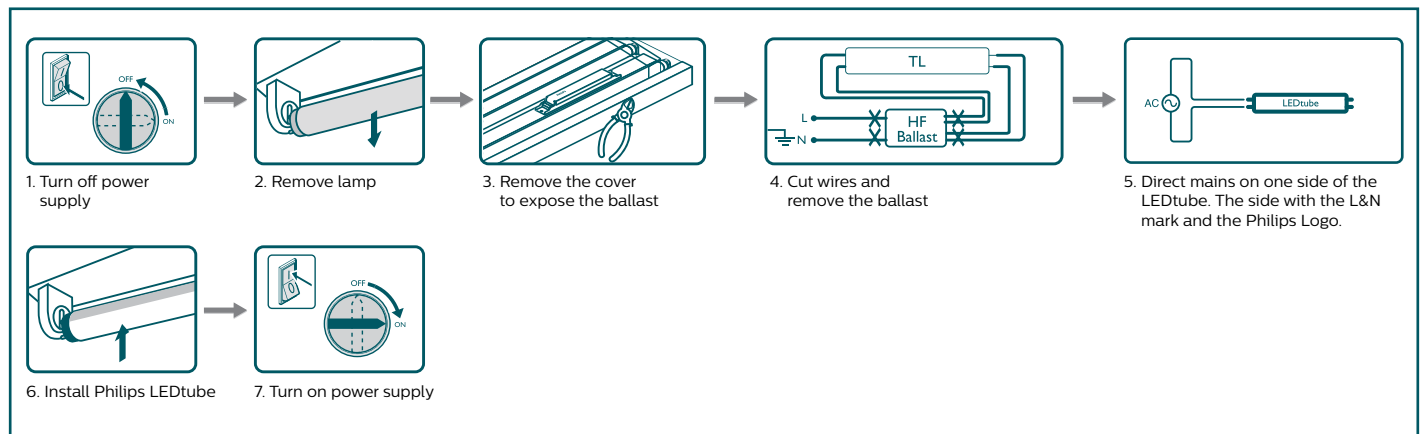
Installation instructions for Electronic Ballast (HF)



Installation instructions for Electro-magnetic Ballast (EM)



Installation instructions for direct mains connection



To check if your ballast is compatible, always refer to the latest update of the Philips LEDtube compatibility on www.philips.com/ledtube

Order information



Product Type	LED	Lumen Output	Efficacy	Beam Angle	CRI	Color Temp.	Lifetime	EEL	EOC code
MASTER Value LEDtube Universal T8									
MAS LEDtube VLE UN 1200mm UO 16W830 T8	16	2300	144	240	83	3000	50000	A++	73917100
MAS LEDtube VLE UN 1200mm UO 16W840 T8	16	2500	156	240	83	4000	50000	A++	73919500
MAS LEDtube VLE UN 1200mm UO 16W865 T8	16	2501	156	240	83	6500	50000	A++	73921800
MAS LEDtube VLE UN 1500mm UO 24W830 T8	24	3400	142	240	83	3000	50000	A++	73923200
MAS LEDtube VLE UN 1500mm UO 24W840 T8	24	3700	154	240	83	4000	50000	A++	73925600
MAS LEDtube VLE UN 1500mm UO 24W865 T8	24	3700	154	240	83	6500	50000	A++	73927000

