



Annual Report 2022



©ignify foundation

Table of contents

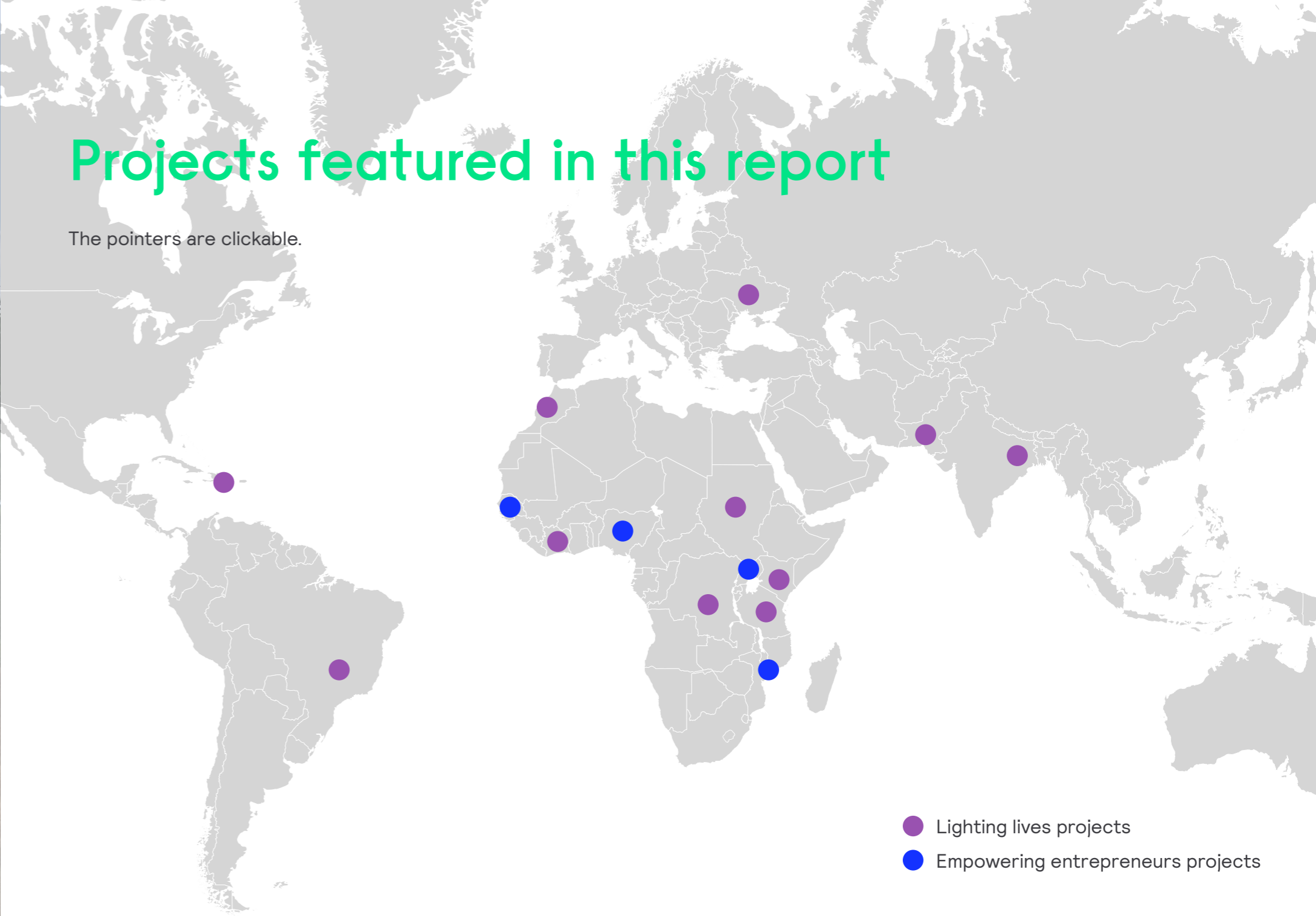
Sharing the power of light	5
About the Signify Foundation	7
Message from the board	8
Looking back & forward	10
A spotlight on our 2022	11
The foundation's focus areas	12
Lighting lives	14
Disaster relief	15
Health centers & clinics	16
Schools & playgrounds	18
Humanitarian & livelihood	22
Empowering entrepreneurs	29
Capacity building	30
Working capital	33
Financial Statements	36
Colophon	41



Solar street lighting installed in Ghana

Projects featured in this report

The pointers are clickable.



- Lighting lives projects
- Empowering entrepreneurs projects



One of the 22 schools that was lit in Maghreb district, Morocco



Girl in Sundarbans, India studying with a solar lantern

Sharing the power of light

Light is a fundamental part of our lives. With a flick of a switch, it transforms darkness into places where people can work, learn and create. Education, economic activity and safety in the streets all require access to light, which is enabled by access to affordable and clean energy. 770 million people in the world still live without access to electricity.

The Signify Foundation is committed to enabling access to the benefits of sustainable lighting solutions to underserved communities.

Our ambition is to bring light to 10 million people in underserved communities by 2025. For the year 2022, we counted 1.1 million lives lit, putting the total number for our 6 years of operations at 8.3 million so far. We are proud of our progress toward our mission, yet we know that there is still much to do.

We invite you to explore our annual report and learn more about our work and the impact we are making in communities around the world.

 **Signify foundation**

Registered charity in the Netherlands (ANBI), RSIN number 857684553.



Playground solar outdoor lighting in Kapata, DRC

About the Signify Foundation

The Signify Foundation is an independent, non-profit organization primarily funded by Signify NV. Our mission is to enable underserved communities to access the benefits of sustainable lighting solutions. We believe that access to light is a fundamental human right, and we are committed to working toward a world where everyone has the opportunity to thrive.

The Foundation's core activities support the supply of energy-efficient lighting to places where access to the grid is either limited or non-existent. This is either achieved through 'Lighting lives': direct lighting product donation and installation in poorly electrified communities for local livelihood development or through 'Empowering entrepreneurs': empowering the people driving the ecosystem that brings light to last-mile communities.

We support local capacity development, particularly targeting women and youth. From technology manufacturers, logistics,

and distribution agencies to financing partners, training institutions, and other donors, the Signify Foundation's choice of partners aligns with our objective to enable market-based ecosystems where the local need for light can be met through local supply.

The Signify Foundation employs Signify's expertise to help develop and provide accessible, sustainable lighting systems that have a meaningful impact on people's lives. Our projects and partnerships directly contribute to the United Nations' Sustainable Development Goals, in particular to 5 (Gender Equality), 7 (Affordable and Clean Energy), 8 (Decent Work and Economic Growth), and 11 (Sustainable Cities and Communities).



Message from the board

The Signify Foundation Board is pleased to present the annual report for the year 2022.

Thanks to our partnerships with non-governmental organizations, social enterprises, and other stakeholders, the Signify Foundation has enabled access to light to communities in need. We have also continued to advocate for stronger investment in renewable energy and other sustainable solutions that can help close the energy access gap. We have formed new partnerships and are working on longer term projects to maximize the impact we can make.

Much work remains to be done. According to the International Energy Agency, 770 million of the world's people did not have access to electricity in 2022. This number was projected to decrease to zero by 2030 according to SDG 7 goals, but progress is off track. It is estimated

that 600 million people will still live without access by 2030, most living in sub-Saharan Africa.

In addition, the number of people forcibly displaced due to climate disasters and geopolitical conflicts is increasing each year. In 2022, an estimated 25.5 million people were displaced due to climate disasters alone (UNHCR, 2022), further exacerbating the issue of access to stable energy.

By increasing our ambition level, forging broader partnerships for collaboration and funding opportunities, and focusing on local, simple, and participatory solutions, we can make an even greater impact in the years to come. We are grateful for the support of our partners and stakeholders, and we look forward to continuing to work together to build a more sustainable future for all.

The Signify Foundation board



Harry Verhaar
Chair of the Board



Pieter de Haan
Board Member



Stanley Anyetei
Board Member



Maloe de Reuver
Board Member



Solar lanterns given to midwives and nurses in Sudan

Looking back & forward

Our past and ongoing partnerships have taught us how to look at energy issues at large and in a holistic way. Meanwhile, we have received welcome support on the details through the voluntary assistance of Signify colleagues across functions including legal, finance, due diligence and strategy colleagues, lighting experts, and project managers. Spanning this holistic and detailed view is the operations team of the Foundation, which runs our day-to-day operations.

This team evolves through the learnings derived from the projects, field visits, and conversations and discussions with our partners to better understand where the role of lighting lies for development and, subsequently, the role of the Signify Foundation.

This year's 'Message from the board' mentions the importance of increasing our ambition to close the energy gap. That is why 2022 was a year to reflect and evaluate, but also act. What can we take

from six years of operations to increase our ambition for the future? You will read about the reflection and focus created in the 'our focus areas' chapter.

In 2023 we will seek funders and partners to amplify impact together and work on collaborations to share knowledge from within and outside of our lighting community. We will have a new team member working from Nairobi to oversee projects in Eastern Africa, while the team in Amsterdam continues to manage global projects, scope and strategy for the Foundation to meet our ambitions.

To our partners; we deeply value our relationship and hope for your continuous open mind to bring lighting to those who need it most. We thank you for your wisdom and look forward to making more impact in the years to come.

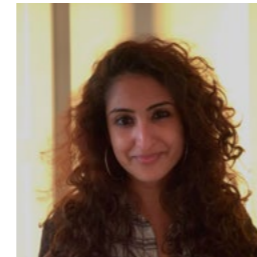
Yue Cui, Director



Yue Cui
Director



Paul Sloekers
Interim Director



Tarini Bhasin
Program Coordinator



Lou Van Reemst
Program Coordinator



Merve Atus
Communication Lead '22



Celia Wan-Sze Yiu
Project Intern '22



Aninda Eijkens
Project Intern '22



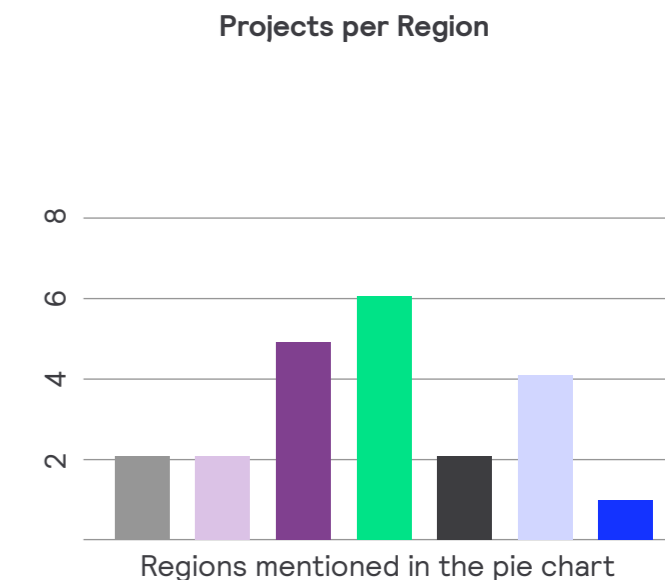
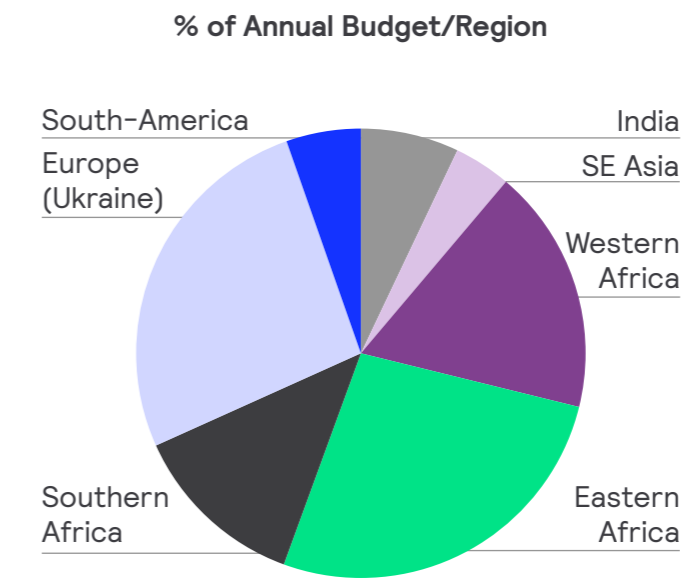
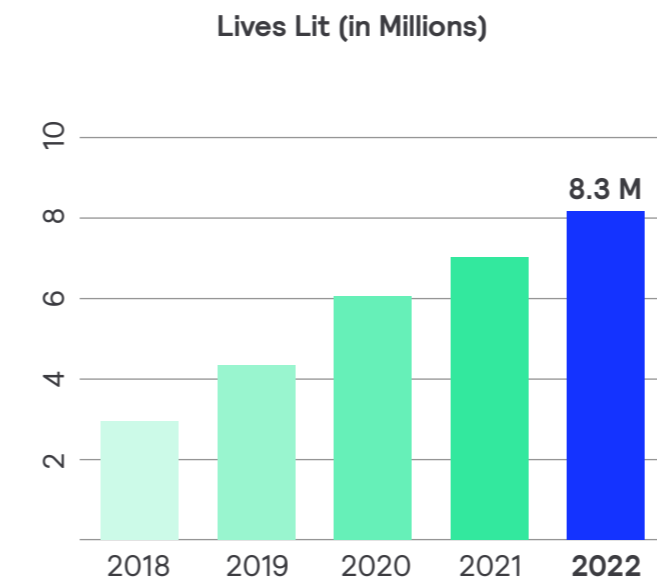
Lea Richter
Project Intern '22

A spotlight on our 2022

1.1 Million Lives Lit
259 Entrepreneurs Empowered

22 projects executed
in 17 countries

18 Lighting Lives projects
4 Empowering Entrepreneurs



The foundation's focus areas

Reflecting on the first years of the Signify Foundation's journey as a stand alone lighting foundation provided us with insights on how projects and partnerships were formed and what we learned from the projects we executed. We also learned from the internal and external operations and management that are all part of making the intended impact.

In our six years in operation, we have worked with diverse projects, places, and partners. Circumstances like global politics, scarcity and logistics, climate effects on regions and transportation, COVID, or human capacity have made some projects more challenging to execute than others. We have therefore approached 2022 with the question: 'How can we further enhance effectiveness and impact outcomes with the resources we have?'

Our focus is threefold: 1. Thematic focus 2. Geographical focus and 3. Long-term partnerships & collaborations.

1. Thematic focus

This year, we have improved our project categorization. We looked at over 100 executed projects and classified them under more specific project types than the previously used 'Lighting lives', 'Humanitarian lighting' and 'Lighting entrepreneurs'. Our new project categories fall under two main pillars: **Lighting lives** and **Empowering entrepreneurs** with six sub categories, closely defining the project types. This focus allows for better tools to assess the suitability of future projects and monetize and evaluate ongoing and finalized projects. See a visual explanation on the next page.

2. Geographical focus

With the Lighting lives and Empowering entrepreneurs pillars, we will focus on regions of the world where access and opportunity to execute our projects are most effective. Our focus will be on markets where Signify is present, where we can leverage existing partners and execute projects confidently and gently.

3. Long-term partnerships & collaborations

Our most valuable projects have historically spanned multiple years and have been executed with local or well-established partners, or combined partnerships. These partnerships can create agility, diversity, and acute attention for projects in need during the project period. However, there is always a demand for continuation and, therefore, a need for a present project lead that understands how knowledge and management transfers can be shaped through any given timeline.

Those are the partners we continue to look for and work with to ensure that end-user and stakeholder needs are met.

Focus areas breakdown

Pillar	Lighting lives			Empowering entrepreneurs	
Sub-pillars	Disaster relief	Community lighting		Capacity building	Working capital
	Health centers & clinics	Schools & playgrounds	Humanitarian & livelihood		
Who	Poorly electrified communities			Entrepreneurs reaching the last-mile communities with clean energy products	
Where	Eastern and Southern Africa, South and South East Asia; Central and North Latin America			Eastern Africa	
What	Enhancing health, safety & security, education and livelihoods through light access			Providing access to lighting products in the last-mile	
How	Grants for lighting products & installation			Grants	Recoverable grants
% annual budget	15%	30%		20%	30%

Lighting lives

Projects that fall under our Lighting lives pillar enable access to the use of highly efficient and durable lighting solutions that address the entire spectrum of lighting needs within a community. These can either be in- or outdoor lighting systems.

The Signify Foundation supports a diverse array of projects, mainly with solar/ LED indoor lights, solar flood lights, and solar street lights. Light access products and services do not merely constitute a straightforward, one-off product donation and installation because they exist as a means to an end: they enhance safety and security, opportunities for education and play, economic and livelihood development, healthcare improvement and generally speaking, quality of life.

Lighting lives targets both disaster-affected people under ‘Disaster relief’ and communities in a broader sense under ‘Community lighting’.

Community lighting includes:
Health centers & clinics
Schools & playgrounds
Humanitarian & livelihood

For Disaster relief, we will support developing countries as need arises in discussion with the board and when it is possible to do so within our budget.

We support Lighting lives pillar projects with grants and services for direct placement or donation of lights.

Lighting lives: Disaster relief

Ukraine – GlobalMedic, UNHCR, European Food Banks Federation

The war in Ukraine has led to a dire humanitarian situation in the country and at its borders, requiring a robust international response and assistance for those who are displaced or otherwise deprived of basic resources.

Humanitarian lighting has been a key focus of the Signify Foundation. Since the start of the war, the Foundation has been working to identify emergency lighting needs and to mobilize relief aid to Ukraine and its neighbors. The Signify Foundation has delivered various types of support with the help of our partners, colleagues, and extra committed €800,000 in funding by Signify NV.

In early 2022, we focused on immediate relief, providing portable lights to internally displaced people (IDP) and refugees. From October onwards, we have been working closely with Signify Ukraine to identify lighting needs for medium-term infrastructure building in Internally Displaced People’s settlements, hospitals, and public spaces in the most impacted communities.

Through our partnerships with actors such as GlobalMedic, UNHCR the UN Refugee Agency, the European Food Banks Federation, Cooper Lighting and our Signify Ukraine colleagues, we have been able to distribute more than 35,000 portable lights to families and communities in need.



A Ukrainian woman holding a Cooper light



Scan or click on the QR code for a short tour through the hospital at night.

Lighting lives: Health centers & clinics

Homabay and Siaya County, West Kenya – Bright Dada

Together with local NGO Bright Dada, the Signify Foundation has lit up seven remote health centers in Homabay County, West Kenya. A variety of lighting designs were created for the health centers featuring indoor LED bulbs and tubes and outdoor solar lighting.

Nurses and doctors at the health centers reiterated the importance of access to sustainable light at night to increase the chances of patient survival when urgent treatment is needed. Also, women going into labor at night face a lower risk of complications now that proper lighting is

available for doctors and nurses to provide the care they need.

In addition to lighting the isolation centers, pediatric and maternity wards and waiting bays, the Signify Foundation worked with Bright Dada to install solar outdoor lighting. With lights around the health centers, people can find their way more easily, nurses feel more secure when receiving new patients at night, and patients can use the latrines safely and securely. In 2023, a further 20 health centers will be lit in Busia and Siaya County, also in West Kenya.

**“Proper lighting at night can mean the difference between life and death”
– Nurse Grace**

Learnings

- LED tubes work better than bulbs to prevent vandalism and theft.
- A backup system for energy provision is needed for the indoor lighting solutions if the power goes off.
- A responsibility plan is vital for maintenance of the lighting in case of default when the warranty runs out
- Providing health centers with high-quality and all-in-one lighting makes a huge difference compared to lower-quality alternatives: The lights stay on.
- Neighboring health centers in the region have seen the effect of the lighting installed and are now seeking similar solutions.

Impact

- Improved safety & security in the health centers and on its premises
- Improved light during medical treatments given at night (LED tubes instead of bulbs).
- Number of people who benefited from the newly installed lights so far: 76,000



Nyahera subcounty hospital in Homabay County, Kisumu – Kenya

Lighting lives: Schools & playgrounds

Arusha, Tanzania – Don Bosco KIITEC Institute

Don Bosco KIITEC Institute is a vocational training institute in Arusha, Tanzania. It is part of the Don Bosco Network, a global network of schools and vocational training centers. One of the unique features of Don Bosco KIITEC Institute is its focus on practical, hands-on training. Students are provided with opportunities to gain real-world experience through internships and work placements with local employers.

The institute was established in 2010 to provide vocational training and skills development to young people in the Arusha region. It offers a range of courses in fields such as automotive mechanics, welding and fabrication, electrical and electronics, ICT, and hospitality and tourism.

The institute decided to expand to allow more students to partake in their curriculum: Day school for students from within, and boarding for students from outside the region. The Signify Foundation supported both in- and outdoor lighting for the institute so that students could continue their activities at night, such as studying, socializing, playing sports, and safely using the external washrooms.

Importantly, the facility's energy consumption on lighting has been reduced by around 50% now that the fluorescent lighting tubes have been replaced with energy-efficient LED tubes.

Learnings

- Getting the lights from Kenya into Tanzania required special logistics planning to manage COVID regulations at the border.
- The institute can showcase to their students and surrounding communities that their lighting energy bills can be reduced by 50% if they make the switch to high-quality LED lighting solutions.


Impact

- The boarding school now hosts 49 students, while over 200 students use the sports facilities and school premises during the day. The new lighting has improved study and play conditions for the students.
- Improved safety and security for the boarding students to be outside at night

“Proper lighting for our rooms, corridors and the surroundings improves our living conditions and gives us a beautiful setting to excel in our studies and build our future.” – Mary Peter, student.



Outdoor playground on the Don Bosco KIITEC Institute premises



Lighting lives
Playgrounds

Saba, the Dutch Antilles – Johan Cruyff Foundation

All children should have the right to play sports. Regardless of gender or disability. The Johan Cruyff Foundation supports the building of playgrounds across the globe, giving equal opportunities for the youth to play sports. The Signify Foundation supported the lighting for several courts globally. The installation of outdoor solar lighting on the island Saba, was finalized in 2022.



Lighting lives
Livelihood

Amazon forest, Brazil – IDEAAS

With the “Giving light to the future” project by NGO IDEAAS in Brazil, we have supported isolated off-grid communities Amazonas and Amapá in the Amazon forest with in- and outdoor solar lighting solutions. 6 schools have been lit, and portable lights given to students and teachers. The health centers have been provided with solar systems for lighting at night, while midwives and health agents were also given portable lamps.

The lights increase the productivity of the students, efficiency in the health centers and safety and security at night.

Lighting lives: Humanitarian & livelihood

Sundarbans, India - SEED India

In rare cases, such as the off-grid island Ghoramara in India, we agree to donate solar light directly to households. This is one of those special projects.

Equality, Education, Empowerment and Environment are the four pillars of NGO SEED India. For over two decades, SEED has been lifting people out of poverty in West Bengal by giving them opportunities through education, small business training, and interventions that can affect the community as a whole.

One of our 2022 Livelihood & humanitarian projects was a collaboration with SEED, the Signify Foundation, and Signify India. The Sundarbans delta, south of Kolkata, is the world's largest mangrove forest and is home to 4.5 million people and 450 wildlife

species. 70% of the people in this region live below the poverty line.

One of the islands in the delta, Ghoramara Island, has been heavily affected by cyclones and climate change; almost 40% of the island has eroded. Although many of the community became climate refugees, a small part remains. The community is not connected to the grid and relies on unhealthy and expensive candles and kerosene lamps at night.

The Signify Foundation funded 770 solar lanterns, improving safety and security (especially for women and girls) and enabling youth to study after dark. The Signify India team trained the community on using the lanterns and also on the benefits of solar and renewable energy.

Impact

4000 lives were positively affected by solar lanterns



Children in Goramara, India studying at night with solar lanterns

Lighting lives: Humanitarian & livelihood

Pakistan – UNHCR, The UN Refugee Agency

Pakistan has a decades-long history of hosting refugees, dating back to the Afghan refugee crisis in the late 1970s. The nation has also had to contend with waves of internally displaced people, such as the 33 million people forced to flee the weeks-long torrential rains and flooding in September 2022.

Together with our global partner UNHCR, the Refugee Agency, we are supporting a project to light up two refugee villages in North (Khazana) and East (Quetta) Pakistan. The villages will be provided with ‘all-in-one’ solar street lighting solutions. The lighting kits are easy to install, require a low level of maintenance and are vandal proof.

Reliable lighting solutions are extremely important in vulnerable contexts like

refugee settlements and camps. Crime and gender-based violence occurs more often when there’s poor lighting or security in place. This leaves many women and young people in unsafe situations, more so at night.

In 2022, the Signify Pakistan team conducted its first visits to better understand the lighting needs in these villages. The team plotted a map, identifying the most important places for street lighting, whilst also ensuring the proposals met the Signify Foundation’s budget for the scheme too.

From our 2022 Signify report on the Rhino Refugee Camp in Uganda, we found that all-in-one solutions have a much better longer term impact than the traditional solar street lights that comprise a

separate solar panel, battery and lighting parts. The latter were frequently broken, demolished or damaged by vandalism.

With the more robust all-in-one solution, we can demonstrate the power of well-made and simple solutions that can offer to our projects and partners, for which we continue to advocate for the impact it can make versus the initial costs. These simple, affordable and scalable solutions can help light up more refugee settlements going forward.

The impact report will be shared in 2023.

Learnings

One major learning was that villages are remote. A lighting map, including installation plan, needs therefore to be well planned and catered for. For ongoing operation and maintenance needs, it is important to factor in responsibility and training into future programmes.



Quetta village, an off-grid refugee settlement in East Pakistan

Lighting lives: Humanitarian & livelihood

Kapata, Democratic Republic of Congo – Fair Cobalt Alliance

The Fair Cobalt Alliance is a multi-stakeholder platform led by the Impact Facility, a non-profit social enterprise, with the purpose to help strengthen and professionalize the artisanal cobalt mining sector of the Democratic Republic of Congo (DRC) and contribute to local economic development at large.

The Alliance is focused on addressing social, environmental, and economic challenges associated with artisanal cobalt mining in the DRC. Kapata is a critical source of this important mineral in producing batteries for electric vehicles and other tech applications. By bringing together a diverse range of stakeholders, the Fair Cobalt Alliance aims to promote responsible and sustainable mining practices, improve the livelihoods of mining communities, and ensure that cobalt is mined and traded ethically and transparently.

The Signify Foundation has played a crucial role in bringing solar outdoor lighting to the markets, schools and clinics in Kapata. The biggest impact can be found in the safety and security that these lights bring. Both in the schools and clinics, the stakeholders mention an improved feeling of security and reduced Gender Based Violence risks for women and youth, while in the market, the traders talk about the safety of the goods being traded, allowing for more business at night.

Learnings

- Logistics schedules must be adjusted according to the seasons: rainy season can cause enormous delays.
- Earlier planning on installation sites to ensure the lighting solutions are appropriately distributed.

Impact

- The lighting installed increased the safety and security of women and youth, and also the security of goods traded in the market at night.
- Number of lives impacted so far: 61,000



Kapata market in Congo with street lighting installed



Solar panel installments on the roof of a hospital Sofala province, Mozambique - SolarWorks!

Empowering entrepreneurs

In the past six years, we have worked with our partners to bring light and opportunities to people who aspire to create a brighter future for poorly electrified communities.

The impact of lighting lives can be made sustainably through investment rather than aid.

The Signify Foundation aims to extend its impact across the entire value chain, partnering with institutions to enable clean energy distribution to the last mile. In this value chain, access to finance plays a critical role in unlocking growth potential for (solar) start-ups. We support institutions that provide innovative finance to the 'missing middle' and local companies, as a holistic approach to accelerate energy access. We also support the development of market ecosystems where lighting becomes a part of economic and livelihood stimulation.

Projects in this category will now fall under the 'Empowering entrepreneurs pillar. These projects can get support through various means. Recoverable grants are provided to support social enterprises with working capital or bridge funding. Recoverable grants are also provided to like-minded organizations (venture builders) supporting the growth of local renewable energy players in developing countries, either with investment or loan support. Grants are given to support youth and women's capacity building and skilling.

Empowering entrepreneurs

Capacity building

Uganda – ENVenture

In Uganda, where more than 80 percent of the population lives in rural areas, the lack of access to energy is a major impediment to economic and social empowerment.

Energy poverty in Uganda disproportionately affects women, who often spend hours each day collecting firewood, cooking on open fires, and using kerosene lamps for lighting. This not only puts their health at risk due to exposure to smoke and other pollutants, but it also limits their ability to participate in education, earn a living, and engage in other productive activities, while cutting down trees for firewood is a climate disaster.

Since 2019 we have been supporting ENVenture. ENVenture is a non-profit organization that is dedicated to improving

access to clean energy and enhancing the livelihoods of underserved communities in Uganda. The organization works to achieve these goals by providing access to financing and business support services to Community-Based Organizations (CBOs). The CBOs sell and distribute clean energy products such as efficient and clean cookstoves, solar lamps, and water filters.

Through its work, EnVenture is helping to improve health, reduce carbon emissions, and build resilience and awareness of the power of sustainable energy.

The Signify Foundation supported ENVenture with a grant for skilling and capacity building of the CBOs that they work with, which are more than 100 across the country. These CBOs receive coaching and training on business hard and soft

skills such as bookkeeping, marketing and customer care services.

The end-customers involved in Village Savings and Loan Associations (VSLAs) have repeatedly stated that they have increased their financial savings due to lower energy costs, after purchasing the products distributed through the ENVenture network.

Learnings

- There is a strong need for transport for the CBOs to be able to reach the rural and remote villages without losing all profit margins made to transport costs.
- ENVenture developed the ENVision app, allowing CBOs to capture their sales, stock levels and do bookkeeping. Also ENVenture can communicate with their CBOs across Uganda, while capturing data from the CBOs that they can use for further funding. Involving digital technology within such models can bring significant benefits if implemented correctly.

Impact

- The livelihood activities of the families purchasing the solar lights from ENVenture are enhanced.
- Watch a short video of the impact ENVenture is making in Uganda by scanning or clicking on the QR code.



Suzan in front of her own CBO Suzan Foundation. She gives young single mothers a chance to make their own living



A shopowner in Abuja, Nigeria, in front of his Winock solar powered shop – Charm Impact

Empowering entrepreneurs Working capital

Abuja, Nigeria – Winock, through Charm Impact

The Signify Foundation also funds venture builders that focus on enabling access to clean and affordable energy in the last mile. One of these companies is Charm Impact.

Since 2021 we have provided Charm with a first loss grant facility, to support a blended finance lending model that catalyzes the investment in five loans to early-stage local companies in Sub-Saharan Africa. Last year's Annual Report featured a start-up in Malawi, this year we are featuring their portfolio company Winock.

Winock is a solar enterprise that enables access to solar energy to micro businesses in Abuja, the capital city of Nigeria, home to over 1.5 million people. With the recoverable grant that Charm loaned to Winock they have been able to install

'Lease-to-own' solar connections to 2,300 businesses in 2022, of which 53% are women owned. This has not only enabled access to light, but reduced 29,37 tons of CO2 emissions, eliminated petroleum run generator sets, reduced noise pollution, decreased the exposure to poisonous fumes and slowed the environmental degradation.

Winock is now working on optimizing its business model to become completely self-sustainable. Challenges they face to get there include infrastructure, government regulations, community cooperation, political insecurity, and access to finance. They are positive nonetheless and committed to achieving a positive impact for the advancement of the African continent.

Learnings

- Nigeria is a tough environment to operate in. Social enterprises require sustainable capital to solve existing problems in the communities.
- Due to the volatility of the environment it is important that investors and loan providers are patient to give the runway small enterprises need.
- Effective financial management is very important.

Impact

- The micro businesses benefit during the day from the lighting installed by being able to display their offering better to their clients, and opening times can be extended at night increasing turnover.
- Reductions in costs and environmental damage due to the replacement of traditional fueled generators.
- 31,000 lives lit through Charm Impact in 2022.



Empowering entrepreneurs
Capacity building

Tanzania, Kenya - SolarSister

The NGO SolarSister works in East Africa on the last-mile distribution of energy efficient products such as clean cookstoves, solar lanterns, and water filters. The Signify Foundation supported SolarSister with a grant to strengthen their training and capacity building.



Empowering entrepreneurs
Capacity building

Senegal - ElleSolaire

The Signify Foundation has given ElleSolaire a grant to train women in Senegal to become clean energy entrepreneurs and reach rural villages through their Village Savings & Loans Associations (VSLA) group network. A small loan was provided to purchase stock for the women to sell to these VSLAs.

Financial Statements

Balance sheet as at December 31 (in euros after result appropriation)

	Note	2021	2022
Current assets			
Cash and cash equivalents	1	2,167,468	2,709,959
Total current assets		2,167,468	2,709,959
Total assets		2,167,468	2,709,959
Equity			
Other reserves	2	1,156,137	2,187,782
Total equity		1,156,137	2,187,782
Current liabilities			
Accrued expenses	3	1,011,330	522,177
Total current liabilities		1,011,330	522,177
Total equity and liabilities		2,167,468	2,709,959

Statement of contributions and expenses (in euros)

	Note	2021	2022
Contribution from Signify	4	1,800,000	1,824,275
Other contributions		37,029	4,268
Total contributions		1,837,029	1,828,543
Donations	5	(2,077,776)	(788,880)
Other expenses	6	(5,435)	0
Financial expenses	7	(2,678)	(8,018)
Total expenses		(2,085,889)	(796,898)
Result		(248,860)	1,031,645

Notes to the Balance sheet and the Statement of contributions and expenses

General

Stichting Signify Foundation is registered at the Dutch Chamber of Commerce with number 69001464 as a foundation under Dutch law. Its legal address is Basisweg 10, 1034 AP Amsterdam.

Financial reporting period

These financial statements cover the year 2022 which ended December 31, 2022. The comparative figures cover the year 2021, which started on January 1, 2021 and ended December 31, 2021.

Basis of preparation

The financial statements have been prepared in accordance with the Guideline for annual reporting 640 'Non-profit organizations' of the Dutch Accounting Standards Board (RJ640).

Going concern

These financial statements have been prepared on the basis of the going concern assumption.

Basis of measurement

The financial statements have been prepared on a historical cost basis. Unless stated otherwise, assets and liabilities are shown at nominal value. Valuation takes place at nominal value less any provision deemed necessary.

Accounting policies

General

An asset is recognized in the balance sheet when it is probable that the expected future economic benefits that are attributable to the asset will flow to the entity and the cost of the asset can be measured reliably. A liability is recognized in the balance sheet when it is expected to result in an outflow of the entity's own resources and the amount of the liability can be measured reliably. Contributions are recognized in the Statement of contributions and expenses when the amount can be determined in a reliable manner and collection of the related contribution to be received is probable. Contributions and expenses are allocated to the period to which they relate.

Use of estimates

The preparation of the financial statements requires the Board of Signify Foundation to make judgments, estimates and assumptions that affect the application of accounting principles and reported amounts of assets, liabilities and contributions and expenses. Actual results may differ from these estimates. The estimates and underlying assumptions are continuously reviewed. The impact of revised estimates is reflected in the period in which the estimate is revised.

Functional and presentation currency

The financial statements are presented in euros, which is the Foundation's functional currency, and have been rounded to the nearest euros. Transactions denominated in foreign currency are translated into euros at the exchange rate applying on the transaction date. Exchange differences resulting from the settlement of monetary items or resulting from the translation of monetary items denominated in foreign currency are recognized in the Statement of contributions and expenses in the period in which they arise. Due to rounding, amounts may not add up to totals provided.

Receivables

Receivables are measured at initial recognition at fair value. After initial recognition, the assets are measured at amortized cost using the effective interest method, less a value allowance. The allowance is determined by individual assessment of the receivables by applying the expected loss model, which utilizes historical collection data and forward-looking estimates.

Current liabilities

At initial recognition, accrued expenses are measured at fair value. After initial recognition, the liabilities are measured at amortized cost using the effective interest method.

Other reserves

Other reserves consist of the results of the previous years as well as the current year.

1 Bright Dada programs are figured in the 2020 annual report.

Notes to the Balance sheet

1. Cash and cash equivalents

Cash and cash equivalents relate to the current account balances and are available without restrictions.

2. Equity

The movements in Other reserves are shown below:

	2021	2022
Opening balance	1,404,997	1,156,137
Result	(248,860)	1,031,645
Other reserves	1,156,137	2,187,782

3. Accrued expenses

Accrued expenses reflect the amounts related to projects that have been approved by the Board and communicated to the beneficiary but for which payments will materialize in the following year(s).

2 Switch on Solar program is figured in the 2019 annual report.

Accruals related to:	2021	2022
Community lighting	750,333	341,917
Competency build-up	184,872	180,260
Working capital	56,125	0
Others	20,000	0
Total	1,011,330	522,177

The accruals are mainly due to the Foundation's payment approach to disperse most donations in tranches based on milestones.

The accruals for Community lighting projects in 2022 of EUR 341,917 (2021: EUR 750,333) related to projects in sub-Saharan Africa, Middle East, and Latin America, amongst other regions.

The accruals for Competency build-up projects in 2022 totals EUR 180,260 (2021: EUR 184,872). These mainly relate to multi-year programs in sub-Saharan Africa, for instance, Bright Dada programs¹ in Kenya, Uganda, and Switch on Solar program in Uganda².

Notes to the Statement of contributions and expenses

4. Contributions

In 2022, the Signify Foundation received a contribution of EUR 1,824,275 from Signify, slightly higher than the amount received in 2021 (EUR 1,800,000). This amount included the additional EUR 800,000 funding for the immediate relief and medium-long term development support to Ukraine and neighboring countries. The funding was made in four installments received in April, July, October and November. In November 2022, Signify agreed to contribute to Signify Foundation an amount of EUR 1,000,000 in 2023.

5. Donations

Donations are recognized as an expense in the year the commitment has been approved by the Board and communicated to the beneficiary of the donation. Included in the donations of 2022 is an amount of EUR 163,000 that potentially can

3 Disaster relief projects in 2022 mainly pertain to projects for Ukraine. Other lighting projects were

be recovered by Signify Foundation during 2023 and 2024 if the beneficiaries are able to meet certain conditions.

In 2021, an amount of EUR 788,445 was included in donations that could potentially be recovered by Signify Foundation. In 2022, an amount of EUR 224,468 was repaid to the Foundation related to recoverable donations issued in previous years after the beneficiaries were able to meet certain conditions.

Donations related to:	2021	2022
Community lighting	781,554	270,397
Disaster relief ³	0	451,191
Competency build-up	485,979	20,712
Working capital	484,756	47,790
Others	325,487	(1,210)
Total	2,077,776	788,880

implemented for (internally) displaced people, and essential services. Please see 'Disaster Relief'.

Donations fall within a new classification within the Foundation's projects. The category 'Others' relates to projects or costs outside of the classifications which nonetheless support the overall mission. These are, for example, costs for project evaluations, impact studies, and guideline creation for humanitarian aid agencies.

6. Other expenses

No Other expenses in 2022 were incurred. In 2021, an amount of EUR 5,435 relate to consultancy and travel costs.

7. Financial expenses

Financial expenses in 2022 of EUR 8,018 (2021: EUR 2,678) relate to bank and interest costs and the cost of foreign currency conversion.

8. Personnel

In 2022 and 2021, Signify Foundation employed one part-time contingent worker based in Uganda. Signify Foundation's operational team consists of employees of Signify who are seconded to the Foundation. Their salaries and expenses are paid by Signify. The Board members of Signify Foundation receive no remuneration for their duties, any expenses incurred are reimbursed by the Foundation.

Signify Foundation also receives human resource functional support from Signify, mainly in the areas of legal, finance, internal audit, communications, in-country CSR champions and skill-based volunteers on specific projects.

9. Subsequent events

There are no subsequent events to report.
May 15, 2023

Board of Management
Harry Verhaar
Pieter de Haan
Stanley Anyetei
Maloe de Reuver



George, in front of the Community Based Organisation he works for in Kayuna district, Uganda

The 2022 operation of the Foundation has been made possible by:

Aninda Eijkens
Celia Wan-Sze Yiu
Lea Richter
Lou Van Reemst
Merve Atus
Tarini Basin
Yue Cui

Special thanks to:
Paul Sloekers
Rakesh Kumar Singh

 signify foundation

Colophon

Do you believe your organization or project would fit nicely into this annual report? Or do you want to know more specifics about collaborating with the Signify Foundation? Please get in touch with us through: signify.foundation@signify.com

Signify Foundation
Basisweg 10, 1043 AP Amsterdam
The Netherlands
RSIN number: 857684553

Link to our website
www.signify.com/global/our-company/signify-foundation

Link to our LinkedIn
www.linkedin.com/showcase/25170191/

Realisation
©Signify Foundation 2023
Special thanks to:
Annie Macfarlane
Dwight Alexis Agosila & Sharon Underwood