

PHILIPS

StoreSet Evo

Retail lighting

StoreSet Evo

High-performance, ultra-flexible lighting solutions for more sustainable retail spaces





Contents

The next level of retail lighting excellence

Introducing the new Philips StoreSet Evo: your lighting choice for brighter, more efficient and future-ready retail spaces

Experience the future of retail lighting with Philips StoreSet Evo. Enjoy the widest choice of optics and best-in-class light output for CRI90 recipes. Custom optics provide energy-efficient lighting where it's needed, while the sleek, modern design blends seamlessly into your space. The innovative central suspension and single-point track rotation system provide complete installation and maintenance flexibility. Secure your lighting investment for the future: the maintainable driver ensures that your luminaire will be ready for tomorrow's demands, and even offers the option to upgrade with wireless drivers.

Learn more and upgrade your store with Philips StoreSet Evo, the luminaire that delivers high-performance, ultra-flexible lighting solutions for more sustainable retail spaces.

Slim design, solid benefits

Unobtrusive, contemporary design that blends in with any store interior

Excellent light quality with high efficiency and various LED flavors

Single-point central track suspension for flexible installation and repositioning

Future-proof investment thanks to serviceable and upgradeable driver

Maximum flexibility: products for on-track, trunking and recessed installation available

Meets lighting for circularity criteria for your sustainable goals



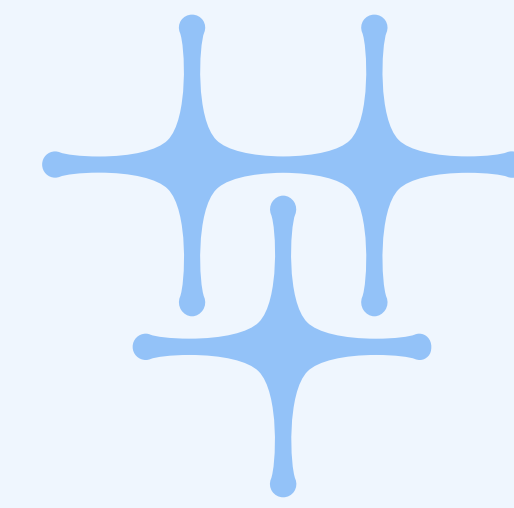
Excellent light for outstanding results

Light quality, color, consistency and uniformity play an important role in creating an inviting and attractive store atmosphere. Our range of application-specific OptiSuit™ optics and our eight beam options are designed to meet the requirements and dimensions of different retail spaces.



Light that's easy on your eyes

The precisely-designed OptiSuit lenses provide comfortable light for more shopper eye comfort. They deliver and direct the light in the most efficient way possible, while maintaining consistent qualitative color parameters.



Bring out the best in merchandise

StoreSet Evo is available in seven² different LED flavors, including CRI 90+ flavors that bring out the best in every color and texture.

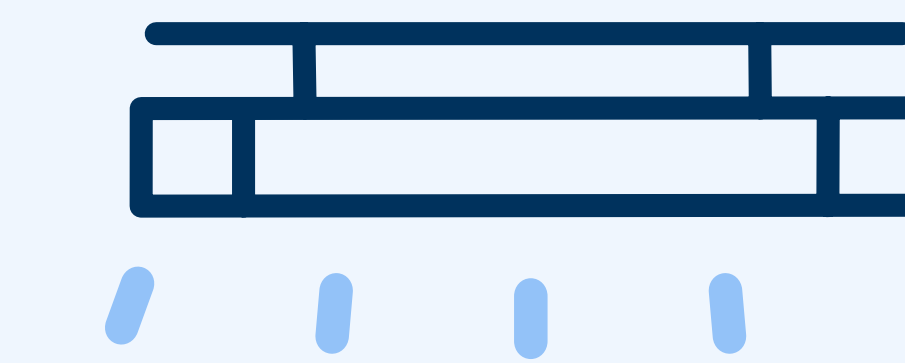
Standard CRI 90+ flavors

930: Warm colors and soft whites create a gentle, welcoming atmosphere.

940: Stronger whites and a cooler ambience (often used for sports retail).

PremiumWhite CRI 90+ flavors

930 and 935: The new benchmark in retail lighting, for more vibrant whites and a warm ambience — with minimal compromise on energy savings!



High efficiency, high savings

StoreSet Evo is available in Standard (N), Extra (XA) and High Efficiency (HE) versions.

Using a smart combination of LED, driver and OptiSuit optics, the High Efficiency version consumes 12 to 15% less power than Standard StoreSet Evo products for the same luminous intensity and promises very high light output and energy savings.³

The XA versions even offer an additional 8 to 10% energy savings and a longer lifetime (50,000 hours at L95) compared to High Efficiency StoreSet Evo versions.⁴

i Select HE (High Efficiency) or XA (Extra) in the product configurator

The StoreSet Evo range offers the right solution for every retail need. Use our product configurator to find your perfect luminaire.

¹ Designed for the comfort of your eyes. Visit www.philips.com/eyecomfort for flicker, strobe and other EyeComfort criteria and product details.

² 830, 835, 840, 930, 940, PW930, PW935 available. 950 and 965 coming in Feb 2024.

³ Based on comparison of Philips StoreSet Evo SM515T 66S/840 with Philips StoreSet Evo SM515T 66S/840 HE.

⁴ Based on comparison of Philips StoreSet Evo SM515T 66S/840 HE with Philips StoreSet Evo SM515T 66S/840 XA.

Enhance any product with the perfect LED flavor

No online shopping experience can compete with the sensory pleasure of a bright and inviting store. The vibrant colors, the different textures and — in the case of food — the aromas are impossible to replicate in a virtual environment. Our wide range of LED colors show off all products and store types to their best advantage.



Standard colors

830 Warm White: ideal for wine, baked goods, fruit, packed meat

835 Warm-Neutral White: suitable for packed products and pasta

840 Neutral White: for canned food, detergents and utensils



Enhanced colors

930 Warm White (CRI>90): ideal for budget textiles (colored clothing, bedding, etc.)

940 Neutral White (CRI>90): best suited for budget sportswear and footwear



Premium whites

The new benchmark in retail, providing better white perception and balanced color saturation with minimal compromise on energy savings.

PW930 Premium White (CRI>90): Best suited for high-end categories and premium brands, as it creates a warm light that is inviting and exudes comfort.

PW935 Premium White (CRI>90): Ideal for a modern and elegant look, with a fresh and lively feel that blends well with earthy tones such as red, orange and yellow.



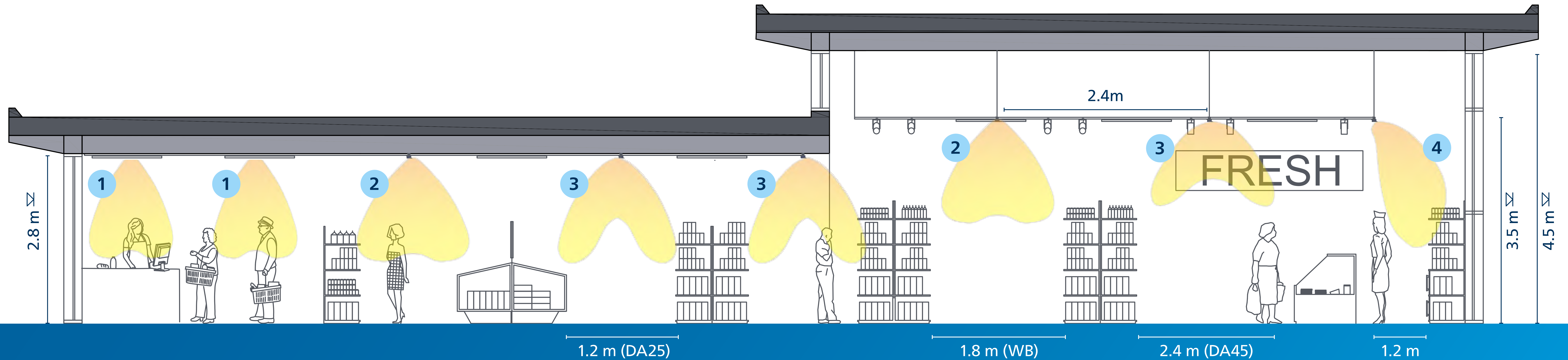
Available from February 2024

Enhanced cool whites

950 Cold White: ideal for summer and winter sports equipment

965 Daylight White: best choice for white goods and electronics

The right beam for every demand



1 Wide beam (WB-OC)

Optimizing eye comfort above workstations in back offices, control rooms and checkout areas. This reduces the risk of visual disturbance and headaches, and improves comfort and productivity.

2 Wide beam (WB)

Offering maximal flexibility by providing illumination in a consistent and effective way. Ideal for general illumination of sales areas and different aisle widths and heights.

3 Double asymmetric beam (DA)

Optimized for aisle lighting and illumination of shelves to highlight products on sale. Different beam widths support a variety of possible lighting needs, aisle widths and installation heights.

DA25N
(Double Asymmetric 25° Narrow)

For illumination of small-to medium-sized aisles and strong accentuation of shelves.

DA25W
(Double Asymmetric 25° Wide)

For illumination of small-to medium-sized aisles, and accentuation of shelves.

DA35W
(Double Asymmetric 35° Wide)

For illumination of medium-sized to wide aisles, and accentuation of shelves.

DA45
(Double Asymmetric 45°)

For illumination of very wide aisles or open areas.

Wide beam options provide slightly more light on the floor. Narrow beam option steers the light more towards the shelves.

4 Asymmetric Beam (A)

Periphery lighting to illuminate walls and banners, providing a more spacious feeling within the store.

Download photometric files: Click the button to go to the Philips product selector and choose "Surface mounted" — "StoreSet".

Three mounting options for maximum system flexibility



Installation on track

Easy integration into existing track systems.

i Select SM515T in the product configurator



Installation on Philips Maxos fusion trunking rails

The Maxos fusion trunking system is the flexible, future-proof backbone for any store. Thanks to the combination of the trunk with the family of fixtures — including spots and non-linear — you can efficiently and in a non-disruptive way update any store lighting to match new concepts.

i Select SM515S in the product configurator



Installation into recessed ceilings

Available for two recessed ceiling systems (grid 600 mm or 625 mm).

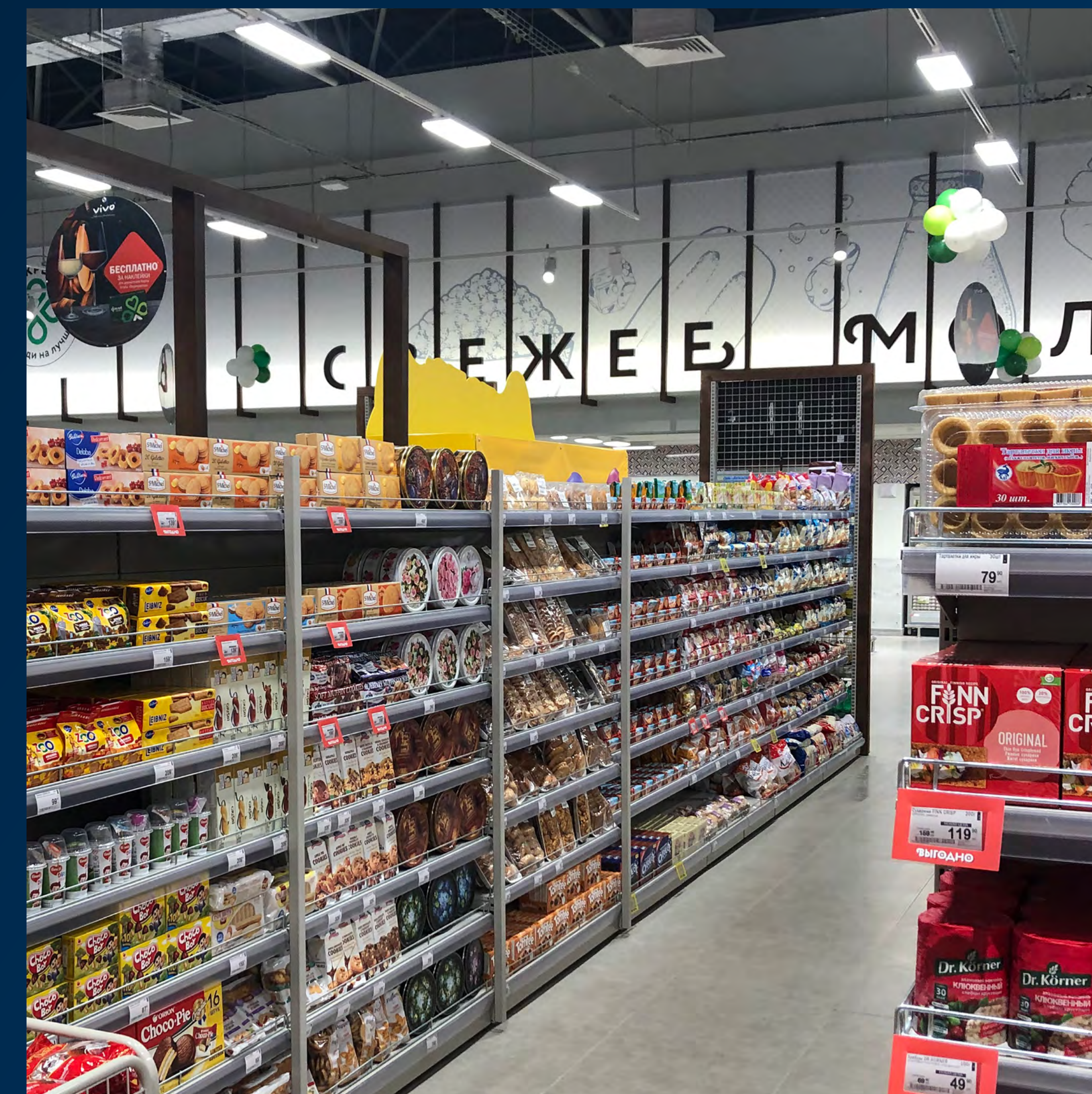
i Select RC516B/RC517B in the product configurator

The luminaire that fits every store layout

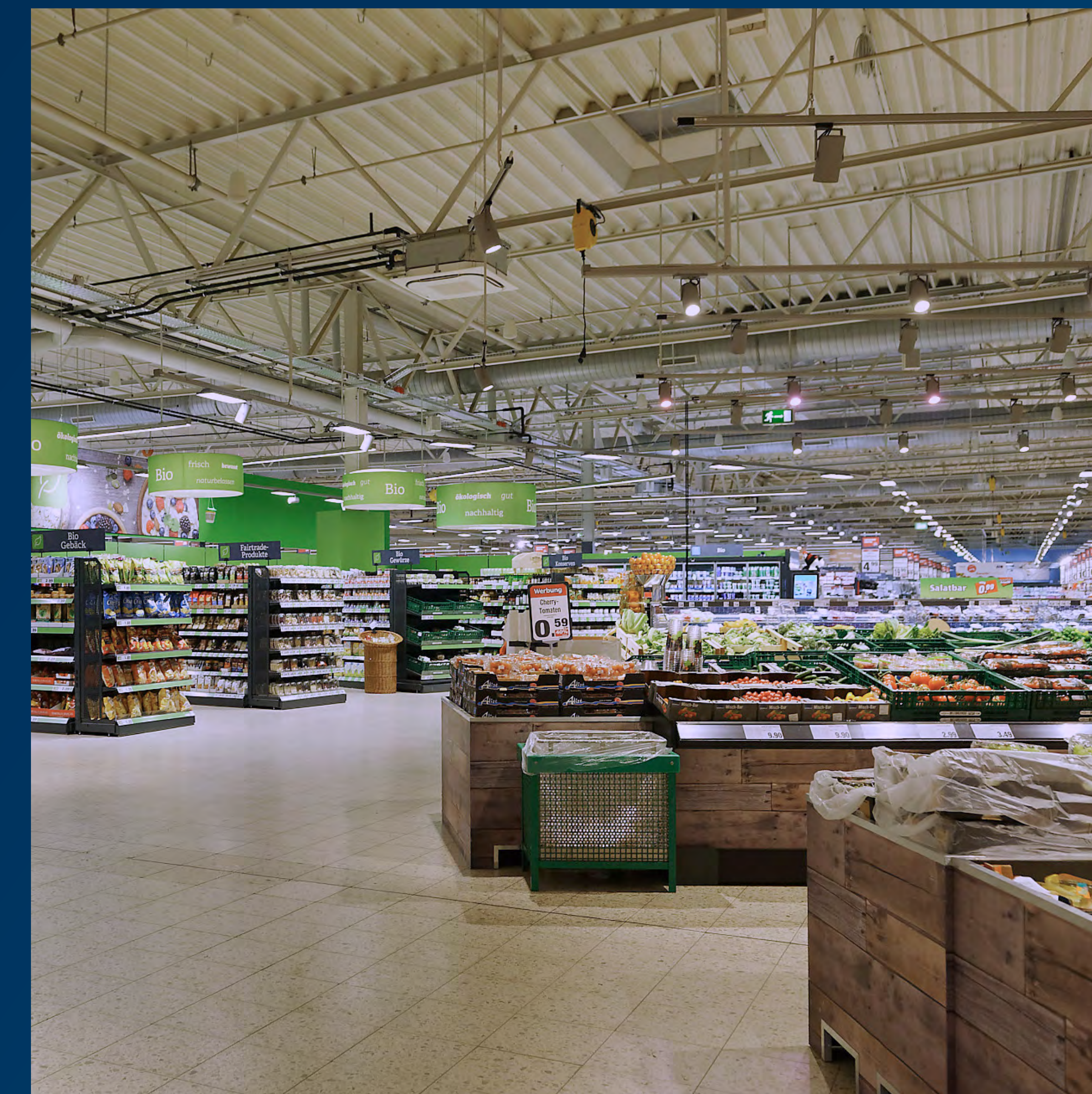
Thanks to its versatility, Philips StoreSet Evo can be easily integrated into any store format by reusing existing tracks, trunking systems or ceiling fixtures or by adding new ones. Let your lighting concept enhance your store — with the perfect combination of general and accent lighting.



StoreSet Evo WB-OC above checkout areas reduces the risk of errors caused by distracting glare and improves comfort and productivity.



StoreSet Evo as main building block of a lighting concept, creating a uniform lighting effect and accents on the shelves.



StoreSet Evo combined with projectors for accent lighting in the open sales area, creating a high-contrast but balanced lighting effect.



StoreSet Evo used to illuminate the periphery, creating a spacious store atmosphere.

Designed for a circular economy

Our purpose is to unlock light's extraordinary potential for a brighter future and a better world. Helping to further develop circular economy is a good place to start. Our lighting for circularity products, services and systems can help to reduce the environmental impact and enhance store experience at the same time.

Welcome to lighting for circularity

Products

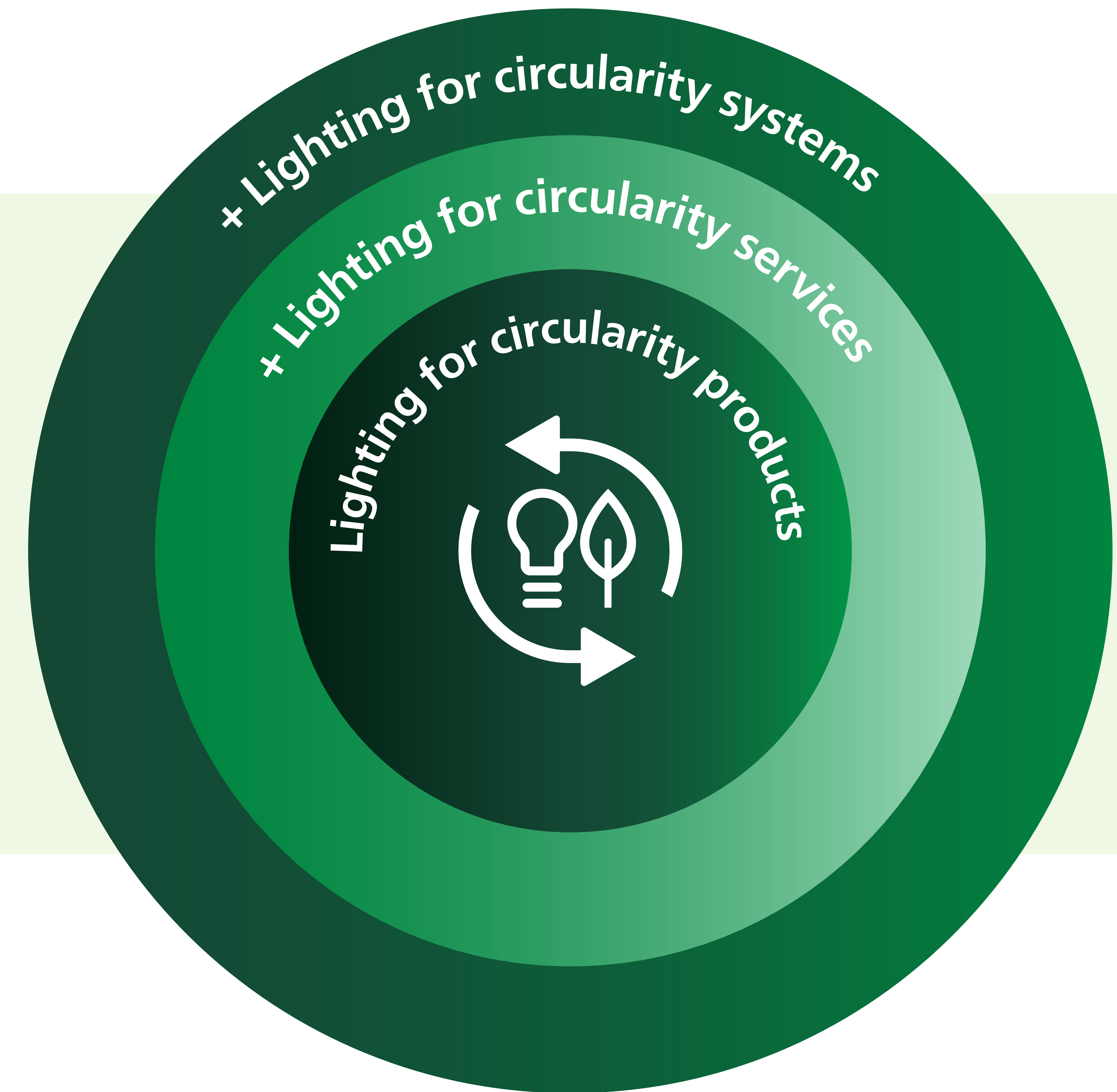
- Luminaires and components use renewable materials
- High energy efficiency and long lifetime
- Products are easy to maintain, repair, upgrade, and replace

Services

- Service packages ensure sustainable investments and operations
- Customized lighting solutions in line with clear key performance indicators
- Include everything from design and build, to operation and maintenance

Smart systems

- Smart lighting systems can significantly improve the environmental performance of your lighting
- Optimize energy savings with the energy dashboard
- Remote monitoring of lighting assets



Philips StoreSet Evo meets the five criteria of lighting for circularity

Energy efficiency and extended lifetime

- High-efficiency light engine with a luminous efficiency of up to 160 lm/W and extra efficiency (XA) with up to 180 lm/W
([i](#) Select HE or XA in the product configurator)
- OptiSuit™ lenses provide optimal light distribution, reducing the number of luminaires and overall installed power
- Long lifetime of up to 100,000 hours (L85) with XA versions reduces the need to replace luminaires or components

Connectable

- Serviceable drivers can connect StoreSet Evo to smart lighting systems, both wired (e.g. DALI) and wireless (e.g. Interact)
- The Interact smart lighting system enables features like scene management, indoor navigation and grouping

Upgradeable

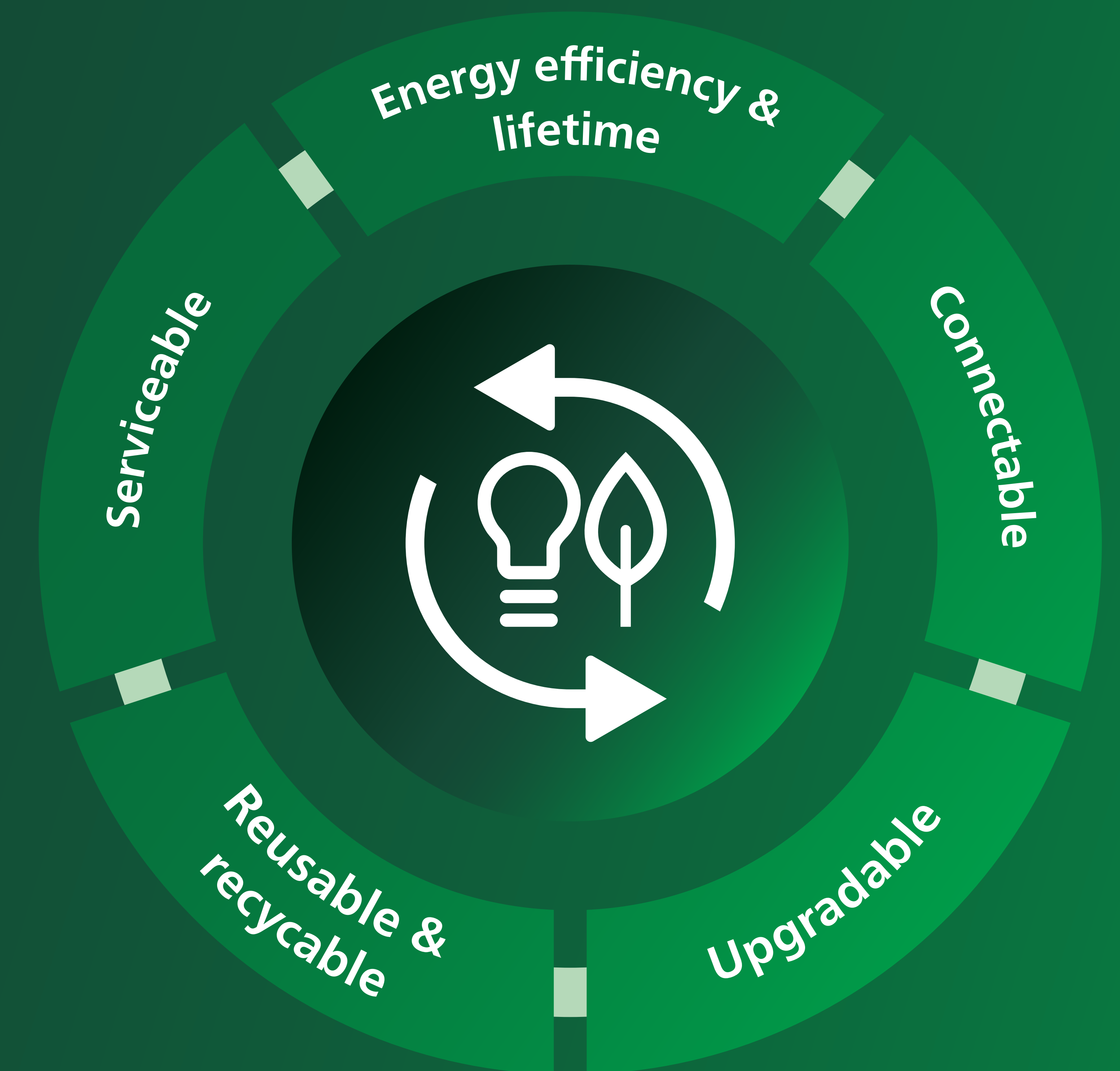
- Upgradeable driver and light engine
- Flexible and expandable system
- Simply add new luminaires, drivers, or sensors to upgrade specific functions or the entire system

Reusable and recyclable

- Designed for lowest weight and lowest volume to limit transportation CO₂ emissions
- Easy to dismantle and recycle
- No glue, no potted drivers

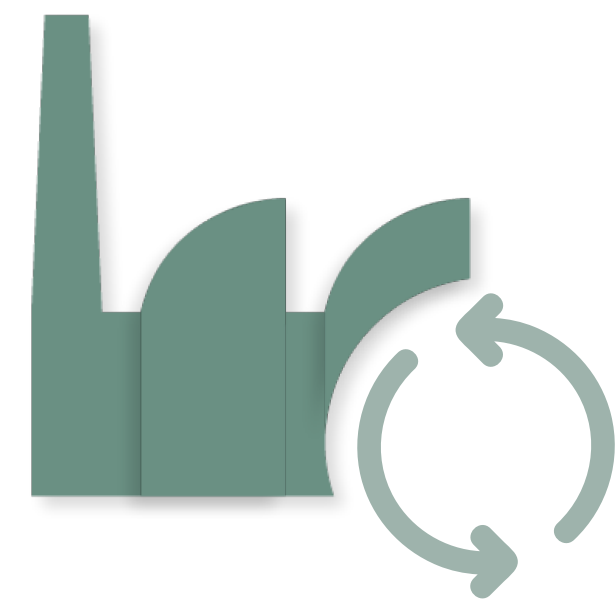
Serviceable

- Easy to install, service, maintain, repair and replace thanks to the QR-based service tag identification system
- Each luminaire and driver is uniquely identifiable



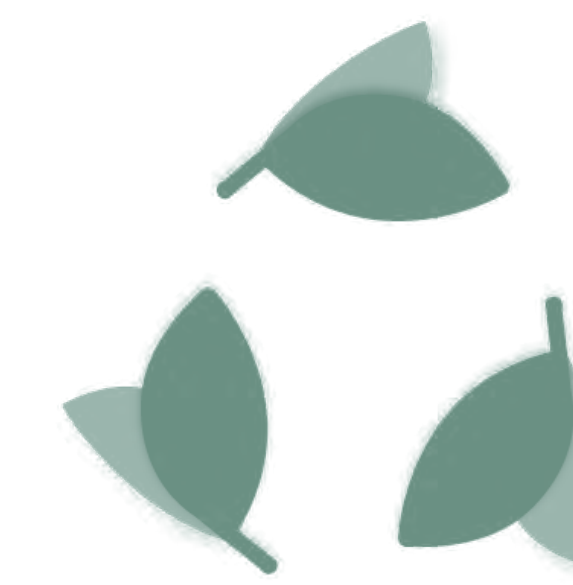
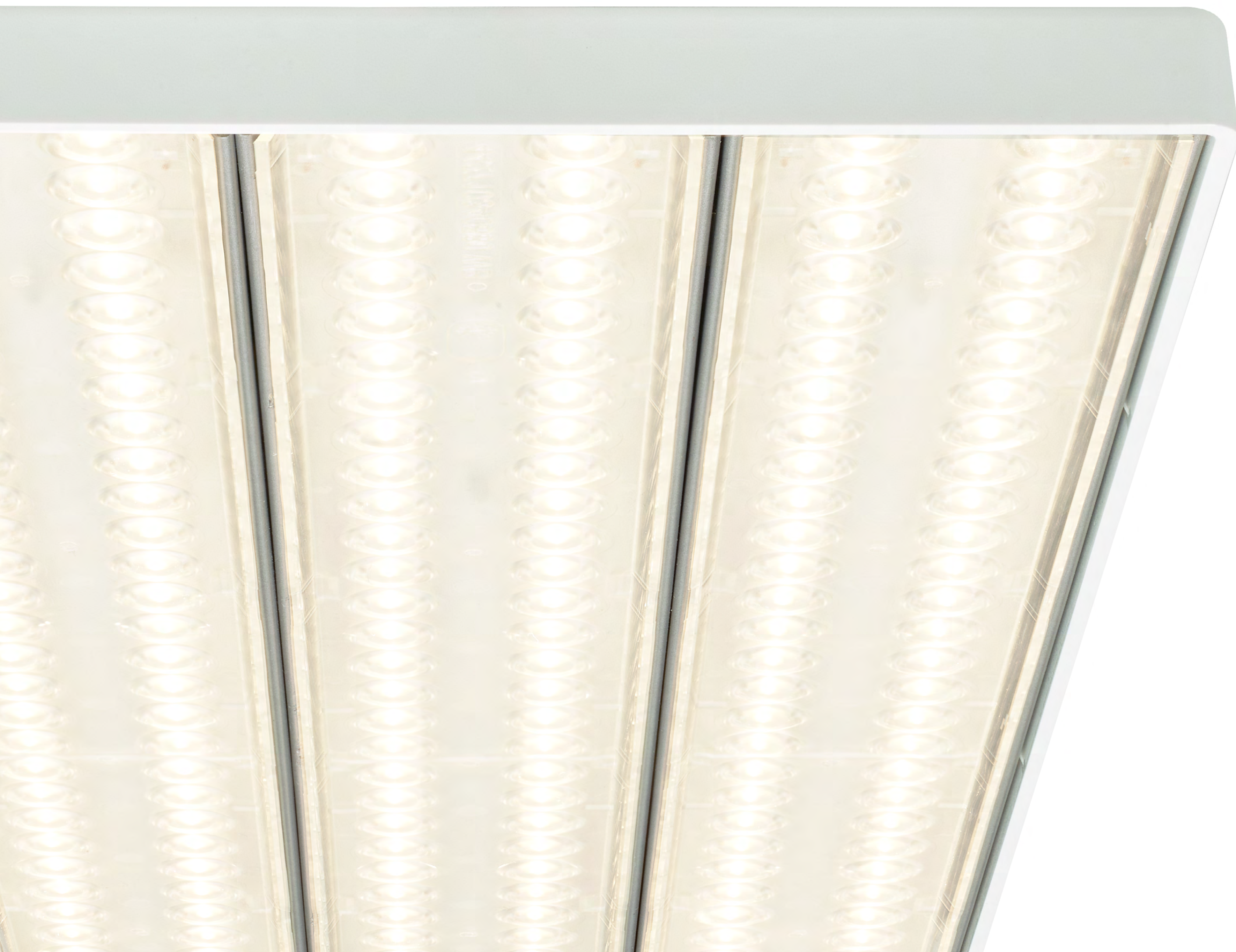
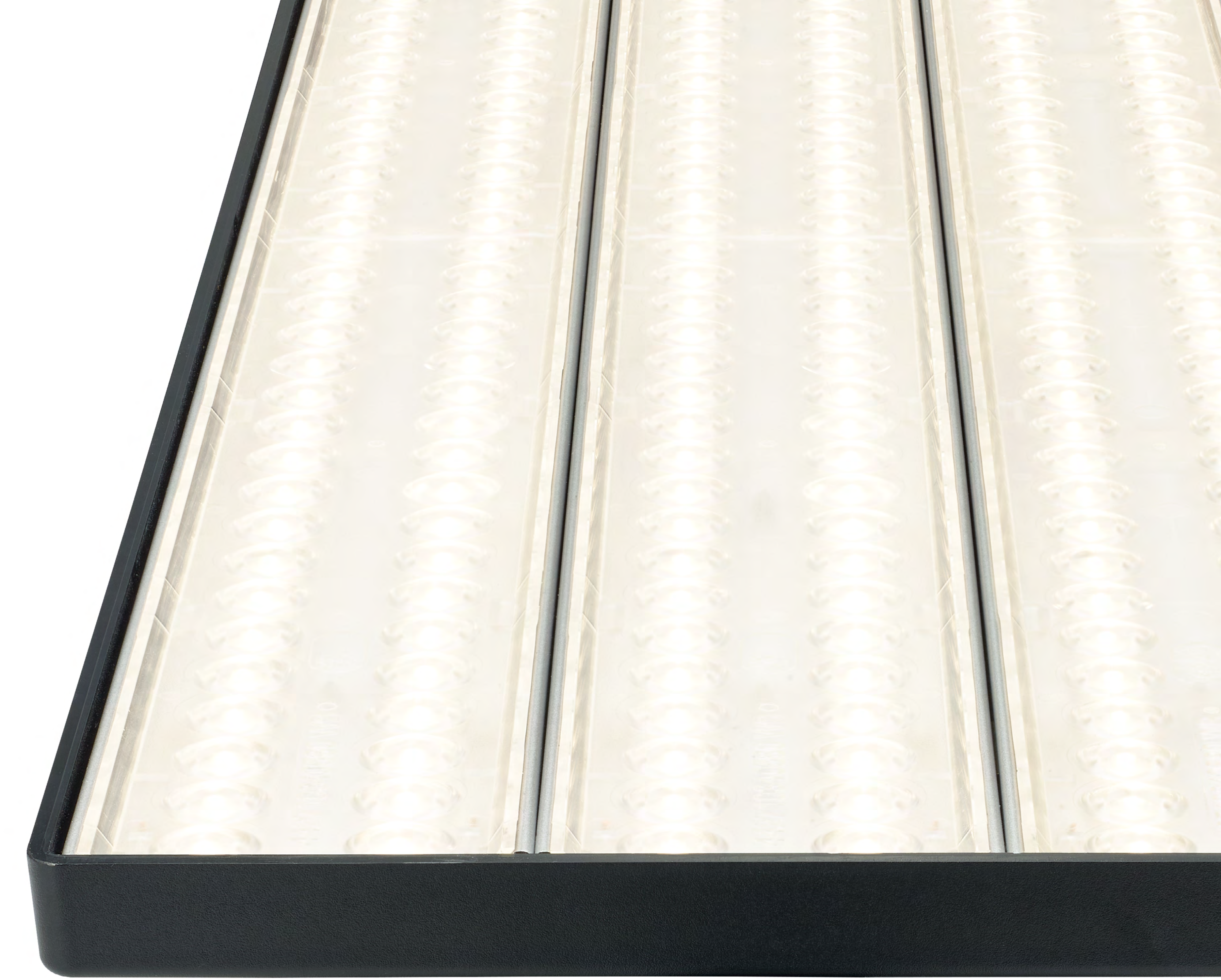
Sustainability highlights

Take a big step towards your sustainability goals and show corporate responsibility with StoreSet Evo — designed for a brighter future



Post-industrial recycled plastics

The StoreSet Evo housing and covers are made from a blend of virgin and partially recycled plastics. These plastics are easily recycled through mechanical recycling with minimal energy input, avoiding incineration or disposal in landfills.



Optional: Bio-circular plastics

Innovation in sustainability is something we take very seriously. The entire housing of StoreSet Evo can be made from bio-circular polycarbonate. This means that the plastics we use come from renewable resources, as opposed to traditional plastics that are derived from fossil fuels. More than 68% of the source material for these plastic parts is of biological origin, using the mass balance principle.*

* Under the mass balance approach, certified sustainable raw materials enter the supply chain but are not kept physically separated from non-certified materials. While sustainability characteristics remain assigned to batches of material on a bookkeeping basis, the physical mixing of material with different sustainability characteristics and the mixing of sustainable and non-sustainable material is allowed at any stage of the supply chain.

interact



Interact

The smart lighting system Interact, together with Interact Ready Philips StoreSet Evo luminaires, can help your store look inviting and intriguing while supporting you in achieving your sustainability goals.

Multisite management

Remotely monitor, manage and control the connected lighting across all areas of your store or a chain of stores through a single Interact dashboard.

- Use real-time data insights to operate your store more efficiently
- Improve store layout and provide memorable store experiences

i Select DIA (DALI dimming, Interact Ready) in the product configurator

Indoor navigation

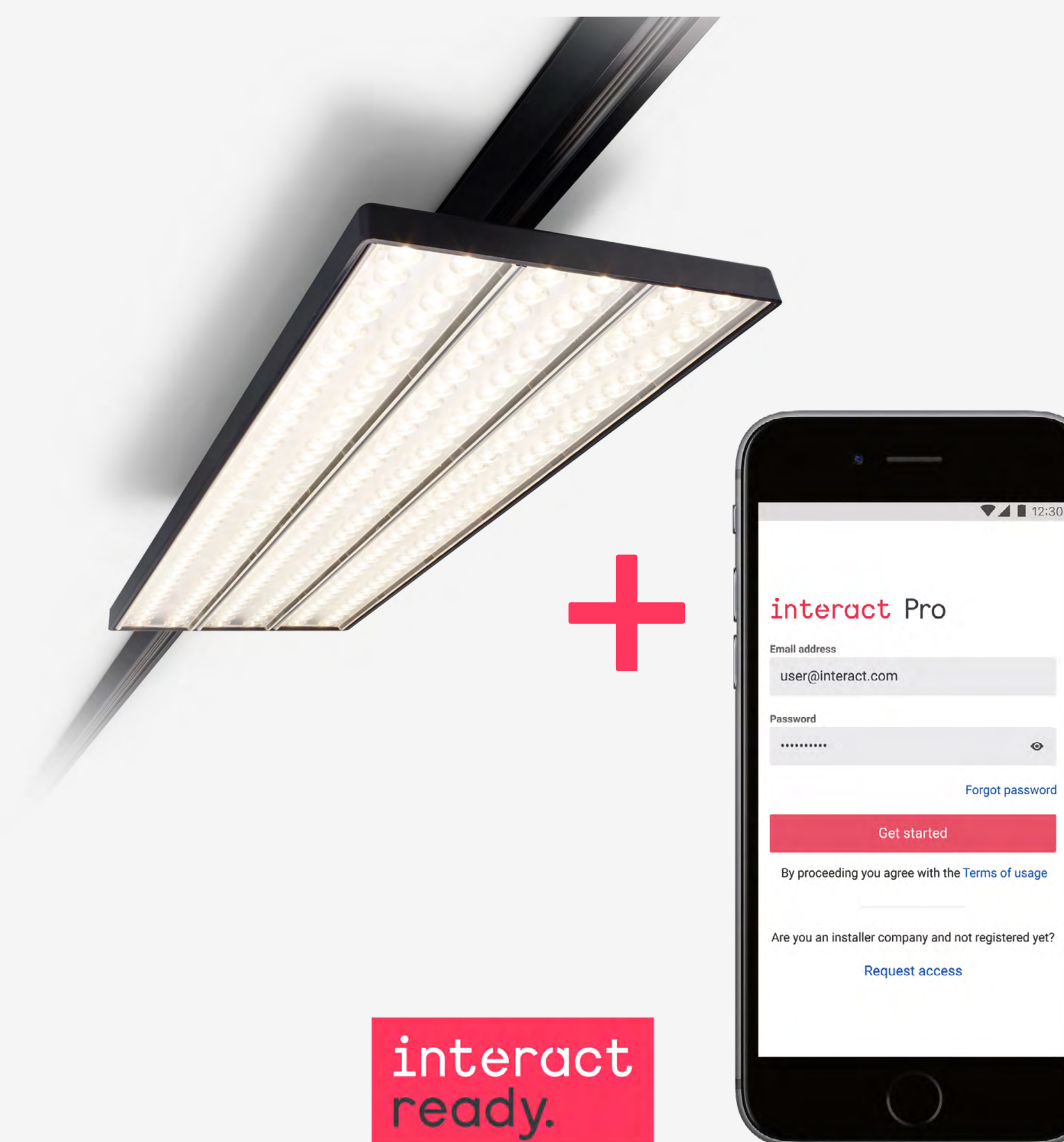
Enhance the intelligence of illuminated spaces with an "indoor GPS".

- Direct shoppers to the items on their shopping list
- Enhance the shopping experience with personalized in-store promotions
- Optimize store layouts with heat maps of in-store traffic patterns

i Select DIA-VLC (DALI dimming, Interact Ready, Visible Light Communication enabled) in the product configurator

Interact Pro

Just wireless luminaires and an app. That's all you need for a basic smart lighting system that not only provides more effective lighting and features such as smart dimming, but can also lead to impressive energy savings.



The Interact Pro system, together with wireless StoreSet Evo luminaires, enables grouping. With grouping, you can create personalized lighting schemes and dimming settings that empower you to:

- Create areas or specialty departments to optimize the customer experience
- Add extra interest to hero areas and put promotional items in the spotlight
- Create a relaxed and intimate ambience for special events

i Select WIA (Wireless driver, Interact Ready) in the product configurator

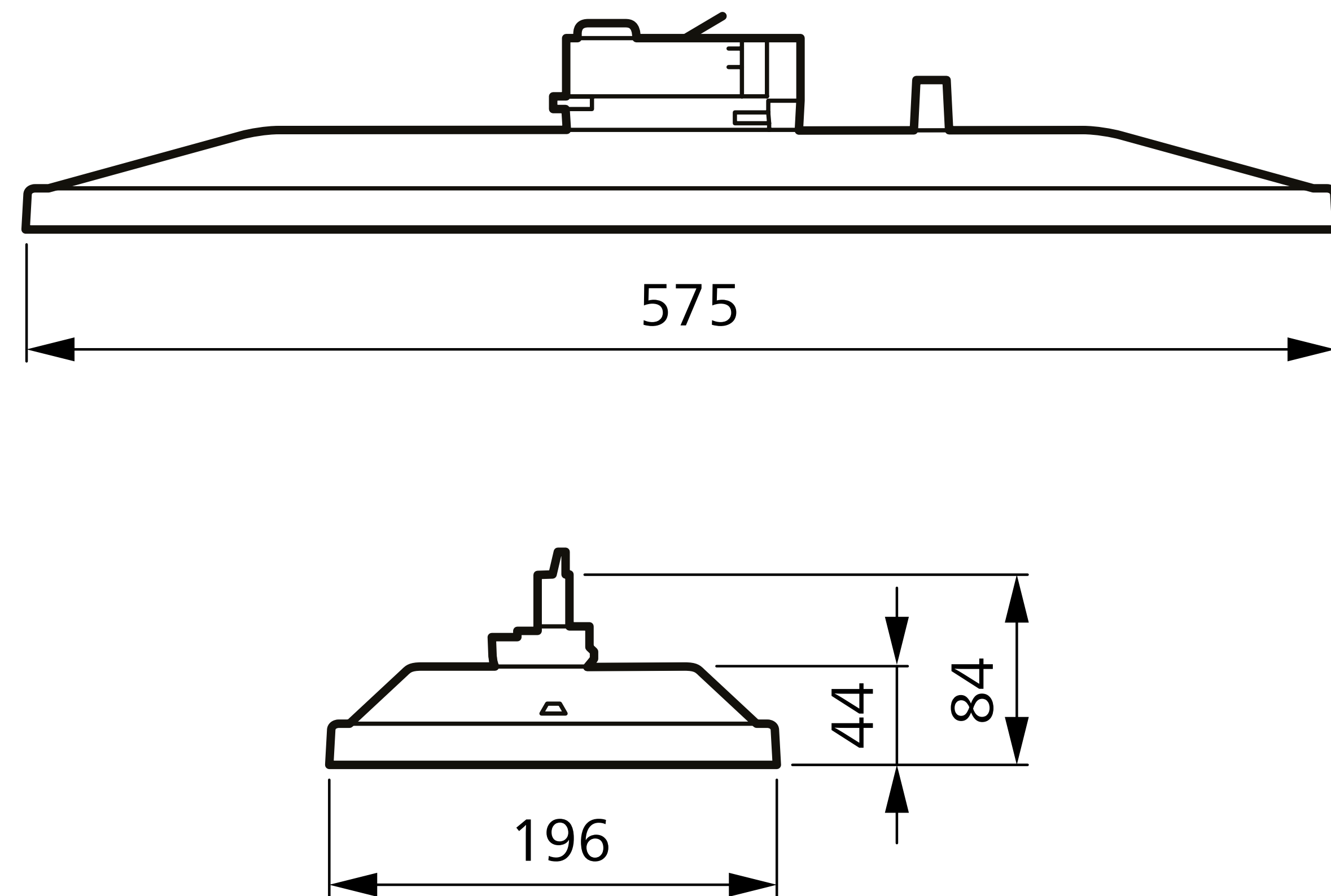
Your options with Philips StoreSet Evo

Versions	Product family	Light color	Luminous flux	Driver	Optics	Housing color	Safety device
N Standard <small>Not for 930, 940, PW930, PW935</small>	SM515T StoreSet track-mounted	830 Warm White (3000K, CRI>80)	LED66S 6,600 lm	PSU Power supply unit, non-dimming	WB Wide beam	WH White (RAL9003)	N Standard
		835 Warm-Neutral White (3500K, CRI>80)	LED80S 8,000 lm		DA25N Double asymmetrical beam 25° narrow		
XA Extra <small>Only for 830 and 840</small>	SM515S StoreSet for Maxos fusion	840 Neutral White (4000K, CRI>80)	LED90S 9,000 lm	DIA DALI dimming, Interact Ready	DA25W Double asymmetrical beam 25° wide	SI Silver/Grey (RAL9006)	SC Safety cable <small>Optional for RC516B/RC517B</small>
		930 Warm White (3000K, CRI>90) <small>Only for HE</small>			DIA-VLC DALI dimming, Interact Ready, Visible Light Communication enabled		
HE High Efficiency	RC516B StoreSet recessed 600mm	940 Neutral White (4000K, CRI>90) <small>Only for HE</small>		DIA-CLO-VLC DALI dimming, Interact Ready, Visible Light Communication enabled, constant light output	DA45 Double asymmetrical beam 45° wide	BK Black (RAL9004)	
		950 Cold White (5000K, CRI>90)			DA20 Asymmetrical beam 20°		
		965 Daylight White (6500K, CRI>90)			WB-OC Wide beam, office compliant		
		PW930 Premium White (3000K, CRI>90) <small>Only for HE</small>			MB Medium beam		
		PW935 Premium White (3500K, CRI>90) <small>Only for HE</small>					

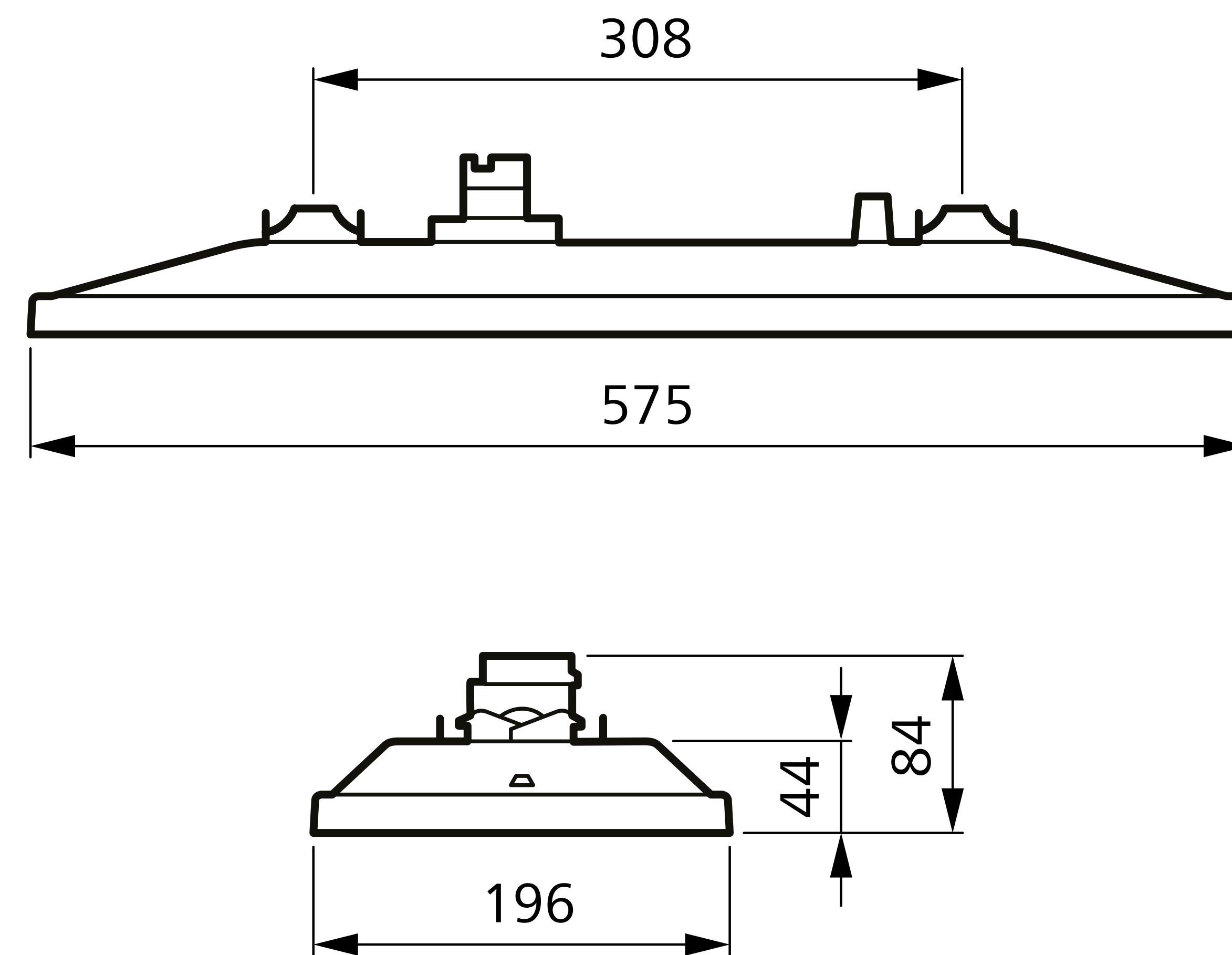
Available from Feb 2024

Product dimensions

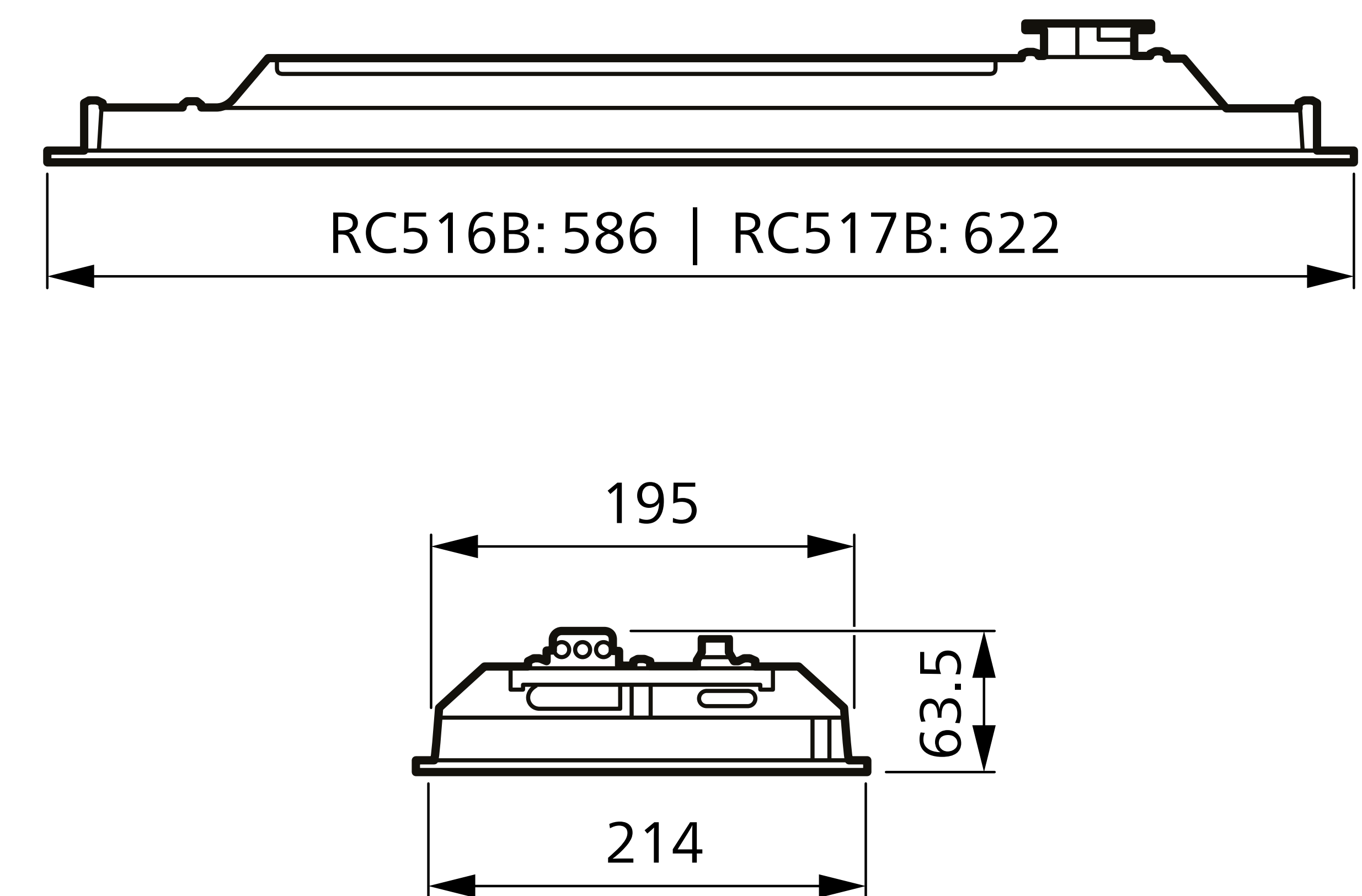
Track-mounted version
SM515T



Trunking-mounted version
SM515S



Recessed-mounted versions
RC516B/RC517B



All product dimensions are given in millimeters.



© 2023 Signify Holding. All rights reserved. The information provided herein is subject to change, without notice. Signify does not give any representation or warranty as to the accuracy or completeness of the information included herein and shall not be liable for any action in reliance thereon. The information presented in this document is not intended as any commercial offer and does not form part of any quotation or contract, unless otherwise agreed by Signify.

Philips and the Philips Shield Emblem are registered trademarks of Koninklijke Philips N.V. All other trademarks are owned by Signify Holding or their respective owners.

In-store images kindly provided by EDEKA (Marktleeburg), Perekrestok (Moscow), Carrefour (Brugge).

All technical information can be found at www.philips.com/storeset