

PHILIPS

LED lamps

Right light right way

Because the right light is everything

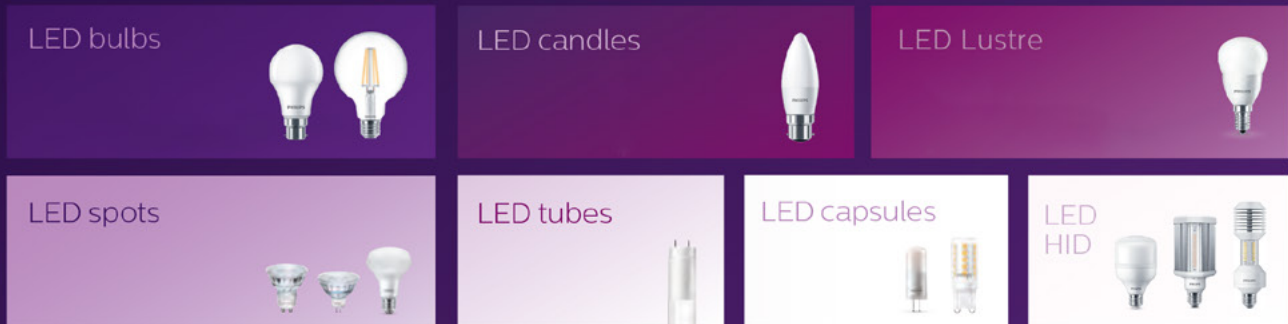


LED Lamps Catalogue 2021

**REAL
PROs**
**REAL
QUALITY**

Choosing the right light is as easy as 1, 2, 3

1. Choose a shape

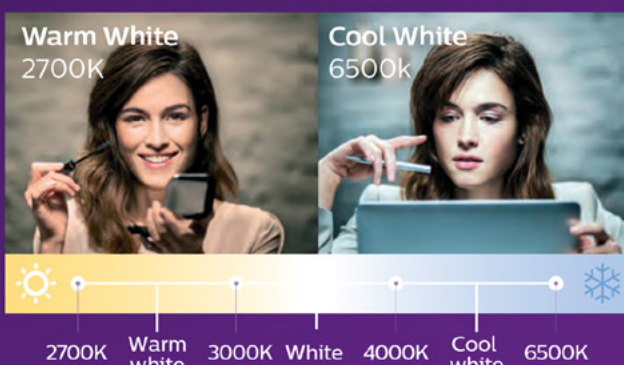


2. Choose a base

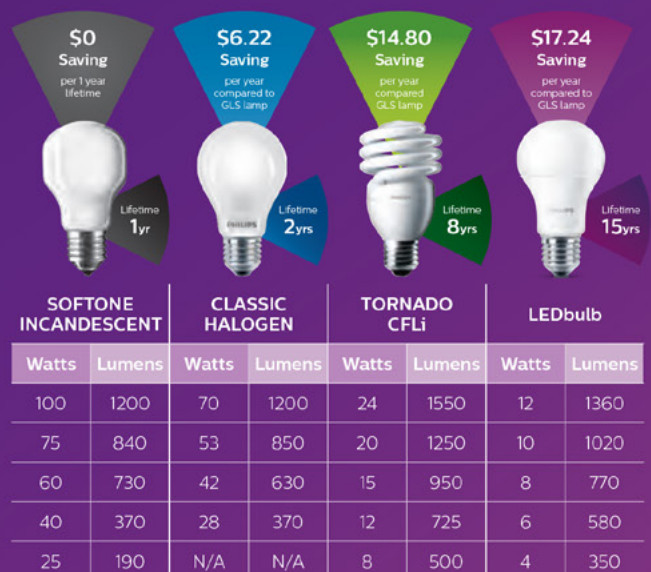


3. Choose brightness & ambiance

Colour temperature



Lumens vs Watts



Contents

7

Trueforce
LED Highbay



9

Trueforce
LED Road



10

Trueforce
LED Urban



11

Classic Filament
LED Bulbs



13

Sceneswitch
LED Bulb



16

Battery Backup
LED Bulb



17

Sensor
Motion & Daylight



18

High Lumen
LED Bulb



23

LEDstick
Compact Brightness



23

LED Spot
GU10 & MR16



23

Essential
LED Candle & Lustre



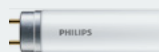
25

Essential
LED Bulb



27

LED Tube
T8 & T5



Why choose LED Lights?

Switch to LED and experience instant, natural light. It reduces energy bills too, which is kind to your budget and the environment. Philips LED bulbs stay shining year after year. And some are dimmable, so you can set the atmosphere to match your mood.

LED benefits



Warm or cool light



Light quality



Long lifetime



Energy efficiency



Familiar shapes



Dimmability



Environmentally
friendly



Instant start

Standard built in
Surge Protection



Choose LED Lights with built in Surge Protection and take advantage of the longer lifespan. LED Lights with built in Surge Protection withstands power spikes up to 500 volts, which makes this lamp ideal for standard electrical grid use and for when you run a generator.



Global Leader
in LED lighting

#1

Why choose Philips LED Lights?

Philips has been designing, developing and manufacturing lighting for 130 years; it's in our DNA. And for more than a decade, we've been inventing, refining and implementing LED technologies. This gives us quite a head start in terms of light quality and lifetime. So what you read on the packaging is based on years of experience.

Performance

Reliable lighting products

When we design LED light bulbs, our goals are energy efficiency, consistent colour and intensity and a very long life. This means you not only enjoy the light you want for longer, but you also pay less for it. We draw heavily on our research and experience, use the best materials, and manufacture the LEDs according to the toughest quality standards in the industry. So you can be sure that Philips LEDs are safe, long lasting and value for money.

Quality

Tested and certified for your peace of mind

We go a very long way to guarantee safety, uniformity and proper operation of our LEDs, and carry out extensive testing to verify it. All Philips LED light bulbs and lighting products have passed the highest level safety rating (specified by the international standards like IEC/EN 62471 and IEC60598). Our LEDs are carefully measured at every critical step during production, and are grouped in batches according to light output and colour output to ensure consistency in every one.



What are the benefits of EyeComfort?

There are many LED lights on the market today, but they are not all created equal. This is why we developed our Philips EyeComfort range. Our LEDs all conform to our EyeComfort standard, which measures our products against a set of key comfort criteria: flicker, glare, stroboscopic effect, photobiological safety, dimmable, tuning and colour rendering – factors that can impact the comfort of your eyes.



Photobiological safety



Reduced stroboscopic



Improved colour rendering



Dimmable



Tunability



Reduced flicker



No audible harm



Reduced glare



TrueForce

LED Highbay

Philips TrueForce LED Industry and Retail (Highbay– HPI/SON/HPL) lamps give you a quick and easy payback solution to replace HID/CFL lamps in industrial application. This LED solution comes with the benefit of being far more energy efficient and having a longer lifetime, which means less for replacement cost and maintenance. Lamp design allows for replacement of HID/CFL lamps with no gear loss and high power factor.

Benefits

- Cost saving with quick payback
- Easy adoption
- Low initial investment
- Up to 90% energy saving

Features

- High energy efficiency with directional light and no gear loss
- Premium Highbay works on Mains voltage only
- Long lifetime: 80,000 hrs
- HID lamp replacement solution with high power factor and 1KV surge protection (Core range only)
- Pleasant white light with CRI 80

Application

- Industrial – Factories, Warehouses, Distribution centres
- Retail – Hyper markets, Shopping malls
- Others – Transportation hubs, Convention centres,
- Sports halls

TrueForce LED Highbay



Product Type	LED	Bulb shape	Base cap	Lumen output	Efficacy	Colour temp.	CRI	Voltage	Lifetime	12NC
	W			lm	lm/w	k	0-100		Hrs	order code
TForce Highbay Core 1	25	TForce	E27	2600	104	3000	80	220-240	15000	929002408108
	25	TForce	E27	2700	108	6500	80	220-240	15000	929002408208
	30	TForce	E27	3000	100	3000	80	220-240	15000	929002408308
	30	TForce	E27	3200	107	6500	80	220-240	15000	929002408408
	40	TForce	E27	3700	93	3000	80	220-240	15000	929002408508
	40	TForce	E27	4000	100	6500	80	220-240	15000	929002408608
	50	TForce	E27	4800	96	3000	80	220-240	15000	929002408708
	50	TForce	E27	5000	100	6500	80	220-240	15000	929002408808
	50	TForce	E40	5000	100	6500	80	220-240	15000	929002408908
	65	TForce	E40	7000	108	4000	80	220-240	25000	929002409008
	65	TForce	E40	7000	108	6500	80	220-240	25000	929002409108
	80	TForce	E40	9000	113	4000	80	220-240	25000	929002409208
	80	TForce	E40	9000	113	6500	80	220-240	25000	929002409308
TForce Highbay Premium 2	140	TForce	E40	20000	143	4000	80	120-277	50000	929002281608
	140	TForce	E40	20000	143	4000	80	120-277	50000	929002281708
	140	TForce	E40	20000	143	6500	80	120-277	50000	929002281808
	140	TForce	E40	20000	143	6500	80	120-277	50000	929002281908
TForce HB Sensor 3	165	TForce	E40	25000	152	6500	80	120-277	80000	929002282108

TrueForce

LED Road

The new Philips TrueForce LED Road is the first of its kind to fit into the standard E27/E40 fixture and replicate a similar light effect to conventional street lighting. Philips TrueForce LED Road reduces the time needed to maintain, replace and fit each street light, including the knock-on time required for road closures. In addition, its longer lifespan of more than eight years plus energy savings of up to 45% compared to conventional HID helps save on running costs.

Benefits

- Energy saving up to 45%
- Easy to install, retrofit solution, zero re-wiring, saves installation cost
- 50Khrs lifetime, lower maintenance cost.

Features

- InstantFit Plug & play solution, compatible with EM ballast
- Omni-directional light source to compatible with the original reflector and generate similar bat-wing light distribution
- High energy efficiency up to 176lm/W
- Pleasant white light with CRI 70

Application

- Outdoor – street lighting



TrueForce LED Road



Product Type		LED	Bulb shape	Base cap	Lumen output	Efficacy	Colour temp.	CRI	Voltage	Lifetime	12NC
		W			lm	lm/w	k	0-100		Hrs	order code
TrueForce LED Road	1	25	TForce	E27	4000	160	3000	70	EM gear	50000	929001999402
		25	TForce	E27	4200	168	4000	70	EM gear	50000	929001999502
	2	35	TForce	E27	5500	157	3000	70	EM gear	50000	929001898402
		35	TForce	E27	6000	171	4000	70	EM gear	50000	929001898502
	3	55	TForce	E40	8400	153	3000	70	EM gear	50000	929002007402
		55	TForce	E40	9000	164	4000	70	EM gear	50000	929002007502
	4	65	TForce	E40	11200	172	3000	70	EM gear	50000	929002007602
		65	TForce	E40	12000	185	4000	70	EM gear	50000	929002007702

TrueForce

LED Urban

Philips TrueForce LED Public lamps provide an easy LED solution with a fast payback to replace High-Intensity Discharge (HID) in public or urban settings. These lamps bring the energy efficiency and long lifetime benefits of LED to HID replacement, with a low initial investment delivering instant savings. With the right lamp size and light distribution, customers can easily retrofit TrueForce LED lamps into their existing system, thereby enhancing the light quality without having to change the fixtures or sacrifice the light effect.

Benefits

- Cost saving with quick payback
- Easy adoption
- Low initial investment

Application

- Public Urban – Streets, Parks, Squares
- Public Road/Area – Streets, Area

Features

- High energy efficiency, up to 143lm/w
- Long lifetime 50,000hrs
- Same/right lamp size and lighting distribution for direct retrofit
- Pleasant white light with CRI 80
- Micro-lens design to have better light distribution
- 4KV surge protection for outdoor application
- IP65 design, suitable to use in the enclosed/open fixture

TrueForce LED Urban



Product Type		LED	Bulb shape	Base cap	Lumen output	Efficacy	Colour temp.	CRI	Voltage	Lifetime	12NC
		W			lm	lm/w	k	0-100		Hrs	order code
TrueForce LED Urban	1	21	TForce	E27	2850	136	3000	80	220-240	50000	929002006102
		21	TForce	E27	3000	143	4000	80	220-240	50000	929002006202
	2	28	TForce	E27	3800	136	3000	80	220-240	50000	929002006302
		28	TForce	E27	4000	143	4000	80	220-240	50000	929002006402
	3	42	Tforce	E27	5700	136	3000	80	220-240	50000	929002006502
		42	TForce	E27	6000	143	4000	80	220-240	50000	929002006602
		42	TForce	E40	5700	136	3000	80	220-240	50000	929002006702
		42	TForce	E40	6000	143	4000	80	220-240	50000	929002006802



Classic filament LEDbulbs

Functional and Decorative

Featuring a classic heritage design, Classic filament LEDbulbs combine the familiar shapes of classic incandescent bulbs with the benefits of the long lasting LED technology. They deliver beautiful, decorative warm-white light while saving around 88% on energy costs compared with traditional light bulbs.

Features

- Heritage design in glass with classic shape
- Designed to be seen, they look good on and off
- Perfect fit and high quality finishing
- High colour rendering (CRI> 80) for vivid colours
- Environmentally friendly: contains no mercury or other hazardous substances

Application

- Perfect for decorative installations
- Domestic applications
- Hospitality: restaurants and hotels

Benefits

- Around 88% energy saving
- Long lifetime that reduces the need for replacement
- Easy replacement of classic conventional lamps

Classic filament LEDbulbs



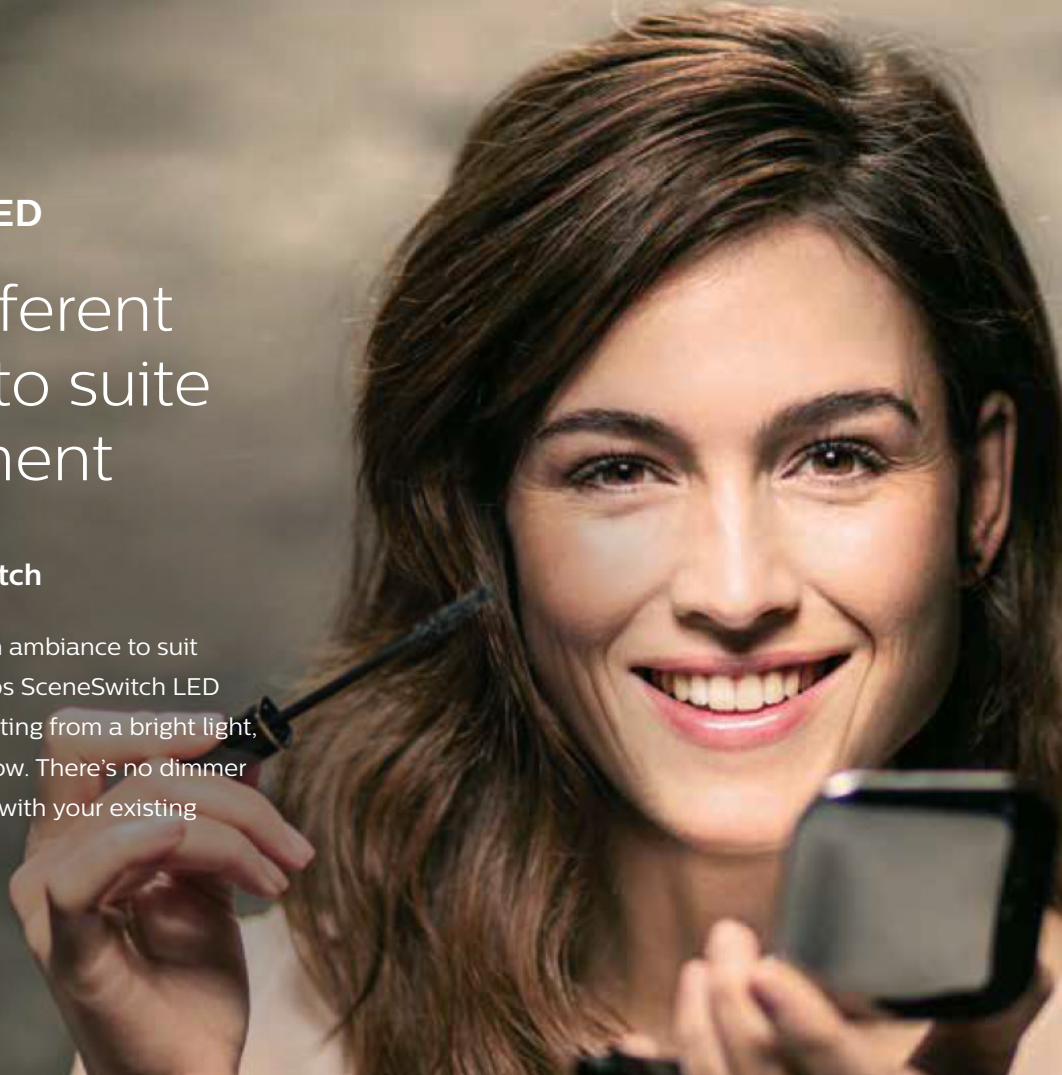
Product Type	LED	Bulb shape	Base cap	Lumen output	Efficacy	Colour temp.	CRI	Dimmable	Lifetime	12NC	
	W			lm	lm/w	k	0-100		Hrs	order code	
Clear glass LEDClassic	1	4.3	A60	B22	470	109	2700	80		15000	929001890155
		4.3	A60	E27	470	109	2700	80		15000	929001890055
		8.5	A60	B22	1055	124	2700	80		15000	929002026055
		8.5	A60	E27	1055	124	2700	80		15000	929002025455
		4	B35	E14	470	118	2700	80		15000	929001975508
		4	B35	E14	470	118	6500	80		15000	929001975608
		6	G120	E27	570	95	3000	80		15000	929001975108
		8	G93	E27	806	101	2700	80	x	15000	929001895749
Gold/Amber glass LEDClassic	2	5.5	A60	E27	250	45	2000	80	x	15000	929002223855
		5.5	ST64	E27	250	45	2000	80	x	15000	929002223955
		5.5	T32	E27	250	45	2000	80	x	15000	929002224155
		3.5	B35	E14	136	39	2000	80	x	15000	929002224355
		6.5	A160	E27	470	72	2000	80	x	15000	929001873501
		6.5	G200	E27	470	72	2000	80	x	15000	929001873401
		6.5	T65	E27	470	72	2000	80	x	15000	929001873601
		5	A160	E27	300	60	2000	80		15000	929001817101
		5	G200	E27	300	60	2000	80		15000	929001817201
Smokey glass LEDClassic	3	6.5	Crystal	E27	400	62	2700	80	x	15000	929002094401
		6.5	A160	E27	270	42	4000	80	x	15000	929001903201
		6.5	G200	E27	270	42	4000	80	x	15000	929001903101
		6.5	T65	E27	270	42	4000	80	x	15000	929001903301

Philips SceneSwitch LED

One lamp, different light settings to suite your requirement

Works with your existing switch

Sometimes you feel like a change in ambiance to suit whatever you're doing. With a Philips SceneSwitch LED lamp, you can easily change the setting from a bright light, to a natural light, to a cosy warm glow. There's no dimmer or extra wiring needed, it's all done with your existing switch.



SceneSwitch LED

Change your light with the flick of a switch

Some situations call for cool light, others benefit from the ambiance of a warm cosy glow. With Philips SceneSwitch, you can have different light settings from just one lamp. And you don't need a dimmer! Optimize your lighting for relaxing, hobbies, recreation or working. Simply at the flick of a switch. And that's your existing switch! No extra installation is required.

Benefits

- Create your own scene with one lamp simply using your existing light switch
- No dimmer or additional installation needed

Features

- One lamp with the ability: to change the brightness of your light output and change the colour temperature of the light
- Plug and play

Application

- Indoor applications in open luminaires (with an open/free air gap of min. 10 mm)
- Accent and general lighting (e.g. hotels, shops and offices)

SceneSwitch



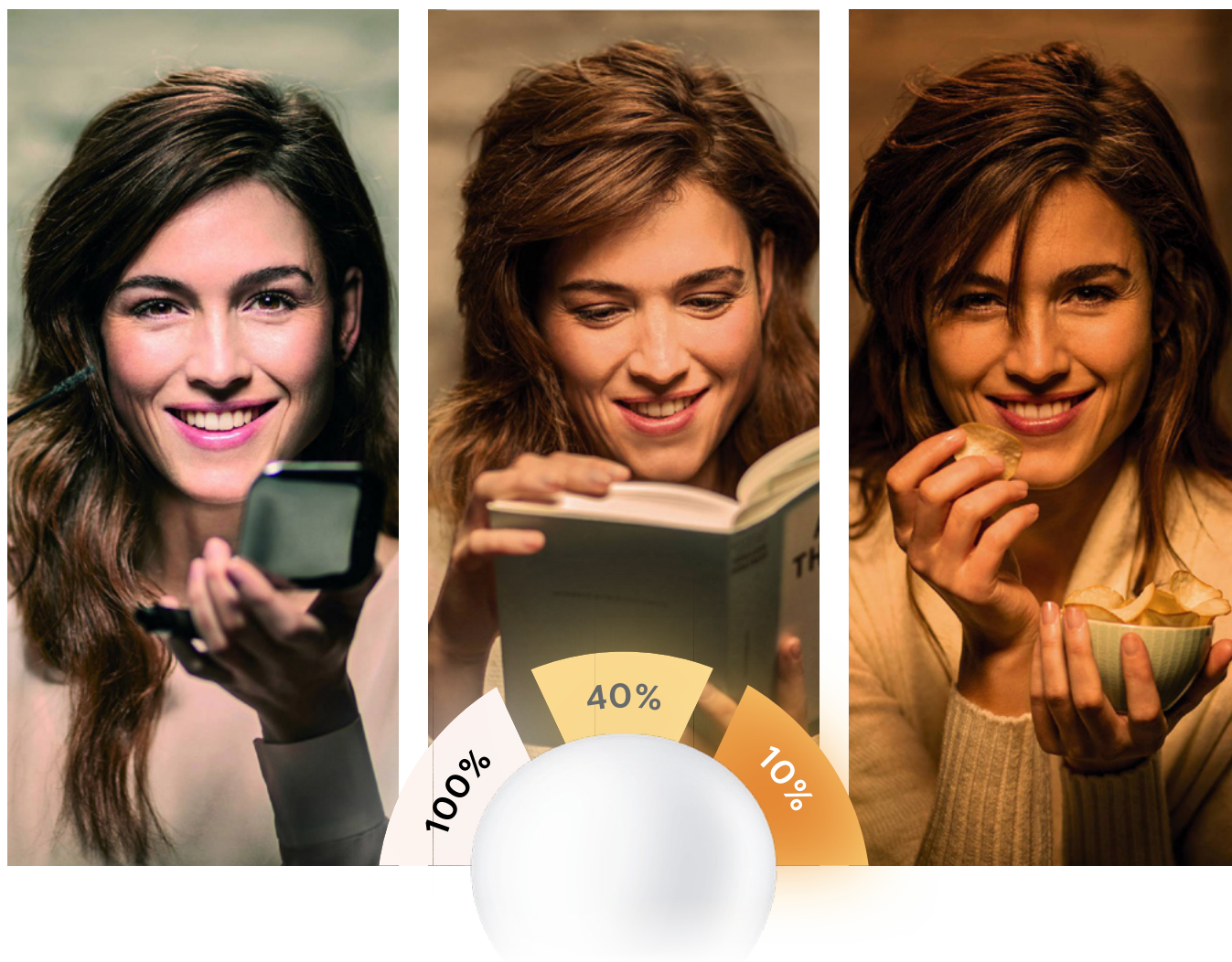
Product Type		LED	Bulb shape	Base cap	Lumen output	Efficacy	Colour temp.	CRI	Dimmable	Lifetime	12NC
		W			lm	lm/w	k	0-100		Hrs	order code
"SceneSwitch brightness change"	1	7.5-2.5-1	A60	E27	806-380-140	107-152-140	6500	80		15000	929001906727
	1	7.5-3-1.2	A60	E27	806-380-140	107-127-117	3000	80		15000	929001906427
	3	4.8	PAR16	GU10	355	73	2700-2500-2200	80		15000	929002981818
"SceneSwitch colour change"	1	8	A60	E27	880	110	6500 / 3000	80		15000	929001906127
	2	8	A60	B22	880	110	6500 / 3000	80		15000	929001906369
	3	5	PAR16	GU10	450	90	6500 / 3000	80		15000	929001894607

One bulb two colour settings



Sometimes you feel like a change in ambiance to suit whatever you’re doing. With a Philips SceneSwitch, you can easily change the setting from a warm and bright light for an inviting ambiance, to a cool and energizing light for hobbies or work. No dimmer or additional installation required.

One bulb three brightness settings



Philips SceneSwitch lets you change your room's ambience with 3 brightness settings, by just a flick of the switch. No dimmer or additional installation required.



From bright light

A brighter more intense light to help you focus and experience every detail.



To natural light

A less intense, natural light creates an inviting ambience to host friends or wind down with a book.



To a cosy warm glow

A cosy warm glow to help you relax and enjoy the moment.

Rechargeable LED Bulb



Battery Backup Lamp

Philips Rechargeable Battery Backup LED Lamp with Robust Design and leading reliability puts you at ease that you will have light no matter what. Power cuts and load-shedding can have negative effects on our well-being. Philips Rechargeable LED Bulb delivers a sense of care and safety to you and your loved ones.

Design Highlights

- A Ventless design safeguards against the risk of short circuiting and fire hazard due to insect entrapment and/or moisture contamination
- Long Life Battery (500 Recharge Cycles)
- Intelligent Battery Management system prevents over charging / discharging to secure battery life
- Back up light for more than 3 hours
- Wide Voltage 110–240V 50/60Hz
- Long Life 15000 Hours

- Available in 3000K & 6500K CCT
- Environmental Friendly: Free of mercury and other hazardous material
- RoHS Compliant

Application

- Design for Indoor applications only: Bed room/Living Room/Staircase/Bathroom/Foyer
- Hotel guest room/Lobby/Corridors/Lifts
- Retail check out area/common area



B22



E27

Rechargeable LED Bulb



Product Type	LED	Bulb shape	Base cap	Lumen output	Efficacy	Colour temp.	CRI	Dimmable	Lifetime	12NC
	W			lm	lm/w	k	0-100		Hrs	order code
Rechargeable Battery Backup LEDBulb	7.5w	A67	E27	700	93	3000	80		15000	929002454907
	7.5w	A67	E27	750	100	6500	80		15000	929002455007
	7.5w	A67	B22	700	93	3000	80		15000	929002456107
	7.5w	A67	B22	750	100	6500	80		15000	929002456207

Motion + Daylight Sensor LED Bulb



Lights up when you need it, saves energy when you don't

Introducing the new Philips motion and daylight sensor LED lamp, a clever energy efficient addition to any home. Thanks to a built-in sensor, this modern LED lamp can detect when you walk close-by and turns on automatically. Then, when the surrounding light becomes bright enough, the motion sensor automatically switches off, so the lamp will not turn on, even when there is motion around, thus saving you energy.

Design Highlights

- Form factor is designed as a direct retrofit of A60 shape
- Long lifetime of 15,000 hours
- Up to 88% energy savings when replacing a GLS
- Designed for a wide range of applications including hallways, porches, garages and utility areas
- LED Bulb turns on when motion is detected at night or low light conditions (below 80 lux).

Application

These sensor lamps are ideal for utility areas when you have your hands full, hallways and outdoor areas like porches to welcome you home safely. They are super simple to install as they come in standard cap shapes and can easily replace your standard bulbs. No need for special fittings or luminaires as they fit directly into standard sockets. Just make sure the sensor is not covered as it cannot work in a closed luminaire.

Motion + Daylight Sensor LED Bulb



Product Type	LED	Bulb shape	Base cap	Lumen output	Efficacy	Colour temp.	CRI	Dimmable	Lifetime	12NC
	W			lm	lm/w	k	0-100		Hrs	order code
Motion + Daylight Sensor LED Bulb	8	A60	B22	806	101	6500	80		15000	929002400207
	8	A60	B22	850	106	3000	80		15000	929002400107
	8	A60	E27	806	101	6500	80		15000	929002058607
	8	A60	E27	850	106	3000	80		15000	929002058507

High Lumen

LED Bulbs

High lumen LED Bulb for indoor application, designed for a wide range of applications including damp areas.

The housing is made of plastic and metal and not as fragile as glass bulbs, which makes it even more popular in most applications. Under 220–240V, the product can deliver the best performance. Under 90V, the bulb can be lit up, making it suitable for even the most unstable line voltage.

LEDbulb offers up to 89% energy saving when replacing GLS and 50% when replacing a CFLi. It also has a longer lifetime of 10,000 hours.



High Lumen LED Bulb



Product Type	LED	Bulb shape	Base cap	Lumen output	Efficacy	Colour temp.	CRI	Dimmable	Lifetime	12NC
	W			lm	lm/w	k	0-100		Hrs	order code
High Lumen LED Bulb	14.5	A67	E27	1650	114	3000	80		10000	929002003849
	14.5	A67	B22	1650	114	3000	80		10000	929002004449
	14.5	A67	E27	1800	124	6500	80		10000	929002003949
	14.5	A67	B22	1800	124	6500	80		10000	929002004549
	19	A80	E27	2300	121	6500	80		10000	929002004149
	19	A80	B22	2300	121	6500	80		10000	929002004749
	19	A80	E27	2150	113	3000	80		10000	929002004049
	19	A80	B22	2150	113	3000	80		10000	929002004649



LEDstick

Compact Brightness

Perfect replacement for
(CFLi) Genie lamps



Philips LEDstick delivers high quality light in a compact design ideal for downlights and slim luminaire applications. Philips LEDstick offers around 88% energy saving versus GLS and 27% versus CFLi lamps with a longer life of 25 000 hours.

Design Highlights

With optimized optical design, Philips LEDstick technology delivers:

- All around illumination
- Up to 70% less glare*
- No visible flickering
- Eye safety of lamps compliance**
- 25 000 hours lifespan
- Environmental friendly, no Mercury
- Low Carbon Footprint

Application

The compact and bright light makes it ideal for general lighting applications in the retail and hospitality industry by offering their guests a differentiating ambiance and unique experience in public areas like:

- Elite shops
- Corridors / Stairways / Washrooms
- Lobby / Reception areas
- Hotel rooms / Bars
- Home

* Comparing the bulb surface brightness between Philips LEDstick and CFLi Genie

** Compliance with IEC62471 photobiological safety of lamps and lamp systems

LEDstick



Standard built in
Surge Protection



Product Type	LED	Bulb shape	Base cap	Lumen output	Efficacy	Colour temp.	CRI	Dimmable	Lifetime	12NC
	W			lm	lm/w	k	0-100		Hrs	order code
Essential LEDStick	11	Stick	B22	950	86	3000	80		25000	929002400537
	11	Stick	B22	1055	96	6500	80		25000	929002400637
	11	Stick	E27	950	86	3000	80		25000	929002382537
	11	Stick	E27	1055	96	6500	80		25000	929002382737
	9	Stick	B22	750	83	3000	80		25000	929002400337
	9	Stick	B22	806	90	6500	80		25000	929002400437
	9	Stick	E27	750	83	3000	80		25000	929002382237
	9	Stick	E27	806	90	6500	80		25000	929002382437
	6.5	Stick	B22	550	85	3000	80		25000	929002400737
	6.5	Stick	B22	600	92	6500	80		25000	929002400837
	6.5	Stick	E27	550	85	3000	80		25000	929002382837
	6.5	Stick	E27	600	92	6500	80		25000	929002383037



LED Spot Lighting

GU10, MR16 and LED Reflector lamps

Delivering a warm, halogen-like accent lighting, LED Spot Lighting is a perfect fit for residential and commercial solutions. It realises more natural colours, enabling a cozy and comfortable ambiance in residential and hospitality settings, it also helps to emphasize the colour and beauty of merchandise in the retail environment.

Design Highlights

- Achieve more natural colour realization for cosy ambiance and better merchandise display with high CRI value
- Clearly defined beam spread for accent lighting
- Familiar look & feel of Glass halogen spots
- Hassle free retrofit solution
- Long lifetime of 15,000 hours to reduce needs of replacement
- High efficient energy use
- UV- and IR-free light for less heat and protection for heat-sensitive objects

Application

- Hospitality: hotel guest room, corridors, lobby, reception area, restaurants, bars, cafés
- Home: living room, bedrooms, hall way
- Retail: exhibitions, display cabinets, shops, dressing rooms

LED GU10 and MR16



Product Type	LED	Bulb shape	Base cap	Lumen output	Efficacy	Colour temp.	CRI	Dimmable	Lifetime	12NC
	W			lm	lm/w	k	0-100		Hrs	order code
Master GU10 ①	4.9	PAR16	GU10	395	81	2700	90	x	25000	929001348808
	4.9	PAR16	GU10	405	83	3000	90	x	25000	929001348908
	4.9	PAR16	GU10	420	86	4000	90	x	25000	929001349008
Master Value GU10 ①	5	PAR16	GU10	400	80	3000	80	x	25000	929002348402
	5	PAR16	GU10	450	90	4000	80	x	25000	929002351102
	5	PAR16	GU10	450	90	6500	80	x	25000	929002369602
Essential GU10 ②	3.2	PAR16	GU10	300	94	2700	80		15000	929002057307
	3.2	PAR16	GU10	315	98	4000	80		15000	929002057407
	3.2	PAR16	GU10	320	100	6500	80		15000	929002057507
Essential MR16 ③	3	MR16	G5.3	260	87	2700	80		15000	929001240108
	3	MR16	G5.3	290	97	6500	80		15000	929001240208
	5	MR16	G5.3	400	80	2700	80		15000	929001239708
	5	MR16	G5.3	435	87	6500	80		15000	929001239808
Essential Spot lamp ④	9	R80	E27	880	98	2700	80		15000	929001857908
	9	R80	E27	950	106	6500	80		15000	929001858108
	7	R63	E27	680	97	2700	80		15000	929001857608
	7	R63	E27	720	103	6500	80		15000	929001857808
		R50	E14	350	88	2700	80		15000	929001857319
	4	R50	E14	400	100	6500	80		15000	929001857519



LEDcandle and LEDlustre

Sustainable Essential Range.

With energy savings of up to 87% the Philips Essential LEDcandle and LED lustre range is ideal for installation in various kinds of fixtures where people can easily enjoy the art of light. The lamps can perfectly work with crystal chandeliers, wall sconces where lamps are exposed or modern fixtures with a glass shield.

Design Highlights

- Low power consumption
- Long-lifetime of 25 000 hours
- Both warm white 2700 K and cool white 2700 K CCT available
- No UV and Cool beam (no IR)
- Environmental friendly, no Mercury or any other hazardous substances
- Low Carbon Footprint

Application

Philips Essential LEDcandle and LED lustre lamps are ideal for general and decorative lighting in the hospitality industry, as well as in home environments. Mounted in full view in chandeliers, wall sconces or modern luminaires, fit all existing fixtures with an E14, E27 or B22 sockets. Drawing upon inputs from chandelier makers and designed to enhance the aesthetic appeal of the chandelier or luminaire, not only when lit but also when not.

LEDcandle and LEDluster



Standard built in
Surge Protection



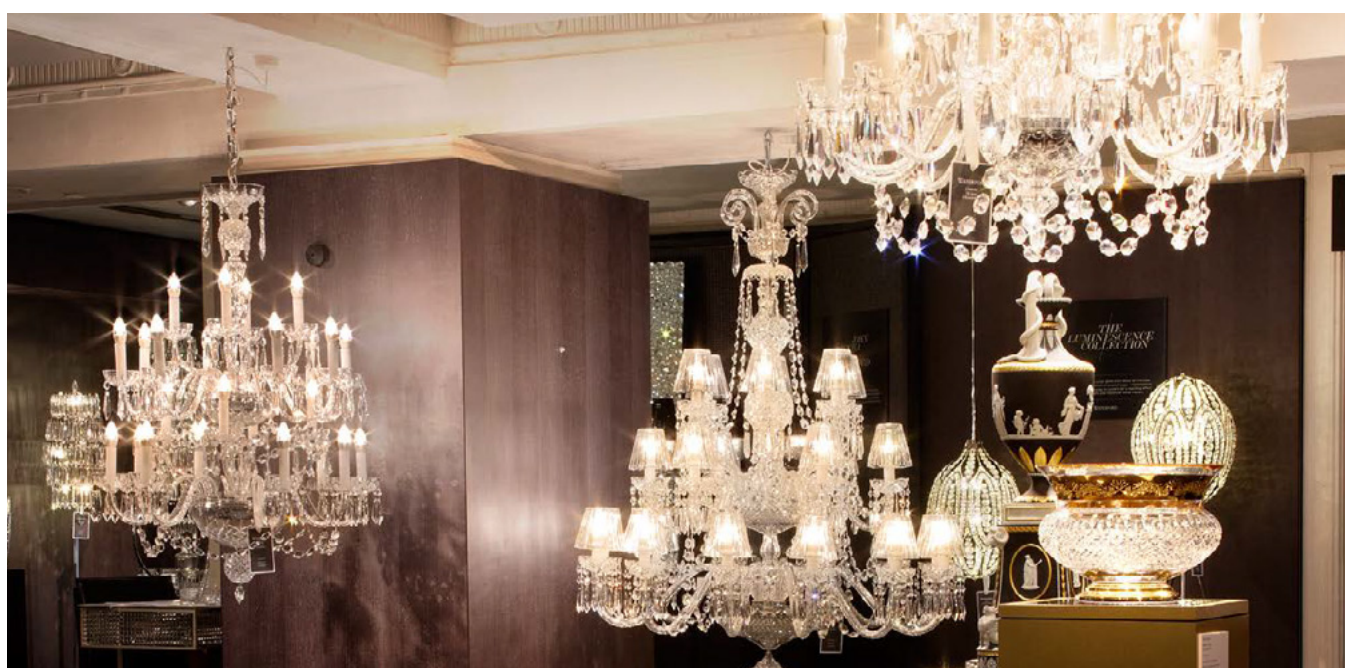
1



2



Product Type	LED	Bulb shape	Base cap	Lumen output	Efficacy	Colour temp.	CRI	Dimmable	Lifetime	12NC
	W			lm	lm/w	k	0-100		Hrs	order code
Essential LEDCandle 1	6.5	B35	E14	620	95	2700	80		25000	929001348808
	6.5	B35	E14	620	95	4000	80		25000	929001348908
	6.5	B35	E27	620	95	2700	80		25000	929001349008
	4	B35	E14	330	83	2700	80		25000	929002348402
	4	B35	E14	330	83	4000	80		25000	929002351102
	4	B35	E27	330	83	2700	80		25000	929002369602
	4	B35	E27	330	83	4000	80		25000	929002057307
	4	B35	B22	330	83	2700	80		25000	929002057407
Essential LEDLustre 2	6.5	P45	E14	620	95	2700	80		25000	929002057507
	6.5	P45	E14	620	95	4000	80		25000	929001240108
	6.5	P45	E27	620	95	2700	80		25000	929001240208





Essential LED Bulb

Sustainable, green, everyday lighting

Philips Essential LED Bulb is a sustainable green light bulb to ensure direct replacement of GLS bulbs in indoor application with latest LED technology, Essential LED Bulb offers over 88% energy saving and lasts up to 25 000 hours, saving you money over a longer time period.

From LED bulb chips chosen to the final assembly, different kinds of professional quality control methods are adopted to guarantee the light quality and consistency through the product lifetime. The product is professionally designed to endure surge and environmental tests to make sure it can be adapted into different indoor application situations.

Design Highlights

- Form factor is designed as a direct retrofit into A60 and A65 fixtures
- Over 88% energy-saving compared with GLS
- Long lifetime of 25 000 hours.
- Warm white CCT 3000K and cool daylight CCT 6500K available
- Environmental friendly, no Mercury or any other hazardous substances
- Low Carbon Footprint

Application

- Elite shops
- Corridors / Stairways / Washrooms
- Lobby / Reception areas
- Hotel rooms / Bars
- Home

Essential LED Bulb



Standard built in
Surge Protection



Product Type	LED	Bulb shape	Base cap	Lumen output	Efficacy	Colour temp.	CRI	Dimmable	Lifetime	12NC
	W			lm	lm/w	k	0-100		Hrs	order code
Essential LED Bulb	7	A60	E27	500	71	3000	80		25000	929001955168
	7	A60	E27	540	77	6500	80		25000	929001955268
	7	A60	B22	500	71	3000	80		25000	929001977268
	7	A60	B22	540	77	6500	80		25000	929001977368
	10	A60	E27	710	71	3000	80		25000	929001955368
	10	A60	E27	750	75	6500	80		25000	929001954868
	10	A60	B22	710	71	3000	80		25000	929001977468
	10	A60	B22	750	75	6500	80		25000	929001977568
	12	A60	E27	900	75	3000	80		25000	929001954968
	12	A60	E27	950	79	6500	80		25000	929001955068
	12	A60	B22	900	75	3000	80		25000	929001977668
	12	A60	B22	950	79	6500	80		25000	929001977768
	14	A60	E27	1150	82	3000	80		25000	929002299668
	14	A60	E27	1250	89	6500	80		25000	929002299968
	14	A60	B22	1150	82	3000	80		25000	929002308668
	14	A60	B22	1250	89	6500	80		25000	929002308968





LEDTube

T8 and T5 Lamps

Philips offers reliable value-for-money as well as premium and high performance lamps as part of its portfolio. Incorporated with quality LED chips and other advanced technologies, these products help customers to achieve over 55% energy saving and significant maintenance cost reduction compared to fluorescent lamps. It also helps generate a more natural and comfortable light effect and to build up a green and environmentally friendly image for our customers.

Features

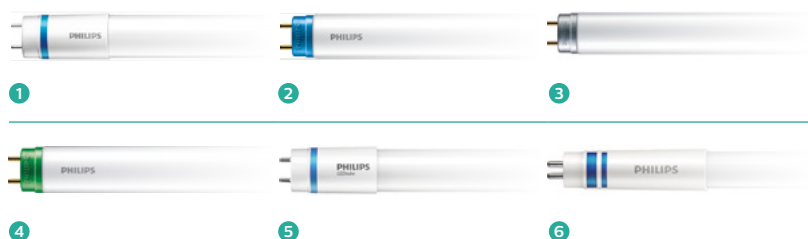
- Reliable operation between -20 °C to 45 °C ambient temperature
- Lifetime from 15000 to 50000 hours
- Switching cycles from 50000x to 200000x
- Instant on, no flicker or buzz
- Advanced optical design ensures a uniform light output and superior optical efficiency
- Energy savings over 55%*

Application

- Retail
- Industrial
- School
- Hospitals
- Offices
- Parking Lots
- Warehouses and
- Public Areas

* Based on comparison between 16W Ecofit LEDtube standard and Philips TLD standard or super 80 36W (40-44W system power when working with Electro Magnetic Ballasts)

Ecofit LEDtube T8



Standard built in
Surge Protection



Product Type	LED	Bulb shape	Base cap	Lumen output	Efficacy	Colour temp.	CRI	Power Factor	Lifetime	12NC
	W			lm	lm/w	k	0-100		Hrs	order code
Master LEDTube VLE (EM/Mains) ❶	20.5	T8	G13	3100	151	4000	83	0.9	50000	929002021802
	20.5	T8	G13	3100	151	6500	83	0.9	50000	929002021902
	14	T8	G13	2100	150	4000	83	0.9	50000	929002021502
	14	T8	G13	2100	150	6500	83	0.9	50000	929002021602
	8	T8	G13	1050	131	4000	83	0.9	50000	929002021202
	8	T8	G13	1050	131	6500	83	0.9	50000	929002021302
CorePro LEDTube (EM/Mains) ❷	20	T8	G13	2200	110	4000	80	0.9	30000	929001337902
	14.5	T8	G13	1600	110	4000	80	0.9	30000	929001338802
	8	T8	G13	800	100	4000	80	0.9	30000	929001338602
EcoFit LEDTube Consumer pack with starter (EM/Mains) ❸	20	T8	G13	2000	100	4000	70	0.5	15000	929001940568
	20	T8	G13	2000	100	6500	70	0.5	15000	929001940668
	16	T8	G13	1600	100	4000	73	0.5	15000	929001184568
	16	T8	G13	1600	100	6500	73	0.5	15000	929001184668
	8	T8	G13	800	100	4000	73	0.5	15000	929001184768
	8	T8	G13	800	100	6500	73	0.5	15000	929001184868
EcoFit LEDTube Industrial pack w/o starter (EM/Main) ❹	20	T8	G13	2000	100	4000	70	0.5	15000	929001940538
	20	T8	G13	2000	100	6500	70	0.5	15000	929001940638
	16	T8	G13	1600	100	4000	73	0.5	15000	929001184538
	16	T8	G13	1600	100	6500	73	0.5	15000	929001184638
	8	T8	G13	800	100	4000	73	0.5	15000	929001184738
	8	T8	G13	800	100	6500	73	0.5	15000	929001184838
Master Mains LEDTube (Mains 100-240v) ❺	20	T5	G5	2800	140	3000	80	0.9	50000	929002421208
	20	T5	G5	3000	15	4000	80	0.9	50000	929002421308
	20	T5	G5	3000	150	6500	80	0.9	50000	929002421408
	16.5	T5	G5	2300	139	3000	80	0.9	50000	929002420908
	16.5	T5	G5	2500	152	4000	80	0.9	50000	929002421008
	16.5	T5	G5	2500	152	6500	80	0.9	50000	929002421208
	8	T5	G5	1000	125	3000	80	0.9	50000	929002420608
	8	T5	G5	1050	131	4000	80	0.9	50000	929002420708
	8	T5	G5	1050	131	6500	80	0.9	50000	929002420808
Master HF LEDTube (90-130v, EM ballast) ❻	20	T5	G5	2800	140	3000	83	0.9	50000	929001391302
	20	T5	G5	3000	150	6500	83	0.9	50000	929001391502
	16.5	T5	G5	2300	139	3000	83	0.9	50000	929001391002
	16.5	T5	G5	2500	152	6500	83	0.9	50000	929001391202
	8	T5	G5	1000	125	3000	83	0.9	50000	929001390702
	8	T5	G5	1050	131	6500	83	0.9	50000	929001390902



We strive to make the world a better place. We do this by enhancing people's lives with light. We use the transformative power of light to make people safer – providing quality light in public spaces and at home. We use light to make people happier – light that can dazzle, delight, inspire, inform and entertain; as well as make cities more livable and satisfy people's daily needs. We provide lighting to help make people more productive – providing the right light for the right task; light to help people concentrate better; lighting that saves energy and reduces the cost of maintenance, light that helps improve decision making, improves crop yields, even light that can help you to locate a product in a supermarket.

Our brand starts with you. We create technologies that improve your life. Each product, system and service that carries the Philips brand answers a need. We deliver innovation that matters to you.

For innovative lighting solutions please contact our Sub-Saharan Contact Centres:

South Africa
0800 990 301
[+27\(0\)11 844 8900](tel:+27(0)118448900)

Kenya
[+254 203 893 734](tel:+254203893734)

Nigeria
[+234 1 912 509](tel:+2341912509)

Ghana
[+233 242 426 680](tel:+233242426680)

Or by Email:

ordersdesk@signify.com, projects-sa@signify.com(Sales Team), Support.Philipslightingafrica@signify.com(B2C), Support.Africa@signify.com (B2B)

South African Office: Woodmead North Office Park, Philips Building, 54 Maxwell Drive, Woodmead, Johannesburg, 2191



© 2021 Philips Lighting. All rights reserved. Philips reserves the right to make changes in specifications and/or to discontinue any product at any time without notice or obligation and will not be liable for any consequences resulting from the use of this publication.

Errors and omissions excepted. The reader accepts any typographical errors or inaccuracies and that this brochure may not be complete or current. We reserve the right to correct any errors, inaccuracies or omissions and to change or update information at any time, without prior notice.