



# T8

## 15T8/COR/48-835/MF20/G 10/1

Philips MainsFit (UL Type B) CorePro T8 LED tubes deliver high-quality, flicker free performance at an affordable price. The UL Type B LED tubes are designed with easy installation and long-term maintenance simplicity in mind. Upgrade your lighting to Philips and realize 50,000 hour LED lifetime backed by a 5-year, full replacement limited warranty.

### Product data

General Information		Lamp Current (Min)	
Base	G13 [ Medium Bi-Pin Fluorescent]		55 mA
EU RoHS compliant	Yes	Starting Time (Nom)	0.5 s
Nominal Lifetime (Nom)	50000 h	Warm Up Time to 60% Light (Nom)	0.5 s
Switching Cycle	50000X	Power Factor (Nom)	0.9
Technical Type	15-25-28-30-32W	Voltage (Nom)	120-277 V
Light Technical		Temperature	
Color Code	835 [ CCT of 3500K]	T-Ambient (Max)	45 °C
Beam Angle (Nom)	240 °	T-Ambient (Min)	-20 °C
Initial lumen (Nom)	2000 lm	T-Storage (Max)	65 °C
Color Designation	White (WH)	T-Storage (Min)	-40 °C
Correlated Color Temperature (Nom)	3500 K	T-Case Maximum (Nom)	70 °C
Luminous Efficacy (rated) (Nom)	133.00 lm/W	Controls and Dimming	
Color Consistency	<6	Dimmable	No
Color Rendering Index (Nom)	82	Mechanical and Housing	
LLMF At End Of Nominal Lifetime (Nom)	70 %	Bulb Finish	Frosted
Operating and Electrical		Bulb Material	Glass
Input Frequency	50 to 60 Hz	Product Length	48 in
Power (Rated) (Nom)	15 W		
Lamp Current (Max)	125 mA		

# T8

## Approval and Application

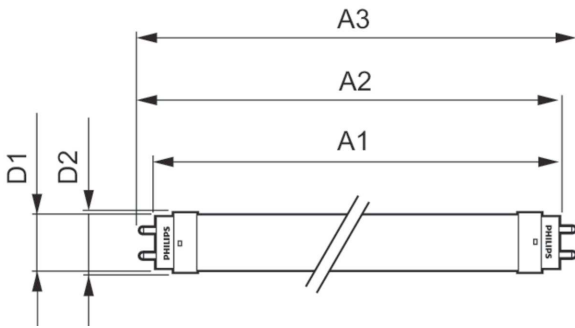
Energy Efficiency Label (EEL)	Not applicable
Energy Saving Product	Yes
Approbation Marks	RoHS compliance UL certificate DLC compliance
Energy Consumption kWh/1000 h	- kWh

## Product Data

Order product name	15T8/COR/48-835/MF20/G 10/1
--------------------	-----------------------------

EAN/UPC - Product	046677471750
Order code	471755
Numerator - Quantity Per Pack	1
Numerator - Packs per outer box	10
Material Nr. (12NC)	929002394904
Net Weight (Piece)	0.215 kg
Model Number	9290023949

## Dimensional drawing

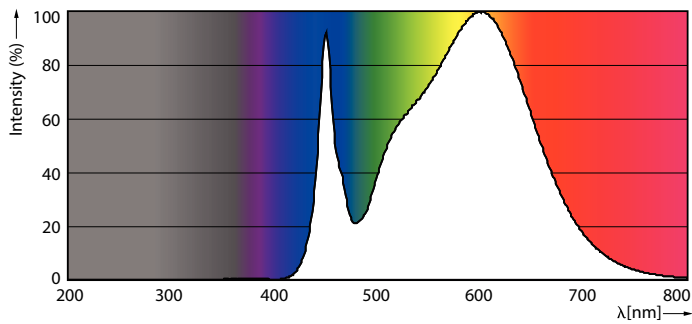


TLED T8 120-277V 15-32W 2000lm 3500K G13

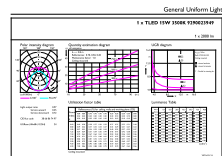
## Product

15T8/COR/48-835/MF20/G 10/1

## Photometric data



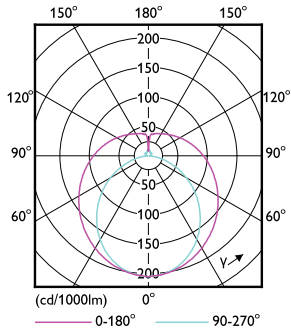
LEDtube G13 835 COR



OSRAM Photometric 13 Philips Lighting 13 Page 13

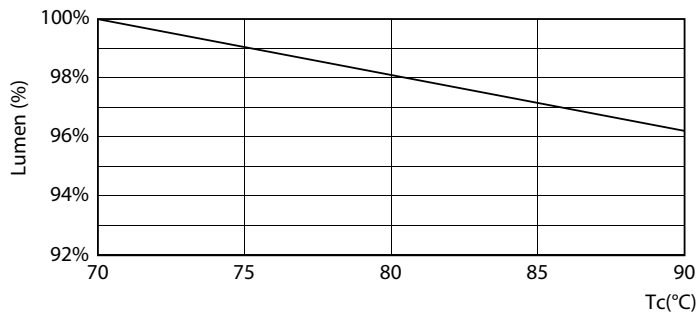
LEDtube 15W G13 2000lm 835

Photometric data

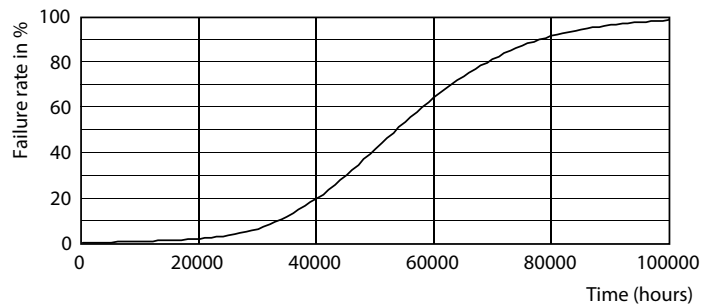


LEDtube G13 COR

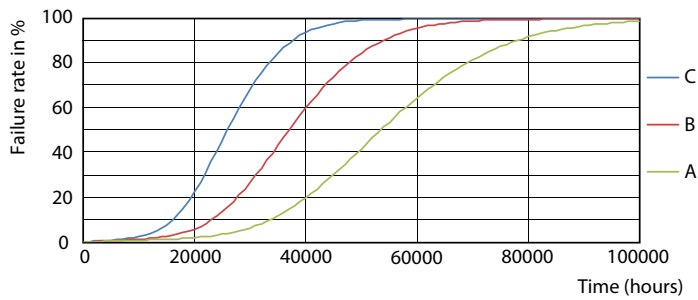
Lifetime



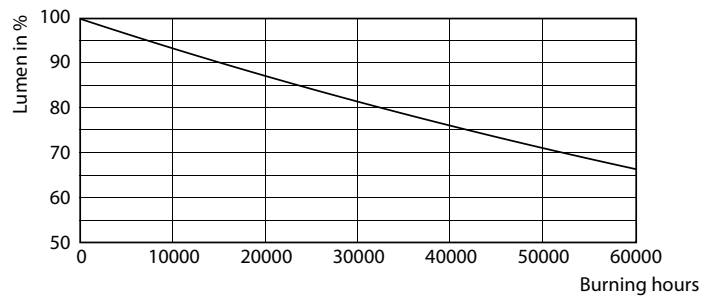
LEDtube 15W 50K LumenVsTc



LEDtube 50K-LED



LEDtube 50K FailureRate-LED



LEDtube 50K-LMP

Lifetime



LEDtube 50K LifetimeVsTc-LED

