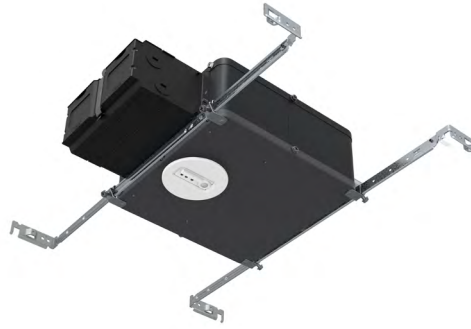


PHILIPS

Indoor Controls

System bridge accessory

Wireless controller with a connected sensor



Project: _____
 Location: _____
 Cat. No: _____
 Type: _____
 Lamps: _____ Qty: _____
 Notes: _____

The System bridge accessory SBA is a wireless controller with a connected integral occupancy and daylight sensor and supports wireless mesh connectivity. When configured without a gateway the device works via bluetooth in a **SpaceWise like** mode, or in an **Interact** mode if a compatible gateway is used.

SBA is sold as an accessory to connect any 0-10V or electronic low voltage luminaire with the Interact Pro scalable system. Also, ideal for downlights and linear systems where a string of luminaires can be controlled together with a maximum load of 730VA at 120V.

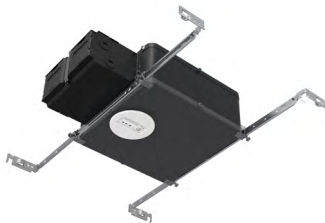
Ordering guide

example: **SBAZ10-CS-ER100-RS**

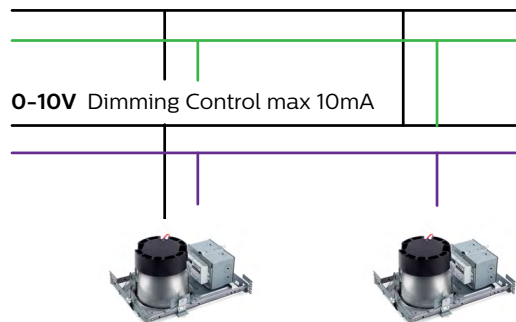
Series	Dimming	Sensor	Options
<input type="text" value="SBA"/>	<input type="text" value=""/>	<input type="text" value=""/>	<input type="text" value=""/>
SBA Interact Ready System Bridge	Z10 0-10V (120-347V) ² ELV Electronic Low Voltage	CS ⁴ Interact Pro scalable sensor SB ¹ SC1500 advanced sensor bundle with IoT capabilities for enterprise scale projects	LC Chicago Plenum ER100 ^{2,3} UL 924 Listed sensor bypass RS Remote sensor

1. Must be specified with compatible Interact Pro scalable system
2. ER100 option is 120-277V with Z10 dimming
3. Consult factory for ER100 option with ELV dimming
4. Must order IRT9015 Interact commissioning remote with each system order

SBA



Power Switched mains: max 730VA



interact ready.

SBA System bridge accessory wireless controller

Interact compatible via bluetooth (like SpaceWise) or connected with gateway

Specifications

Frame features

- **Housing:** .026" galvanized steel. Airseal® housing minimizes air leakage to less than 2 CFM at 1.57PSF (or 75PA) in compliance with the International Energy Conservation Code, and Washington State Energy Code (Section 502.4).
- **Lower frame and top cover:** .026" galvanized steel. Maximum ceiling thickness of 1.5"(38mm). 3/8" (9.5mm) deep integral collar with four notches at 90° apart to simplify alignment.
- **Junction Box:** 2.5" X 5 3/8" X 2" (27 cu. in) .032" galvanized steel. UL listed 90° supply conductors. Rated for branch circuit wiring supplying connected luminaires (daisy chaining).
- **Mounting bars:** .059" galvanized steel. Bars pivot for easy attachment and wire-in below ceiling line, and extend to accommodate 16" (406mm) to 24" (610mm) O.C. joist spacing. Bars can accommodate 12" (305mm) O.C. joist spacing after a slight field modification. Features integral self tapping phillips/ square drive screws for secure attachment to wood or metal construction. Attaches to T-bar ceilings without the need of accessories. Bars installed on shortest dimension of frame, but can be easily repositioned 90 degrees from original position.

Component features

Emergency Options (ER100)

- Power Sensing (Factory default) – Recommended UL924 option requires unswitched power sense line, absence of voltage on the normal circuit triggers luminaire to 100% output
- Power Interruption Detection (Field option) – Detects AC power interruption >30ms triggers 90 minute emergency mode with luminaire at 100% output

ELV Controller

- Accommodates reverse phase dimmable (ELV) luminaires by converting from a 0-10v command signal. ETL/cETL listed.

Electrical

- SBAZ10 including LC option
 - Voltage: 120-347V
 - Frequency: 50/60HZ
 - Max Power: 730VA
- SBAELV including LC option
 - Voltage: 120V
 - Frequency: 60HZ
 - Max Power: 450VA

Environmental and Approbations

- Operating temperature: 0°C to 40°C
- Storage temperature: -25°C to 80°C
- Storage humidity: 0-95% non-condensing
- cULus listed to 1598 and 8750 for use in damp locations
- CCEA (with LC option)

Warranty

- 5 years
- Visit signify.com/warranties for complete warranty information

Interact Pro scalable sensor (evolution of SpaceWise)

- CS is a connected sensor with integral occupancy and daylight sensing and supports wireless mesh connectivity.
- The sensor works in the Foundation mode (similar to SpaceWise) when configured without a gateway or in an Interact Pro Advanced or Enterprise mode if a compatible gateway is used.
- Interact Pro includes an App, a portal and a broad portfolio of wireless luminaires, lamps and retrofit kits all working on the same system.
- Startup is implemented via Interact Pro App (Android or iPhone) & BlueTooth connectivity. The App provides flexibility to choose between a gateway or non gateway mode for setup.
- Setup with the gateway requires wired internet access to the gateway. It is possible to add a gateway at a later point.
- Prepare project configuration steps remotely and use IRT9015 remote onsite to identify and group devices together.
- Compatible with:
 - UID8451/10 wireless dimmer switch
 - SWS200 wireless scene switch
 - Battery powered IP42 presence sensor OCC sensor IA CM WH 10/1
 - Battery powered IP42 presence & daylight sensor OCC-DL sensor IA CM IP42 WH
 - Battery powered IP65 presence sensor OCC sensor IA CM IP65 WH
 - Battery powered IP65 presence & daylight sensor OCC-DL sensor IA CM IP65 WH
- For more information on Interact Pro visit: www.interact-lighting.com/interactproscalablesystem

Interact Pro Enterprise (Sensor bundle SB)

- A wireless IoT connected lighting solution for large enterprises that span across multiple floors, buildings and require multiple gateways.
- View all your projects under one dashboard and easily compare insights from multiple projects in one view.
- Compatible with UID8451/10 wireless dimmer switch, SWS200 wireless scene switch, wireless Occ sensor (OCC SENSOR IA CM IP42 WH 10/1) and wireless Day/Occ sensor (OCC MULTI SENSOR IA CM WH 10/1) and wireless Occupancy or Daylight & Occupancy sensors available.
- Use Interact software and insights to increase building efficiency, achieve building wide integration and optimize space through occupancy analytics.
- SB option in addition to occupancy and daylight sensing supports advanced IoT capabilities such as people estimation analysis, desk level temperature & humidity sensing, noise classification, and BLE beacon.
- Requires compatible Gateway and internet connectivity for commissioning.
- For more information, visit: www.interact-lighting.com/office or www.usa.lighting.philips.com/systems/system-areas/offices

SBA System bridge accessory wireless controller

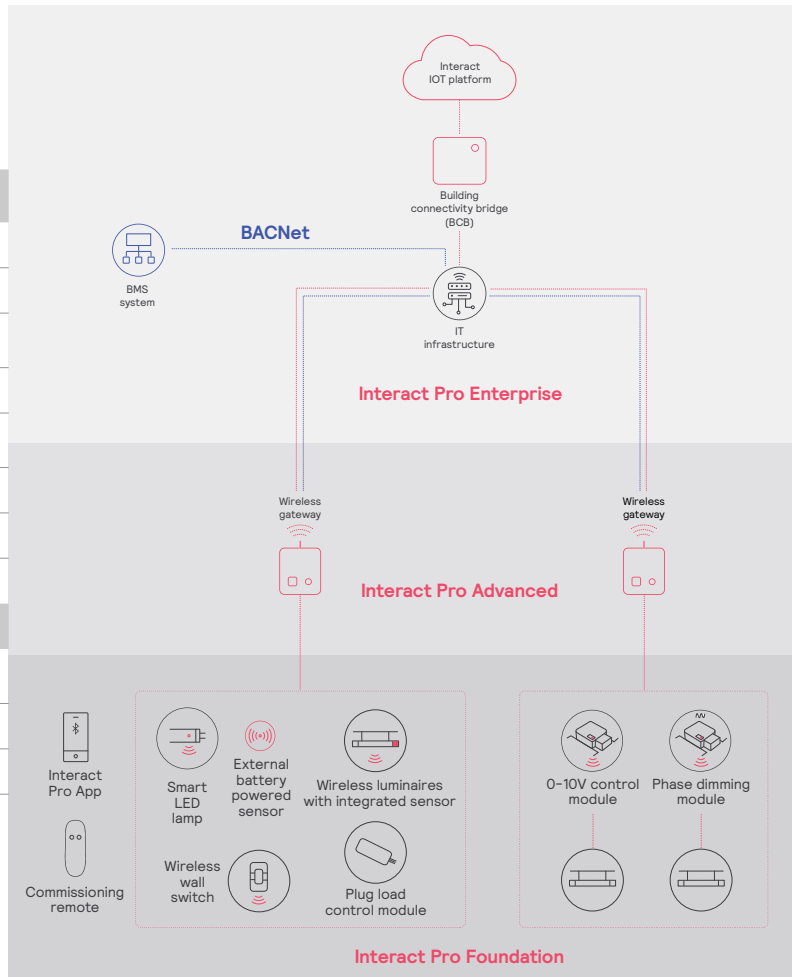
Interact compatible via bluetooth (like SpaceWise) or connected with gateway

Interact Pro scalable system			
	Foundation	Advanced	Enterprise
Dimming, grouping, and zoning	✓	✓	✓
Bluetooth and ZigBee enabled	✓	✓	✓
Motion sensing and daylight harvesting	✓	✓	✓
Integration with 0-10V and phase dimming fixtures	✓	✓	✓
Code compliance	✓	✓	✓
Granular dimming and dwell time	✓	✓	✓
Energy reporting and monitoring		✓	✓
Scheduling		✓	✓
Demand response		✓	✓
BMS integration (BACnet)			✓
Floor plan visualization			✓
IoT sensors for wellness			✓
IoT Apps for productivity			✓

Currently supported maximum system size

To be able to design the lighting system correctly for the customer, it is important to know the prime characteristics of the system, its possibilities and limitations.

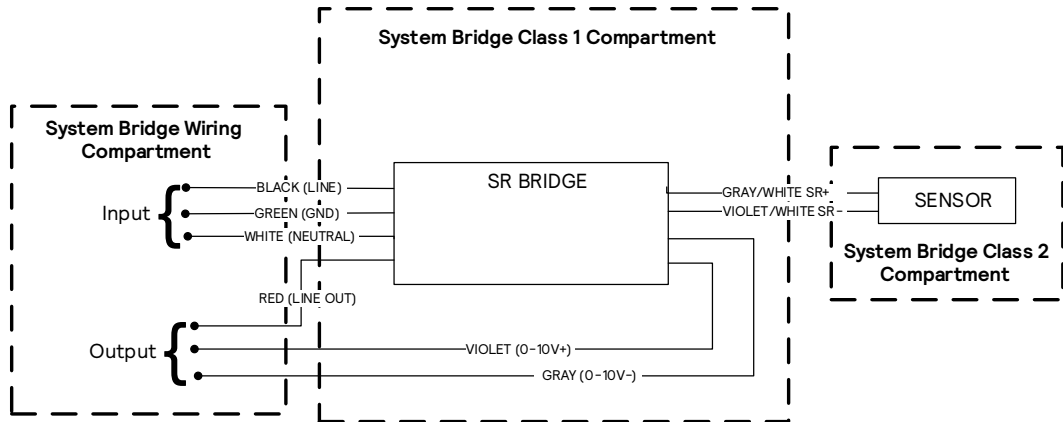
System level	
Total number of gateways	Unlimited
Total number of devices	200 per network
• luminaires with integrated sensors	150
• smart TLEDs	150
Total number of ZGP devices (sensors and switches)	50
• sensors	30
• switches	50
• zones and groups	64
Group level	
Recommended number of lights	40 (recommended 25)
Number of ZGP devices	5
Number of scenes	16



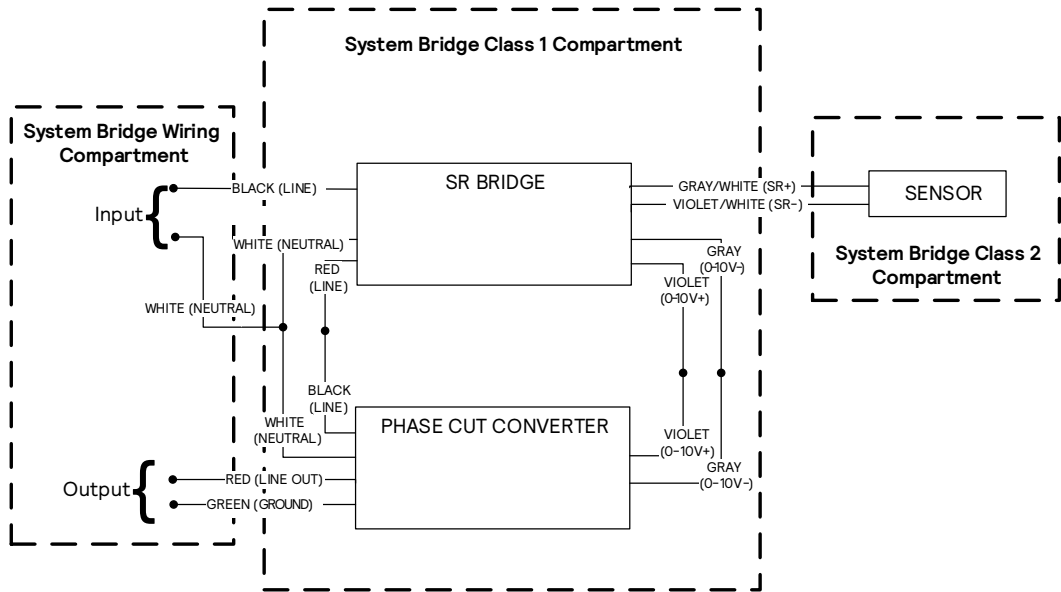
SBA System bridge accessory wireless controller

Interact compatible via bluetooth (like SpaceWise) or connected with gateway

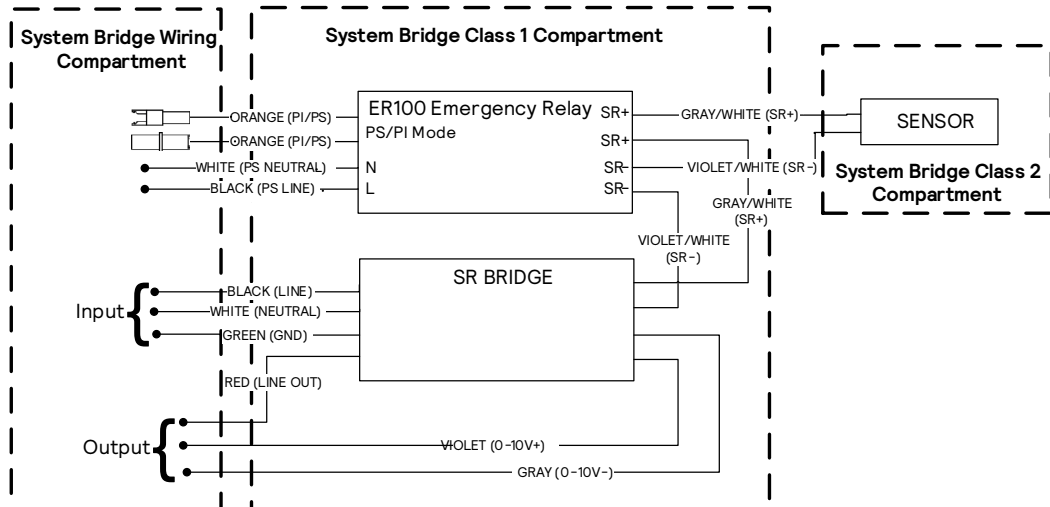
SBAZ10



SBAELV



SBAZ10-ER



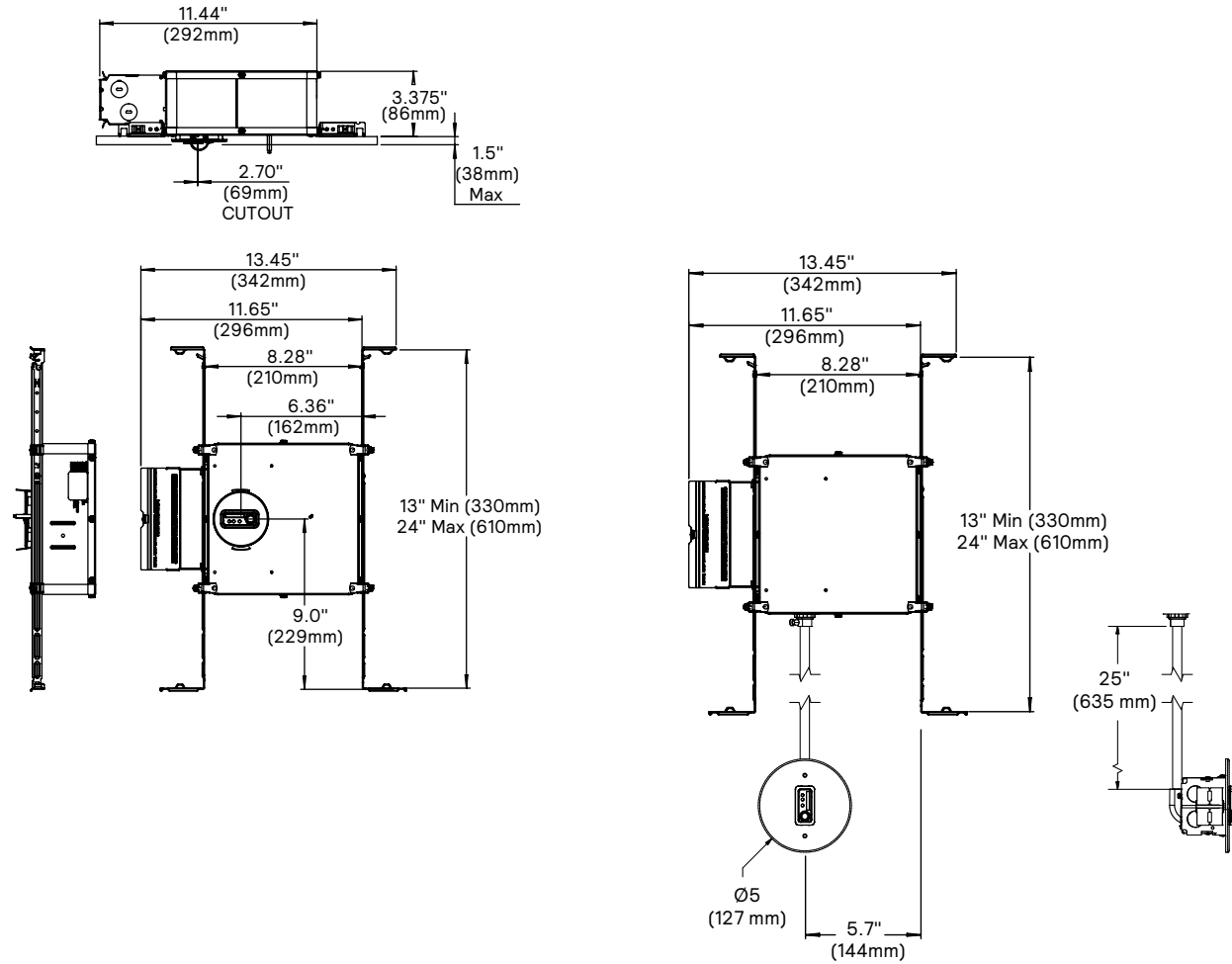
SBA System bridge accessory wireless controller

Interact compatible via bluetooth (like SpaceWise) or connected with gateway

Dimensions

Internal sensor configurations

Remote sensor configurations (-RS)



© 2021 Signify Holding. All rights reserved. The information provided herein is subject to change, without notice. Signify does not give any representation or warranty as to the accuracy or completeness of the information included herein and shall not be liable for any action in reliance thereon. The information presented in this document is not intended as any commercial offer and does not form part of any quotation or contract, unless otherwise agreed by Signify.



Signify North America Corporation
200 Franklin Square Drive,
Somerset, NJ 08873
Telephone 855-486-2216

Signify Canada Ltd.
281 Hillmount Road,
Markham, ON, Canada L6C 2S3
Telephone 800-668-9008

Philips and the Philips Shield Emblem are registered trademarks of Koninklijke Philips N.V. All other trademarks are owned by Signify Holding or their respective owners.