

A man with a beard is shown in a dark setting, reaching up to adjust a long, white LED light fixture mounted on a perforated ceiling. The background is blurred, showing other lights and the structure of the ceiling. The overall tone is professional and focused on energy efficiency.

**PHILIPS**



LED lamps

# Energy savings **that inspire**

2023 Q4 Edition

# The right light

Philips MasterClass, CorePro, and Contractor-grade tiers are designed to help professional lighting customers more quickly and easily identify the right product to fit any project or budget. For projects that require the quality, efficiency and value of Philips LED, the portfolio is organized into three categories:

**MasterClass**, **CorePro**, and **Contractor-grade**.

## Philips Contractor-grade

The Contractor line of LED lamps offers reliable, basic lighting that meets industry efficiency standards and delivers affordable solutions from a trust-worthy brand leader.

**Contractor, Basic, Stock**



### Provides the following:

- Focused portfolio enabling fast payback
- Standard features
- Lifetime starting at 11,000 hours
- Color rendering index (CRI) starting at 80

## Philips CorePro

The CorePro line of LEDs are perfect for value-added lighting needs across a wide range of applications, meets industry efficiency standards, and minimizes maintenance and energy costs for quick payback.

**Value, Professional, Standard**



### Provides the following:

- Up to 80% energy savings<sup>1</sup>
- More choices with our expanded portfolio
- Lower maintenance costs<sup>1</sup>
- Lifetime of 15,000+ hours<sup>3</sup>
- Color rendering index (CRI) 80+

## Philips MasterClass

The MasterClass line of LED lamps provides exceptional high-quality lighting that exceeds industry energy efficiency requirements, features improved lifespan, and offers unique quality features in many categories.

**Best, Performance, Excellence, Optimum, Innovative**



### Provides the following:

- Up to 80% energy savings<sup>1</sup>
- Expanded product breadth including additional beam angles and shapes when compared to traditional bulbs
- Lifetime of up to 70,000 hours and up to 7-year limited warranty<sup>2</sup>
- High color rendering index (CRI) 90+
- Superior polycarbonate material

1. When compared to traditional incandescent bulbs.

2. Visit [www.signify.com/warranties](http://www.signify.com/warranties) for details.

3. Tested to B50 L70 requirement. LED lifetime means the length of time (in hours) until half of the LED light sources maintain at least 70% of their initial lumen output (B50, L70).

# Contents



<b>MasterClass</b> MainsFit T8 (Type B) 1	<b>CorePro</b> PLED 14	<b>MasterClass</b> Corn Cob 16
<b>CorePro</b> MainsFit T5 & T8 (Type B) 2		<b>CorePro</b> Corn Cob 18
<b>MasterClass</b> InstantFit T5 & T8 (Type A/C) 6		<b>CorePro</b> Glass 20
<b>CorePro</b> InstantFit T5 (Type A/C) 8		<b>TrueForce</b> High Bay 21
<b>CorePro</b> DC-Fit T8 (Type C) 10		<b>TrueForce</b> Post Top 22
<b>MasterConnect</b> InstantFit T8 (Type A) 11		<b>CorePro</b> High Bay/Low Bay 23
<b>CorePro</b> FlexFit T8 (Type A+B) 12		
UniversalFit T8 (Type A) 13		



<b>MasterClass</b> ExpertColor PAR 24	<b>MasterClass</b> MR16 30	<b>MasterClass</b> Specialty 49
<b>MasterClass</b> TrueForce PAR 26	<b>CorePro</b> GU10 & MR16 31	
<b>CorePro</b> Plastic PAR 27	<b>MasterClass</b> AR111 32	
<b>CorePro</b> Glass PAR 28	<b>CorePro</b> Party A19 & PAR 33	
	<b>MasterClass</b> A-Shape 35	
	<b>CorePro</b> A-Shape 36	
	<b>Contractor-grade</b> A-Shape 38	
	<b>Reflectors</b> 40	
	<b>Decorative</b> A15 & S14 42	
	<b>MasterClass</b> Designer 43	
	Globes G16.5 & G25 44	
	Candles B11/BA11 & F15 46	
	UFO 48	

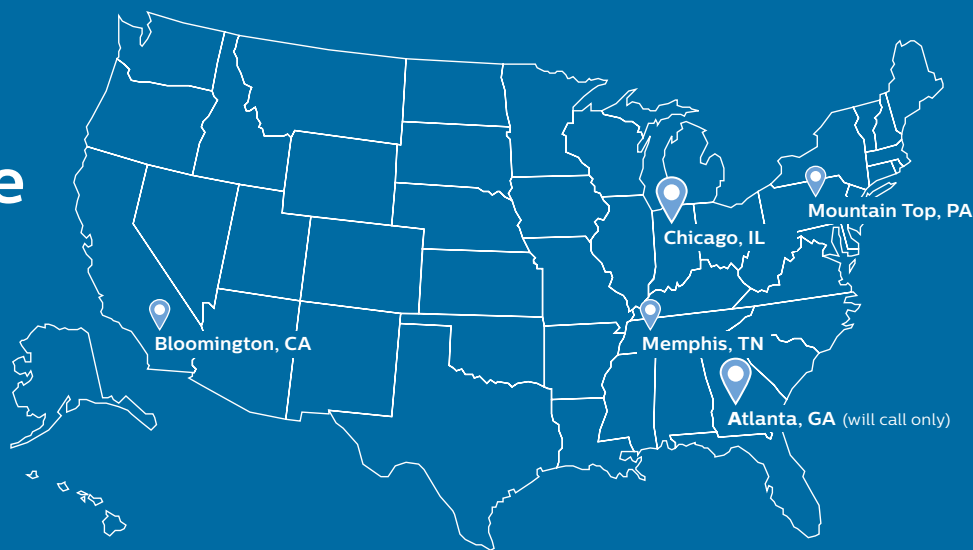


# A long history of excellence

As the global leader in lighting for more than 125 years, Signify has the know-how and most comprehensive portfolio to meet any application. We achieved 100% Carbon Neutrality in 2020. We are number 1 in conventional lamps, LED and Connected lighting. We have over 17,750 patents. We invest 4.8% of total sales in R&D which is two times our nearest competitor! Partnership is more than sales.

**Let's grow together. We are ready to go with you.**

**Quick and reliable service out of our distribution centers.**



## Find just what you need

Our Stock Ready portfolio makes it easy to find just what you need. Our products are designed for easy ordering through Signify's MyLighting portal, easy to install with minimal steps, and competitively priced to meet the demands of budget conscious projects focused on cost and energy. Distributors can also benefit from our Stock Ready program which offers deals on freight, guaranteed sales, price change reimbursement, delistment notifications, marketing support, merchandising, and more.

### Certifications & labels



# Stock up on our new field selectable products

With the unique convenience of adjustable color temperatures and/or lumen outputs, our new Field Selectable product lines make it easy to always have the right product for the job. Field Selectable products give you the added benefit of carrying one SKU versus multiple SKUs, keeping your inventory low and turns high. These product lines are priced right as part of our Ready-to-go offering.



**Lumen  
Select Switch**



**CCT with  
Select Switch**



## PHILIPS



**MainsFit CorePro TLED lamps**  
(UL Type-B) with selectable CCT



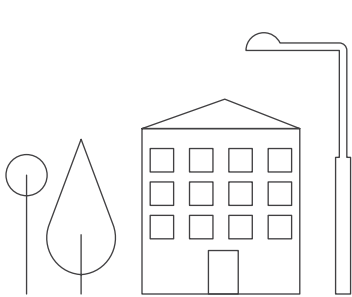
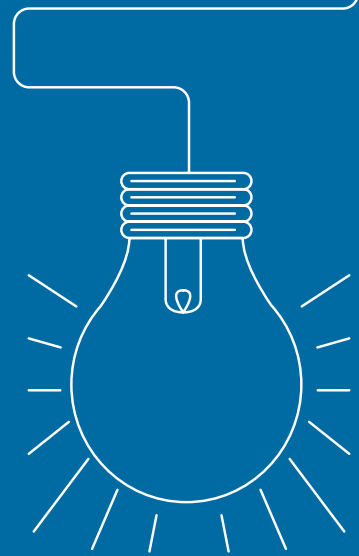
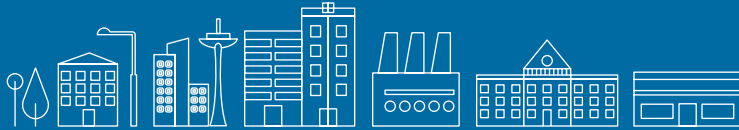
**MainsFit CorePro PLED lamps**  
with selectable CCT



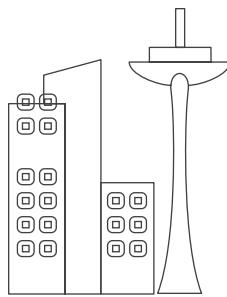
**MasterClass corn cob LED HID lamps**  
with dual selectable CCT & Lumens

# The right solution

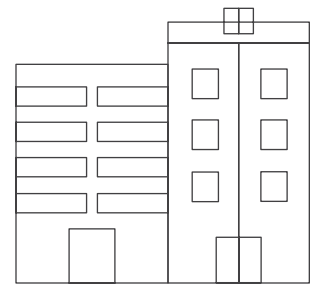
Philips provides the solution to every lighting need whether it's lighting and connecting your public spaces, giving your commercial building an energy saving upgrade, or working on a yet to be constructed hospital, we've got you covered.



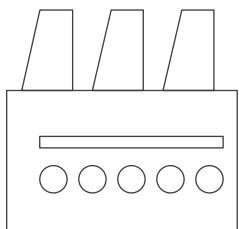
**Government**



**Cities**



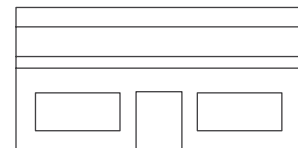
**Offices**



**Industry**



**Education**



**Retail**

## LED Tubes

### MasterClass MainsFit T8 (Type B)



Patented design prevents shock with surge protection



### Why choose MasterClass MainsFit T8 LED Tubes?

- Shatter-resistant lamps prevent breakage, not just contain the shattered glass
- Proven over 40% energy savings<sup>1</sup> over fluorescent systems
- Average life rating up to 70,000 hours<sup>2</sup>
- UL Type B ballast bypass double-ended
- Emergency capable with Philips PTB15D, Bodine ELI-S-20 or ELI-S-100 EM drivers
- Plastic tube construction

#### MasterClass MainsFit T8 (Type B) LED plastic tubes

Catalog Number	Model Number*	UPC Code	Product Description	Watts (W)	Base	CRI (min)	CCT (K)	Lifespan (hrs)	Lumens (lm)	Volts (V)	DLC ID	C/P Qty	Dist. Center
<b>MasterClass (Plastic) MainsFit (Type B) - T8 4ft</b>													
575480	929002325134	46677575489	10.5T8/MAS/48-835/MF15/P 10/1	10.5	G13	82	3500	70000	1550	120-277	P7ADB1B8	10/900	CA, TN, PA
575498	929002325234	46677575496	10.5T8/MAS/48-840/MF16/P 10/1	10.5	G13	82	4000	70000	1600	120-277	PAWQXZLG	10/900	CA, TN, PA
575506	929002325334	46677575502	10.5T8/MAS/48-850/MF16/P 10/1	10.5	G13	82	5000	70000	1600	120-277	PNSQUHUR	10/900	CA, TN, PA
575514	929002325434	46677575519	14.5T8/MAS/48-830/MF20/P 10/1	14.5	G13	82	3000	70000	2000	120-277	PKC3F284	10/900	TN
575522	929002325534	46677575526	14.5T8/MAS/48-835/MF20/P 10/1	14.5	G13	82	3500	70000	2000	120-277	PVMNRRGB	10/900	CA, TN, PA
575530	929002325634	46677575533	14.5T8/MAS/48-840/MF21/P 10/1	14.5	G13	82	4000	70000	2100	120-277	PHHILPJB	10/900	CA, TN, PA
575548	929002325734	46677575540	14.5T8/MAS/48-850/MF21/P 10/1	14.5	G13	82	5000	70000	2100	120-277	P7NU9OQ8	10/900	CA, TN, PA
575563	929002442434	46677575564	16.9T8/MAS/48-835/MF25/P 10/1	16.9	G13	82	4000	70000	2500	120-277	PCEVR8V0	10/900	TN
575571	929002442534	46677575571	16.9T8/MAS/48-850/MF25/P 10/1	16.9	G13	82	5000	70000	2500	120-277	PF18Z6UF	10/900	TN
<b>MasterClass (Plastic) MainsFit (Type B) - T8 4ft (New Version)</b>													
579441	929003525104	46677579449	10.5T8/MAS/48-835/MF15/P/DIM 25/1	10.5	G13	82	3500	70000	1550	120-277	S-573ND4	25/1575	CA, TN, PA
579458	929003525204	46677579456	10.5T8/MAS/48-840/MF16/P/DIM 25/1	10.5	G13	82	4000	70000	1600	120-277	S-QI8DGT	25/1575	CA, TN, PA
579466	929003525304	46677579463	10.5T8/MAS/48-850/MF16/P/DIM 25/1	10.5	G13	82	5000	70000	1600	120-277	S-7KSJBW	25/1575	CA, TN, PA
579474	929003525404	46677579470	14.5T8/MAS/48-830/MF20/P/DIM 25/1	14.5	G13	82	3000	70000	2000	120-277	S-YDCTVS	25/1575	TN
579482	929003525504	46677579487	14.5T8/MAS/48-835/MF20/P/DIM 25/1	14.5	G13	82	3500	70000	2000	120-277	S-085HQW	25/1575	CA, TN, PA
579490	929003525604	46677579494	14.5T8/MAS/48-840/MF21/P/DIM 25/1	14.5	G13	82	4000	70000	2100	120-277	S-RAUJDC	25/1575	CA, TN, PA
579508	929003525704	46677579500	14.5T8/MAS/48-850/MF21/P/DIM 25/1	14.5	G13	82	5000	70000	2100	120-277	S-4JUD6L	25/1575	CA, TN, PA
579516	929003525804	46677579517	16.5T8/MAS/48-835/MF24/P/DIM 25/1	16.5	G13	82	4000	70000	2500	120-277	S-A8FD2T	25/1575	TN
579524	929003525904	46677579524	16.5T8/MAS/48-840/MF25/P/DIM 25/1	16.5	G13	82	3500	70000	2450	120-277	S-B2KA75	25/1575	TN
579532	929003526004	46677579531	16.5T8/MAS/48-850/MF25/P/DIM 25/1	16.5	G13	82	5000	70000	2500	120-277	S-809PNW	25/1575	TN

1. Savings based on comparison to F32T8 electronic instant start systems.  
 2. Tested to B50 L70 requirement. LED lifetime means the length of time (in hours) until half of the LED light sources maintain at least 70% of their initial lumen output (B50, L70).  
 \* When searching for DLC or NSF listings, please use the first 10-digits only.



## LED Tubes

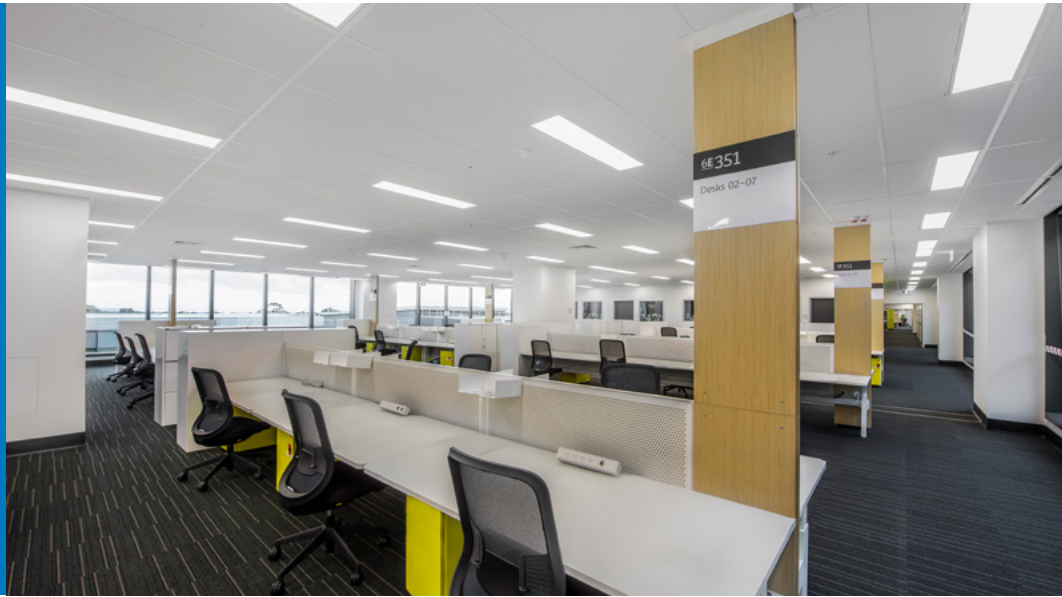
### CorePro MainsFit T5 (Type B) & T8 (Type B)

Patented design prevents shock with surge protection



## Why choose CorePro MainsFit T5 & T8 LED Tubes?

- Double-ended for faster installs
- Proven over 40% energy savings<sup>1</sup> over fluorescent systems
- Average life rating of 50,000 hours<sup>2</sup>
- UL Type B ballast bypass
- Emergency capable with Philips PTB15D, Bodine ELI-S-20 or ELI-S-100 EM drivers
- Glass tube construction



## CorePro MainsFit T5 & T8 (Type B) LED glass tubes

Catalog Number	Model Number*	UPC Code	Product Description	Watts (W)	Base	CRI (min)	CCT (K)	Lifespan (hrs)	Lumens (lm)	Volts (V)	DLC ID	C/P Qty	Dist. Center
<b>CorePro MainsFit (Type B) – T5 2ft</b>													
576140	929003122704	46677576141	8T5HE/COR/22-835/MF10/G 25/1	8	G5	82	3500	50000	1000	120-277	No Category	25/2100	–
576157	929003122804	46677576158	8T5HE/COR/22-840/MF10/G 25/1	8	G5	82	4000	50000	1050	120-277	No Category	25/2100	–
576165	929003122904	46677576165	8T5HE/COR/22-850/MF10/G 25/1	8	G5	82	5000	50000	1050	120-277	No Category	25/2100	PA
<b>CorePro MainsFit (Type B) – T5 3ft</b>													
576173	929003123004	46677576172	10T5HE/COR/34-835/MF13/G 25/1	10	G5	82	3500	50000	1300	120-277	No Category	25/1200	–
576181	929003123104	46677576189	10T5HE/COR/34-840/MF14/G 25/1	10	G5	82	4000	50000	1400	120-277	No Category	25/1200	–
576199	929003123204	46677576196	10T5HE/COR/34-850/MF14/G 25/1	10	G5	82	5000	50000	1400	120-277	No Category	25/1200	–
<b>CorePro MainsFit (Type B) – T5 4ft</b>													
576207	929003123304	46677576202	14T5HE/COR/46-835/MF20/G 25/1	14	G5	82	3500	50000	2000	120-277	PQ7H051Y	25/1050	–
576215	929003123404	46677576219	14T5HE/COR/46-840/MF21/G 25/1	14	G5	82	4000	50000	2100	120-277	P7NL3V16	25/1050	–
576223	929003123504	46677576226	14T5HE/COR/46-850/MF21/G 25/1	14	G5	82	5000	50000	2100	120-277	PDJMHU1	25/1050	–
576231	929003122404	46677576233	25T5HO/COR/46-835/MF33/G 25/1	25	G5	80	3500	50000	3300	120-277	PY2MWDXX	25/1050	PA
576249	929003122504	46677576240	25T5HO/COR/46-840/MF35/G 25/1	25	G5	82	4000	50000	3500	120-277	POSBWIPB	25/1050	CA, TN, PA
576256	929003122604	46677576257	25T5HO/COR/46-850/MF35/G 25/1	25	G5	82	5000	50000	3500	120-277	PKPRHYX	25/1050	CA, TN, PA
<b>CorePro MainsFit (Type B) – T8 2ft</b>													
535450	929001933804	46677535452	8.5T8/COR/24-830/MF11/G 10/1	8.5	G13	80	3000	50000	1100	120-277	PSB5JDM7	10/900	TN
535468	929001933904	46677535469	8.5T8/COR/24-835/MF11/G 10/1	8.5	G13	80	3500	50000	1100	120-277	PKG7DURA	10/900	TN, PA
535476	929001934004	46677535476	8.5T8/COR/24-840/MF11/G 10/1	8.5	G13	80	4000	50000	1150	120-277	PRGU80IY	10/900	CA, TN, PA
535484	929001934104	46677535483	8.5T8/COR/24-850/MF11/G 10/1	8.5	G13	82	5000	50000	1150	120-277	PEQHTIDN	10/900	TN

1. Savings based on comparison to F32T8 electronic instant start systems.

2. Tested to B50 L70 requirement. LED lifetime means the length of time (in hours) until half of the LED light sources maintain at least 70% of their initial lumen output (B50, L70).

\* When searching for DLC or NSF listings, please use the first 10-digits only.





## LED Tubes

### CorePro MainsFit T8 (Type B)



(continued)

#### CorePro MainsFit T8 (Type B) LED glass tubes

Catalog Number	Model Number*	UPC Code	Product Description	Watts (W)	Base	CRI (min)	CCT (K)	Lifespan (hrs)	Lumens (lm)	Volts (V)	DLC ID	C/P Qty	Dist. Center
<b>CorePro MainsFit (Type B) – T8 3ft</b>													
535492	929001934204	46677535490	11.5T8/COR/36-830/MF13/G 10/1	11.5	G13	82	3000	50000	1300	120-277	PEKX8MHK	10/540	TN
535500	929001934304	46677535506	11.5T8/COR/36-835/MF13/G 10/1	11.5	G13	82	3500	50000	1300	120-277	P51PGWYW	10/540	TN
535518	929001934404	46677535513	11.5T8/COR/36-840/MF14/G 10/1	11.5	G13	82	4000	50000	1400	120-277	PDESZ0HQ	10/540	CA, TN, PA
535526	929001934504	46677535520	11.5T8/COR/36-850/MF14/G 10/1	11.5	G13	82	5000	50000	1400	120-277	P6A2TN9L	10/540	TN
<b>CorePro MainsFit (Type B) – T8 4ft</b>													
563452	929002483704	46677563455	9.9T8/COR/48-835/MF15/G 10/1	9.9	G13	80	3500	50000	1500	120-277	RJWBAG7L	10/780	CA, TN, PA
563460	929002483804	46677563462	9.9T8/COR/48-840/MF16/G 10/1	9.9	G13	80	4000	50000	1650	120-277	P4GNLB60	10/780	CA, TN, PA
563478	929002483904	46677563479	9.9T8/COR/48-850/MF16/G 10/1	9.9	G13	80	5000	50000	1650	120-277	PNRHR3CT	10/780	CA, TN, PA
563486	929002484004	46677563486	12T8/COR/48-830/MF17/G 10/1	12	G13	80	3000	50000	1700	120-277	PUHH09G9	10/650	TN
563494	929002484104	46677563493	12T8/COR/48-835/MF17/G 10/1	12	G13	80	3500	50000	1700	120-277	P81MG6WR	10/650	CA, TN, PA
563502	929002484204	46677563509	12T8/COR/48-840/MF18/G 10/1	12	G13	80	4000	50000	1800	120-277	PXKUDN50	10/650	CA, TN, PA
563510	929002484304	46677563516	12T8/COR/48-850/MF18/G 10/1	12	G13	80	5000	50000	1800	120-277	PVDFRFDJ	10/650	CA, TN, PA
563528	929002484404	46677563523	14.5T8/COR/48-830/MF20/G 10/1	14.5	G13	80	3000	50000	2000	120-277	P1ZMQ2EC	10/650	CA, TN, PA
563536	929002484504	46677563530	14.5T8/COR/48-835/MF20/G 10/1	14.5	G13	80	3500	50000	2000	120-277	PWUOJVW	10/650	CA, TN, PA
563544	929002484604	46677563547	14.5T8/COR/48-840/MF21/G 10/1	14.5	G13	80	4000	50000	2100	120-277	P7YG70L7	10/650	CA, TN, PA
563551	929002484704	46677563554	14.5T8/COR/48-850/MF21/G 10/1	14.5	G13	80	5000	50000	2100	120-277	PDR4QQQZ	10/650	CA, TN, PA
<b>CorePro MainsFit (Type B) – T8 4ft (New Version)</b>													
579318	929003523704	46677579319	9.9T8/COR/48-835/MF15/G/DIM 25/1	9.9	G13	80	3500	50000	1500	120-277	S-RCNBD2	25/900	CA, TN, PA
579326	929003523804	46677579326	9.9T8/COR/48-840/MF16/G/DIM 25/1	9.9	G13	80	4000	50000	1650	120-277	S-4GP25S	25/900	CA, TN, PA
579334	929003523904	46677579333	9.9T8/COR/48-850/MF16/G/DIM 25/1	9.9	G13	80	5000	50000	1650	120-277	S-Q9GJNX	25/900	CA, TN, PA
579342	929003524104	46677579340	12T8/COR/48-830/MF17/G/DIM 25/1	12	G13	80	3000	50000	1700	120-277	S-J006SY	25/900	TN
579359	929003524204	46677579357	12T8/COR/48-835/MF17/G/DIM 25/1	12	G13	80	3500	50000	1700	120-277	S-60HQAZ	25/900	CA, TN, PA
579383	929003524304	46677579388	12T8/COR/48-840/MF18/G/DIM 25/1	12	G13	80	4000	50000	1800	120-277	S-YDPV25	25/900	CA, TN, PA
579391	929003524404	46677579395	12T8/COR/48-850/MF18/G/DIM 25/1	12	G13	80	5000	50000	1800	120-277	S-E47N92	25/900	CA, TN, PA
579409	929003524604	46677579401	14.5T8/COR/48-830/MF20/G/DIM 25/1	14.5	G13	80	3000	50000	2000	120-277	S-VCHUQY	25/900	CA, TN, PA
579417	929003524704	46677579418	14.5T8/COR/48-835/MF20/G/DIM 25/1	14.5	G13	80	3500	50000	2000	120-277	S-4AS9KG	25/900	CA, TN, PA
579425	929003524804	46677579425	14.5T8/COR/48-840/MF21/G/DIM 25/1	14.5	G13	80	4000	50000	2100	120-277	S-25VAIG	25/900	CA, TN, PA
579433	929003524904	46677579432	14.5T8/COR/48-850/MF21/G/DIM 25/1	14.5	G13	80	5000	50000	2100	120-277	S-N68XAH	25/900	CA, TN, PA
<b>CorePro MainsFit Color Adjustable (Type B) – T8 4ft</b>													
579672	929003540104	46677579678	14.5T8/COR/48-5CCT/MF18/G/DIM 25/1	14.5	G13	80	3000/3500/4000/5000/6500	50000	1800	120-277	S-6F4RWZ	25/900	PA
<b>Contractor Grade MainsFit (Type B) – T8 4ft</b>													
577767	929003474504	46677577766	14.5T8/CNG/48-835/MF17/G 25/1	14.5	G13	80	3500	50000	1750	120-277	PHBJTIQF	25/900	CA, TN, PA
577775	929003474604	46677577773	14.5T8/CNG/48-840/MF18/G 25/1	14.5	G13	80	4000	50000	1800	120-277	PAL56OQ3	25/900	CA, TN, PA
577783	929003474704	46677577780	14.5T8/CNG/48-850/MF18/G 25/1	14.5	G13	80	5000	50000	1800	120-277	PFHOVHZ7	25/900	CA, TN, PA
577791	929003474804	46677577797	14.5T8/CNG/48-865/MF18/G 25/1	14.5	G13	80	6500	50000	1800	120-277	PS3GBS4Q	25/900	CA, TN, PA
579045	929003510604	46677579043	16.5T8/CNG/48-835/MF20/G 25/1	16.5	G13	80	3500	50000	2000	120-277	PWH5DXIO	25/900	CA, TN, PA
579052	929003510704	46677579050	16.5T8/CNG/48-840/MF21/G 25/1	16.5	G13	80	4000	50000	2100	120-277	PCJUDVTN	25/900	CA, TN, PA
579060	929003510804	46677579067	16.5T8/CNG/48-850/MF21/G 25/1	16.5	G13	80	5000	50000	2100	120-277	PYDXK24N	25/900	CA, TN, PA
<b>CorePro MainsFit (Type B) – T8 2ft &amp; 4ft BAA</b>													
563759	929002497904	46677563752	8.5T8/COR/24-835/MF11/G/BAA 25/1	8.5	G13	80	3500	50000	1100	120-277	P3VDJ660	25/4900	TN
563767	929002498004	46677563769	8.5T8/COR/24-840/MF11/G/BAA 25/1	8.5	G13	80	4000	50000	1150	120-277	PRYWLKTL	25/4900	TN
563775	929002498104	46677563776	8.5T8/COR/24-850/MF11/G/BAA 25/1	8.5	G13	80	5000	50000	1150	120-277	PGEDUIOL	25/4900	TN
563692	929002497304	46677563691	11T8/COR/48-835/MF16/G/BAA 25/1	11	G13	80	3500	50000	1650	120-277	RJ4EZ7G1	25/2100	TN
563700	929002497404	46677563707	11T8/COR/48-840/MF16/G/BAA 25/1	11	G13	80	4000	50000	1650	120-277	PG2FHJSS	25/2100	TN
563718	929002497504	46677563714	11T8/COR/48-850/MF16/G/BAA 25/1	11	G13	80	5000	50000	1650	120-277	POB4SOUW	25/2100	TN

1. Savings based on comparison to F32T8 electronic instant start systems.  
 2. Tested to B50 L70 requirement. LED lifetime means the length of time (in hours) until half of the LED light sources maintain at least 70% of their initial lumen output (B50, L70).  
 \* When searching for DLC or NSF listings, please use the first 10-digits only.



## LED Tubes

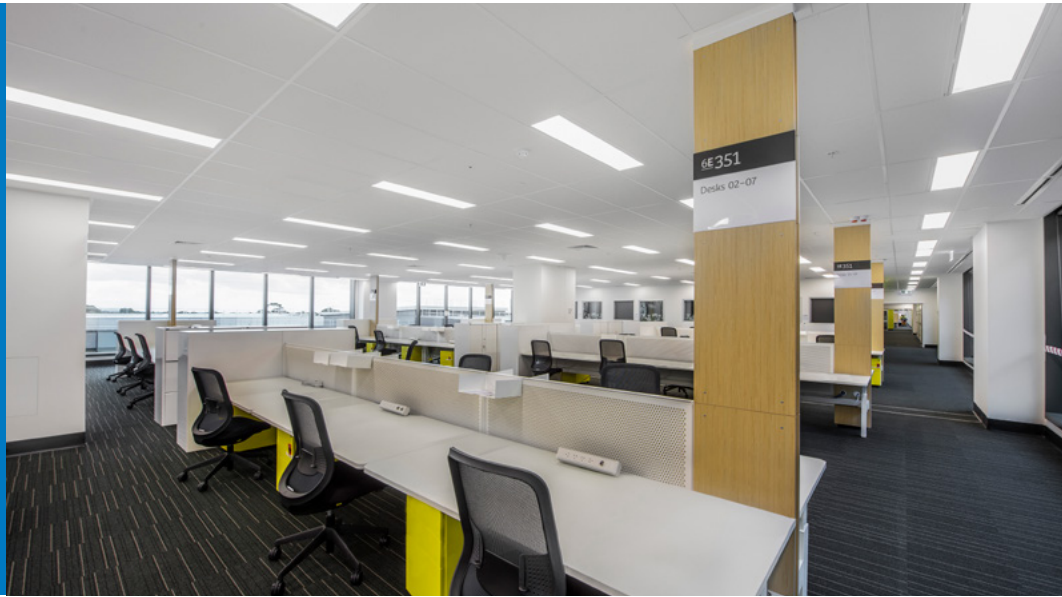
### CorePro MainsFit T5 (Type B) & T8 (Type B)



(continued)

## Why choose CorePro MainsFit T5 & T8 LED Tubes?

- Double-ended for faster installs
- Proven over 40% energy savings<sup>1</sup> over fluorescent systems
- Average life rating of 50,000 hours<sup>2</sup>
- UL Type B ballast bypass
- Emergency capable with Philips PTB15D, Bodine ELI-S-20 or ELI-S-100 EM drivers
- Glass tube construction



## CorePro MainsFit T5 & T8 (Type B) LED glass tubes

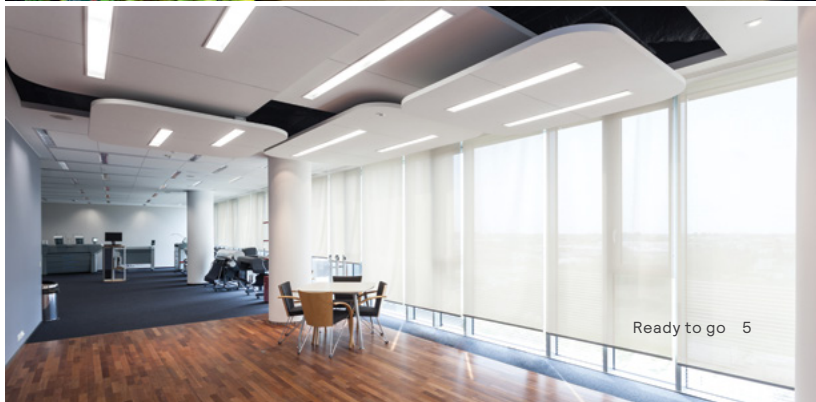
Catalog Number	Model Number*	UPC Code	Product Description	Watts (W)	Base	CRI (min)	CCT (K)	Lifespan (hrs)	Lumens (lm)	Volts (V)	DLC ID	C/P Qty	Dist. Center
<b>CorePro MainsFit (Type B) – T8 2ft &amp; 4ft BAA (continued)</b>													
563726	929002497604	46677563721	15.5T8/COR/48-835/MF21/G/BAA 25/1	15.5	G13	80	3500	50000	2100	120-277	PNGBA9A0	25/2100	TN
563734	929002497704	46677563738	15.5T8/COR/48-840/MF21/G/BAA 25/1	15.5	G13	80	4000	50000	2100	120-277	PGKNR9IL	25/2100	TN
563742	929002497804	46677563745	15.5T8/COR/48-850/MF21/G/BAA 25/1	15.5	G13	80	5000	50000	2100	120-277	PA74ZVER	25/2100	TN
<b>CorePro MainsFit (Type B) – T8 8ft</b>													
575134	929003099404	46677575137	42T8HO/COR/96-840/MF54/G/FA8 10/1	42	FA8	82	4000	50000	5400	120-277	PNV8L83H	10/500	CA, TN, PA
575142	929003099504	46677575144	42T8HO/COR/96-850/MF54/G/FA8 10/1	42	FA8	82	5000	50000	5400	120-277	P2NCH72N	10/500	CA, TN, PA
575720	929003112104	46677575724	33T8/COR/96-840/MF44/G/FA8 10/1	33	FA8	82	4000	50000	4400	120-277	P6R7QGS1	10/500	CA, TN, PA
575738	929003112204	46677575731	33T8/COR/96-850/MF44/G/FA8 10/1	33	FA8	82	5000	50000	4400	120-277	PAQO0F05	10/500	CA, TN, PA
575746	929003112304	46677575748	42T8HO/COR/96-840/MF54/G/R17d 10/1	42	R17d	82	4000	50000	5400	120-277	No Category	10/500	CA, TN, PA
575753	929003112404	46677575755	42T8HO/COR/96-850/MF54/G/R17d 10/1	42	R17d	82	5000	50000	5400	120-277	No Category	10/500	CA, TN, PA
<b>CorePro MainsFit (Type B) – T8 Ubend</b>													
535534	929001934604	46677535537	15.5T8-6U/COR/24-830/MF20/G 10/1	15.5	G13	82	3000	50000	2000	120-277	PAL67QJK	10/250	TN
535542	929001934704	46677535544	15.5T8-6U/COR/24-835/MF20/G 10/1	15.5	G13	82	3500	50000	2000	120-277	PVKJRY18	10/250	TN
535559	929001934804	46677535551	15.5T8-6U/COR/24-840/MF21/G 10/1	15.5	G13	82	4000	50000	2100	120-277	PUAR19X3	10/250	CA, TN, PA
535567	929001934904	46677535568	15.5T8-6U/COR/24-850/MF21/G 10/1	15.5	G13	82	5000	50000	2100	120-277	PMKCEPRN	10/250	TN

1. Savings based on comparison to F32T8 electronic instant start systems.

2. Tested to B50 L70 requirement. LED lifetime means the length of time (in hours) until half of the LED light sources maintain at least 70% of their initial lumen output (B50, L70).

\* When searching for DLC or NSF listings, please use the first 10-digits only.





## LED Tubes

### MasterClass InstantFit T5 & T8 (Type A/C)



Shatter-resistant lamps  
prevent breakage

## Why choose MasterClass InstantFit T5 & T8 LED Tubes?

- Works with more ballasts and drivers than any other lamp so it's going to perform as expected and prevent rework
- Proven over 40% energy savings<sup>1</sup> over fluorescent for continual payback over the life of the product
- Average life rating up to 70,000 hours<sup>2</sup>
- Lamps can be used as either Type A or Type C lamps<sup>3</sup>
- Plastic tube construction



## MasterClass InstantFit T5 & T8 (Type A/C) LED plastic tubes

Catalog Number	Model Number*	UPC Code	Product Description	Watts (W)	Base	CRI (min)	CCT (K)	Lifespan (hrs)	Lumens (lm)	Volts (V)	DLC ID	C/P Qty	Dist. Center
<b>MasterClass (Plastic) InstantFit (Type A) - T5 4ft</b>													
467134	929001283804	46677467135	24T5HO/46-835/IF33/P/DIM 10/1	24	G5	82	3500	50000	3300	Ballast Dependent	PR7H998W	10/2000	CA, TN, PA
467142	929001283904	46677467142	24T5HO/46-840/IF35/P/DIM 10/1	24	G5	82	4000	50000	3500	Ballast Dependent	PUFNVUMP	10/2000	CA, TN, PA
467159	929001284004	46677467159	24T5HO/46-850/IF35/P/DIM 10/1	24	G5	82	5000	50000	3500	Ballast Dependent	RJHYX3QV	10/2000	CA, TN, PA
<b>MasterClass (Plastic) InstantFit (Type A/C) - T8 2ft</b>													
541813	929001986904	46677541811	7T8/MAS/24-830/IF10/P/DIM 10/1	7	G13	80	3000	70000	1050	Ballast Dependent	P604TTJI	10/2380	TN
541821	929001987004	46677541828	7T8/MAS/24-835/IF10/P/DIM 10/1	7	G13	80	3500	70000	1050	Ballast Dependent	PTFG2KIH	10/2380	CA, TN, PA
541839	929001987104	46677541835	7T8/MAS/24-840/IF11/P/DIM 10/1	7	G13	80	4000	70000	1150	Ballast Dependent	PNFV1220	10/2380	CA, TN, PA
541847	929001987204	46677541842	7T8/MAS/24-850/IF11/P/DIM 10/1	7	G13	80	5000	70000	1150	Ballast Dependent	PSUTWB50	10/2380	CA, TN, PA
<b>MasterClass (Plastic) InstantFit (Type A/C) - T8 3ft</b>													
539858	929001967504	46677539856	8.5T8/MAS/36-830/IF13/P/DIM 10/1	8.5	G13	80	3000	70000	1300	Ballast Dependent	PT8ANY27	10/1530	PA, TN
539866	929001967904	46677539863	8.5T8/MAS/36-835/IF13/P/DIM 10/1	8.5	G13	80	3500	70000	1300	Ballast Dependent	P3WOXMJG	10/1530	CA, TN, PA
539874	929001967604	46677539870	8.5T8/MAS/36-840/IF14/P/DIM 10/1	8.5	G13	80	4000	70000	1400	Ballast Dependent	PNZ6ODAV	10/1530	CA, TN, PA
539882	929001967704	46677539887	8.5T8/MAS/36-850/IF14/P/DIM 10/1	8.5	G13	80	5000	70000	1400	Ballast Dependent	PUDMU6QC	10/1530	TN

1. Savings based on comparison to F28T5 electronic instant start systems.  
 2. Tested to B50 L70 requirement. LED lifetime means the length of time (in hours) until half of the LED light sources maintain at least 70% of their initial lumen output (B50, L70).  
 3. Type A when paired with a ballast. Type C when paired with a TLED driver.  
 \* When searching for DLC or NSF listings, please use the first 10-digits only.





(continued)

#### MasterClass InstantFit T5 & T8 (Type A/C) LED plastic tubes

Catalog Number	Model Number*	UPC Code	Product Description	Watts (W)	Base	CRI (min)	CCT (K)	Lifespan (hrs)	Lumens (lm)	Volts (V)	DLC ID	C/P Qty	Dist. Center
<b>MasterClass (Plastic) InstantFit (Type A/C) - T8 4ft</b>													
565580	929003025304	46677565589	8.9T8/MAS/48-830/IF15/P/DIM 10/1	8.9	G13	80	3000	70000	1500	Ballast Dependent	PTD1V27Q	10/1190	CA, TN, PA
565598	929003025404	46677565596	8.9T8/MAS/48-835/IF15/P/DIM 10/1	8.9	G13	80	3500	70000	1500	Ballast Dependent	PCYCNPOO	10/1190	CA, TN, PA
565606	929003025504	46677565602	8.9T8/MAS/48-840/IF16/P/DIM 10/1	8.9	G13	80	4000	70000	1600	Ballast Dependent	P1GPHJTW	10/1190	CA, TN, PA
565614	929003025604	46677565619	8.9T8/MAS/48-850/IF16/P/DIM 10/1	8.9	G13	80	5000	70000	1600	Ballast Dependent	PTB8BS59	10/1190	CA, TN, PA
473926	929001397634	46677473921	13T8/MAS/48-830/IF20/P/DIM 10/1	13	G13	82	3000	70000	2000	Ballast Dependent	PFUBZ76C	10/1190	CA, TN, PA
473934	929001397734	46677473938	13T8/MAS/48-835/IF20/P/DIM 10/1	13	G13	82	3500	70000	2000	Ballast Dependent	P3WDP0ZD	10/1190	CA, TN, PA
473942	929001397834	46677473945	13T8/MAS/48-840/IF21/P/DIM 10/1	13	G13	82	4000	70000	2100	Ballast Dependent	PPSOM8AQ	10/1190	CA, TN, PA
473958	929001397934	46677473952	13T8/MAS/48-850/IF21/P/DIM 10/1	13	G13	82	5000	70000	2100	Ballast Dependent	POSZ7HFJ	10/1190	CA, TN, PA
545178	929002016204	46677545178	15.5T8/MAS/48-830/IF23/P/DIM 25/1	15.5	G13	83	3000	70000	2500	Ballast Dependent	PNKIZ638	25/1400	CA, TN, PA
533372	929002016304	46677545185	15.5T8/MAS/48-835/IF24/P/DIM 25/1	15.5	G13	82	3500	70000	2400	Ballast Dependent	P51ZCP75	25/1400	CA, TN, PA
545194	929002016404	46677545192	15.5T8/MAS/48-840/IF25/P/DIM 25/1	15.5	G13	82	4000	70000	2500	Ballast Dependent	PCYKJVJSI	25/1400	CA, TN, PA
545200	929002016504	46677545208	15.5T8/MAS/48-850/IF25/P/DIM 25/1	15.5	G13	82	5000	70000	2500	Ballast Dependent	POHK0Y9Y	25/1400	CA, TN, PA
<b>MasterClass (Plastic) InstantFit (Type A/C) - T8 6ft U-bend</b>													
541854	929001987404	46677541859	13T8-6U/MAS/24-830/IF20/P/DIM 10/1	13	G13	82	3000	70000	2000	Ballast Dependent	P67SZONC	10/400	TN
541862	929001987504	46677541866	13T8-6U/MAS/24-835/IF20/P/DIM 10/1	13	G13	82	3500	70000	2000	Ballast Dependent	PQ9KE4CE	10/400	CA, TN, PA
541870	929001987604	46677541873	13T8-6U/MAS/24-840/IF21/P/DIM 10/1	13	G13	82	4000	70000	2100	Ballast Dependent	PZX06205	10/400	CA, TN, PA
541888	929001987704	46677541880	13T8-6U/MAS/24-850/IF21/P/DIM 10/1	13	G13	82	5000	70000	2100	Ballast Dependent	PA8813S4	10/400	PA, TN
<b>MasterClass (Plastic) InstantFit (Type A) - T8 8ft</b>													
469247	929001307804	46677472573	35T8/96-3500 IF FA8 10/1	35	FA8	82	3500	50000	4000	Ballast Dependent	Not DLC	10/300	PA, TN
469254	929001314604	46677472580	35T8/96-4000 IF FA8 10/1	35	FA8	82	4000	50000	4200	Ballast Dependent	Not DLC	10/300	CA, TN, PA

- Savings based on comparison to F28T5 electronic instant start systems.
  - Tested to B50 L70 requirement. LED lifetime means the length of time (in hours) until half of the LED light sources maintain at least 70% of their initial lumen output (B50, L70).
  - Type A when paired with a ballast. Type C when paired with a TLED driver.
- \* When searching for DLC or NSF listings, please use the first 10-digits only.



## LED Tubes

### CorePro InstantFit T5 (Type A/C)



Most lamps are DLC listed and all are NSF listed

## Why choose CorePro InstantFit T5 & T8 LED Tubes?

- Works with more ballasts and drivers than any other lamp so it's going to perform as expected and prevent rework
- Proven over 40% energy savings<sup>1</sup> over fluorescent for continual payback over the life of the product
- Average life rating of 50,000 hours<sup>2</sup>
- No mercury allowing for non-hazardous waste disposal
- Glass tube construction



### CorePro InstantFit T5 (Type A/C) LED glass tubes

Catalog Number	Model Number*	UPC Code	Product Description	Watts (W)	Base	CRI (min)	CCT (K)	Lifespan (hrs)	Lumens (lm)	Volts (V)	DLC ID	C/P Qty	Dist. Center
<b>CorePro InstantFit (Type A) - T5 2ft</b>													
476416	929001823104	46677476410	8T5HE/22-830/IF10/G/DIM 10/1	8	G5	80	3000	50000	1000	120	No Category	10/1560	TN
476424	929001823204	46677476427	8T5HE/22-835/IF10/G/DIM 10/1	8	G5	80	3500	50000	1000	120	No Category	10/1560	PA, TN
476432	929001823304	46677476434	8T5HE/22-840/IF10/G/DIM 10/1	8	G5	80	4000	50000	1050	120	No Category	10/1560	CA, TN, PA
476440	929001823404	46677476441	8T5HE/22-850/IF10/G/DIM 10/1	8	G5	80	5000	50000	1050	120	No Category	10/1560	TN
<b>CorePro InstantFit (Type A) - T5 3ft</b>													
476457	929001823504	46677476458	11T5HE/34-830/IF14/G/DIM 10/1	11	G5	82	3000	50000	1400	50-80	No Category	10/910	TN
476465	929001823604	46677476465	11T5HE/34-835/IF14/G/DIM 10/1	11	G5	82	3500	50000	1400	50-80	No Category	10/910	PA, TN
476473	929001823704	46677476472	11T5HE/34-840/IF15/G/DIM 10/1	11	G5	82	4000	50000	1500	50-80	No Category	10/910	CA, TN, PA
476481	929001823804	46677476489	11T5HE/34-850/IF15/G/DIM 10/1	11	G5	82	5000	50000	1500	50-80	No Category	10/910	TN
<b>CorePro InstantFit (Type A) - T5 4ft</b>													
476499	929001823904	46677476496	14T5HE/46-830/IF20/G/DIM 10/1	14	G5	82	3000	50000	2000	70-105	PI0H91X1	10/780	TN
476507	929001824004	46677476502	14T5HE/46-835/IF20/G/DIM 10/1	14	G5	82	3500	50000	2000	70-105	PX50DKZF	10/780	CA, TN, PA
476515	929001824104	46677476519	14T5HE/46-840/IF21/G/DIM 10/1	14	G5	82	4000	50000	2100	70-105	P2RN9SKT	10/780	CA, TN, PA
476523	929001824204	46677476526	14T5HE/46-850/IF21/G/DIM 10/1	14	G5	82	5000	50000	2100	70-105	PLAEVGF0	10/780	PA, TN
576710	929003134004	46677576714	24T5HO/COR/46-835/IF33/G/DIM 25/1	24	G5	82	3500	50000	3300	120-277	PSRB7930	25/1200	TN
576736	929003134104	46677576738	24T5HO/COR/46-840/IF35/G/DIM 25/1	24	G5	82	4000	50000	3500	120-277	PDUJHUAM	25/1200	CA, TN, PA
576744	929003134204	46677576745	24T5HO/COR/46-850/IF35/G/DIM 25/1	24	G5	82	5000	50000	3500	120-277	P33IERPK	25/1200	CA, TN, PA

1. Savings based on comparison to F28T5 electronic instant start systems.  
 2. Tested to B50 L70 requirement. LED lifetime means the length of time (in hours) until half of the LED light sources maintain at least 70% of their initial lumen output (B50, L70).  
 \* When searching for DLC or NSF listings, please use the first 10-digits only.





(continued)

#### CorePro InstantFit T8 (Type A) LED tubes

Catalog Number	Model Number*	UPC Code	Product Description	Watts (W)	Base	CRI (min)	CCT (K)	Lifespan (hrs)	Lumens (lm)	Volts (V)	DLC ID	C/P Qty	Dist. Center
<b>CorePro InstantFit (Type A/C) - T8 4ft BAA</b>													
576777	929003144504	46677576776	10.5T8/COR/48-835/IF15/G/DIM/BAA 25/1	10.5	G13	82	3500	50000	1550	Ballast Dependent	PCWMMQO2	25/2100	-
576785	929003144604	46677576783	10.5T8/COR/48-840/IF16/G/DIM/BAA 25/1	10.5	G13	82	4000	50000	1650	Ballast Dependent	PT3KJJ88	25/2100	-
576793	929003144704	46677576790	10.5T8/COR/48-850/IF16/G/DIM/BAA 25/1	10.5	G13	82	5000	50000	1650	Ballast Dependent	P1BM45VN	25/2100	-
576801	929003144804	46677576806	14T8/COR/48-835/IF21/G/DIM/BAA 25/1	14	G13	82	3500	50000	2100	Ballast Dependent	PSKU31RZ	25/2100	-
576819	929003144904	46677576813	14T8/COR/48-840/IF22/G/DIM/BAA 25/1	14	G13	82	4000	50000	2200	Ballast Dependent	P78KFN3P	25/2100	-
576827	929003145004	46677576820	14T8/COR/48-850/IF22/G/DIM/BAA 25/1	14	G13	82	5000	50000	2200	Ballast Dependent	PY5R24DC	25/2100	-
<b>CorePro InstantFit (Type A/C) - T8 4ft</b>													
553214	929002252734	46677553210	10T8/COR/48-830/IF15/G/DIM 10/1	10	G13	82	3000	50000	1500	Ballast Dependent	PQF8SUD6	10/600	TN
553222	929002252834	46677553227	10T8/COR/48-835/IF15/G/DIM 10/1	10	G13	82	3500	50000	1500	Ballast Dependent	PVEGD8IP	10/600	CA, TN, PA
553230	929001991734	46677553234	10T8/COR/48-840/IF16/G/DIM 10/1	10	G13	82	4000	50000	1600	Ballast Dependent	PMMN006E	10/600	CA, TN, PA
553248	929001991834	46677553241	10T8/COR/48-850/IF16/G/DIM 10/1	10	G13	82	5000	50000	1600	Ballast Dependent	P6YC6AM6	10/600	CA, TN, PA
580266	929003556504	46677580261	11.5T8/COR/48-835/IF20/G/DIM 25/1	11.5	G13	>80	3500	50000	2000	Ballast Dependent	S-B7LKH5	25/900	CA, TN, PA
580274	929003556604	46677580278	11.5T8/COR/48-840/IF21/G/DIM 25/1	11.5	G13	>80	4000	50000	2100	Ballast Dependent	S-C4HNIU	25/900	CA, TN, PA
470096	929001343034	46677452407	14T8/COR/48-830/IF20/G/DIM 10/1	14	G13	82	3000	50000	2000	Ballast Dependent	PUHWMP7I	10/650	TN
470104	929001343134	46677452759	14T8/COR/48-835/IF20/G/DIM 10/1	14	G13	82	3500	50000	2000	Ballast Dependent	PD9P382I	10/650	CA, TN, PA
470112	929001343234	46677453251	14T8/COR/48-840/IF21/G/DIM 10/1	14	G13	82	4000	50000	2100	Ballast Dependent	PK33B4AL	10/650	CA, TN, PA
470120	929001343334	46677452483	14T8/COR/48-850/IF21/G/DIM 10/1	14	G13	82	5000	50000	2100	Ballast Dependent	PEQWC6CZ	10/650	CA, TN, PA
542084	929001960604	46677542085	16T8/LED/48-840/IF18/G 25/1	16	G13	82	4000	36000	1800	Ballast Dependent	Not DLC	25/900	CA, TN, PA
542092	929001960704	46677542092	16T8/LED/48-850/IF18/G 25/1	16	G13	82	5000	36000	1800	Ballast Dependent	Not DLC	25/900	CA, TN, PA
<b>CorePro InstantFit (Type A) - T8 8ft</b>													
580282	929003556704	46677580285	28T8/COR/96-835/IF40/G/FA8 10/1	28	FA8	>80	3500	50000	4000	Ballast Dependent	Not DLC	10/660	CA, TN, PA
580290	929003556804	46677580292	28T8/COR/96-840/IF42/G/FA8 10/1	28	FA8	>80	4000	50000	4200	Ballast Dependent	Not DLC	10/660	CA, TN, PA
533000	929001897104	46677533007	30T8/PRO/96-830/IF39/G/FA8 10/1	30	FA8	80	3000	50000	4200	Ballast Dependent	Not DLC	10/400	TN
533018	929001897204	46677533014	30T8/PRO/96-835/IF39/G/FA8 10/1	30	FA8	80	3500	50000	4200	Ballast Dependent	Not DLC	10/400	TN
533026	929001897304	46677533021	30T8/PRO/96-840/IF42/G/FA8 10/1	30	FA8	80	4000	50000	4200	Ballast Dependent	Not DLC	10/400	CA, TN, PA
533034	929001897404	46677533038	30T8/PRO/96-850/IF42/G/FA8 10/1	30	FA8	80	5000	50000	4200	Ballast Dependent	Not DLC	10/400	CA, TN, PA

1. Savings based on comparison to F28T5 electronic instant start systems.  
 2. Tested to B50 L70 requirement. LED lifetime means the length of time (in hours) until half of the LED light sources maintain at least 70% of their initial lumen output (B50, L70).  
 \* When searching for DLC or NSF listings, please use the first 10-digits only.

## LED Tubes

### CorePro DC-Fit T8 (Type C)



Selectable lumen system with Type C DC-Fit lamps

## Why choose CorePro CorePro DC-Fit T8 LED Tubes?

- Flexibility – one lamp will provide 2 lumen output (depending on the driver used) to simplify options for the customer
- Rebate eligible – the products are DLC5.1 listed allowing for maximum rebate opportunities
- Long lifetime – average life rating for T8 lamp is 70,000 hours; T5 lamp life is 50,000 hours
- Dimmability – lamps are operated with LED dimming drivers to enable more energy savings for the customer



## CorePro DC-Fit T8 (Type C) LED tubes

Catalog Number	Model Number*	UPC Code	Product Description	Watts (W)	Base	CRI (min)	CCT (K)	Lifespan (hrs)	Lumens (lm)	Volts (V)	DLC ID	C/P Qty	Dist. Center
CorePro InstantFit (Type A) – T5 2ft													
583962	929003651504	46677583965	14T5/COR/46-840/DF21/G/DIM UL-C 25/1	14 / 25	G5	80	4000	50000	2100 / 3500	Driver Dependent	S-Q310UL	25/1225	PA
583970	929003651604	46677583972	14T5/COR/46-850/DF21/G/DIM UL-C 25/1	14 / 25	G5	80	5000	50000	2100 / 3500	Driver Dependent	S-1JM607	25/1225	PA
583988	929003651704	46677583989	10T8/COR/48-840/DF16/G/DIM UL-C 25/1	10 / 14	G13	80	4000	70000	1600 / 2100	Driver Dependent	S-LGXK3C	25/1050	PA
583996	929003651804	46677583996	10T8/COR/48-850/DF16/G/DIM UL-C 25/1	10 / 14	G13	80	5000	70000	1600 / 2100	Driver Dependent	S-XH1EPD	25/1050	PA

1. Savings based on comparison to F28T5 electronic instant start systems.  
 2. Tested to B50 L70 requirement. LED lifetime means the length of time (in hours) until half of the LED light sources maintain at least 70% of their initial lumen output (B50, L70).  
 \* When searching for DLC or NSF listings, please use the first 10-digits only.





## LED Tubes

### MasterConnect InstantFit T8 (Type A)



Unique wireless control and connectivity



### Why choose MasterConnect InstantFit T8 LED Tubes?

- Available as UL Type-A (ballast compatible) and UL Type-B (ballast bypass)
- Energy savings of 55% compared with fluorescent lamps and up to 85% when configured with an interact system
- Truly easy install with wireless retrofits with no additional wiring needed
- Extra-long lifetime of 70,000 hrs
- Perfect for office, school, retail, and healthcare applications
- Flicker-free operation

### CorePro UniversalFit T8 LED glass tubes

Catalog Number	Model Number*	UPC Code	Product Description	Watts (W)	Base	CRI (min)	CCT (K)	Lifespan (hrs)	Lumens (lm)	Volts (V)	DLC ID	C/P Qty	Dist. Center
CorePro UniversalFit (Type A) - T8 4ft													
547299	929002051804	46677547295	14T8/48-835/IF20/MC IA 10/1	14	G13	80	3500	70000	2000	Driver Dependent	P63GG2HV	10/1120	PA
547307	929002051904	46677547301	14T8/48-840/IF21/MC IA 10/1	14	G13	80	4000	70000	2100	Driver Dependent	PYHJU4IT	10/1120	PA
547315	929002052004	46677547318	14T8/48-850/IF21/MC IA 10/1	14	G13	80	5000	70000	2100	Driver Dependent	PWENVHM8	10/1120	PA
562736	929002456604	46677562731	14.5T8/48-835/MF20/MC IA 10/1	14.5	G13	80	3500	70000	2000	120-277	PGLYX8QV	10/1120	PA
562744	929002456704	46677562748	14.5T8/48-840/MF21/MC IA 10/1	14.5	G13	80	4000	70000	2100	120-277	PNAN8SNC	10/1120	PA
562751	929002456804	46677562755	14.5T8/48-850/MF21/MC IA 10/1	14.5	G13	80	5000	70000	2100	120-277	PJM308EI	10/1120	PA

1. Savings based on comparison to F32T8 electronic instant start systems.
  2. Tested to B50 L70 requirement. LED lifetime means the length of time (in hours) until half of the LED light sources maintain at least 70% of their initial lumen output (B50, L70).
- \* When searching for DLC or NSF listings, please use the first 10-digits only.



# PHILIPS

## LED Tubes

### CorePro FlexFit T8 (Type A+B)



Hybrid lamp that works in **Type A** or **Type B** application

## Why choose CorePro FlexFit T8 LED Tubes?

- One lamp for two applications, works as either a plug-and-play (UL Type A) or ballast bypass (UL Type B) lamp
- Provide the flexibility to fit your lighting application needs. As a Type A lamp it is compatible with a variety of ballasts, however, if a ballast is not desired the lamp can quickly be installed as a double-ended ballast bypass lamp
- 50,000 hr<sup>1</sup> rated life and standard 5-year limited warranty<sup>2</sup>
- Glass tube construction with >320° illumination angle



## CorePro FlexFit T8 (Type A+B) LED tubes

Catalog Number	Model Number*	UPC Code	Product Description	Watts (W)	Base	CRI (min)	CCT (K)	Lifespan (hrs)	Lumens (lm)	Volts (V)	DLC ID	C/P Qty	Dist. Center
CorePro FlexFit (Type A+B) - T8 4ft													
560193	929002402204	46677560195	12.5T8/COR/48-835/FF18/G 25/1	12.5	G13	80	3500	50000	1800	120-277	PNPPUDXB	25/400	TN
600189	929002317304	46677600181	12.5T8/COR/48-840/FF18/G 25/1	12.5	G13	80	4000	50000	1800	120-277	PD745LMC	25/400	CA, TN, PA
600197	929002317404	46677600198	12.5T8/COR/48-850/FF18/G 25/1	12.5	G13	80	5000	50000	1800	120-277	PMAB652F	25/400	CA, TN, PA

1. Tested to B50 L70 requirement. LED lifetime means the length of time (in hours) until half of the LED light sources maintain at least 70% of their initial lumen output (B50, L70).

2. See [www.signify.com/warranties](http://www.signify.com/warranties) for details.

\* When searching for DLC or NSF listings, please use the first 10-digits only.





**Simple plug-and-play installation** with no need to change a ballast



### Why choose UniversalFit T8 LED Tubes?

- UL Type A T8 lamps works on both T12 magnetic and T8 and T12 electronic ballasts
- Energy savings of up to 50%<sup>1</sup>
- Average life rating of 36,000 hours<sup>2</sup>
- Minimal color shift and stable flux output throughout lifetime
- No mercury allowing for non-hazardous waste disposal
- No harmful UV radiation
- Glass tube construction

### CorePro UniversalFit T8 LED glass tubes

Catalog Number	Model Number*	UPC Code	Product Description	Watts (W)	Base	CRI (min)	CCT (K)	Lifespan (hrs)	Lumens (lm)	Volts (V)	DLC ID	C/P Qty	Dist. Center
CorePro UniversalFit (Type A) - T8 4ft													
539972	929001965904	46677539979	16T8/LED/48-840/UF18/G 10/1	16	G13	82	4000	36000	1800	Ballast Dependent	Not DLC	10/650	PA , TN
539980	929001966004	46677539986	16T8/LED/48-850/UF18/G 10/1	16	G13	82	5000	36000	1800	Ballast Dependent	Not DLC	10/650	TN

1. Savings based on comparison to F32T8 electronic instant start systems.  
 2. Tested to B50 L70 requirement. LED lifetime means the length of time (in hours) until half of the LED light sources maintain at least 70% of their initial lumen output (B50, L70).  
 \* When searching for DLC or NSF listings, please use the first 10-digits only.

# PHILIPS

## LED Tubes

### CorePro PLED

Instant-on and simple lamp-for-lamp replacement solutions



## Why choose CorePro PLED Lamps?

- Most lamps are shatter-resistant and prevent breakage
- Energy savings of up to 60%<sup>1</sup>
- Average life rating of 50,000 hours<sup>2</sup>
- Minimal color shift and stable flux output throughout lifetime
- No mercury allowing for non-hazardous waste disposal
- No harmful UV radiation



## CorePro PLED lamps

Cat. No.	Model No.*	UPC Code	Product Description	Watts (W)	Base	CRI (min)	CCT (K)	Lifespan (hrs)	Lumens (lm)	Volts (V)	Body	DLC ID	C/P Qty	Dist. Center
<b>CorePro 2-pin PL-S (Type A) ballast compatible</b>														
529511	929001862804	46677529512	5PL-S/LED/13H/827/IF5/P/2P 20/1	5	GX23	82	2700	50000	580	120-277	Glass	No Category	20/7920	TN
529560	929001862904	46677529567	5PL-S/LED/13H/830/IF5/P/2P 20/1	5	GX23	82	3000	50000	580	120-277	Glass	No Category	20/7920	TN
529578	929001863004	46677529574	5PL-S/LED/13H/835/IF5/P/2P 20/1	5	GX23	82	3500	50000	580	120-277	Glass	No Category	20/7920	CA, TN, PA
529586	929001863104	46677529581	5PL-S/LED/13H/840/IF5/P/2P 20/1	5	GX23	82	4000	50000	580	120-277	Glass	No Category	20/7920	CA, TN, PA
<b>CorePro 4-pin PL-L (Type A) ballast compatible</b>														
532895	929001893504	46677532895	16.5PL-L/COR/22/830/IF22/P 4P 10/1	16.5	2G11	82	3000	50000	2200	100-277, 347	Plastic	P31FZ6G6	10/1200	PA
532903	929001893604	46677532901	16.5PL-L/COR/22/835/IF22/P 4P 10/1	16.5	2G11	82	3500	50000	2200	100-277, 347	Plastic	PAVW5BH3	10/1200	PA
532911	929001893704	46677532918	16.5PL-L/COR/22/840/IF23/P 4P 10/1	16.5	2G11	82	4000	50000	2300	100-277, 347	Plastic	PIWSEV1M	10/1200	PA
<b>CorePro 4-pin PL-L (Type B) ballast bypass</b>														
575100	929003097504	46677575106	17PL-L/COR/22-830/MF22/G/4P 10/1	17	2G11	82	3000	50000	2200	120-277	Glass	PMRRH3FX	10/1440	CA, TN, PA
575118	929003097604	46677575113	17PL-L/COR/22-835/MF22/G/4P 10/1	17	2G11	82	3500	50000	2200	120-277	Glass	PDOC47TH	10/1440	CA, TN, PA
575126	929003097704	46677575120	17PL-L/COR/22-840/MF22/G/4P 10/1	17	2G11	82	4000	50000	2200	120-277	Glass	PE7ZEGUJ	10/1440	CA, TN, PA

1. Savings based on comparison to F32T8 electronic instant start systems.  
 2. Tested to B50 L70 requirement. LED lifetime means the length of time (in hours) until half of the LED light sources maintain at least 70% of their initial lumen output (B50, L70).  
 \* When searching for DLC or NSF listings, please use the first 10-digits only.



(continued)

#### CorePro PLED lamps

Cat. No.	Model No.*	UPC Code	Product Description	Watts (W)	Base	CRI (min)	CCT (K)	Lifespan (hrs)	Lumens (lm)	Volts (V)	Body	DLC ID	C/P Qty	Dist. Center
<b>CorePro 2-pin PL-C (Type A) ballast compatible</b>														
532333	929001884704	46677532338	5PL-C/LED/13H/835/IF5.5/P/2P 20/1	5	G24d	82	3500	50000	580	120-277	Plastic	No Category	20/4760	TN
532374	929001885104	46677532376	5PL-C/LED/13W/835/IF5.5/P/2P 20/1	5	G24d	82	3500	50000	580	120-277	Plastic	No Category	20/3600	TN
532341	929001884804	46677532345	5PL-C/LED/13H/840/IF5.5/P/2P 20/1	5	G24d	82	4000	50000	580	120-277	Plastic	No Category	20/4760	TN
532382	929001885204	46677532383	5PL-C/LED/13W/840/IF5.5/P/2P 20/1	5	G24d	82	4000	50000	580	120-277	Plastic	No Category	20/3600	TN
<b>CorePro 4-pin PL-C (Type A) ballast compatible</b>														
532432	929001885704	46677532437	5.5PL-C/LED/13W/827/IF5.5/P/4P 20/1	5.5	G24q	82	2700	50000	550	14-60	Plastic	No Category	20/3600	TN
532408	929001885404	46677532406	5.5PL-C/LED/13H/830/IF5.5/P/4P 20/1	5.5	G24q	82	3000	50000	550	14-60	Plastic	No Category	20/4760	TN
532416	929001885504	46677532413	5.5PL-C/LED/13H/835/IF5.5/P/4P 20/1	5.5	G24q	82	3500	50000	580	14-60	Plastic	No Category	20/4760	TN
532457	929001885904	46677532451	5.5PL-C/LED/13W/835/IF5.5/P/4P 20/1	5.5	G24q	82	3500	50000	580	14-60	Plastic	No Category	20/3600	TN
532424	929001885604	46677532420	5.5PL-C/LED/13H/840/IF5.5/P/4P 20/1	5.5	G24q	82	4000	50000	580	14-60	Plastic	No Category	20/4760	PA
532465	929001886004	46677532468	5.5PL-C/LED/13W/840/IF5.5/P/4P 20/1	5.5	G24q	82	4000	50000	580	14-60	Plastic	No Category	20/3600	TN
<b>CorePro 4-pin PL-C/T (Type A) ballast compatible</b>														
458364	929001388004	46677458362	8.5PL-C/T LED/26H-2700 IF 4P 10/1	8.5	GX24Q	80	2700	50000	900	120	Plastic	P227UKPG	10/4140	TN
458372	929001388104	46677458379	8.5PL-C/T LED/26H-3000 IF 4P 10/1	8.5	GX24Q	80	3000	50000	900	120	Plastic	PYHS75V7	10/4140	CA, TN, PA
458380	929001388204	46677458386	8.5PL-C/T LED/26H-3500 IF 4P 10/1	8.5	GX24Q	80	3500	50000	900	120	Plastic	P1956NU5	10/4140	CA, TN, PA
458398	929001388304	46677458393	8.5PL-C/T LED/26H-4000 IF 4P 10/1	8.5	GX24Q	80	4000	50000	950	120	Plastic	PUK7J4AA	10/4140	CA, TN, PA
458406	929001388404	46677458409	10.5PL-C/T LED/26V-2700 IF 4P 10/1	10.5	GX24Q	>80	2700	50000	1200	100-277, 347	Plastic	PW2GPMX6	10/2960	TN
458414	929001388504	46677458416	10.5PL-C/T LED/26V-3000 IF 4P 10/1	10.5	GX24Q	>80	3000	50000	1200	100-277, 347	Plastic	PGPTBMF9	10/2960	CA, TN, PA
458422	929001388604	46677458423	10.5PL-C/T LED/26V-3500 IF 4P 10/1	10.5	GX24Q	>80	3500	50000	1200	100-277, 347	Plastic	PZIKRNR	10/2960	CA, TN, PA
458430	929001388704	46677458430	10.5PL-C/T LED/26V-4000 IF 4P 10/1	10.5	GX24Q	>80	4000	50000	1300	100-277, 347	Plastic	PV2HQGZW	10/2960	CA, TN, PA
476069	929001819704	46677476069	12PLC/T LED/32H/827/IF/4P/DIM 1PK 10/1	12	G24/Gx24	>80	2700	50000	1300	100-277, 347	Plastic	PIADVYIP	10/4140	TN
476101	929001820104	46677476106	12PLC/T LED/32H/827/IF/4P/DIM 1PK 10/1	12	G24/Gx24	>80	2700	50000	1350	100-277, 347	Plastic	PUS3MZTV	10/4140	TN
476077	929001819804	46677476076	12PLC/T LED/32H/830/IF/4P/DIM 1PK 10/1	12	G24/Gx24	>80	3000	50000	1350	100-277, 347	Plastic	PO8NB9Q1	10/4140	TN
476119	929001820204	46677476113	12PLC/T LED/32H/830/IF/4P/DIM 1PK 10/1	12	G24/Gx24	>80	3000	50000	1400	100-277, 347	Plastic	PEIZQ8AS	10/4140	TN
476127	929001820304	46677476120	12PLC/T LED/32H/835/IF/4P/DIM 1PK 10/1	12	G24/Gx24	>80	3500	50000	1450	100-277, 347	Plastic	PJG8ADHK	10/4140	PA, TN
476085	929001819904	46677476083	12PLC/T LED/32H/835/IF/4P/DIM 1PK 10/1	12	G24/Gx24	>80	3500	50000	1400	100-277, 347	Plastic	PZHF15JO	10/4140	CA, TN, PA
476093	929001820004	46677476090	12PLC/T LED/32H/840/IF/4P/DIM 1PK 10/1	12	G24/Gx24	>80	4000	50000	1450	100-277, 347	Plastic	PT5IC4ON	10/4140	CA, TN, PA
476135	929001820404	46677476137	12PLC/T LED/32H/840/IF/4P/DIM 1PK 10/1	12	G24/Gx24	>80	4000	50000	1500	100-277, 347	Plastic	PFKH6AQA	10/4140	CA, TN, PA
<b>CorePro 4-pin PL-C/T Color Adjustable (Type B) ballast bypass</b>														
577890	929003477604	46677577896	8PL-C/T/COR/26H-3CCT/MF10/P/20/1	8	G24d-3/G24q-3/ GX24q-3	>80	3000/3500/ 4000	30000	975, 1000 & 1050	100-277	Plastic	Not DLC	20/4900	CA, TN, PA
577908	929003477704	46677577902	8PL-C/T/COR/26V-3CCT/MF10/P/20/1	8		>80	3000/3500/ 4000	30000		100-277	Plastic	Not DLC	20/3600	CA, TN, PA
577916	929003477804	46677577919	11PL-C/T/COR/32H-3CCT/MF15/P/20/1	11	G24d-3/G24q-3/ GX24q-3	>80	3000/3500/ 4000	30000	1425, 1450 & 1500	100-277	Plastic	Not DLC	20/4900	CA, TN, PA
577924	929003477904	46677577926	11PL-C/T/COR/32V-3CCT/MF15/P/20/1	11		>80	3000/3500/ 4000	30000		100-277	Plastic	Not DLC	20/3600	CA, TN, PA

1. Savings based on comparison to F32T8 electronic instant start systems.  
 2. Tested to B50 L70 requirement. LED lifetime means the length of time (in hours) until half of the LED light sources maintain at least 70% of their initial lumen output (B50, L70).  
 \* When searching for DLC or NSF listings, please use the first 10-digits only.

# PHILIPS

## LED HID Replacements

### MasterClass Corn Cob

Long life lowers maintenance costs by reducing relamp frequency



80W EX39

115W EX39

150W EX39

450W EX39

## Why choose MasterClass Corn Cob LED Lamps?

- Delivers up to 1000W replacements
- Fits within industry ANSI outline offering perfect fit in all HID fixtures
- UL Type B allows installer to bypass the ballast and reduce maintenance costs
- Both 120V-277V & 277V-480V available
- Includes additional safety cable for secure installation
- Suitable for both enclosed and open fixtures
- DLC 5.1 certified



## MasterClass Corn Cob LED lamps

Cat. No.	Model Number*	UPC Code	Product Description	Replace (W)	Watts (W)	Base	CRI (min)	CCT (K)	Life (hrs)	Lumens (lm)	Volts (V)	UL Type	DLC ID	C/P Qty	Dist. Center
MasterClass LED corn cob															
564054	929002996104	46677564056	80CC/LED/840/LS EX39 G2 BB 3/1	250	80	EX39	80	4000	50000	12000	120-277	B	PN82L2A9	3/360	CA, TN, PA
564062	929002996204	46677564063	80CC/LED/850/LS EX39 G2 BB 3/1	250	80	EX39	80	5000	50000	12000	120-277	B	PULAM3IM	3/360	CA, TN, PA
564070	929002996404	46677564070	115CC/LED/840/LS EX39 G2 BB 3/1	320	115	EX39	80	4000	50000	18000	120-277	B	P1U2CWND	3/312	CA, TN, PA
564088	929002996504	46677564087	115CC/LED/850/LS EX39 G2 BB 3/1	320	115	EX39	80	5000	50000	18000	120-277	B	PM4XX5Z8	3/312	CA, TN, PA
579003	929003507004	46677579005	115CC/LED/840/LS EX39 G2 BB 277-480V 3/1	320	115	EX39	80	4000	50000	18000	277-480	B	S-64AZUM/S-N52WDF	3/312	CA, TN, PA
579011	929003507104	46677579012	115CC/LED/850/LS EX39 G2 BB 277-480V 3/1	320	115	EX39	80	5000	50000	18000	277-480	B	S-C7Q6VR/S-4ID105	3/312	CA, TN, PA
564096	929002996704	46677564094	150CC/LED/840/LS EX39 G2 BB 3/1	400	150	EX39	80	4000	50000	24000	120-277	B	PFS6E2T5/P5JITDVK	3/312	CA, TN, PA
564112	929002996804	46677564117	150CC/LED/850/LS EX39 G2 BB 3/1	400	150	EX39	80	5000	50000	24000	120-277	B	PYMYMJLJ	3/312	CA, TN, PA
579029	929003507204	46677579029	150CC/LED/840/LS EX39 G2 BB 277-480V 3/1	400	150	EX39	80	4000	50000	23500	277-480	B	S-PME5N3/S-YQNS6C	3/312	CA, TN, PA
579037	929003507304	46677579036	150CC/LED/850/LS EX39 G2 BB 277-480V 3/1	400	150	EX39	80	5000	50000	23500	277-480	B	S-UFWER4/S-L4PWHN	3/312	CA, TN, PA
564732	929003019704	46677564735	450CC/LED/840/LS EX39 BB 3/1	1000	450	EX39	80	4000	50000	65000	277-480	B	P2PMKGIN	3/60	CA, TN, PA
564740	929003019804	46677564742	450CC/LED/850/LS EX39 BB 3/1	1000	450	EX39	80	5000	50000	65000	277-480	B	POM965V4	3/60	CA, TN, PA

\* When searching for DLC or NSF listings, please use the first 10-digits only.

## LED HID Replacements

### MasterClass Corn Cob with Selectable CCT



36W EX39

45/54W EX39

63W EX39

80W EX39

115/145W EX39

UL Type B lamps for a range of industrial, commercial and urban applications



### Why choose MasterClass Corn Cob LED Lamps?

- Reduce & streamline inventory with three color temperatures in one lamp
- Select lamps are passive cooling which eliminate fan noise by reducing moving parts that require additional maintenance over time
- Up to 80% energy savings<sup>1</sup>
- Long life lowers maintenance costs by reducing re-lamp frequency
- UL Type B solution allows installer to bypass the ballast and reduce maintenance costs
- DLC 5.1 Certified

### MasterClass Corn Cob LED lamps with Selectable CCT

Cat. No.	Model Number*	UPC Code	Product Description	Replace (W)	Watts (W)	Base	CRI (min)	CCT (K)	Life (hrs)	Lumens (lm)	Volts (V)	UL-Type	DLC ID	C/P Qty	Dist. Center
<b>MasterClass LED corn cob with Selectable CCT</b>															
570465	929003065204	46677570460	36CC/LED/3CCT/LS EX39 G3 BB 3/1	100	36	EX39	80	3000/4000/5000	50000	4800/5000/5000	100-277	B	PLKHJQIQ2U	3/408	CA, TN, PA
570473	929003065304	46677570477	45CC/LED/3CCT/LS EX39 G3 BB 3/1	150	45	EX39	80	3000/4000/5000	50000	5800/6200/6200	100-277	B	PLBJN6CXJY4T	3/306	PA
570481	929003065404	46677570484	54CC/LED/3CCT/LS EX39 G3 BB 3/1	150	54	EX39	80	3000/4000/5000	50000	7000/7500/7500	100-277	B	PLQBU4L9A885	3/306	CA, TN, PA
570499	929003065504	46677570491	63CC/LED/3CCT/LS EX39 G3 BB 3/1	175	63	EX39	80	3000/4000/5000	50000	7800/8500/8500	100-277	B	PLI2F538JT5L	3/306	PA
<b>MasterClass LED corn cob with Selectable CCT – Releasing in September 2023 (active cooling models – not passively cooled)</b>															
583682	929003631404	46677583682	80CC/LED/3CCT/LS EX39 BB 3/1	250	80	EX39	80	3000/4000/5000	50000	12000	100-277	B	S-0371VQ	3/360	CA, TN, PA
583690	929003631504	46677583699	115CC/LED/3CCT/LS EX39 BB 3/1	320	115	EX39	80	3000/4000/5000	50000	17000	100-277	B	S-S5QY09	3/312	CA, TN, PA
583708	929003631604	46677583705	145CC/LED/3CCT/LS EX39 BB 3/1	400	145	EX39	80	3000/4000/5000	50000	22000	100-277	B	S-3SPL5J	3/312	CA, TN, PA

1. LED system watts of 36W compared to 120W of a C100S54/ALTO.

\* When searching for DLC or NSF listings, please use the first 10-digits only.

Offered in both mogul-based and medium-based options



## Why choose CorePro Corn Cob LED Lamps?

- Passive cooling lamps eliminate fan noise and reduce moving parts which require additional maintenance over time
- Up to 70% energy savings<sup>1</sup>
- Long life lowers maintenance costs by reducing re-lamp frequency
- UL Type B solution allows installer to bypass the ballast and reduce maintenance costs
- Suitable for use in enclosed fixtures
- DLC 5.1 certified



## CorePro Corn Cob LED lamps

Catalog Number	Model Number*	UPC Code	Product Description	Watts (W)	Base	CRI (min)	CCT (K)	Lifespan (hrs)	Lumens (lm)	Volts (V)	UL-Type	DLC ID	C/P Qty	Dist. Center
<b>CorePro LED corn cob (E26 base)</b>														
559633	929002395204	46677559632	18CC/LED/830/ND E26 G2 BB 6/1	18	E26	80	3000	50000	2300	100-277	B	No Category	6/900	CA, TN, PA
559641	929002395304	46677559649	18CC/LED/840/ND E26 G2 BB 6/1	18	E26	80	4000	50000	2400	100-277	B	No Category	6/900	CA, TN, PA
559658	929002395404	46677559656	18CC/LED/850/ND E26 G2 BB 6/1	18	E26	80	5000	50000	2500	100-277	B	No Category	6/900	CA, TN, PA
559666	929002395504	46677559663	27CC/LED/830/ND E26 G2 BB 6/1	27	E26	80	3000	50000	3500	100-277	B	No Category	6/720	CA, TN, PA
559674	929002395604	46677559670	27CC/LED/840/ND E26 G2 BB 6/1	27	E26	80	4000	50000	3700	100-277	B	No Category	6/720	CA, TN, PA
559682	929002395704	46677559687	27CC/LED/850/ND E26 G2 BB 6/1	27	E26	80	5000	50000	3800	100-277	B	No Category	6/720	CA, TN, PA
559690	929002395804	46677559694	36CC/LED/830/ND E26 G2 BB 6/1	36	E26	80	3000	50000	5000	100-277	B	No Category	6/456	CA, TN, PA
559708	929002395904	46677559700	36CC/LED/840/ND E26 G2 BB 6/1	36	E26	80	4000	50000	5200	100-277	B	No Category	6/456	CA, TN, PA
559716	929002396004	46677559717	36CC/LED/850/ND E26 G2 BB 6/1	36	E26	80	5000	50000	5400	100-277	B	No Category	6/456	CA, TN, PA
<b>CorePro LED corn cob (EX39 base)</b>														
564120	929002998904	46677564124	36CC/LED/830/LS EX39 G3 BB 3/1	36	EX39	80	3000	50000	5000	100-277	B	PLM1K5CYBG70	3/408	PA
564153	929002999004	46677564155	36CC/LED/840/LS EX39 G3 BB 3/1	36	EX39	80	4000	50000	5200	100-277	B	PLPB78A46RFU	3/408	PA
564161	929002999104	46677564162	36CC/LED/850/LS EX39 G3 BB 3/1	36	EX39	80	5000	50000	5400	100-277	B	PLRN7FDI00ED	3/408	PA
564179	929002999204	46677564179	45CC/LED/830/LS EX39 G3 BB 3/1	45	EX39	80	3000	50000	6200	100-277	B	PLTD4XA0V3QH	3/306	PA
564187	929002999304	46677564186	45CC/LED/840/LS EX39 G3 BB 3/1	45	EX39	80	4000	50000	6500	100-277	B	PL3P4HE3UL14	3/306	PA
564195	929002999404	46677564193	45CC/LED/850/LS EX39 G3 BB 3/1	45	EX39	80	5000	50000	6700	100-277	B	PLHDLSDW2HSG	3/306	PA
564203	929002999504	46677564209	54CC/LED/830/LS EX39 G3 BB 3/1	54	EX39	80	3000	50000	7500	100-277	B	PLBYTGTV2NOP	3/306	PA
564211	929002999604	46677564216	54CC/LED/840/LS EX39 G3 BB 3/1	54	EX39	80	4000	50000	7800	100-277	B	PLPTCF95VDU7	3/306	PA
564229	929002999704	46677564223	54CC/LED/850/LS EX39 G3 BB 3/1	54	EX39	80	5000	50000	8000	100-277	B	PLUBY004T3S2	3/306	PA
564237	929002999804	46677564230	63CC/LED/830/LS EX39 G3 BB 3/1	63	EX39	80	3000	50000	8600	100-277	B	PLI2LOVUXLDT	3/306	PA
564245	929002999904	46677564247	63CC/LED/840/LS EX39 G3 BB 3/1	63	EX39	80	4000	50000	9000	100-277	B	PLD6QBHYH4ZR	3/306	PA
564252	929003000004	46677564254	63CC/LED/850/LS EX39 G3 BB 3/1	63	EX39	80	5000	50000	9200	100-277	B	PL6A9CH8G67L	3/306	PA

1. LED system watts of 36W compared to 120W of a C100S54/ALTO.

\* When searching for DLC or NSF listings, please use the first 10-digits only.





# PHILIPS

## LED HID Replacements

### CorePro Glass lamps



UL Type B ballast bypass lamps for a range of indoor and outdoor applications

### Why choose CorePro Glass LED Lamps?

- Low initial investment with short payback
- Frosted Glass Housing for same look and feel as conventional HID
- Patented High Power LED filament design for superior light quality and uniformity
- Suitable for indoor / outdoor applications
- Suitable for Enclosed and open fixtures



### CorePro Glass LED lamps

Catalog Number	Model Number*	UPC Code	Product Description	Watts (W)	Base	CRI (min)	CCT (K)	Lifespan (hrs)	Lumens (lm)	Volts (V)	UL-Type	DLC ID	Case/Pallet Qty	Distribution Center
CorePro LED Glass lamps														
578815	929003507404	46677578817	14GC/LED/830/ND E26 BB 6/1	14	E26	80	3000	25000	2000	120-277	B	No Category	6/480	--
578823	929003507504	46677578824	14GC/LED/840/ND E26 BB 6/1	14	E26	80	4000	25000	2000	120-277	B	No Category	6/480	--
578831	929003507604	46677578831	14GC/LED/850/ND E26 BB 6/1	14	E26	80	5000	25000	2000	120-277	B	No Category	6/480	--
578849	929003507704	46677578848	19GC/LED/830/ND E26 BB 6/1	19	E26	80	3000	25000	3000	120-277	B	No Category	6/480	--
578856	929003507804	46677578855	19GC/LED/840/ND E26 BB 6/1	19	E26	80	4000	25000	3000	120-277	B	No Category	6/480	--
578864	929003507904	46677578862	19GC/LED/850/ND E26 BB 6/1	19	E26	80	5000	25000	3000	120-277	B	No Category	6/480	--
578872	929003508004	46677578879	28GC/LED/830/ND E26 BB 6/1	28	E26	80	3000	25000	4000	120-277	B	No Category	6/480	--
578880	929003508104	46677578886	28GC/LED/840/ND E26 BB 6/1	28	E26	80	4000	25000	4000	120-277	B	No Category	6/480	--
578898	929003508204	46677578893	28GC/LED/850/ND E26 BB 6/1	28	E26	80	5000	25000	4000	120-277	B	No Category	6/480	--
577577	929003154804	46677577575	32GC/LED/830/ND E39 BB 6/1	32	E39	80	3000	25000	4600	120-277	B	Not DLC	6/240	PA
577593	929003150604	46677577599	32GC/LED/850/ND E39 BB 6/1	32	E39	80	5000	25000	5000	120-277	B	Not DLC	6/240	PA
578914	929003508304	46677578916	34GC/LED/830/ND EX39 BB 6/1	34	EX39	80	3000	25000	5000	120-277	B	Not DLC	6/240	--
578922	929003508404	46677578923	34GC/LED/840/ND EX39 BB 6/1	34	EX39	80	4000	25000	5000	120-277	B	Not DLC	6/240	--
578930	929003508504	46677578930	34GC/LED/850/ND EX39 BB 6/1	34	EX39	80	5000	25000	5000	120-277	B	Not DLC	6/240	--
577585	929003154904	46677577582	36GC/LED/830/ND E39 BB 6/1	36	E39	80	3000	25000	5200	120-277	B	Not DLC	6/240	PA
578948	929003508604	46677578947	38GC/LED/830/ND EX39 BB 6/1	38	EX39	80	3000	25000	6000	120-277	B	Not DLC	6/240	--
578954	929003508704	46677578954	38GC/LED/840/ND EX39 BB 6/1	38	EX39	80	4000	25000	6000	120-277	B	Not DLC	6/240	--
578962	929003508804	46677578961	38GC/LED/850/ND EX39 BB 6/1	38	EX39	80	5000	25000	6000	120-277	B	Not DLC	6/240	--

\* When searching for DLC or NSF listings, please use the first 10-digits only.



145/165W EX39

PIR sensor

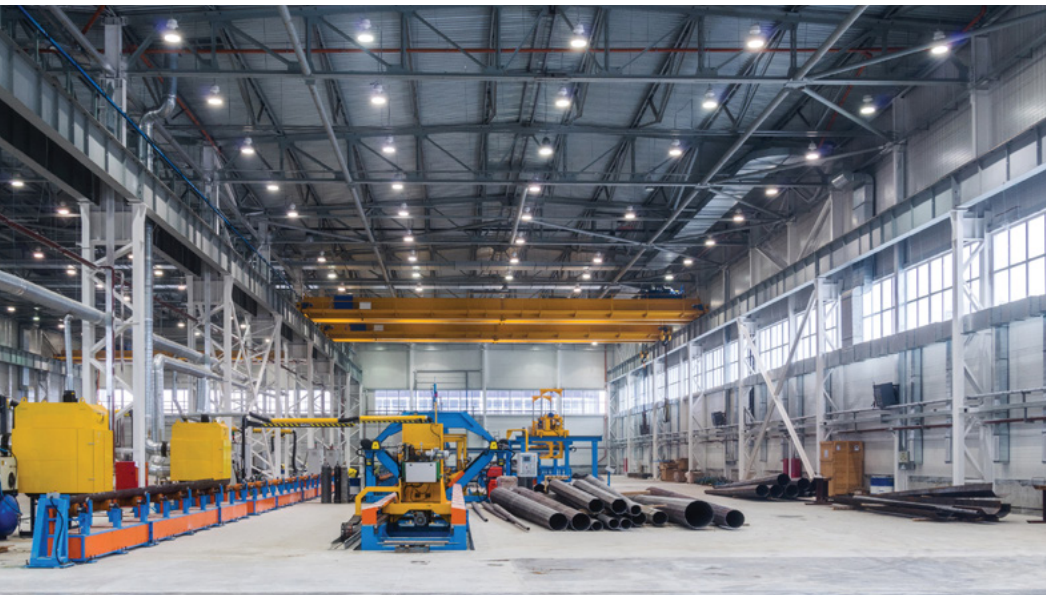


Bottom view



Side view

Instant-on for  
no warm-up time



## Why choose TrueForce High Bay LED Lamps?

- Easy to install and works on wide voltage (120-277V)
- Available in Ballast Bypass UL Type B as well as UL Type A options
- Wide operating temperature range for industrial applications: -40°F to 130°F (-40°C to 55°C)
- Narrow and wide beam options to ensure uniform light distribution in application
- UL Type B lamps are suitable for use in enclosed fixtures & DLC certified

## TrueForce High Bay LED lamps

Catalog Number	Model Number*	UPC Code	Product Description	Watts (W)	Base	CRI (min)	CCT (K)	Lifespan (hrs)	Lumens (lm)	Volts (V)	UL-Type	DLC ID	C/P Qty	Dist. Center
<b>TrueForce LED high bay</b>														
563932	929002496004	46677563936	145HB/LED/840/D NB DL BB G2 4/1	145	EX39	80	4000	50000	20000	120-277	B	P8WLG09H	4/48	CA, TN, PA
563940	929002496104	46677563943	145HB/LED/840/D WB UDL BB G2 4/1	145	EX39	80	4000	50000	20000	120-277	B	PSVZ6SE9	4/48	CA, TN, PA
563956	929002496204	46677563950	145HB/LED/850/D NB DL BB G2 4/1	145	EX39	80	5000	50000	20000	120-277	B	P55179KZ	4/48	CA, TN, PA
563964	929002496304	46677563967	145HB/LED/850/D WB UDL BB G2 4/1	145	EX39	80	5000	50000	20000	120-277	B	PBK8814S	4/48	CA, TN, PA
563972	929002496404	46677563974	165HB/LED/840/D NB DL BB G2 4/1	165	EX39	80	4000	50000	25000	120-277	B	PVD0QT7F	4/48	PA
563980	929002496504	46677563981	165HB/LED/840/D WB UDL BB G2 4/1	165	EX39	80	4000	50000	25000	120-277	B	P8IYLC2U	4/48	PA
563998	929002496604	46677563998	165HB/LED/850/D NB DL BB G2 4/1	165	EX39	80	5000	50000	25000	120-277	B	PIOLNZOS	4/48	PA
564005	929002496704	46677564001	165HB/LED/850/D WB UDL BB G2 4/1	165	EX39	80	5000	50000	25000	120-277	B	P68AJMDV	4/48	PA
<b>TrueForce LED high bay Accessory</b>														
564013	929002497104	-	LED highbay sensor accessory	N/A	N/A	N/A	N/A	N/A	N/A	N/A	N/A	-	4/3024	-

\* When searching for DLC or NSF listings, please use the first 10-digits only.

Optically efficient,  
emits light towards  
usage direction



35W E39

55W E39

Phasing out

### Why choose TrueForce Post Top LED Lamps?

- Energy savings up to 75% when compared to traditional HID lamps
- Reliable lifetime up to 50,000 hours<sup>1</sup>
- Right lamp size and lighting distribution for direct retrofit with a peace of mind
- Direct LED replacement solution without changing the fixture
- Pleasant white light with CRI 70



### TrueForce Post Top LED lamps

Catalog Number	Model Number*	UPC Code	Product Description	Watts (W)	Base	CRI (min)	CCT (K)	Lifespan (hrs)	Lumens (lm)	Volts (V)	UL-Type	DLC ID	Case/Pallet Qty	Distribution Center	
CorePro LED post top (Plastic/Metal)															
473603	929001396504	46677473600	35ED23.5/LED/730/ND 120-277V G2 4/1	35	E39	70	3000	50000	5000	120-277	B	Not DLC	4/600	TN	
473611	929001396604	46677473617	35ED23.5/LED/740/ND 120-277V G2 4/1	35	E39	70	4000	50000	5000	120-277	B	Not DLC	4/600	TN	
473652	929001397004	46677473655	55ED28/LED/727/ND 120-277V G2 4/1	55	E39	70	2700	50000	8000	120-277	B	Not DLC	4/400	TN	

1. Tested to B50 L70 requirement. LED lifetime means the length of time (in hours) until half of the LED light sources maintain at least 70% of their initial lumen output (B50, L70).

\* When searching for DLC or NSF listings, please use the first 10-digits only.



38W E26

45W E26

65/75W EX39

**UL Type B**  
ballast bypass lamps

#### Phasing out



### Why choose CorePro High Bay/Low Bay LED Lamps?

- Standard EX39 base to replace E and O rated metal halide lamps
- Over temp and 4KV surge protection
- Average life rating of 25,000 hours<sup>1</sup>
- No mercury allowing for non-hazardous waste disposal
- Title 20 qualified for California applications
- 5-year limited warranty depending on operating hours<sup>2</sup>

#### CorePro High Bay/Low Bay LED plastic lamps

Catalog Number	Model Number*	UPC Code	Product Description	Watts (W)	Base	CRI (min)	CCT (K)	Lifespan (hrs)	Lumens (lm)	Volts (V)	UL-Type	DLC ID	Case/Pallet Qty	Distribution Center	
CorePro LED high bay/low bay															
547943	929001993304	46677547943	4HB/LED/Blue/ND FB 6/1	4	E26	N/A	Blue	15000	N/A	120	B	Not DLC	6/828	TN	
542365	929001993204	46677542368	15HB/LED/840/ND FB 6/1	15	E26	80	4000	25000	1600	120	B	Not DLC	6/828	MTO	
541960	929001990104	46677541965	38HB/LED/850/ND BB 6/1	38	E26	80	5000	25000	3800	120	B	No Category	6/144	CA, TN, PA	
542324	929001993104	46677542320	75HB/LED/840/ND FB 4/1	75	EX39	80	4000	25000	8500	120	B	No Category	4/192	CA, TN, PA	
541978	929001990204	46677541972	45HB/LED/850/ND BB 6/1	45	E26	80	5000	25000	4800	120	B	No Category	6/108	TN	

1. Tested to B50 L70 requirement. LED lifetime means the length of time (in hours) until half of the LED light sources maintain at least 70% of their initial lumen output (B50, L70).

2. See [www.signify.com/warranties](http://www.signify.com/warranties) for details.

\* When searching for DLC or NSF listings, please use the first 10-digits only.

Note: product phasing out by Q3 2022.

## LED Spots

### MasterClass ExpertColor PAR



Easy to replace/retrofit in most current halogen fixtures

### Why choose MasterClass ExpertColor PAR LED Lamps?

- Consistent color and lumen maintenance over life of product
- Deep dimming below 5%
- Up to 90% energy savings compared to halogen lamps<sup>2</sup>
- Average life rating of up to 40,000 hrs<sup>1</sup>
- Up to 5-year limited warranty<sup>3</sup>
- No mercury allowing for non-hazardous waste disposal
- Emit virtually no UV/IR light in the beam



### MasterClass ExpertColor PAR LED plastic lamps

Catalog Number	Model Number	UPC Code	Product Description	Watts (W)	Base	CRI (min)	CCT (K)	Lifespan (hrs)	Lumens (lm)	MBCP	Volts (V)	Energy Star	Case/Pallet Qty	Dist. Center	
<b>MasterClass ExpertColor - PAR20</b>															
535260	929001921804	46677535261	8.5PAR20/PER/927/F25/DIM/EC/120V 6/1FB	8.5	E26	80	2700	25000	600	2450	120	2326513	6/2244	TN	
535278	929001921904	46677535278	8.5PAR20/PER/930/F25/DIM/EC/120V 6/1FB	8.5	E26	80	3000	25000	610	2550	120	2326512	6/2244	TN	
535300	929001922204	46677535308	8.5PAR20/PER/930/F40/DIM/EC/120V 6/1FB	8.5	E26	80	3000	25000	610	1100	120	2326509	6/2244	TN	
<b>MasterClass ExpertColor - PAR30L</b>															
470954	929001340904	46677470951	12PAR30L/EC/F25/927/DIM/120V 6/1	12	E26	90	2700	40000	800	4200	120	2301698	6/768	TN	
470962	929001341004	46677470968	12PAR30L/EC/F40/927/DIM/120V 6/1	12	E26	90	2700	40000	800	1800	120	2301699	6/768	TN	
471037	929001285604	46677471033	12PAR30L/EC RETAIL/S10/930/DIM 6/1	12	E26	90	3000	40000	880	10000	120	2301779	6/768	TN	
471045	929001285704	46677471040	12PAR30L/EC RETAIL/F25/930/DIM 6/1	12	E26	90	3000	40000	880	4500	120	2301780	6/768	PA	
471052	929001285804	46677471057	12PAR30L/EC RETAIL/F40/930/DIM 6/1	12	E26	90	3000	40000	880	2000	120	2301781	6/768	TN	
470970	929001341104	46677470975	12PAR30L/EC/F25/940/DIM/120V 6/1	12	E26	90	4000	40000	900	4800	120	2301701	6/768	PA	
470988	929001341204	46677470982	12PAR30L/EC/F40/940/DIM/120V 6/1	12	E26	90	4000	40000	900	2100	120	2301700	6/768	TN	

1. Tested to B50 L70 requirement. LED lifetime means the length of time (in hours) until half of the LED light sources maintain at least 70% of their initial lumen output (B50, L70).  
 2. A 17W PAR38 LED lamp uses up to 88% less energy than traditional halogen lamps.  
 3. See [www.signify.com/warranties](http://www.signify.com/warranties) for details.

## LED Spots

### MasterClass ExpertColor PAR



Easy to replace/retrofit in most current halogen fixtures



## Why choose MasterClass ExpertColor PAR LED Lamps?

- Consistent color and lumen maintenance over life of product
- Deep dimming below 5%
- Up to 90% energy savings compared to halogen lamps<sup>2</sup>
- Average life rating of up to 40,000 hrs<sup>1</sup>
- Up to 5-year limited warranty<sup>3</sup>
- No mercury allowing for non-hazardous waste disposal
- Emit virtually no UV/IR light in the beam

### MasterClass ExpertColor PAR LED plastic lamps

Catalog Number	Model Number	UPC Code	Product Description	Watts (W)	Base	CRI (min)	CCT (K)	Lifespan (hrs)	Lumens (lm)	MBCP	Volts (V)	Energy Star	Case/Pallet Qty	Dist. Center
<b>MasterClass ExpertColor - PAR30S</b>														
470906	929001340304	46677470906	12PAR30S/EC/F25/927/DIM/120V 6/1	12	E26	90	2700	40000	800	4200	120	2301704	6/960	PA, TN
470922	929001340604	46677470920	12PAR30S/EC/F25/927/DIM/120V B 6/1	12	E26	90	2700	40000	800	4200	120	2301706	6/960	TN
470914	929001340404	46677470913	12PAR30S/EC/F40/927/DIM/120V 6/1	12	E26	90	2700	40000	800	1800	120	2301705	6/960	CA, TN, PA
470948	929001340804	46677470944	12PAR30S/EC/F40/940/DIM/120V	12	E26	90	4000	40000	900	2100	120	2301708	6/960	PA
471060	929001285904	46677471064	12PAR30S/EC RETAIL/S10/930/DIM 6/1	12	E26	90	3000	40000	880	10000	120	2301726	6/960	TN
471078	929001286004	46677471071	12PAR30S/EC RETAIL/F25/930/DIM 6/1	12	E26	90	3000	40000	880	4500	120	2301732	6/960	CA, TN, PA
471086	929001286104	46677471088	12PAR30S/EC RETAIL/F40/930/DIM 6/1	12	E26	90	3000	40000	880	2000	120	2301733	6/960	CA, TN, PA
470930	929001340704	46677470937	12PAR30S/EC/F25/940/DIM/120V	12	E26	90	4000	40000	900	4800	120	2301707	6/960	TN
<b>MasterClass ExpertColor - PAR38</b>														
470823	929001339404	46677470821	17PAR38/EC/S8/927/DIM/120V 10/1	17	E26	90	2700	40000	1100	21000	120	2301710	6/420	TN
470831	929001339504	46677470838	17PAR38/EC/F25/927/DIM/120V 6/1	17	E26	90	2700	40000	1100	5800	120	2301711	6/420	CA, TN, PA
470864	929001339804	46677470869	17PAR38/EC/F25/927/DIM/120V B 6/1	17	E26	90	2700	40000	1100	5800	120	2301713	6/420	TN
470849	929001339604	46677470845	17PAR38/EC/F40/927/DIM/120V 6/1	17	E26	90	2700	40000	1100	2600	120	2301712	6/420	TN
470996	929001285204	46677470999	17PAR38/EC RETAIL/S8/930/DIM 6/1	17	E26	90	3000	40000	1200	22000	120	2301736	6/420	PA, TN
471003	929001285304	46677471002	17PAR38/EC RETAIL/F25/930/DIM 6/1	17	E26	90	3000	40000	1200	6000	120	2301742	6/420	CA, TN, PA
471029	929001285504	46677471026	17PAR38/EC RETAIL/F25/930/DIM 6/1	17	E26	90	3000	40000	1200	6000	120	2301745	6/420	CA
471011	929001285404	46677471019	17PAR38/EC RETAIL/F40/930/DIM 6/1	17	E26	90	3000	40000	1200	2700	120	2301744	6/420	TN
471797	929001369804	46677471798	17PAR38/EXPERTCOLOR/S8/940/DIM/120V 6/1	17	E26	90	4000	40000	1300	25000	120	2301717	6/420	TN
470872	929001340004	46677470876	17PAR38/EC/F25/940/DIM/120V 6/1	17	E26	90	4000	40000	1250	6500	120	2301714	6/420	TN
470880	929001340104	46677470883	17PAR38/EC/F40/940/DIM/120V 6/1	17	E26	90	4000	40000	1250	3000	120	2301716	6/420	CA, TN, PA

1. Tested to B50 L70 requirement. LED lifetime means the length of time (in hours) until half of the LED light sources maintain at least 70% of their initial lumen output (B50, L70).  
 2. A 17W PAR38 LED lamp uses up to 88% less energy than traditional halogen lamps.  
 3. See [www.signify.com/warranties](http://www.signify.com/warranties) for details.

## LED Spots

### MasterClass TrueForce PAR



**Type B** – Ballast bypass lamps

## Why choose MasterClass TrueForce PAR LED Lamps?

- Unique single-optic lens design for accent lighting reduces glare to improve shopper experience
- High lumen LED PAR lamps that are the perfect transition from CDM lamps
- 25,000-hour rated average life for ENERGY STAR® qualified lamps<sup>1</sup>
- 3-year limited warranty<sup>2</sup>
- No mercury allowing for non-hazardous waste disposal
- Emit virtually no UV/IR light in the beam



## MasterClass TrueForce PAR LED aluminum lamps

Catalog Number	Model Number	UPC Code	Product Description	Watts (W)	Base	CRI (min)	CCT (K)	Lifespan (hrs)	Lumens (lm)	MBCP	Volts (V)	Energy Star	Case/Pallet Qty	Dist. Center	
<b>MasterClass TrueForce – PAR30L</b>															
534644	929001917004	46677534646	25.5PAR30L/PER/830/S15/ND/120-277V 6/1FB	25.5	E26	80	3000	25000	2500	16000	120-277	2361912	6/768	TN	
534651	929001917104	46677534653	25.5PAR30L/PER/830/F25/ND/120-277V 6/1FB	25.5	E26	80	3000	25000	2500	11500	120-277	2361913	6/768	TN	
534669	929001917204	46677534660	25.5PAR30L/PER/930/S15/ND/120-277V 6/1FB	25.5	E26	90	3000	25000	2150	13500	120-277	2361916	6/768	TN	
534677	929001917304	46677534677	25.5PAR30L/PER/930/F25/ND/120-277V 6/1FB	25.5	E26	90	3000	25000	2150	10000	120-277	2361915	6/768	TN	
<b>MasterClass TrueForce – PAR30S</b>															
534685	929001917404	46677534684	23PAR30S/PER/930/S15/ND/120V 6/1FB	23	E26	90	3000	25000	1900	12000	120	2345872	6/960	TN	
534693	929001917504	46677534691	23PAR30S/PER/930/F25/ND/120V 6/1FB	23	E26	90	3000	25000	1900	9000	120	2345871	6/960	TN	
<b>MasterClass TrueForce – PAR38</b>															
534602	929001916804	46677534608	33PAR38/PER/830/S15/DIM/120V 6/1FB	33	E26	80	3000	25000	3000	35000	120	2326581	6/420	TN	
534628	929001919604	46677534622	33PAR38/PER/830/S15/DIM/120V B 6/1FB	33	E26	80	3000	25000	3000	35000	120	2326579	6/420	TN	
534636	929001919704	4477534639	33PAR38/PER/830/F25/DIM/120V B 6/1FB	33	E26	80	3000	25000	3000	10000	120	2326578	6/420	TN	
534610	929001916904	46677534615	33PAR38/PER/830/F25/DIM/120V 6/1FB	33	E26	80	3000	25000	3000	10000	120	2326580	6/420	CA, TN, PA	
534594	929001916704	46677534592	36PAR38/PER/830/F25/ND/120V 6/1FB	36	E26	80	3000	25000	3800	11400	120	2326516	6/420	TN	
569723	929003063504	46677569723	27PAR38TrueF 830 F15 DIM 120V-277V 6/1FB	27	E26	80	3000	25000	2800	N/A	120-277	Pending	6/120	PA	
569731	929003063604	46677569730	27PAR38TrueF 830 F25 DIM 120V-277V 6/1FB	27	E26	80	3000	25000	2800	N/A	120-277	Pending	6/120	PA	

1. Tested to B50 L70 requirement. LED lifetime means the length of time (in hours) until half of the LED light sources maintain at least 70% of their initial lumen output (B50, L70).  
 2. See [www.signify.com/warranties](http://www.signify.com/warranties) for details.



# PHILIPS

## LED Spots

### CorePro Plastic PAR



Contemporary plastic lamp design comes in white with select models in black to match fixtures at retail.



### Why choose CorePro PAR LED Lamps?

- Average life rating of 25,000 hours<sup>1</sup>
- Easy to replace/retrofit in most current halogen fixtures
- 3-year limited warranty<sup>2</sup>
- Complies with Title 20 and JA8 regulations
- No mercury allowing for non-hazardous waste disposal
- Emit virtually no UV/IR light in the beam

### CorePro PAR LED plastic lamps

Catalog Number	Model Number	UPC Code	Product Description	Watts (W)	Base	CRI (min)	CCT (K)	Lifespan (hrs)	Lumens (lm)	MBCP	Volts (V)	Energy Star	Case/Pallet Qty	Dist. Center
<b>CorePro Plastic - PAR30S dimmable (plastic)</b>														
546985	929002045604	46677546984	9.4PAR30S/COR/930/F25/DIM/120V T20 6/1FB	9.4	E26	80	3000	25000	850	2910	120	2345853	6/1320	CA
577759	929003466904	46677577759	9.4PAR30S/COR/935/F25/DIM/120V/T20 6/1FB	9.4	E26	90	3500	25000	850	2910	120	2390417	6/960	CA
<b>CorePro Plastic - PAR38 dimmable (plastic)</b>														
551887	929002238204	46677551889	10PAR38/COR/930/F25/DIM/120V T20 6/1FB	10	E26	90	3000	25000	900	3698	120	2349513	6/384	TN
546945	929002045204	46677546946	14PAR38/COR/930/F25/DIM/120V T20 6/1FB	14	E26	90	3000	25000	1300	5382	120	2345857	6/384	CA
576470	929003133804	46677576479	14PAR38/COR/930/F25/D/P/B/ULW/T20 6/1FB	14	E26	90	3000	25000	1300	5382	120	2383465	6/420	TN
577734	929003466704	46677577735	14PAR38/COR/935/F25/DIM/120V/T20 6/1FB	14	E26	90	3500	25000	1300	5382	120	2390201	6/420	CA
577742	929003466804	46677577742	14PAR38/COR/940/F25/DIM/120V/T20 6/1FB	14	E26	90	4000	25000	1300	5382	120	2390205	6/420	CA

1. Tested to B50 L70 requirement. LED lifetime means the length of time (in hours) until half of the LED light sources maintain at least 70% of their initial lumen output (B50, L70).  
 2. See [www.signify.com/warranties](http://www.signify.com/warranties) for details.

# PHILIPS

## LED Spots

### CorePro Glass PAR

Single optic lens reduces glare to help improve shopping experience



## Why choose CorePro PAR LED Lamps?

- 25,000-hour rated average life for ENERGY STAR® qualified lamps<sup>1</sup>
- Glass finish to replicate look and feel of traditional halogen PARs
- Wet location rated
- 3-year limited warranty<sup>2</sup>



## CorePro PAR LED glass lamps

Catalog Number	Model Number	UPC Code	Product Description	Watts (W)	Base	CRI (min)	CCT (K)	Lifespan (hrs)	Lumens (lm)	MBCP	Volts (V)	Energy Star	C/P Qty	Dist. Center
<b>CorePro Glass – PAR20</b>														
568105	929003026304	46677568108	5.5PAR20/LED/F25/927-922/G/DIM/T20 6/1FB	5.5	E26	90	2700 WG	25000	500	1300	120	2389932	6/2244	CA, TN, PA
568063	929003026104	46677568061	5.5PAR20/LED/F25/930/DIM/G/T20 6/1FB	5.5	E26	90	3000	25000	500	1500	120	2389226	6/2244	CA, TN, PA
568071	929003026204	46677568078	5.5PAR20/LED/F25/940/DIM/G/T20 6/1FB	5.5	E26	90	4000	25000	500	1500	120	2389228	6/2244	CA
568113	929003026704	46677568115	5.5PAR20/LED/F40/927-922/DIM/G/T20 6/1FB	5.5	E26	90	2200-2700	25000	500	800	120	2389934	6/2244	CA, TN, PA
568089	929003026404	46677568085	5.5PAR20/LED/F40/930/DIM/G/T20 6/1FB	5.5	E26	90	3000	25000	500	1000	120	2389225	6/2244	CA, TN, PA
568097	929003026504	46677568092	5.5PAR20/LED/F40/940/DIM/G/T20 6/1FB	5.5	E26	90	4000	25000	500	1000	120	2389227	6/2244	CA, TN
<b>CorePro Glass – PAR30L</b>														
567941	929003026904	46677567941	8.5PAR30L/LED/927/F25/DIM/GULW/T20 6/1FB	8.5	E26	90	2700	25000	800	3300	120	2390043	6/768	CA, TN, PA
567957	929003027004	46677567958	8.5PAR30L/LED/930/F25/DIM/GULW/T20 6/1FB	8.5	E26	90	3000	25000	850	3300	120	2390037	6/768	CA, TN, PA
567965	929003027104	46677567965	8.5PAR30L/LED/940/F25/DIM/GULW/T20 6/1FB	8.5	E26	90	4000	25000	850	3300	120	2390041	6/768	CA, TN, PA
567973	929003027204	46677567972	8.5PAR30L/LED/927/F40/DIM/GULW/T20 6/1FB	8.5	E26	90	2700	25000	800	1600	120	2390045	6/768	CA, TN, PA
567999	929003027404	46677567996	8.5PAR30L/LED/940/F40/DIM/GULW/T20 6/1FB	8.5	E26	90	4000	25000	850	1600	120	2390039	6/768	PA, TN
567981	929003027304	46677567989	8.5PAR30L/LED/930/F40/DIM/GULW/T20 6/1FB	8.5	E26	90	3000	25000	850	1600	120	2390035	6/768	CA, TN, PA

1. Tested to B50 L70 requirement. LED lifetime means the length of time (in hours) until half of the LED light sources maintain at least 70% of their initial lumen output (B50, L70).

2. See [www.signify.com/warranties](http://www.signify.com/warranties) for details.



(continued)

#### CorePro PAR LED glass lamps

Catalog Number	Model Number	UPC Code	Product Description	Watts (W)	Base	CRI (min)	CCT (K)	Lifespan (hrs)	Lumens (lm)	MBCP	Volts (V)	Energy Star	C/P Qty	Dist. Center
<b>CorePro Glass - PAR30S</b>														
568006	929003027704	46677568009	8.5PAR30S/LED/927/F25/DIM/GULW/T20 6/1FB	8.5	E26	90	2700	25000	800	3300	120	2390044	6/960	CA, TN, PA
568014	929003027804	46677568016	8.5PAR30S/LED/930/F25/DIM/GULW/T20 6/1FB	8.5	E26	90	3000	25000	850	3300	120	2390038	6/960	CA, TN, PA
568022	929003027904	46677568023	8.5PAR30S/LED/940/F25/DIM/GULW/T20 6/1FB	8.5	E26	90	4000	25000	850	3300	120	2390042	6/960	TN
568030	929003028004	46677568030	8.5PAR30S/LED/927/F40/DIM/GULW/T20V 6/1FB	8.5	E26	90	2700	25000	850	1600	120	Pending	6/960	TN
568048	929003028104	46677568047	8.5PAR30S/LED/930/F40/DIM/GULW/T20V 6/1FB	8.5	E26	90	3000	25000	850	1600	120	2390036	6/960	CA, TN, PA
568055	929003028204	46677568054	8.5PAR30S/LED/940/F40/DIM/GULW/T20 6/1FB	8.5	E26	90	4000	25000	850	1600	120	2390040	6/960	CA, TN, PA
<b>CorePro Glass - PAR38</b>														
567859	929003028504	46677567859	10PAR38/LED/927/F25/DIM/GULW/120V 6/1FB	10	E26	90	2700	25000	900	4100	120	2389301	6/384	CA, TN, PA
567867	929003028604	46677567866	10PAR38/LED/930/F25/DIM/GULW/T20V 6/1FB	10	E26	90	3000	25000	900	4100	120	2389303	6/384	CA, TN, PA
567925	929003028704	46677567927	10PAR38/LED/935/F25/DIM/GULW/T20 6/1FB	10	E26	90	3500	25000	900	4100	120	2389320	6/384	CA
567875	929003028804	46677567873	10PAR38/LED/940/F25/DIM/GULW/T20 6/1FB	10	E26	90	4000	25000	900	4100	120	2389322	6/384	CA, TN
567883	929003028904	46677567880	10PAR38/LED/950/F25/DIM/GULW/T20 6/1FB	10	E26	90	5000	25000	900	4100	120	2389324	6/384	CA
567891	929003029004	46677567897	10PAR38/LED/927/F40/DIM/GULW/T20 6/1FB	10	E26	90	2700	25000	900	1800	120	2389300	6/384	CA, TN, PA
567909	929003029104	46677567903	10PAR38/LED/930/F40/DIM/GULW/T20 6/1FB	10	E26	90	3000	25000	900	1900	120	2389302	6/384	CA, TN, PA
567933	929003029204	46677567934	10PAR38/LED/935/F40/DIM/GULW/T20 6/1FB	10	E26	90	3500	25000	900	1900	120	2389319	6/384	CA
567917	929003029304	46677567910	10PAR38/LED/940/F40/DIM/GULW/T20 6/1FB	10	E26	90	4000	25000	900	1900	120	2389321	6/384	CA, TN, PA
567750	929003029504	46677567750	13PAR38/LED/927/F25/DIM/GULW/T20 6/1FB	13	E26	90	2700	25000	1200	5700	120	2389011	6/384	CA, TN, PA
567768	929003029604	46677567767	13PAR38/LED/930/F25/DIM/GULW/T20 6/1FB	13	E26	90	3000	25000	1200	6000	120	2389008	6/384	CA, TN, PA
567834	929003029704	46677567835	13PAR38/LED/935/F25/DIM/GULW/T20 6/1FB	13	E26	90	3500	25000	1200	6000	120	2388999	6/384	CA
567776	929003029804	46677567774	13PAR38/LED/940/F25/DIM/GULW/T20 6/1FB	13	E26	90	4000	25000	1200	6000	120	2389007	6/384	CA, TN
567784	929003029904	46677567781	13PAR38/LED/950/F25/DIM/GULW/T20 6/1FB	13	E26	90	5000	25000	1200	6000	120	2389009	6/384	CA, TN, PA
567792	929003030004	46677567798	13PAR38/LED/927/F40/DIM/GULW/T20 6/1FB	13	E26	90	2700	25000	1200	2450	120	2388998	6/384	CA, TN, PA
567800	929003030104	46677567804	13PAR38/LED/930/F40/DIM/GULW/T20 6/1FB	13	E26	90	3000	25000	1200	2500	120	2389013	6/384	CA, TN, PA
567842	929003030204	46677567842	13PAR38/LED/935/F40/DIM/GULW/T20 6/1FB	13	E26	90	3500	25000	1200	2500	120	2389010	6/384	CA
567818	929003030304	46677567811	13PAR38/LED/940/F40/DIM/GULW/T20 6/1FB	13	E26	90	4000	25000	1200	2500	120	2389012	6/384	CA
567826	929003030404	46677567828	13PAR38/LED/950/F40/DIM/GULW/T20 6/1FB	13	E26	90	5000	25000	1200	2500	120	2388997	6/384	CA, TN, PA
<b>CorePro Plastic - PAR38 non-dimming</b>														
555300	929001892723	46677555306	15.5PAR38/LED/950/F50/ND/grow/T20 4/1CT	15.5	E26	90	5000	25000	1325	-	110-240	No	4/468	TN
576462	929001892733	046677576462	15.5PAR38/LED/950/F50/ND/GROW/T20 4/1PF	15.5	E26	90	5000	25000	1325	-	110-240	No	4/288	TN

1. Tested to B50 L70 requirement. LED lifetime means the length of time (in hours) until half of the LED light sources maintain at least 70% of their initial lumen output (B50, L70).
2. See [www.signify.com/warranties](http://www.signify.com/warranties) for details.

Clearly defined beam spread enhancing the appearance of items on display



### Why choose MasterClass MR16 LED Lamps?

- Easy to replace/retrofit in most current halogen fixtures
- Compatible with most commonly available halogen transformers
- Average life rating of 25,000 hours<sup>1</sup>
- No mercury allowing for non-hazardous waste disposal
- Emit virtually no UV/IR light in the beam
- 3-year limited warranty<sup>2</sup>



### MasterClass MR16 LED lamps

Catalog Number	Model Number	UPC Code	Product Description	Watts (W)	Base	CRI (min)	CCT (K)	Lifespan (hrs)	Lumens (lm)	MBCP	Volts (V)	Energy Star	C/P Qty	Dist. Center
<b>MasterClass Warm Glow – MR16 (aluminum)</b>														
574400	929003087104	46677574406	6.5MR16/F25/2700-2200 DIM 12V	6.5	GU5.3	80	2200-2700	25000	455	1601	12V AC elect.	Pending	10/8160	PA
574418	929003087204	46677574413	6.5MR16/F35/2700-2200 DIM 12V	6.5	GU5.3	80	2200-2700	25000	455	950	12V AC elect.	2388583	10/8160	PA
<b>MasterClass ExpertColor – MR16 (aluminum)</b>														
573576	929003080704	46677573577	7.8MR16/PER/927/S10/Dim/EC/12V 10/1FB	7.8	GU5.3	95	2700	25000	480	5300	12V AC elect.	2390066	10/8160	PA
573584	929003080804	46677573584	7.8MR16/PER/930/S10/Dim/EC/12V 10/1FB	7.8	GU5.3	95	3000	25000	480	5300	12V AC elect.	2390147	10/8160	CA, TN, PA
573600	929003081004	46677573607	7.8MR16/PER/927/F25/Dim/EC/12V 10/1FB	7.8	GU5.3	95	2700	25000	480	2330	12V AC elect.	Pending	10/8160	CA, TN, PA
573618	929003081104	46677573614	7.8MR16/PER/930/F25/Dim/EC/12V 10/1FB	7.8	GU5.3	95	3000	25000	480	2330	12V AC elect.	2390148	10/8160	CA, TN, PA
573626	929003081204	46677573621	7.8MR16/PER/940/F25/Dim/EC/12V 10/1FB	7.8	GU5.3	95	4000	25000	540	2600	12V AC elect.	2390156	10/8160	PA
573634	929003081304	46677573638	7.8MR16/PER/927/F35/Dim/EC/12V 10/1FB	7.8	GU5.3	95	2700	25000	480	1320	12V AC elect.	2390146	10/8160	PA
573642	929003081404	46677573645	7.8MR16/PER/930/F35/Dim/EC/12V 10/1FB	7.8	GU5.3	95	3000	25000	480	1320	12V AC elect.	2390151	10/8160	PA
573659	929003081504	46677573652	7.8MR16/PER/940/F35/Dim/EC/12V 10/1FB	7.8	GU5.3	95	4000	25000	540	1450	12V AC elect.	2390157	10/8160	CA, PA
573592	929003080904	46677573591	7.8MR16/PER/940/S10/Dim/EC/12V 10/1FB	7.8	GU5.3	95	4000	25000	540	5900	12V AC elect.	2390154	10/8160	TN
<b>MasterClass – MR16 dimmable (complies with Title 20 and JA8 regulations)</b>														
573535	929003080304	46677573539	6.3MR16/LED/F25/927/D/EC/12V T20 10/1FB	6.3	GU5.3	91	2700	25000	470	1960	12V AC elect.	Pending	10/8160	CA, TN, PA
573543	929003080404	46677573546	6.3MR16/LED/F25/930/D/EC/12V T20 10/1FB	6.3	GU5.3	91	3000	25000	470	1960	12V AC elect.	2390165	10/8160	CA, TN, PA
577619	929003155304	46677577612	6.3MR16/LED/F25/935/DIM/12V T20 10/1FB	6.3	GU5.3	90	3500	25000	470	1960	12V AC elect.	2390169	10/8160	CA
573550	929003080504	46677573553	6.3MR16/LED/F35/927/D/EC/12V T20 10/1FB	6.3	GU5.3	91	2700	25000	470	1110	12V AC elect.	2390167	10/8160	CA
573568	929003080604	46677573560	6.3MR16/LED/F35/930/D/EC/12V T20 10/1FB	6.3	GU5.3	91	3000	25000	470	1110	12V AC elect.	2390168	10/8160	CA

1. Tested to B50 L70 requirement. LED lifetime means the length of time (in hours) until half of the LED light sources maintain at least 70% of their initial lumen output (B50, L70).  
 2. See [www.signify.com/warranties](http://www.signify.com/warranties) for details.



Glass housing and single optic lens provides **crisp and uniform beam**



### Why choose CorePro GU10 & MR16 LED Lamps?

- Suitable for use in enclosed fixtures<sup>1</sup>
- "Perfect fit" mechanical design fits most MR16 fixtures
- Average life rating of 25,000 hours<sup>2</sup>
- 3-year limited warranty<sup>3</sup>

### CorePro GU10 & MR16 LED lamps

Catalog Number	Model Number	UPC Code	Product Description	Watts (W)	Base	CRI (min)	CCT (K)	Lifespan (hrs)	Lumens (lm)	MBCP	Volts (V)	Energy Star	C/P Qty	Dist. Center
<b>CorePro Glass - GU10 (glass)</b>														
471565	929002055304	46677471569	4GU10/LED/927-22/F35/G/WG/T20 10/1	4	GU10	90	2700 WG	25000	380	600	120	2340869	10/5700	CA, TN, PA
468140	929002055504	46677468149	4GU10/LED/930/F35/DIM/G/120V T20 10/1	4	GU10	90	3000	25000	380	600	120	2340873	10/5700	CA, TN, PA
<b>CorePro Glass - MR16 (aluminum)</b>														
573865	929003076204	46677573867	7MR16/LED/827/F25/DIM 12V 10/1FB	7	GU5.3	80	2700	25000	515	2400	12V AC elect.	2384079	10/8160	CA, TN, PA
573881	929003076404	46677573881	7MR16/LED/827/F35/DIM 12V 10/1FB	7	GU5.3	80	2700	25000	515	1350	12V AC elect.	2384081	10/8160	CA, TN, PA
573873	929003076304	46677573874	7MR16/LED/830/F25/DIM 12V 10/1FB	7	GU5.3	80	3000	25000	515	2500	12V AC elect.	2384080	10/8160	PA
573899	929003076504	46677573898	7MR16/LED/830/F35/DIM 12V 10/1FB	7	GU5.3	80	3000	25000	515	1350	12V AC elect.	2384082	10/8160	CA, TN, PA
573907	929003072504	46677573904	8MR16/LED/827/F25/DIM 12V 10/1FB	8	GU5.3	80	2700	25000	600	3100	12V AC elect.	2383607	10/8160	CA, TN, PA
573931	929003072704	46677573935	8MR16/LED/827/F35/DIM 12V 10/1FB	8	GU5.3	80	2700	25000	600	1700	12V AC elect.	2383610	10/8160	CA, TN, PA
573915	929003072604	46677573911	8MR16/LED/830/F25/DIM 12V 10/1FB	8	GU5.3	80	3000	25000	620	3250	12V AC elect.	2383608	10/8160	CA, TN, PA
573949	929003072804	46677573942	8MR16/LED/830/F35/DIM 12V 10/1FB	8	GU5.3	80	3000	25000	620	1700	12V AC elect.	2383611	10/8160	CA, TN, PA
573955	929003072904	46677573959	8MR16/LED/840/F35/DIM 12V 10/1FB	8	GU5.3	80	4000	25000	660	1800	12V AC elect.	2383612	10/8160	CA, TN
573923	929003076604	46677573928	8MR16/LED/840/F25/DIM 12V 10/1FB	8	GU5.3	80	4000	25000	660	3350	12V AC elect.	Pending	10/8160	CA, TN, PA

1. See Technical Application Guide for complete details. All lamps include an over temperature protection (OTP) feature that systematically reduces the lamp power and consequently its internal temperature should it be subjected to abnormally high ambient temperature conditions.  
 2. Tested to B50 L70 requirement. LED lifetime means the length of time (in hours) until half of the LED light sources maintain at least 70% of their initial lumen output (B50, L70).  
 3. See [www.signify.com/warranties](http://www.signify.com/warranties) for details.

# PHILIPS

## LED Spots

### MasterClass AR111



**Best-in-class flux,  
intensity and beam quality**

## Why choose MasterClass AR111 LED Lamps?

- Saves 80% energy when compared to a 75W halogen AR111<sup>1</sup>
- Excellent compatibility with most traditional halogen transformers
- “Perfect fit” mechanical design fits AR111 fixtures
- Anti-glare optical bridge to increase visual comfort
- Average life rating up to 40,000 hours<sup>2</sup>
- Up to 5-year limited warranty<sup>3</sup>



## MasterClass AR111 LED plastic lamps

Catalog Number	Model Number	UPC Code	Product Description	Watts (W)	Base	CRI (min)	CCT (K)	Lifespan (hrs)	Lumens (lm)	MBCP	Volts (V)	Energy Star	C/P Qty	Dist. Center
MasterClass - AR111														
552448	929002238404	46677552442	12AR111/LED/927/S8/DIM/EC 12V 6/1FB	12	G53	97	2700	40000	650	8000	12V AC elect.	No Category	6/858	TN
552406	929002238504	46677552404	12AR111/LED/930/S8/DIM/EC 12V 6/1FB	12	G53	97	3000	40000	680	8000	12V AC elect.	No Category	6/858	TN
552414	929002239004	46677552411	16AR111/LED/927/F25/DIM/EC 12V FB 6/1	16	G53	97	2700	40000	900	3500	12V AC elect.	No Category	6/858	TN
552422	929002239104	46677552428	16AR111/LED/930/F25/DIM/EC 12V 6/1FB	16	G53	97	3000	40000	900	3500	12V AC elect.	No Category	6/858	TN
552430	929002239304	46677552435	16AR111/LED/927/F40/DIM/EC 12V 6/1FB	16	G53	97	2700	40000	900	1400	12V AC elect.	No Category	6/858	TN
552372	929002239604	46677552374	20AR111/LED/930/F15 DIM 12V 6/1FB	20	G53	91	3000	25000	1200	8000	12V AC elect.	No Category	6/858	TN
552380	929002239804	46677552381	20AR111/LED/927/F25 DIM 12V 6/1FB	20	G53	91	2700	25000	1150	4000	12V AC elect.	No Category	6/858	TN
552398	929002239904	46677552398	20AR111/LED/930/F25 DIM 12V 6/1FB	20	G53	90	3000	40000	1240	N/A	12V AC elect.	No Category	6/858	TN

1. Light output comparison based upon the ENERGY STAR® Integral LED Lamp Center Beam Intensity Benchmark tool which can be found at [EnergyStar.gov/LEDbulbs](http://EnergyStar.gov/LEDbulbs).
2. Tested to B50 L70 requirement. LED lifetime means the length of time (in hours) until half of the LED light sources maintain at least 70% of their initial lumen output (B50, L70).
3. See [www.signify.com/warranties](http://www.signify.com/warranties) for details.

## LED Spots

### CorePro Party A19 & PAR

Glass PAR and A19 lamps are UL wet rated for indoor and outdoor use



## Why choose CorePro Party A19 & PAR LED Lamps?

- Bright colorful lighting that offers a festive touch perfect for special occasions, parties and holidays
- LED A19 lamps are available in up to six colors in durable plastic or a classic glass finish
- Average life rating of 10,000 hours<sup>1</sup>

### CorePro Party A19 & PAR LED lamps

Catalog Number	Model Number	UPC Code	Product Description	Watts (W)	Base	CRI (min)	CCT (K)	Lifespan (hrs)	Lumens (lm)	Volts (V)	Energy Star	C/P Qty	Dist. Center
<b>MasterClass Party Lamps – A19 (glass) non-dimming</b>													
568881	929001937553	46677568887	4A19/PER/PURPLE/G/E26/ND 4/1PF	4	E26	N/A	Purple	10000	N/A	120	Not ES	4/1484	CA, TN, PA
568865	929001937353	46677568863	4A19/PER/BLUE/G/E26/ND 4/1PF	4	E26	N/A	Blue	10000	N/A	120	Not ES	4/1484	CA, TN, PA
568873	929001937453	46677568870	4A19/PER/GREEN/G/E26/ND 4/1PF	4	E26	N/A	Green	10000	N/A	120	Not ES	4/1484	CA, TN, PA
568857	929001937253	46677568856	4A19/PER/YELLOW/G/E26/ND 4/1PF	4	E26	N/A	Yellow	10000	N/A	120	Not ES	4/1484	CA, TN, PA
568840	929001937153	46677568849	4A19/PER/ORANGE/G/E26/ND 4/1PF	4	E26	N/A	Orange	10000	N/A	120	Not ES	4/1484	CA, TN, PA
568832	929001937053	46677568832	4A19/PER/RED/G/E26/ND 4/1PF	4	E26	N/A	Red	10000	N/A	120	Not ES	4/1484	CA, TN, PA
<b>MasterClass Party Lamps – A19 (plastic) non-dimming</b>													
580423	929001998313	046677580421	8A19/LED/PURPLE/ND 120V 4/1FB	8	E26	N/A	Purple	10950	N/A	120	No Category	4/2240	PA
463240	929001998005	46677463243	8A19/LED/BLUE/P/ND 120V 4/1FB	8	E26	N/A	Blue	10950	N/A	120	No Category	4/2240	PA
463281	929001997905	46677463281	8A19/LED/GREEN/P/ND 120V 4/1FB	8	E26	N/A	Green	10950	N/A	120	No Category	4/2240	PA
463257	929001998105	46677463250	8A19/LED/YELLOW/P/ND 120V 4/1FB	8	E26	N/A	Yellow	10950	N/A	120	No Category	4/2240	PA
580431	929001998213	046677580438	8A19/LED/ORANGE/P/ND 120V 4/1FB	8	E26	N/A	Orange	10950	N/A	120	No Category	4/2240	PA, TN
463273	929001997805	46677463274	8A19/LED/RED/P/ND 120V 4/1FB	8	E26	N/A	Red	10950	N/A	120	No Category	4/2240	PA
<b>MasterClass Party Lamps – PAR38 (glass) non-dimming</b>													
568261	929001306533	46677568269	13.5PAR38/PER/BLUE/G/E26/ND/ULW 3/1PF	13.5	E26	N/A	Blue	10000	N/A	120	Not ES	3/288	TN, PA
568287	929001306763	46677568283	13.5PAR38/PER/GREEN/G/E26/ND/ULW 3/1PF	13.5	E26	N/A	Green	10000	N/A	120	Not ES	3/288	CA, TN, PA
568279	929001306633	46677568276	13.5PAR38/PER/YELLOW/G/E26/ND/ULW 3/1PF	13.5	E26	N/A	Yellow	10000	N/A	120	Not ES	3/288	TN, PA
568295	929001306863	46677568290	13.5PAR38/PER/RED/G/E26/ND/ULW 3/1PF	13.5	E26	N/A	Red	10000	N/A	120	Not ES	3/288	TN, PA

1. Tested to B50 L70 requirement. LED lifetime means the length of time (in hours) until half of the LED light sources maintain at least 70% of their initial lumen output (B50, L70).







**Superior light quality**  
with high performance  
dimming



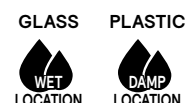
### Why choose MasterClass A-Shape LED Lamps?

- Up to 90% energy savings compared to incandescent lamps<sup>1</sup>
- Average life rating of 15,000 hours<sup>2</sup>
- Suitable for enclosed fixtures<sup>3</sup>
- Certain models dim to a warm glow similar to incandescent lamps
- Title 20 qualified for California applications
- 3-year limited warranty<sup>4</sup>

### MasterClass A-Shape LED lamps

Catalog Number	Model Number	UPC Code	Product Description	Watts (W)	Base	CRI (min)	CCT (K)	Lifespan (hrs)	Lumens (lm)	Volts (V)	Body	Energy Star	C/P Qty	Dist. Center
<b>A19 40W lamp equivalent dimming</b>														
549485	929001969504	46677549480	5A19/PER/927-922/CL/G/E26/WGX 1FB T20	5	E26	90	2700 WG	15000	450	120	2340637	6/1872	CA, PA	CA, PA
479428	929001940704	46677544522	5A19/PER/927-22/P/E26/WG 6/1FB T20	5	E26	90	2700 WG	15000	450	120	2340159	6/2700	CA, PA	CA, PA
<b>A19 60W lamp equivalent dimming</b>														
479444	929001940904	46677544539	8.8A19/PER/927-22/P/E26/WG 6/1FB T20	8.8	E26	90	2700 WG	15000	800	120	2340163	6/2430	CA, PA	CA, PA
549493	929001969604	46677549497	8A19/PER/927-922/CL/G/E26/WGX 1FB T20	8	E26	90	2700 WG	15000	800	120	2340629	6/1872	CA, PA	CA, PA
573436	929003083203	46677573430	8A19/PER/UD/FR/G/E26/WGD 4/2PFT20	8	E26	95	2700 WG	15000	800	120	2395541	4/784	TN	TN
<b>A19 75W equivalent lamps dimming</b>														
561000	929002285404	46677561000	12.2A19/PER/927-22/P/E26/WG 6/1FB T20	12.2	E26	90	2700 WG	15000	1100	120	2356660	6/2700	CA, PA	CA, PA
<b>A19 100W equivalent lamps dimming</b>														
561027	929002285504	46677561024	16A19/PER/927-22/P/E26/WG 6/1FB T20	16	E26	90	2700 WG	15000	1600	120	2356659	6/2700	CA, PA	CA, PA
<b>A19 150W equivalent lamps dimming</b>														
571497	929002343033	046677571498	29A21/PER/827/FR/P/E26/WG/HO 4/1PF	29	E26	80	2700 WG	15000	2610	120	No Category	4/1008	TN, CA	TN, CA
<b>3-way switching lamps</b>														
556928	929002285003	46677556921	18A21/LED/927/P/E26/3WAY ND 4/1FB T20	14-8-5	E26	90	2700	25000	1600-800-450	120	2352157	4/1280	TN, CA	TN, CA
571521	929002285133	46677571528	18.5A21/PER/927/FR/P/E26/3WAY/T20 4/1PF	18.5-13-6	E26	90	2700	15000	2150-1600-620	120	2397241	4/1008	TN, CA	TN, CA
<b>Dusk to Dawn lamps</b>														
573238	929002333693	46677573232	8.8A19/PER/927/FR/P/E26/D2D/T20 4/1PF	8.8	E26	90	2700	15000	800	120	2357765	4/1484	TN, CA	TN, CA

1. An 8.5W LED bulb uses up to 86% less energy than traditional incandescent bulbs.  
 2. Tested to B50 L70 requirement. LED lifetime means the length of time (in hours) until half of the LED light sources maintain at least 70% of their initial lumen output (B50, L70).  
 3. All MasterClass lamps listed on this page with the exception of the A21 150W equivalent lamps dimming (product number 558221) are suitable for enclosed fixtures.  
 4. See [www.signify.com/warranties](http://www.signify.com/warranties) for details.



# PHILIPS

## LED Bulbs

### CorePro A-Shape



**Uncompromising quality**  
with dependable  
performance

## Why choose CorePro A-Shape LED Lamps?

- Up to 90% energy savings compared to incandescent lamps<sup>1</sup>
- Average life rating of 15,000 hours<sup>2</sup>
- Selection of lamps suitable for enclosed fixtures
- No mercury allowing for non hazardous waste disposal
- Select lamps Title 20 qualified for California applications
- Expanded dimmable/non-dimmable portfolio



## CorePro A-Shape LED lamps

Catalog Number	Model Number	UPC Code	Product Description	Watts (W)	Base	CRI (min)	CCT (K)	Lifespan (hrs)	Lumens (lm)	Volts (V)	Energy Star	C/P Qty	Dist. Center
A19 40W lamp equivalent dimming (glass)													
556795	929001950933	46677556792	4.5A19/VIN/820/E26/CL/GL/DIM 4/FBH T20	4.5	E26	80	2000	15000	300	120	No Category	4/1764	CA, TN, PA
565788	929002988503	46677565787	5.5A19/VIN/927/E26/CL/G/SP DIM 1PF T20	5.5	E26	90	2700	15000	500	120	2393774	4/1288	CA, TN, PA
578534	929003497304	46677578534	5A19/LED/927/FR/Glass/E26/DIM 1FB T20	5	E26	90	2700	15000	450	120	2398590	10/1840	PA, CA
578542	929003497404	46677578541	5A19/LED/930/FR/Glass/E26/DIM 1FB T20	5	E26	90	3000	15000	450	120	2398591	10/1840	PA, CA
578559	929003497504	46677578558	5A19/LED/950/FR/Glass/E26/DIM 1FB T20	5	E26	90	5000	15000	450	120	2398592	10/1840	PA, CA
A19 40W lamp equivalent dimming (plastic)													
550400	929002035704	46677550400	5A19/PER/927/P/E26/DIM 6/1FB T20	5	E26	90	2700	15000	450	120	2346514	6/2700	PA, CA
550418	929002035804	46677550417	5A19/PER/930/P/E26/DIM 6/1FB T20	5	E26	90	3000	15000	450	120	2346513	6/2700	PA, TN
547042	929002035904	46677547042	5A19/PER/940/P/E26/DIM 6/1FB T20	5	E26	90	4000	15000	450	120	2346512	6/2700	CA, TN, PA
550426	929002036004	46677550424	5A19/PER/950/P/E26/DIM 6/1FB T20	5	E26	90	5000	15000	450	120	2346510	6/2700	CA, TN, PA
A19 60W lamp equivalent dimming (glass)													
578567	929003497604	46677578565	8A19/LED/927/FR/Glass/E26/DIM 1FB T20	8	E26	90	2700	15000	800	120	2398593	10/1840	CA, PA
578575	929003497704	46677578572	8A19/LED/930/FR/Glass/E26/DIM 1FB T20	8	E26	90	3000	15000	800	120	2398594	10/1840	CA, PA
578641	929003497804	46677578640	8A19/LED/950/FR/Glass/E26/DIM 1FB T20	8	E26	90	5000	15000	800	120	2398595	10/1840	CA, PA

1. Light output comparison based upon the ENERGY STAR® Integral LED Lamp Center Beam Intensity Benchmark tool which can be found at [EnergyStar.gov/LEDbulbs](http://EnergyStar.gov/LEDbulbs).
2. Tested to B50 L70 requirement. LED lifetime means the length of time (in hours) until half of the LED light sources maintain at least 70% of their initial lumen output (B50, L70).



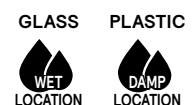


(continued)

### CorePro A-Shape LED lamps

Catalog Number	Model Number	UPC Code	Product Description	Watts (W)	Base	CRI (min)	CCT (K)	Lifespan (hrs)	Lumens (lm)	Volts (V)	Energy Star	C/P Qty	Dist. Center
<b>A19 60W lamp equivalent dimming (plastic)</b>													
550434	929002036104	46677550431	8.8A19/PER/927/P/E26/DIM 6/1FB T20	8.8	E26	90	2700	15000	800	120	2346758	6/2700	CA, TN, PA
550442	929002036204	46677550448	8.8A19/PER/930/P/E26/DIM 6/1FB T20	8.8	E26	90	3000	15000	800	120	2345793	6/2700	CA, TN, PA
557660	929002327504	46677557669	8.8A19/PER/930/P/GU24/DIM 6/1FB T20	8.8	GU24	90	3000	15000	800	120	2359545	6/2700	TN
545897	929002032304	46677545895	8.8A19/PER/940/P/E26/DIM 6/1FB T20	8.8	E26	90	4000	15000	800	120	2346760	6/2700	CA, TN, PA
550459	929002036304	46677550455	8.8A19/PER/950/P/E26/DIM 6/1FB T20	8.8	E26	90	5000	15000	800	120	2345796	6/2700	CA, TN, PA
<b>A19 75W equivalent lamps dimming (glass)</b>													
578583	929003497904	46677578589	9.5A19/LED/927/FR/Glass/E26/DIM 1FB T20	9.5	E26	90	2700	15000	1100	120	2398596	10/1260	CA, PA
578591	929003498004	46677578596	9.5A19/LED/930/FR/Glass/E26/DIM 1FB T20	9.5	E26	90	3000	15000	1100	120	2398597	10/1260	CA, PA
578609	929003498104	46677578602	9.5A19/LED/950/FR/Glass/E26/DIM 1FB T20	9.5	E26	90	5000	15000	1100	120	Pending	10/1260	CA, PA
<b>A19 75W equivalent lamps dimming (plastic)</b>													
561035	929002385204	46677561031	12.2A19/PER/927/P/E26/DIM 6/1FB T20	12.2	E26	90	2700	15000	1100	120	2367908	6/2700	CA, TN, PA
561043	929002385304	46677561048	12.2A19/PER/930/P/E26/DIM 6/1FB T20	12.2	E26	90	3000	15000	1100	120	2367909	6/2700	CA, TN, PA
561050	929002385404	46677561055	12.2A19/PER/940/P/E26/DIM 6/1FB T20	12.2	E26	90	4000	15000	1100	120	2367910	6/2700	CA, TN, PA
560994	929002285204	46677560997	12.2A19/PER/950/P/E26/DIM 6/1FB T20	12.2	E26	90	5000	15000	1100	120	2356657	6/2700	CA, TN, PA
<b>A19/ A21 100W equivalent lamps dimming (glass)</b>													
578617	929003498204	46677578619	12A19/LED/927/FR/Glass/E26/DIM 1FB T20	12	E26	90	2700	15000	1600	120	2398603	10/1260	CA, PA
578625	929003498304	46677578626	12A19/LED/930/FR/Glass/E26/DIM 1FB T20	12	E26	90	3000	15000	1600	120	2398604	10/1260	CA, PA
578633	929003498404	46677578633	12A19/LED/950/FR/Glass/E26/DIM 1FB T20	12	E26	90	5000	15000	1600	120	2398605	10/1260	CA, PA
<b>A19/ A21 100W equivalent lamps dimming (plastic)</b>													
561068	929002385504	46677561062	16A19/PER/927/P/E26/DIM 6/1FB T20	16	E26	90	2700	15000	1600	120	2367911	6/2700	CA, TN, PA
561076	929002385604	46677561079	16A19/PER/930/P/E26/DIM 6/1FB T20	16	E26	90	3000	15000	1600	120	2367912	6/2700	CA, TN, PA
558684	929002327634	046677558680	16A21/PER/930/P/GU24/DIM 4/1FB T20	16	GU24	90	3000	15000	1600	120	2359548	4/1280	TN
561456	929002385704	46677561451	16A19/PER/940/P/E26/DIM 6/1FB T20	16	E26	90	4000	15000	1600	120	2367913	6/2700	CA, TN, PA
561019	929002285304	46677561017	16A19/PER/950/P/E26/DIM 6/1FB T20	16	E26	90	5000	15000	1600	120	2356658	6/2700	CA, TN, PA
<b>A21 150W equivalent lamps dimming</b>													
571505	929002343133	46677571504	29A21/PER/850/FR/P/E26/D/HO 4/1PF	29	E26	80	5000	15000	2610	120	No Category	4/1008	CA, TN, PA

1. Light output comparison based upon the ENERGY STAR® Integral LED Lamp Center Beam Intensity Benchmark tool which can be found at [EnergyStar.gov/LEDbulbs](http://EnergyStar.gov/LEDbulbs).
2. Tested to B50 L70 requirement. LED lifetime means the length of time (in hours) until half of the LED light sources maintain at least 70% of their initial lumen output (B50, L70).





An affordable solution with unequaled Philips quality

### Why choose Contractor-grade A-Shape LED Lamps?

- Up to 90% energy savings compared to incandescent lamps<sup>1</sup>
- Average life rating of up to 15,000 hours<sup>2</sup>
- Selection of lamps suitable for enclosed fixtures
- No mercury allowing for non hazardous waste disposal
- Select lamps Title 20 qualified for California applications



### Contractor-grade A-Shape LED lamps

Catalog Number	Model Number	UPC Code	Product Description	Watts (W)	Base	CRI (min)	CCT (K)	Lifespan (hrs)	Lumens (lm)	Volts (V)	Energy Star	C/P Qty	Dist. Center
<b>A19 40W lamp equivalent non-dimming (plastic)</b>													
565085	929003004504	46677565084	5A19/LED/927/FR/P/ND 4/1FB	5	E26	90	2700	11000	450	120	Not ES	4/2520	TN
571588	929003019904	46677571580	5A19/LED/927/P/E26/ND 6/1FB T20	5	E26	90	2700	11000	450	120	Not ES	6/2430	CA
565093	929003004604	46677565091	5A19/LED/930/FR/P/ND 4/1FB	5	E26	90	3000	11000	450	120	Not ES	4/2520	PA
571596	929003020004	46677571597	5A19/LED/930/P/E26/ND 6/1FB T20	5	E26	90	3000	11000	450	120	Not ES	6/2430	CA
565100	929003004704	46677565107	5A19/LED/950/FR/P/ND 4/1FB	5	E26	90	5000	11000	450	120	Not ES	4/2520	PA
571604	929003020104	46677571603	5A19/LED/950/P/E26/ND/T20 6/1FB	5	E26	90	5000	11000	450	120	Not ES	6/2430	CA, TN, PA
<b>A19 60W lamp equivalent dimming (plastic)</b>													
581751	929003579504	46677581756	8A19/CNG/827/FR/P/E26/D 4/4CT	8	E26	80	2700	15000	800	120	Not ES	4/864	TN, PA
581769	929003584804	46677581763	8A19/CNG/830/FR/P/E26/D 4/4CT	8	E26	80	3000	15000	800	120	Not ES	4/864	TN, PA
581777	929003584904	46677581770	8A19/CNG/840/FR/P/E26/D 4/4CT	8	E26	80	4000	15000	800	120	Not ES	4/864	TN, PA
581785	929003579604	46677581787	8A19/CNG/850/FR/P/E26/D 4/4CT	8	E26	80	5000	15000	800	120	Not ES	4/864	TN, PA
<b>A19 60W lamp equivalent non-dimming (plastic)</b>													
571612	929003020204	46677571610	8.8A19/LED/927/P/E26/ND/T20 6/1FB	8.8	E26	90	2700	11000	800	120	Not ES	6/2430	CA, TN, PA
565119	929003004804	46677565114	8.5A19/LED/927/FR/P/ND 4/1FB	8.5	E26	90	2700	11000	800	120	Not ES	4/2520	TN, PA
571620	929003020304	46677571627	8.8A19/LED/930/P/E26/ND 6/1FB T20	8.8	E26	90	3000	11000	800	120	Not ES	6/2430	CA
565127	929003004904	46677565121	8.5A19/LED/930/FR/P/ND 4/1FB	8.5	E26	90	3000	11000	800	120	Not ES	4/2520	PA
571638	929003020404	46677571634	8.8A19/LED/950/P/E26/ND/T20 6/1FB	8.8	E26	90	5000	11000	800	120	Not ES	6/2430	CA, TN, PA
565135	929003005004	46677565138	8.5A19/LED/950/FR/P/ND 4/1FB	8.5	E26	90	5000	11000	800	120	Not ES	4/2520	PA

1. Light output comparison based upon the ENERGY STAR® Integral LED Lamp Center Beam Intensity Benchmark tool which can be found at EnergyStar.gov/LEDbulbs.  
 2. Tested to B50 L70 requirement. LED lifetime means the length of time (in hours) until half of the LED light sources maintain at least 70% of their initial lumen output (B50, L70).





(continued)



## Why choose Contractor-grade A-Shape LED Lamps?

- Up to 90% energy savings compared to incandescent lamps<sup>1</sup>
- Average life rating of up to 15,000 hours<sup>2</sup>
- Selection of lamps suitable for enclosed fixtures
- No mercury allowing for non hazardous waste disposal
- Select lamps Title 20 qualified for California applications

### Contractor-grade A-Shape LED lamps

Catalog Number	Model Number	UPC Code	Product Description	Watts (W)	Base	CRI (min)	CCT (K)	Lifespan (hrs)	Lumens (lm)	Volts (V)	Energy Star	C/P Qty	Dist. Center
A19/ A21 75W lamp equivalent non-dimming (plastic)													
565143	929003005104	46677565145	10A19/LED/927/FR/P/ND 4/1FB	10	E26	90	2700	11000	1000	120	Not ES	4/2520	CA, TN, PA
565150	929003005204	46677565152	10A19/LED/930/FR/P/ND 4/1FB	10	E26	90	3000	11000	1000	120	Not ES	4/2520	PA
565168	929003005304	46677565169	10A19/LED/950/FR/P/ND 4/1FB	10	E26	90	5000	11000	1000	120	Not ES	4/2520	CA, TN, PA
571646	929003020504	46677571641	12.2A19/LED/927/P/E26/ND/T20 6/1FB	12.2	E26	90	2700	11000	1100	120	Not ES	6/2430	CA, TN, PA
571653	929003020604	46677571658	12.2A19/LED/930/P/E26/ND 6/1FB T20	12.2	E26	90	3000	11000	1100	120	Not ES	6/2430	CA
571661	929003020704	46677571665	12.2A19/LED/950/P/E26/ND/T20 6/1FB	12.2	E26	90	5000	11000	1100	120	Not ES	6/2430	CA, PA
A19/ A21 100W equivalent lamps dimming (plastic)													
581801	929003585004	46677581800	14A19/CNG/827/FR/P/E26/D 4/4CT	14	E26	80	2700	15000	1600	120	Not ES	4/864	TN, PA
581827	929003585104	46677581824	14A19/CNG/830/FR/P/E26/D 4/4CT	14	E26	80	3000	15000	1600	120	Not ES	4/864	TN, PA
581835	929003585204	46677581831	14A19/CNG/840/FR/P/E26/D 4/4CT	14	E26	80	4000	15000	1600	120	Not ES	4/864	TN, PA
581868	929003585304	46677581862	14A19/CNG/850/FR/P/E26/D 4/4CT	14	E26	80	5000	15000	1600	120	Not ES	4/864	TN, PA
A19/A21 100W lamp equivalent non-dimming (plastic)													
565176	929003005404	46677565176	13.5A19/LED/927/FR/P/ND 4/1FB	13.5	E26	90	2700	11000	1500	120	Not ES	4/2268	CA, TN, PA
565184	929003005504	46677565183	13.5A19/LED/930/FR/P/ND 4/1FB	13.5	E26	90	3000	11000	1500	120	Not ES	4/2268	PA
565192	929003005604	46677565190	13.5A19/LED/950/FR/P/ND 4/1FB	13.5	E26	90	5000	11000	1500	120	Not ES	4/2268	CA, TN, PA
571679	929003020804	46677571672	16.6A19/LED/927/FR/P/E26/ND/T20 6/1FB	16.6	E26	90	2700	11000	1500	120	Not ES	6/2430	CA, TN, PA
571687	929003020904	46677571689	16.6A19/LED/930/FR/P/E26/ND/T20 6/1FB	16.6	E26	90	3000	11000	1500	120	Not ES	6/2430	CA, TN, PA
571695	929003021004	46677571696	16.6A19/LED/950/P/E26/ND 6/1FB T20	16.6	E26	90	5000	11000	1500	120	Not ES	6/2430	CA, TN, PA
554485	929002227704	46677554484	16.6A21/LED/950/P/E26/ND 6/1FB T20	16.6	E26	90	5000	11000	1500	120	Not ES	6/1260	CA, TN, PA

1. Light output comparison based upon the ENERGY STAR® Integral LED Lamp Center Beam Intensity Benchmark tool which can be found at EnergyStar.gov/LEDbulbs.  
 2. Tested to B50 L70 requirement. LED lifetime means the length of time (in hours) until half of the LED light sources maintain at least 70% of their initial lumen output (B50, L70).



# PHILIPS

LED Bulbs

Reflectors



Smooth dimming  
down to 10%

## Why choose Reflector LED Lamps?

- Average life rating of 15,000 hours<sup>1</sup>
- Suitable for enclosed fixtures
- Dimmable reflectors are Title 20 qualified for California applications
- No mercury allowing for non-hazardous waste disposal



## Reflector LED plastic lamps

Catalog Number	Model Number	UPC Code	Product Description	Watts (W)	Base	CRI (min)	CCT (K)	Lifespan (hrs)	Lumens (lm)	Volts (V)	Energy Star	C/P Qty	Dist. Center
<b>R20 45W equivalent lamps dimming</b>													
456979	929002008904	46677456979	5R20/PER/927-22/P/E26/WG 6/1FB T20	5	E26	90	2700 WG	15000	450	120	2339796	6/2340	CA, TN, PA
553883	929002092204	46677553883	5R20/PER/927/P/E26/DIM 6/1FB T20	5	E26	90	2700	15000	450	120	2346612	6/2340	CA, TN, PA
547406	929002035304	46677547400	5R20/PER/930/P/E26/DIM 6/1FB T20	5	E26	90	3000	15000	450	120	2340145	6/2340	CA, TN, PA
547414	929002035404	46677547417	5R20/PER/940/P/E26/DIM 6/1FB T20	5	E26	90	4000	15000	450	120	2340144	6/2340	CA, TN, PA
<b>BR30 65W equivalent lamps dimming</b>													
457044	929001870334	46677457044	7.2BR30/PER/922-27/P/E26/WG 6/1FB T20	7.2	E26	90	2700 WG	15000	650	120	2339801	6/960	CA, TN, PA
553891	929002092304	46677553890	7.2BR30/PER/927/P/E26/DIM 6/1FB T20	7.2	E26	90	2700	15000	650	120	2346614	6/960	CA, TN, PA
545905	929002032104	46677545901	7.2BR30/PER/930/P/E26/DIM 6/1FB T20	7.2	E26	90	3000	15000	650	120	2346618	6/960	CA, TN, PA
545913	929002032204	46677545918	7.2BR30/PER/940/P/E26/DIM 6/1FB T20	7.2	E26	90	4000	15000	650	120	2346615	6/960	CA, TN, PA
548107	929002204163	46677548100	7.2BR30/PER/950/P/E26/DIM 6/1FB T20	7.2	E26	90	5000	15000	650	120	2340153	6/960	CA, TN, PA
583583	929003619804	46677583583	8.8BR30/CNG/827/FR/P/E26/DIM/120V 6/1CT	8.8	E26	80	2700	15000	650	120	–	6/840	CA, TN, PA
583591	929003619904	46677583590	8.8BR30/CNG/830/FR/P/E26/DIM/120V 6/1CT	8.8	E26	80	3000	15000	650	120	–	6/840	CA, TN, PA
583609	929003620004	46677583606	8.8BR30/CNG/840/FR/P/E26/DIM/120V 6/1CT	8.8	E26	80	4000	15000	650	120	–	6/840	CA, TN, PA
583617	929003620104	46677583613	8.8BR30/CNG/850/FR/P/E26/DIM/120V 6/1CT	8.8	E26	80	5000	15000	650	120	–	6/840	CA, TN, PA
<b>BR30 65W equivalent lamps non-dimming</b>													
576561	929001947993	46677576561	9BR30/LED/827/FR/P/ND 4/3CT	9	E26	80	2700	11000	650	120	Not ES	4/360	TN, PA

1. Tested to B50 L70 requirement. LED lifetime means the length of time (in hours) until half of the LED light sources maintain at least 70% of their initial lumen output (B50, L70).





(continued)



### Why choose Reflector LED Lamps?

- Average life rating of 15,000 hours<sup>1</sup>
- Suitable for enclosed fixtures
- Dimmable reflectors are Title 20 qualified for California applications
- No mercury allowing for non-hazardous waste disposal

### Reflector LED plastic lamps

Catalog Number	Model Number	UPC Code	Product Description	Watts (W)	Base	CRI (min)	CCT (K)	Lifespan (hrs)	Lumens (lm)	Volts (V)	Energy Star	C/P Qty	Dist. Center
<b>BR40 65W equivalent lamps dimming</b>													
547422	929002035504	46677547424	8.8BR40/PER/930/P/E26/DIM 6/1FB T20	8.8	E26	90	3000	15000	800	120	2340150	6/432	CA, TN, PA
547430	929002035604	46677547431	8.8BR40/PER/940/P/E26/DIM 6/1FB T20	8.8	E26	90	4000	15000	800	120	2340149	6/432	CA, TN, PA
548115	929002204263	46677548117	8.8BR40/PER/950/P/E26/DIM 6/1FB T20	8.8	E26	90	5000	15000	800	120	2340148	6/432	CA, TN, PA
<b>BR40 85W equivalent lamps dimming</b>													
577841	929003477104	46677577841	13.3BR40/PER/927-22/P/E26/WG 6/1CT T20	13.3	E26	90	2700 WG	15,000	1204	120	2400612	6/432	CA, TN, PA
577858	929003477204	46677577858	13.3BR40/PER/927/P/E26/DIM 6/1CT T20	13.3	E26	90	2700	15,000	1204	120	2400614	6/432	TN
577866	929003477304	46677577865	13.3BR40/PER/930/P/E26/DIM 6/1CT T2	13.3	E26	90	3000	15,000	1204	120	2400615	6/432	TN
577874	929003477404	46677577872	13.3BR40/PER/940/P/E26/DIM 6/1CT T20	13.3	E26	90	4000	15,000	1204	120	2400616	6/432	TN
577882	929003477504	46677577889	13.3BR40/PER/950/P/E26/DIM 6/1CT T20	13.3	E26	90	5000	15,000	1204	120	2400617	6/432	CA, TN, PA
<b>BR30 100W equivalent lamps dimming</b>													
571471	929002351433	46677571474	15BR30/PER/927/P/E26/WG/HO/T20 4/1PF	15	E26	90	2700 WG	15000	1400	120	2391702	4/528	CA, TN
571463	929002351333	46677571467	15BR30/PER/950/P/E26/D/HO/T20 4/1PF	15	E26	90	5000	15000	1400	120	2391701	4/528	CA, TN
<b>BR40 150W equivalent lamps dimming</b>													
558049	929002351203	46677558048	20BR40/PER/927-22/E26/WG/HO 4/1FB T20	20	E26	90	2700 WG	15,000	2175	120	2360988	4/384	CA, TN, PA

1. Tested to B50 L70 requirement. LED lifetime means the length of time (in hours) until half of the LED light sources maintain at least 70% of their initial lumen output (B50, L70).

# PHILIPS

## LED Bulbs

### Decorative A15 & S14

Excellent color consistency and high color rendering



### Why choose Decorative A15 & S14 LED Lamps?

- Up to 80% energy savings compared to standard incandescent lamps
- Average life rating of 15,000 hours<sup>1</sup>
- Certain models dim to a warm glow similar to incandescent lamps
- Wet location rated for indoor and outdoor use
- Selection of candelabra and medium based lamps
- Title 20 qualified for California applications



### Decorative A15 & S14 LED glass lamps

Catalog Number	Model Number	UPC Code	Product Description	Watts (W)	Base	CRI (min)	CCT (K)	Lifespan (hrs)	Lumens (lm)	Volts (V)	Energy Star	C/P Qty	Dist. Center
<b>A15 25W equivalent lamps dimming</b>													
565655	929002987203	46677565657	3.5A15/VIN/820/E26/Amber/G/SP D 4/1PFT20	3.5	E26	80	2000	15000	225	120	No Category	4/1908	CA, TN, PA
556555	929002260203	46677556556	3.3A15/VIN/820/E26/CL/GL/DIM 4/1BC T20	3.3	E26	80	2000	15000	200	120	Not ES	4/2720	CA, TN, PA
<b>A15 40W equivalent lamps dimming</b>													
549386	929002208304	46677549381	3.8A15/PER/927-922/CL/G/E26/WGX1FB T20	3.8	E26	90	2700 WG	15000	350	120	Not ES	10/3500	TN
548305	929002209004	46677548308	5A15/PER/950/CL/G/E26/DIM 1FB T20	5	E26	90	5000	15000	450	120	2340650	10/3500	TN
<b>A15 60W equivalent lamps dimming</b>													
549402	929002208604	46677549404	5.5A15/PER/927-922/CL/G/E26/WGX1FB	5.5	E26	90	2700 WG	15000	500	120	Not ES	10/3500	CA, TN, PA
564450	929002986803	46677564452	5A15/PER/UD/CL/G/E12/WGD 6/2PF T20	5	E12	95	2700 WG	15000	450	120	2397123	6/1440	TN
549394	929002208404	46677549398	5.5A15/PER/927-922/CL/G/E12/WGX1FB	5.5	E12	90	2700 WG	15000	500	120	Not ES	10/3500	TN
573402	929003084503	46677573409	6.6A15/PER/UD50/CL/G/E26/DIM2PF T20	6.5	E26	95	5000	15000	750	120	Not ES	6/1440	TN
<b>S14 10W equivalent lamps non-dimming</b>													
575209	929003082704	46677575205	1S14/VIN/827/CL/G/E26/ND 1CT	1	E26	80	2700	15000	60	110-130	Not ES	10/3500	CA

1. Tested to B50 L70 requirement. LED lifetime means the length of time (in hours) until half of the LED light sources maintain at least 70% of their initial lumen output (B50, L70).







Vintage and clear colors for multiple room aesthetics



### Why choose MasterClass Designer LED Lamps?

- Increased energy savings when compared to standard incandescent lamps
- Average life rating of 15,000 hours<sup>1</sup>
- Smooth dimming down to 10%
- Certain models dim to a warm glow similar to incandescent lamps
- Wet location rated models can be used inside or outside
- Title 20 qualified for California applications

### MasterClass Designer LED glass lamps

Catalog Number	Model Number	UPC Code	Product Description	Watts (W)	Base	CRI (min)	CCT (K)	Lifespan (hrs)	Lumens (lm)	Volts (V)	Energy Star	C/P Qty	Dist. Center
<b>ST19</b>													
565838	929002989003	46677565831	5.5ST19/VIN/927/E26/CL/G/SP D 1PF T20	5.5	E26	90	2700	15000	500	120	2394006	4/1032	CA, TN, PA
565812	929002988803	46677565817	5.5ST19/VIN/950/E26/CL/G/SP D 4/1PF T20	5.5	E26	90	5000	15000	500	120	2394008	4/1032	CA, TN, PA
565622	929002986903	46677565626	6.5ST19/VIN/820/E26/Amber/G/SP/D 1PFT20	6.5	E26	80	2000	15000	400	120	No Category	4/1032	CA, TN, PA
<b>T10</b>													
565671	929002987403	46677565671	4.5T10/VIN/820/E26/CL/GL/DIM 4/FBH T20	4.5	E26	80	2000	15000	225	120	No Category	4/2232	TN
<b>T20</b>													
575241	929001936513	46677575243	7.5T20/VIN/820/Amber/G/E26/SP/DIM 2/1CT	7.5	E26	80	2000	15000	400	120	No Category	2/168	CA, TN, PA
<b>A50</b>													
575233	929001936413	46677575236	7.5A50/VIN/820/CL/G/E26/amber/SP/DIM 2/1CT	7.5	E26	80	2000	15000	400	120	No Category	2/78	CA, TN, PA
<b>G63</b>													
575225	929001936313	46677575229	7.5G63/VIN/820/Amber/G/E26/SP/DIM 2/1CT	7.5	E26	80	2000	15000	400	120	No Category	2/48	CA, TN, PA

1. Tested to B50 L70 requirement. LED lifetime means the length of time (in hours) until half of the LED light sources maintain at least 70% of their initial lumen output (B50, L70).



Excellent color consistency and high color rendering



## Why choose Globe LED Lamps?

- Up to 80% energy savings compared to standard incandescent lamps
- Average life rating of 15,000 hours<sup>1</sup>
- Smooth dimming down to 10%
- Certain models dim to a warm glow similar to incandescent lamps
- Wet location rated models can be used inside or outside
- Title 20 qualified for California applications



## Globes G16.5 LED glass lamps

Catalog Number	Model Number	UPC Code	Product Description	Watts (W)	Base	CRI (min)	CCT (K)	Lifespan (hrs)	Lumens (lm)	Volts (V)	Energy Star	C/P Qty	Dist. Center
<b>G16.5 25W equivalent lamps dimming</b>													
549253	929002204804	46677549251	2.7G16.5/PER/927-922/CL/G/E26/WGX 1FBT20	2.7	E26	90	2700 WG	15000	250	120	2357745	10/3500	TN
549261	929002204904	46677549268	2.7G16.5/PER/927-922/CL/G/E12/WGX 1FBT20	2.7	E12	90	2700 WG	15000	250	120	2357743	10/3500	TN
537597	929001951353	46677537593	4.5G16.5/VIN/820/E12/CL/GL/DIM 4/BC T20	4.5	E12	80	2200	15000	300	120	Not ES	4/720	CA, TN, PA
<b>G16.5 40W equivalent lamps dimming</b>													
549279	929002205004	46677549275	3.8G16.5/PER/927-922/CL/G/E26/WGX 1FBT20	3.8	E26	90	2700 WG	15000	350	120	2357750	10/3500	TN
573295	929003085103	46677573294	3.5G16.5/PER/UD/CL/G/E26/WGD 6/2PF	3.5	E26	95	2700 WG	15000	350	120	2395480	6/1200	TN
549287	929002205104	46677549282	3.8G16.5/PER/927-922/CL/G/E12/WGX 1FBT20	3.8	E12	90	2700 WG	15000	350	120	2357749	10/3500	TN
573303	929003085203	46677573300	3.5G16.5/PER/UD/CL/G/E12/WGD6/2PFT20	3.5	E12	95	2700 WG	15000	350	120	2395481	6/1200	TN
564591	929002205423	46677564599	3.8G16.5PER927-922FRGE26WGX2PFT20	3.8	E26	90	2700 WG	15000	350	120	2389060	6/1200	TN
<b>G16.5 60W equivalent lamps dimming</b>													
573329	929003085403	46677573324	5G16.5/PE/UD/CL/G/E12WGD 6/2PFT20	5	E12	95	2700 WG	15000	500	120	2395482	6/1200	TN
549295	929002205204	46677549299	5.5G16.5/PER/927-922/CL/G/E26/WGX 1FBT20	5.5	E26	90	2700 WG	15000	500	120	2357754	10/3500	CA, TN, PA

1. Tested to B50 L70 requirement. LED lifetime means the length of time (in hours) until half of the LED light sources maintain at least 70% of their initial lumen output (B50, L70).



Excellent color consistency and high color rendering



### Why choose Globe LED Lamps?

- Up to 80% energy savings compared to standard incandescent lamps
- Average life rating of 15,000 hours<sup>1</sup>
- Smooth dimming down to 10%
- Certain models dim to a warm glow similar to incandescent lamps
- Wet location rated models can be used inside or outside
- Title 20 qualified for California applications

### Globes G25 LED glass lamps

Catalog Number	Model Number	UPC Code	Product Description	Watts (W)	Base	CRI (min)	CCT (K)	Lifespan (hrs)	Lumens (lm)	Volts (V)	Energy Star	C/P Qty	Dist. Center
<b>G25 40W equivalent lamps dimming</b>													
573345	929003084803	46677549503	3.5G25/PER/UD/CL/G/E26/WGD 4/2FP T20	3.5	E26	95	2700 WG	15000	350	120	2395542	4/336	TN
573352	929003085003	46677573355	3.5G25/PER/UD/FR/G/E26/WGD 4/2PF T20	3.5	E26	95	2700 WG	15000	350	120	2395820	4/336	TN
573337	929003084903	46677573331	3.5G25/PER/UD50/CL/G/E26/D 4/2PFT20	3.5	E26	90	5000	15000	350	120	2395768	4/336	TN
549204	929002206904	46677549206	3.8G25/PER/950/FR/G/E26/DIM 1FBT20	3.8	E26	90	5000	15000	350	120	2340698	10/800	TN
575217	929003099803	46677575212	3.5G25/PER/UD50/E26/FR/G/D 4/2PFT20	3.5	E26	90	5000	15000	350	120	2397563	4/336	TN
<b>G25 60W equivalent lamps dimming</b>													
549519	929001969804	46677549510	5.5G25/PER/927-922/CL/G/E26/WGXIFB T20	5.5	E26	90	2700 WG	15000	500	120	2340741	10/800	CA, TN, PA
549535	929001970004	46677549534	5.5G25/PER/927-922/FR/G/E26/WGXIFB T20	5.5	E26	90	2700 WG	15000	500	120	2340740	10/800	TN
549212	929002207004	46677549213	5.5G25/PER/950/FR/G/E26/DIM 1FBT20	5.5	E26	90	5000	15000	500	120	2340702	10/800	TN
565887	929002989503	46677565886	5.5G25/PER/950/FR/G/E26/DIM 1FBT20	5.5	E26	80	2000	15000	400	120	Not ES	4/432	TN
564914	929002991403	46677564919	5G25/PER/UD50/CL/G/E26/D 4/2PFT20	5.5	E26	90	5000	15000	500	120	2397122	4/336	TN

1. Tested to B50 L70 requirement. LED lifetime means the length of time (in hours) until half of the LED light sources maintain at least 70% of their initial lumen output (B50, L70).



## LED Bulbs

### Candles B11/BA11 & F15



Increased energy savings compared to standard incandescent lamps

## Why choose Candle LED Lamps?

- Selection of clear and vintage, angled and blunt tip lamps for various aesthetic applications
- Average life rating of 15,000 hours<sup>1</sup>
- Smooth dimming down to 10%
- Certain models dim to a warm glow similar to incandescent lamps
- Excellent color consistency and high color rendering



## Candles B11/BA11 & F15 LED glass lamps

Catalog Number	Model Number	UPC Code	Product Description	Watts (W)	Base	CRI (min)	CCT (K)	Lifespan (hrs)	Lumens (lm)	Volts (V)	Energy Star	C/P Qty	Dist. Center
<b>B11/BA11 Candles 25W equivalent lamps dimming</b>													
566653	929002991803	46677566654	2.3BA11/PER/UD/CL/G/E12/WGD 6/3PFT20	2.3	E26	95	2700 WG	15000	185	120	2395501	6/1179	TN
<b>B11/BA11 Candles 40W equivalent lamps dimming</b>													
549568	929001969404	46677549565	3.3B11/PER/927-922/CL/G/E12/WGX 1FB T20	3.3	E12	90	2700 WG	15000	300	120	2340633	10/4320	TN
549584	929002047204	46677549589	3.3B11/PER/927-922/CL/G/E26/WGX1FB T20	3.3	E26	90	2700 WG	15000	300	120	2340631	10/4320	TN
574392	929003089903	4667754390	3.5B11/PER/UD/CL/G/E26/WGD 6/3PF T20	3.5	E26	95	2700 WG	15000	300	120	2395770	6/1176	CA, TN, PA
549543	929001969204	46677549541	3.3BA11/PER/927-922/CL/G/E12/WGX 1FB T20	3.3	E12	90	2700 WG	15000	300	120	2340636	10/4000	TN
566661	929002990703	46677566661	3.5BA11/PER/UD/CL/G/E12/WGD 6/3PF T20	3.5	E12	95	2700 WG	15000	300	120	2393782	6/1176	TN
566679	929002991703	46677566678	3.5BA11/PER/UD/CL/G/E26/WGD 6/3PF T20	3.5	E26	95	2700 WG	15000	300	120	2395769	6/1176	TN
564948	929002991903	46677564940	3.5BA11/PER/UD50/CL/G/E26/D 6/3PF T20	3.5	E26	95	5000	15000	300	120	2396729	6/1176	PA
549154	929002206004	46677549152	3.3B11/PER/950/CL/G/E26/DIM 1FBT20	3.3	E26	90	5000	15000	300	120	2340685	10/4320	TN
564930	929002991603	46677564933	3.5BA11/PER/UD50/CL/G/E12/D 6/3PF T20	3.5	E12	95	5000	15000	300	120	2395540	6/1176	TN
549121	929002205704	46677549121	3.3BA11/PER/950/CL/G/E12/DIM 1FB T20	3.3	E12	90	5000	15000	300	120	2340657	10/4000	PA
565804	929002988703	46677565800	3.5B11/VIN/B20/E12/Amber/G/SP D 4/2PF T20	3.5	E12	80	2000	15000	225	120	No Category	4/1344	CA, TN, PA

1. Tested to B50 L70 requirement. LED lifetime means the length of time (in hours) until half of the LED light sources maintain at least 70% of their initial lumen output (B50, L70).



(continued)



## Why choose Candle LED Lamps?

- Selection of clear and vintage, angled and blunt tip lamps for various aesthetic applications
- Average life rating of 15,000 hours<sup>1</sup>
- Smooth dimming down to 10%
- Certain models dim to a warm glow similar to incandescent lamps
- Excellent color consistency and high color rendering

### Candles B11/BA11 & F15 LED glass lamps

Catalog Number	Model Number	UPC Code	Product Description	Watts (W)	Base	CRI (min)	CCT (K)	Lifespan (hrs)	Lumens (lm)	Volts (V)	Energy Star	C/P Qty	Dist. Center
<b>B11/BA11 Candles 60W equivalent lamps dimming</b>													
575183	929003082404	46677575182	5BA11/PER/CRI95WG/FR/G/E26/WGD 1CT	5	E26	95	2700 WG	15000	500	120	2398684	10/4000	CA
575175	929003094904	46677575175	5B11/PER/CRI95WG/FR/G/E26/WGD 1CT	5	E26	95	2700 WG	15000	500	120	2398685	10/4320	CA
575167	929002990804	46677575168	5BA11/PER/CRI95WG/FR/G/E12/WGD 1CT	5	E26	95	2700 WG	15000	500	120	2392873	10/4000	CA
575191	929003082504	46677575199	5B11/PER/CRI95WG/FR/G/E12/WGD 1CT	5	E26	95	2700 WG	15000	500	120	2392871	10/4320	CA
549337	929002204504	46677549336	5.5B11/PER/927-922/CL/G/E12/WGX 1FB T20	5.5	E12	90	2700 WG	15000	500	120	2340744	10/4320	CA, TN, PA
566695	929002991103	46677566692	5BA11/PER/UD/CL/G/E26/WGD 6/3PF T20	5	E26	95	2700 WG	15000	500	120	2395499	6/1176	TN
566687	929002991003	46677566685	5BA11/PER/UD/CL/G/E12/WGD 6/3PF T20	5	E26	95	2700 WG	15000	500	120	2392874	6/1176	PA
573378	929003085503	46677573379	5B11/PER/UD/CL/G/E26/WGD 6/3PF T20	5	E26	95	2700 WG	15000	500	120	2395500	6/1176	TN
564922	929002991503	46677564926	5BA11/PER/UD50/CL/G/E26/D 6/3PF T20	5	E26	95	5000	15000	500	120	2395504	6/1176	TN
<b>F15 Candle 60W equivalent lamp dimming</b>													
572669	929002091593	46677572662	5.5F15/PER/927-922/CL/G/E26/WGX 1PF T20	5.5	E26	90	2700 WG	15000	500	120	2340743	6/1764	CA, TN, PA
<b>B11/BA11 Candles 75W equivalent lamps dimming</b>													
564492	929002986603	46677564490	6.6/BA11/PER/UD/CL/G/E12+E26/WGD 3PF T20	6.6	E12 / E26	95	2700 WG	15000	600	120	Not ES	6/1176	CA, TN, PA
564500	929002986703	46677564506	5.5BA11/PER/UD50/CL/G/E12+E26/D 3PF T20	5.5	E12 / E26	95	5000	15000	700	120	Not ES	6/1176	CA, TN, PA

1. Tested to B50 L70 requirement. LED lifetime means the length of time (in hours) until half of the LED light sources maintain at least 70% of their initial lumen output (B50, L70).

# PHILIPS

## LED Bulbs

### UFO



Less glare through  
increased surface space

### Why choose UFO LED Lamps?

- Highly efficient, modern aesthetic lamp and fixture in one
- Average life rating of 15,000 hours<sup>1</sup>
- Lowers maintenance costs by reducing relamp frequency
- Contains no mercury
- Rugged plastic design



### UFO LED plastic lamps

Catalog Number	Model Number	UPC Code	Product Description	Watts (W)	Base	CRI (min)	CCT (K)	Lifespan (hrs)	Lumens (lm)	Volts (V)	Energy Star	C/P Qty	Dist. Center
<b>UFO 75W equivalent lamps</b>													
576990	929002010553	46677576998	16UFO/PER/830/FR/P/E26/ND 4/1PF	16	E26	80	3000	15000	1150	110-240	No Category	4/560	TN
<b>UFO 125W equivalent lamps</b>													
577007	929002010753	46677577001	26UFO/PER/830/FR/P/E26/ND 4/1PF P/C	26	E26	80	3000	15000	1950	110-240	No Category	4/280	TN

1. Tested to B50 L70 requirement. LED lifetime means the length of time (in hours) until half of the LED light sources maintain at least 70% of their initial lumen output (B50, L70).



Unique designs provide form factors to fit standard applications



## Why choose MasterClass Specialty LED Lamps?

- Huge energy savings when compared to halogen and incandescent lamps
- Average life rating of 15,000 hours<sup>1</sup>
- Suitable for damp applications
- Lamps in this portfolio fit a variety of applications from task lighting in hotel and restaurants, landscape lighting and are ideal for decorative and ambient applications and more

### MasterClass Specialty LED plastic lamps

Catalog Number	Model Number	UPC Code	Product Description	Watts (W)	Base	CRI (min)	CCT (K)	Lifespan (hrs)	Lumens (lm)	Volts (V)	Energy Star	C/P Qty	Dist. Center
MasterClass non-dimming lamps													
567180	929001844023	46677567187	1T3/G4/830/ND/12V 6/1PF	1	G4	80	3000	15000	100	12	No Category	6/2604	CA, TN, PA
567198	929001844223	46677567194	2T3/G4/830/ND 12V 6/1PF	2	G4	80	3000	15000	200	12	No Category	6/2604	CA, TN, PA
477240	929001844425	46677477240	2T3/PER/830/ND/GY6.35/12V 6/1BC	2	GY6.35	80	3000	15000	200	12	No Category	6/2142	CA, TN, PA
533455	929002389596	46677475543	1.2T5/SPC/830/ND/12V/Wedge/BC/2PK 6/2	1.2	Wedgbase	80	3000	15000	120	12	No Category	6/2400	CA, TN, PA
475418	929002389636	46677475413	2T5/LED/830/ND/Wedge/12V/BC/2PK 6/2	2	Wedgbase	80	3000	15000	120	12	No Category	6/2400	TN
534263	929001840835	46677534264	3.6T3/PER/830/ND/G9/120V 6/3BC	3.6	G9	80	3000	15000	370	120	No Category	6/1932	PA
462977	929001224603	46677462970	BC0.5C7/LED/827/E12/ND 120V 2pk	0.5	E12	80	2700	15000	30	120	No Category	6/1974	TN
574038	929001224613	46677574031	0.5C7/LEDnight light/E12/MilkyND120V 2PF	0.5	E12	80	2700	15000	30	120	No Category	6/1974	TN

1. Tested to B50 L70 requirement. LED lifetime means the length of time (in hours) until half of the LED light sources maintain at least 70% of their initial lumen output (B50, L70).



© 2022 Signify Holding. All rights reserved. The information provided herein is subject to change, without notice. Signify does not give any representation or warranty as to the accuracy or completeness of the information included herein and shall not be liable for any action in reliance thereon. The information presented in this document is not intended as any commercial offer and does not form part of any quotation or contract, unless otherwise agreed by Signify.

Signify North America Corporation  
400 Crossing Blvd, Suite 600  
Bridgewater, NJ 08807  
Telephone: 855-486-2216

Signify Canada Ltd.  
281 Hillmount Road,  
Markham, ON, Canada L6C 2S3  
Telephone: 800-668-9008

All trademarks are owned by Signify Holding or their respective owners.