



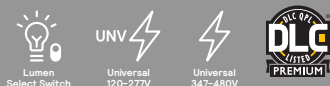
Day-Brite CFI

LED Value High Bay (FCY)

- Delivers up to 29,000 lumens with efficacies up to 129 LPW
- Field selectable colour (CCT) settings for 4000K or 5000K
- Available in universal 120-277V or 347V



NEW!



Keene

Area Light Gen. 2 (AL)

- Four field selectable lumen settings, providing up to 22,000 lumens
- Universal 120-277V and 347-480V



NEW!



Keene

Garage & Canopy DualSelect (GC)

- Field selectable lumen and colour (CCT) settings
- Colour settings: 3000K / 4000K / 5000K (CRI 80)
- Built in Motion sensor and daylight sensor (photocell)
- Universal 120-347V



NEW!



Lightolier

Commercial Retrofit Downlight DualSelect (CR)

- Field selectable lumen and colour (CCT) settings
- Aperture sizes: 4" / 6" / 8" / 10", up to 3,000 lumens
- Colour settings: 3000K / 3500K / 4000K (CRI 90)
- Universal 120-347V



NEW!



Keene

Wall Pack DualSelect (WP)

- Field selectable lumen and colour (CCT) settings
- Colour settings: 3000K / 4000K / 5000K (CRI 80)
- Integrated daylight sensor (photocell)
- Universal 120-347V



NEW!

Day-Brite
CFI
by @signify

LIGHTOLIER
by @signify

KEENE
by @signify

interact Pro

PHILIPS

ADVANCE
by @signify

For more information and setup sheets, please contact your Signify sales representative.

© 2021 Signify Holding. All rights reserved. The information provided herein is subject to change, without notice. Signify does not give any representation or warranty as to the accuracy or completeness of the information included herein and shall not be liable for any action in reliance thereon. The information presented in this document is not intended as any commercial offer and does not form part of any quotation or contract, unless otherwise agreed by Signify.



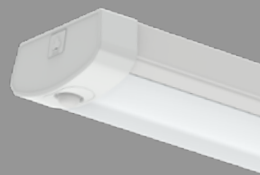
Day-Brite CFI

Selectable Backlit Panel (SBP)

- Simplify inventory management while maintaining numerous options for customers
- Field selectable lumen and colour (CCT) settings
- Universal 120-347V
- Available in three sizes: 1x4', 2x2', and 2x4'



NWL440L8CSTUNVDIM



Day-Brite CFI

NWL Wraparound LED

- Field selectable CCT
- Integrated occ sensor



New Generation

Day-Brite CFI

FluxPanel Gen 2 (FPZ)

- New DLC premium combinations



UN3



Day-Brite CFI

Round High Bay (HCY)

- 14,000 – 33,000 lumens
- Universal 120-347V
- NEMA 4X and IP65 Rated



PILA

Wraparound LED

- 4,000 lumens, 4000K, 120-277V

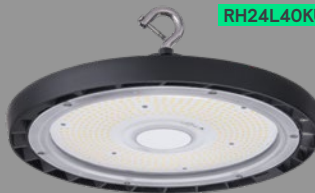


WP440L40KU

PILA

Round High Bay

- 24,000 lumens, 4000K, 120-277V
- IP65 Rated



RH24L40KU

PILA

Linear High Bay

- 24,000 lumens, 4000K, 120-277V



LH24L40KU

Philips

MasterClass MainsFit T8 LEDtube

- UL Type B ballast bypass solution
- Shatter proof polycarbonate construction
- Lifetime of up to 70,000 hours



Philips

CorePro FlexFit T8 LEDtube

- All-in-one UL Type A or Type B solution – adapts to either plug 'n play or ballast bypass installations
- Built-in surge suppression
- Lifetime of up to 50,000 hours



Day-Brite

CFI

by @signify

LIGHTOLIER
by @signify

KEENE
by @signify

interact Pro

PHILIPS

ADVANCE
by @signify

For more information and setup sheets, please contact your Signify sales representative.

© 2021 Signify Holding. All rights reserved. The information provided herein is subject to change, without notice. Signify does not give any representation or warranty as to the accuracy or completeness of the information included herein and shall not be liable for any action in reliance thereon. The information presented in this document is not intended as any commercial offer and does not form part of any quotation or contract, unless otherwise agreed by Signify.