



Trulifi 6002

6002.2 Access Point



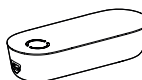
Transceiver



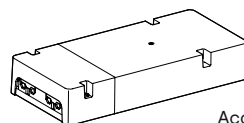
Transceiver RJ12 cable
(7 m, white)



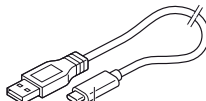
POF cable (10 m)



USB Key



Access Point



USB-C cable 0.45 m

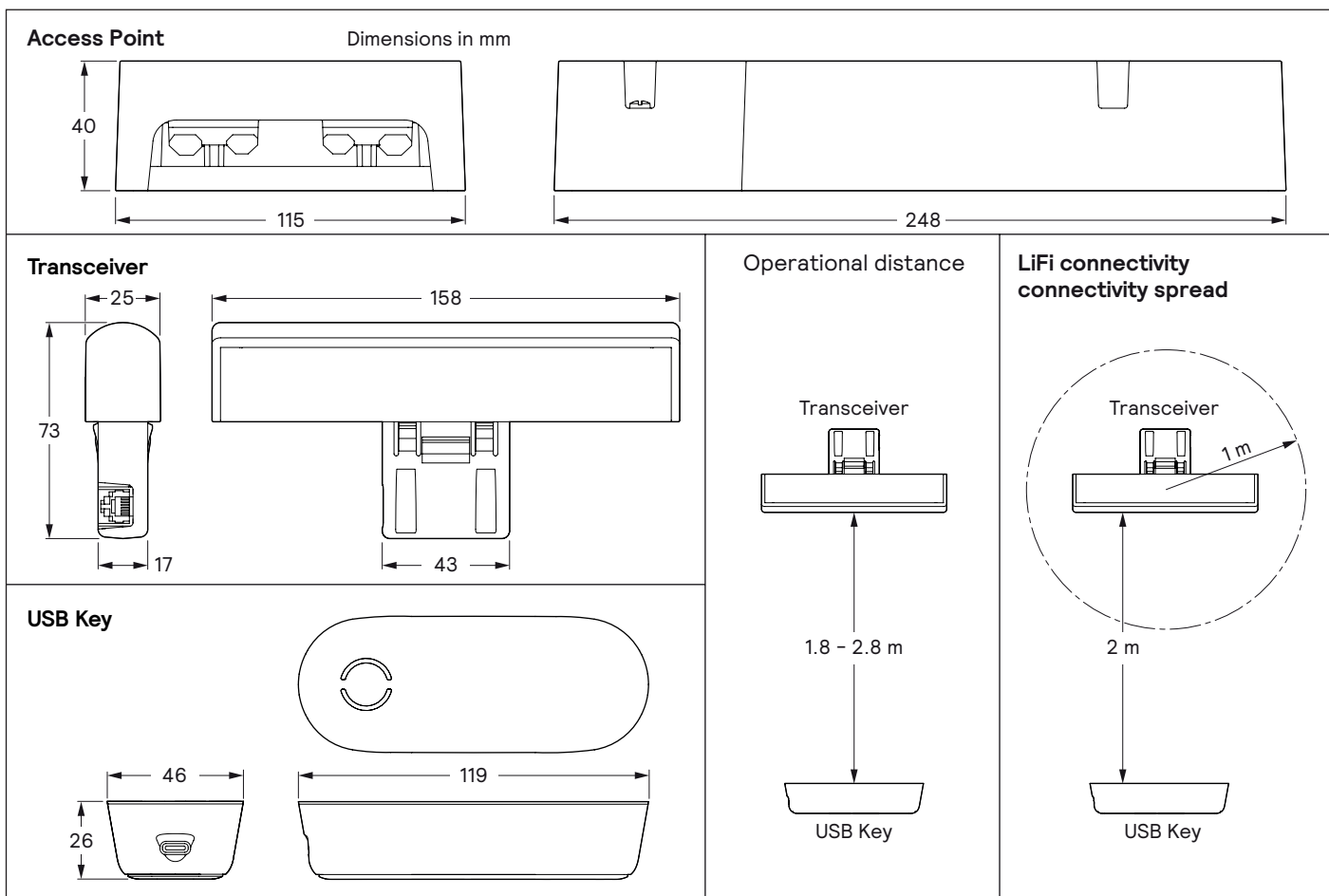


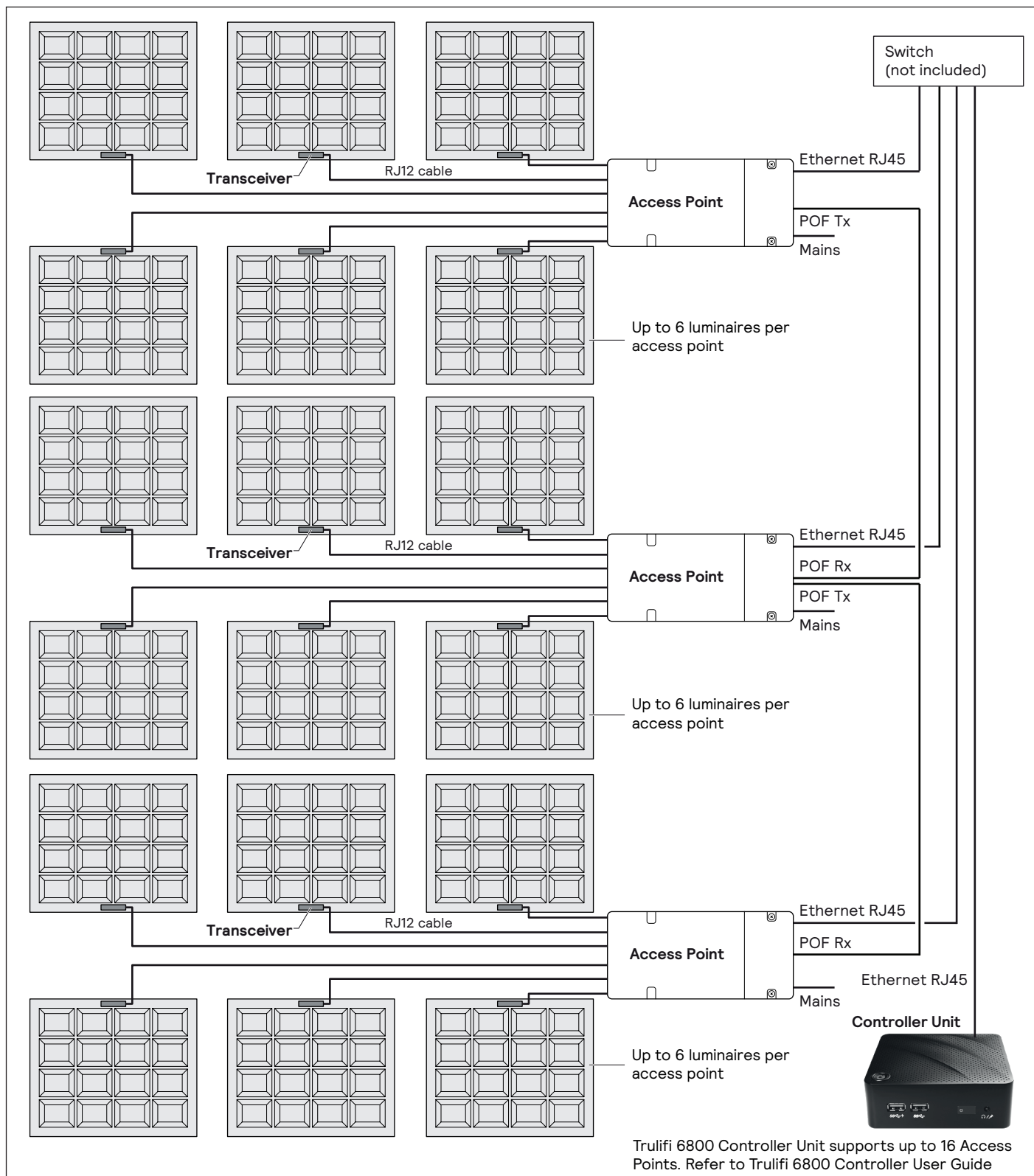
Trulifi 6800
Controller Unit
(optional)



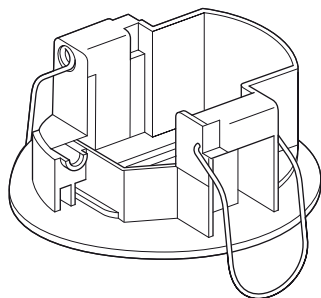
	12NC order code	System Power (W)	Power factor	Voltage (V)	Rel. humidity (%)
Trulifi Controller Unit EU 6002.0	912500102095				
Trulifi Controller Unit NA 6002.0	912500102282				
Trulifi Controller Unit EU 6800.00	912500103432				
Trulifi Controller Unit NA 6800.01	912500103433				
Trulifi Controller Unit Application 6800.20	912500103434				
Trulifi License 6800 ROAMING *	912500103435				
Trulifi License 6800 NMC *	912500103436				
Trulifi Access Point 6002.2	912500101791	4.2 (idle) / 38 (full load)	0.3 (idle) / 0.5 (full load)	100-240 V AC	20 - 90
Trulifi transceiver 6002.1	912500101812	4.6 (Access Point)		24 V DC (Access Point)	
Trulifi USB Key 6002.1	912500101792	3.5		5 V DC (USB)	
Trulifi POF cable EU 10 m	912500102094				
Trulifi POF cable NA 10 m	912500102283				

* For Trulifi License 6800 ROAMING and Trulifi License 6800 NMC license key please contact your local Signify representative





Ceiling holder (sold separately)



12NC order code: 912500101579

United States of America

Note with regards to installation of the Truli 6002 Access Point (in short: 'Access Point') and the Truli 6002 Transceiver (in short: 'Transceiver') in the United States of America:

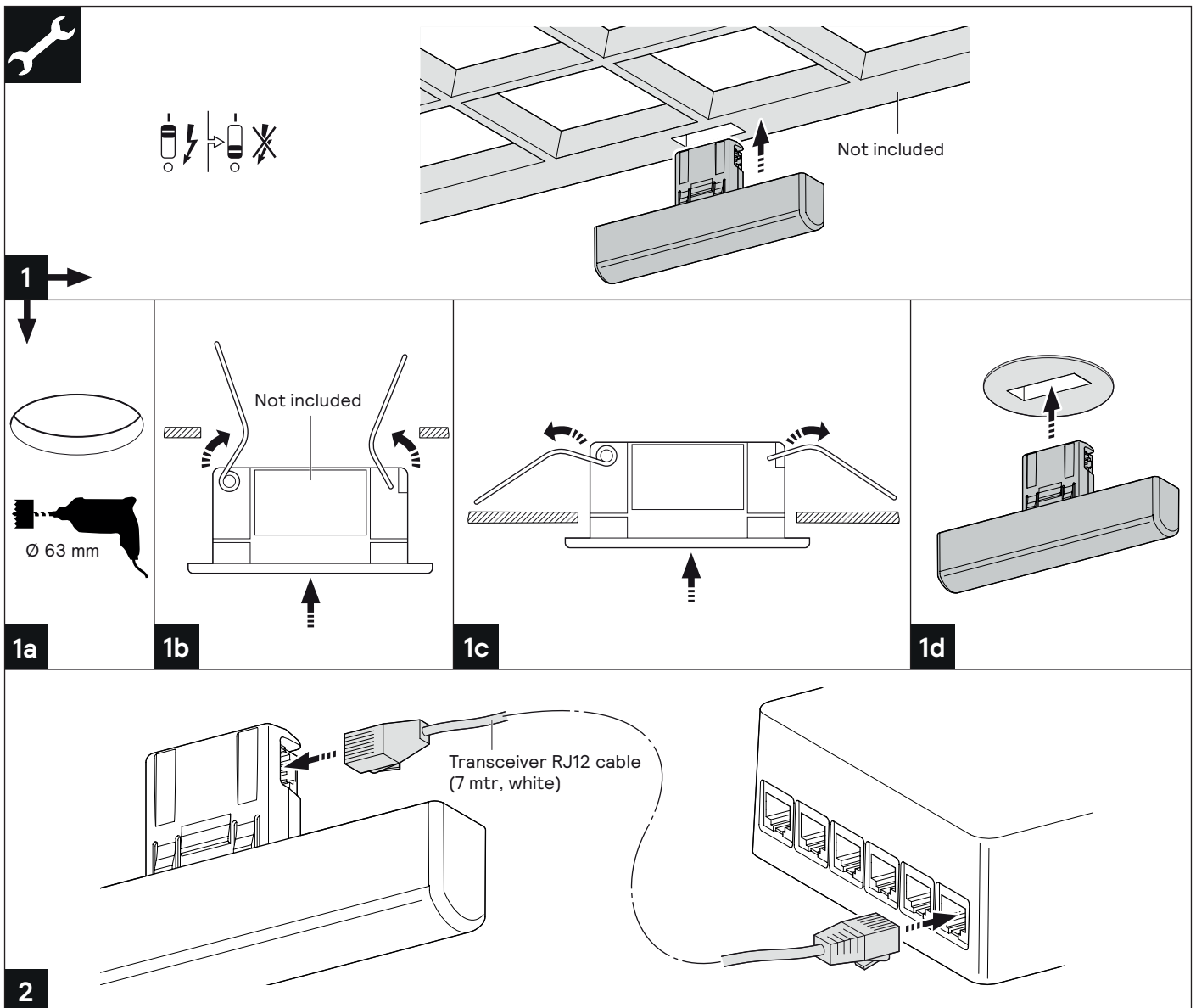
- The Access Point and Transceiver pass the acceptance criteria for the same test as defined in UL standard 2043, 4th edition. Compliance with UL2043 implies that the Access Point and Transceiver can be installed in building plenums in most US regions. Please refer to your local installer for installation options in accordance with local regulations.
- The Transceiver RJ12 cable (7 mtr, white) and POF cable (10 mtr) are both plenum-rated and can therefore be installed without the need for additional metal conduits.

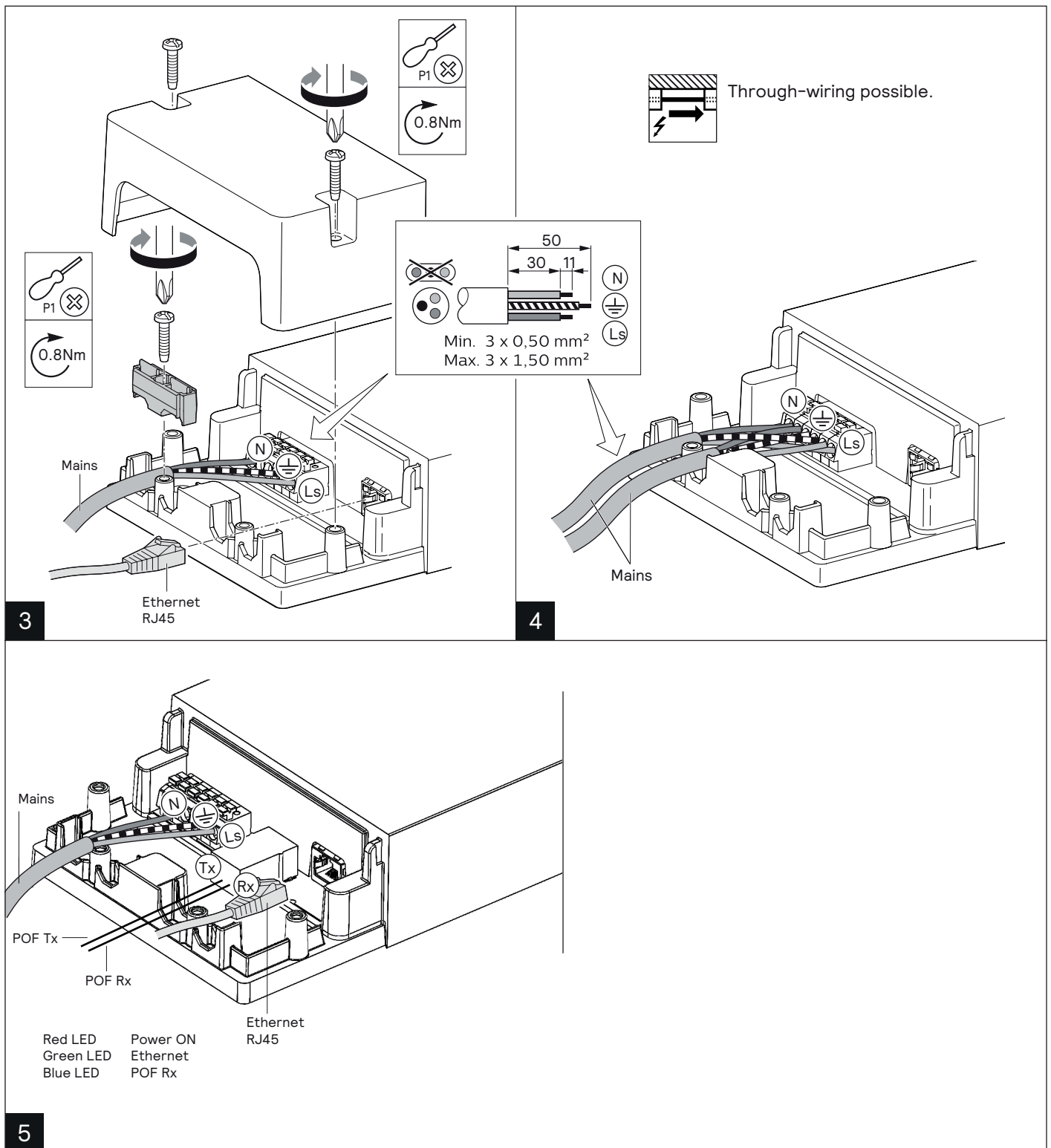


- The LiFi system shall be installed by a qualified electrician and wired in accordance with the latest IEEE electrical regulations or the national requirements.
- Access points and Controller shall be disconnected from mains power during installation and wiring.
- To avoid damaging the POF cable, a bend radius of at least 25 mm shall be observed during installation
- For Canada only: Canada ICES-003 (B) / NMB-003 (B)



ATTENTION
OBSERVE PRECAUTIONS
FOR HANDLING
ELECTROSTATIC
SENSITIVE DEVICES





Trulifi 6002.2 system - Installation instructions

4422-947-86223_460

Printed in The Netherlands

Data subject to change without notice

Keep for future reference: www.signify.com