

BrightSites

by  Signify

BrightSites C7001 luminaire with Gbit technology

Time to unlock the wireless connectivity potential of the lighting grid

Benefits:

- The wireless backhaul you need for fixed wireless access, 4G/5G densification, cameras and IoT broadband applications
- Avoids trenching and permits for high-capacity connectivity
- Self-optimizing, mesh network for high availability
- Good application coverage thanks to wide range of optics and tunable flux



BrightSites C7001 luminaire with Gbit technology

BrightSites C7001 luminaire with Gbit technology is a new point to multipoint 60GHz product that turns lighting grids into high-bandwidth communication infrastructures. It offers the advantages of a high-quality lighting system and mmWave spectrum - multi-gigabit capacity, immunity to interference and massive amounts of available spectrum. All in an easy-to-deploy solution for scalable, stress-free coverage extension and multi-path reliability across neighborhoods and business parks.

Lighting Specifications

Lumen output	4000lm – 6000lm
Color temperature	2200K, 2700K, 3000K or 4000K
Optics	Street Medium (MDM) Wide (MDW) Asymmetrical (MDA) Symmetric (MDS) Road Symmetric (DSW) Distribution Wet Road (DK)
CRI	>80 (3000K), >70 (2200, 2700, 3000 and 4000K)

RF Specifications

Topologies	PtP, PtMP, Mesh
Sectors	4x90° sector for 360° coverage Horizontal scanning: 90° Vertical scanning: 20°
Frequency & Duplexing	57-66 GHz, TDD/TDMA
Channels & Width	4x non-overlapping channels, 2,160 MHz wide, Any sector any of 4 channels, for optimal RF performance.
Network Synchronization	Onboard
Radio OTA Rate	Up to 3,800 Mbps per sector
Aggregate Throughput	Up to 3,800 Mbps per sector Up to 15 Gbps per node
Maximum Range	1,000ft / 300m

Electrical Specifications

Input voltage	220-240V AC, 50-60 Hz
Power consumption	Lighting: 28W to 116W RF: 55W no PoE Out, 90W with 35W PoE Out
Protection class	Isolation: Class II Surge protection: 6kV
Dimming	Yes, via Interact City

Other Specifications

Operating Temperature	-40° to +35°C
Weight	18kg
Dimension (diameter x height)	See next page
Material	Housing: PE; rotational moulded Front glass: Tempered flat glass
Impact Rating	IK08
Ingress Protection	IP65, rated for wet locations
Mounting Types	Suspended/single wire ø6-9 mm; top mounted ø60 mm
PoE Out	M-12 socket for PoE Out up to 35W (IEEE 802.3bt)

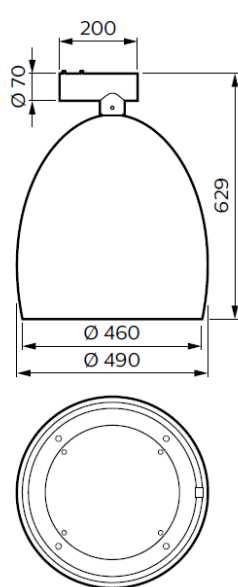
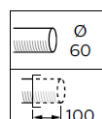
RF Specifications

Interface	1x M-12 1GbE with PoE Out (35W)
Ethernet Features	IEEE 802.1d transparent bridging Provider bridge - VLAN & VLAN stacking

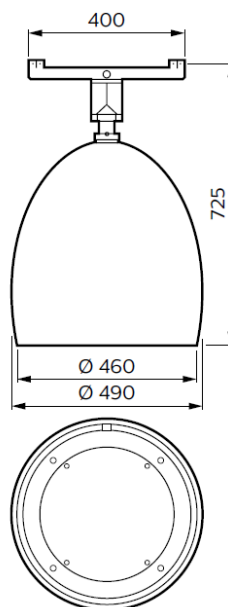
Other Specifications

Security	AES 128-bits OTA, GUI over HTTPS, CLI over SSH.
Management & Provisioning	In-band, Out-of-band management, Web GUI (one-pane configuration of local and remote units) & Embedded CLI, NETCONF

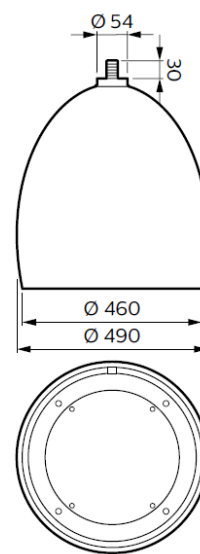
Drawings



BDS639
Top mounted Ø60 mm



BSS639
Suspended/single wire Ø6-9 mm



BSS639
Top 3/4" cylindrical pipe (on request)