

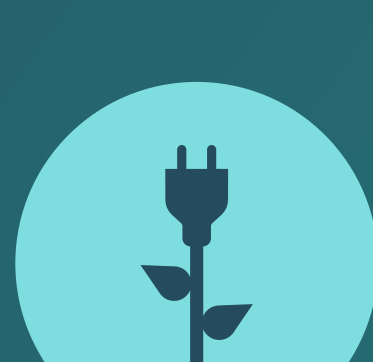
# Meet the new MasterConnect

## Simple, scalable, standardized, and sustainable

Add connectivity to your lighting in a simple and smart way with the updated Philips MasterConnect, a wireless, retrofit solution.



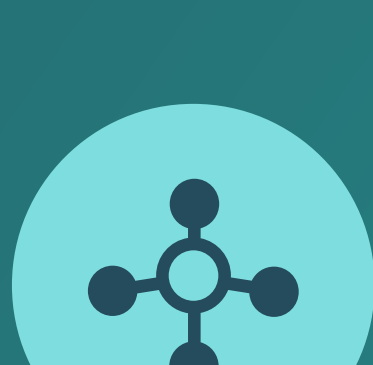
**Scalable – For every system**  
No need to rewire or upgrade existing components



**Sustainable – Energy Savings**  
Combine MasterConnect with LED lighting for significant energy savings



**Simple – Easy installation**  
No need for a gateway  
Intuitive mobile app guided set up



**Standardized – Open standards, more choice**  
Create every possible configuration using the same suite of components

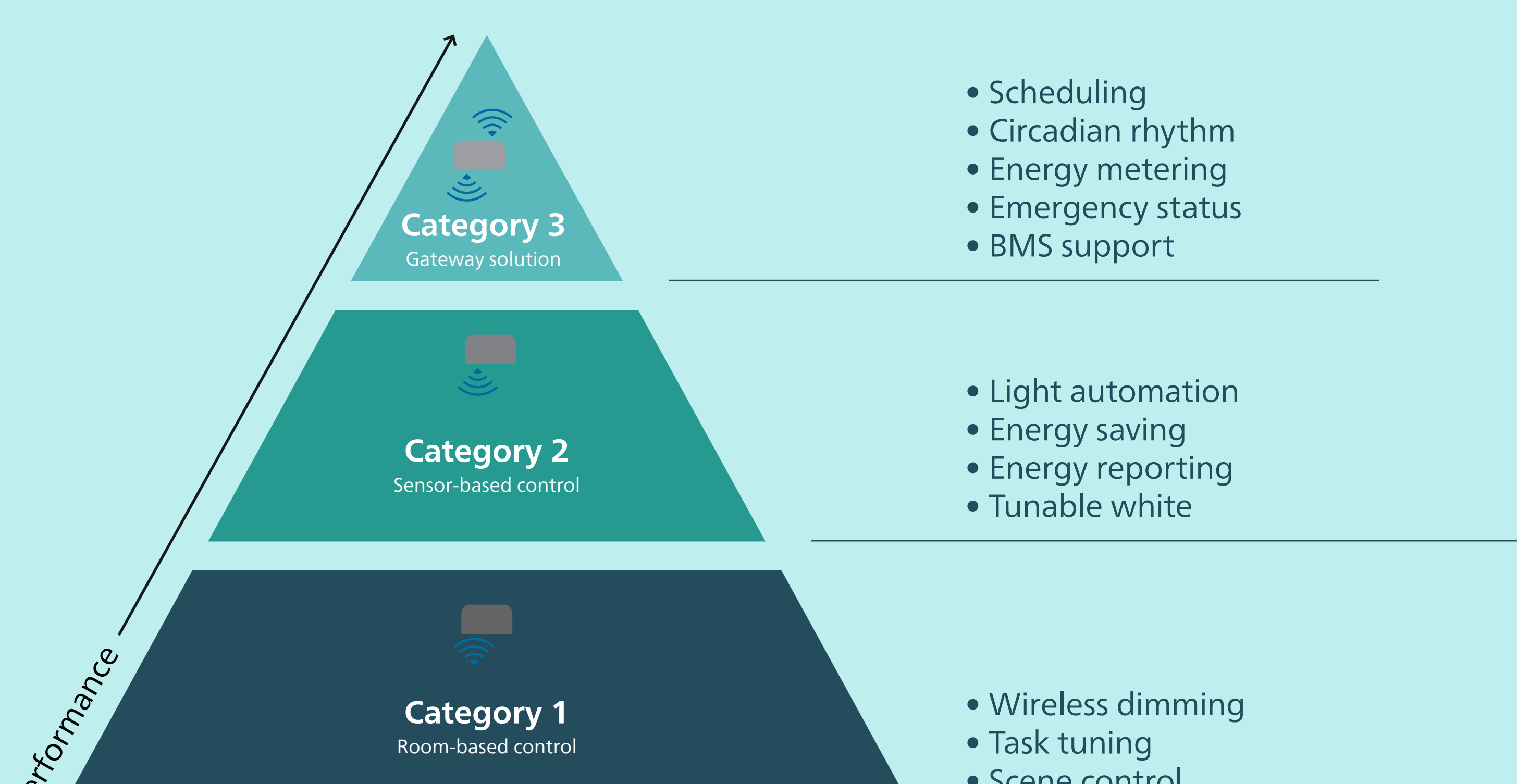


## One platform for all applications and configurations

Enjoy the amazing benefits of lighting automation in schools, offices, hospitals, shops, or even warehouse and assembly areas. Control everything with the Philips MasterConnect.

## Adjust MasterConnect to your needs

MasterConnect offers a fully scalable system. You are completely flexible in choosing your solution and ready for scaling up when needed.



## Your next step in connected lighting



- Easy, safe, and hassle-free installation
- Completely scalable
- Wireless components that are easy to design into your lighting network
- Create projects for all rooms in a building

[See all](#)

## Achieve seamless connectivity with the new wireless sensors for the industry segment!



EasyAir SNH210 MC

**New**



EasyAir SNHB210 MC

## Discover the MasterConnect portfolio

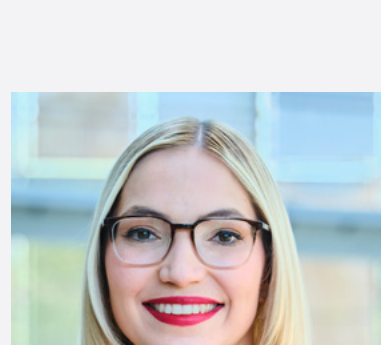


[See the complete portfolio](#)

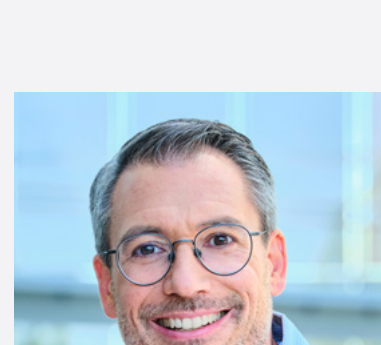
## Meet the Masters of Connected

Mastering connected lighting becomes even more easy with help from our specialists. Our Masters of Connected are specialists on different topics within Philips MasterConnect, and offer you insights, advice and tips and tricks about how to get the most out of your connected lighting system. Meet our Masters of Connected.

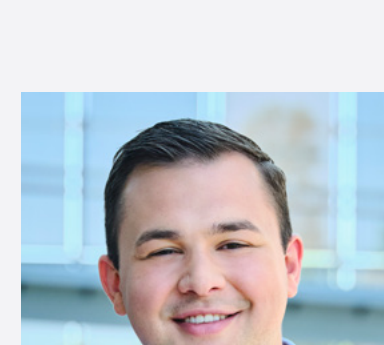
Contact the Masters at [masterconnect.info@signify.com](mailto:masterconnect.info@signify.com)



Magdalena



Ralph



Niclas

Take the next step in the connected lighting at [philips.com/masterconnectsystem](https://philips.com/masterconnectsystem)