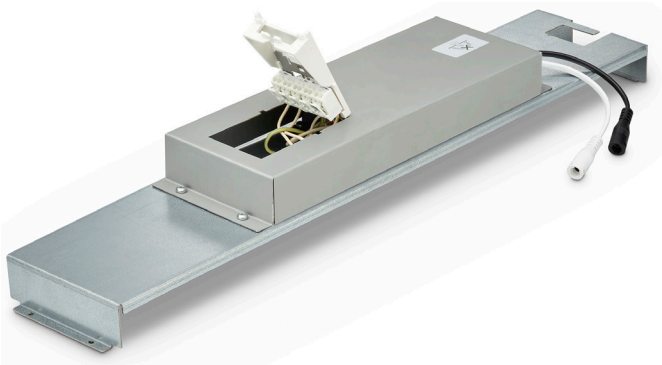


# NatureConnect

by Signify



## NatureConnect daylight W60L60 driver

NatureConnect daylight W60L60 driver is the driver for the NatureConnect daylight W60L60 LED panel.

### General Information

Type of driver	PSD (Power supply unit with DALI interface)
Maximum electrical power	33 W
Control interface	DALI
Protection class IEC	Safety class I
Ambient temperature range	+10 to +35 °C
Performance ambient temp. Tq	25 °C
Storage temperature	-20 to +60 °C
Ingress protection code	IP20
Mech. impact protection code	IK02
Glow-wire test	650 °C
CE mark	Yes
Warranty period	5 years
ENEC mark	-
UL mark	-
Warranty period	5 years

Constant light output (CLO) No

### Operating and Electrical

Input voltage	220-240 V
Input frequency	50 to 60 Hz
Input current	0.16 A
Inrush current	8 A
Inrush time	175 us

Products per MCB (type B 16A)	40
Power factor (min)	0.9
Surge Protection	1 kV DM and 2 kV CM

### Controls and User Interface

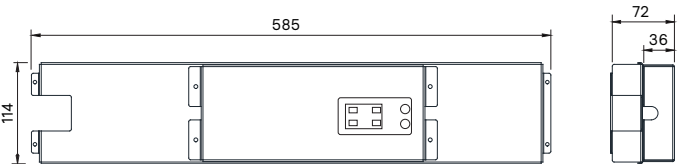
Lighting control	Compatible with NatureConnect control system
Number of DALI addresses	2

### Mechanical and Housing

Dimensions (LxWxH)	595 x 114 x 72 mm
Gear tray material	Steel
Net weight product	1.5 kg

### Product Data

910505103363	LP903 NC Daylight W60L60 PSD-driver
--------------	-------------------------------------



© 2023 Signify Holding.  
All rights reserved. The information provided herein is subject to change, without notice. Signify does not give any representation or warranty as to the accuracy or completeness of the information included herein and shall not be liable for any action in reliance thereon. The information presented in this document is not intended as any commercial offer and does not form part of any quotation or contract, unless otherwise agreed by Signify. All trademarks are owned by Signify Holding or their respective owners.