



# Trusted performance. Every day.

## Ledinaire panel gen5

The Philips Ledinaire panel Gen5 (RC065B/RC066B) range features a selection of popular off-the-shelf LED luminaires that offer Philips high quality at a competitive price. Reliable, energy-efficient and affordable, this latest generation of 600 x 600 mm, 620 x 620 mm, 300 x 1200 mm, and 600 x 1200 Ledinaire LED panel lights are designed for diffuse, comfortable lighting in a wide range of general lighting applications. Our range of Ledinaire panels lighting is also available with accessories for easy installation on different types of ceilings—just what you need.

### Benefits

- No risks, trusted performance
- Good quality, easy to use
- No confusion, easy product selection
- Innovative All-in multicolor and basic lighting control versions
- Broad range

### Features

- 3400 lm/ 3600 lm / 4100 lm: L80 at 50K hrs, L70 75K hrs and 3-year warranty
- IP20/IP40
- Connectors: white quick connectors and flywire
- Sizes: 60 x 60 mm / 62 x 62 mm / 30 x 120 mm / 60 x 120 mm
- Color rendering: CRI 80 at SDCM <5
- 3000K / 3500K / 4000K / 6500K
- PSU / PSD
- Efficacy: 120Lm/W
- All-in: 3000K, 3500K, and 4000K in one luminaire

# Ledinaire panel gen5

## Application

- Offices
- Healthcare
- Education
- Municipal buildings
- Retail

## Versions

Ledinaire panel G5 60x120



Ledinaire panel G5 62x62



Ledinaire Panel PSU All-in  
830\_835\_840 W60L60 OC



Ledinaire Panel All-in PSU 60x60



Ledinaire Panel G5 All in W30L120  
RTP



Ledinaire Panel PSU All-in  
830\_835\_840 W62L62

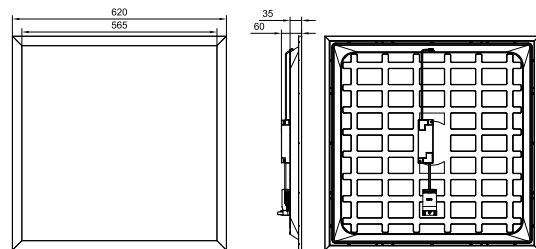
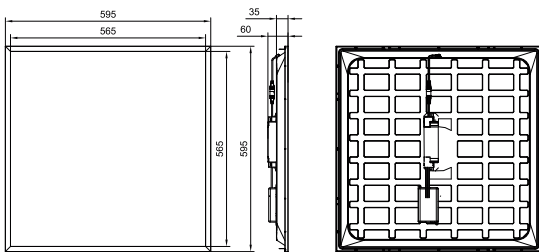
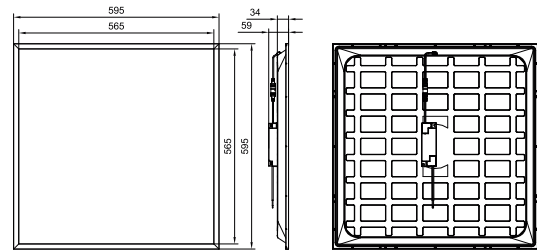
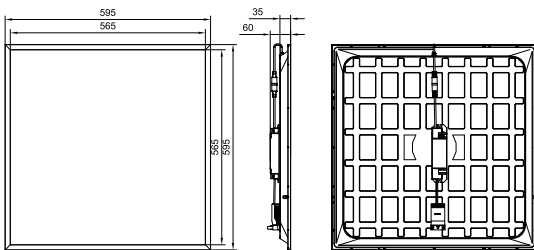
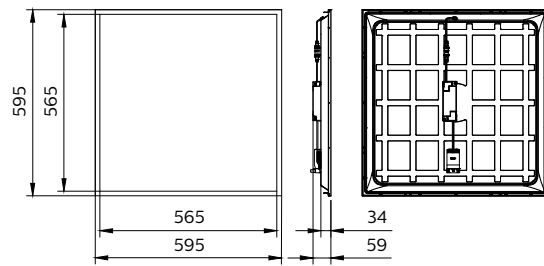
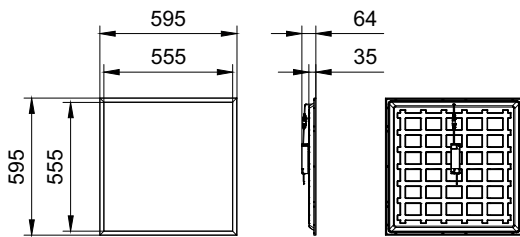
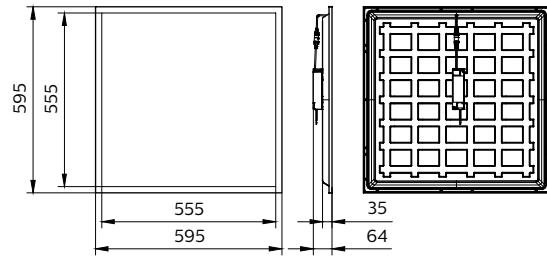
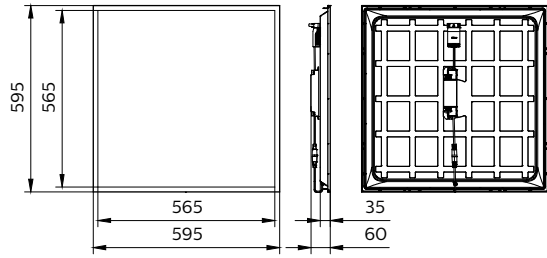


Ledinaire Panel RC065B Square  
ELR



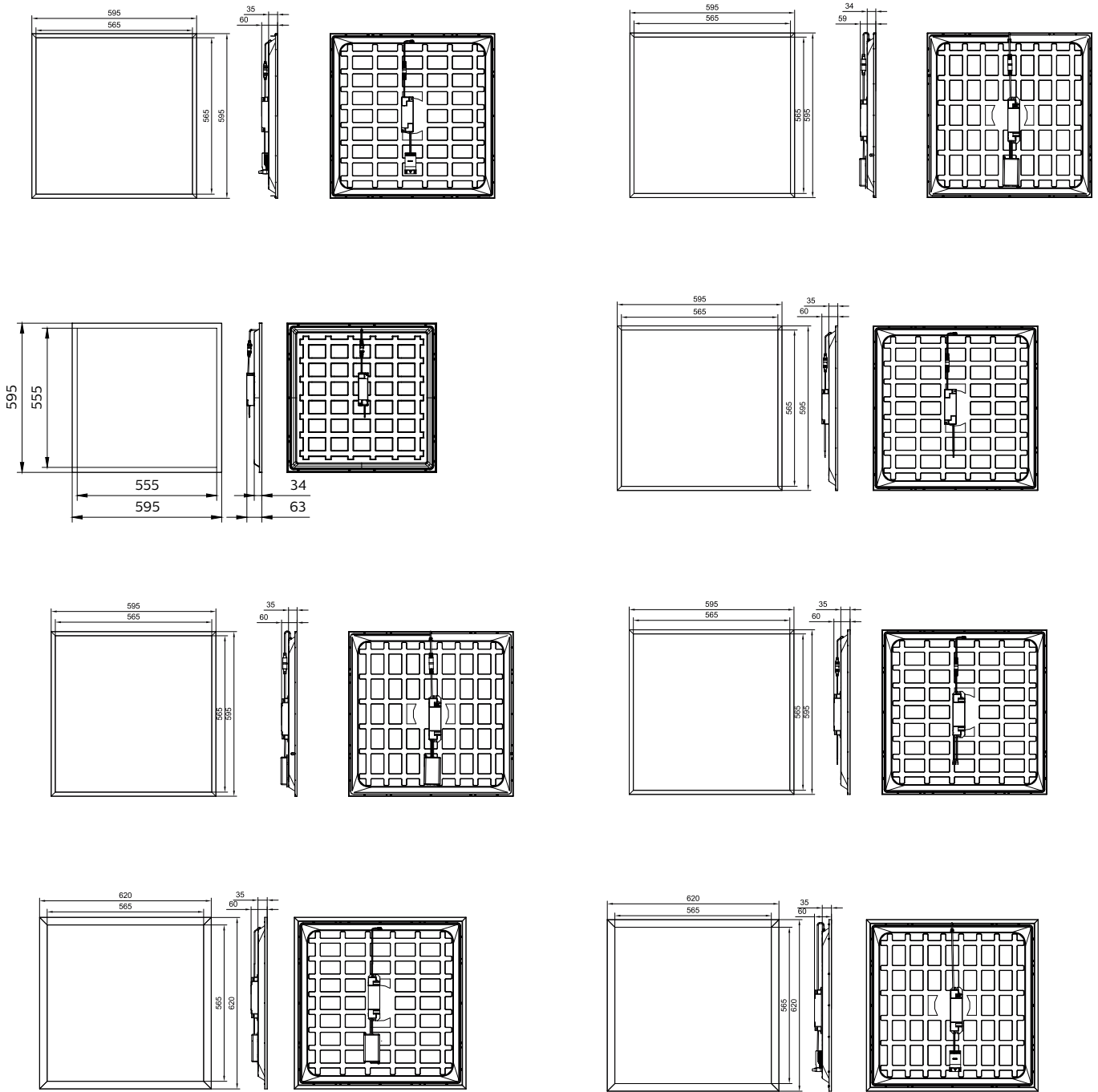
# Ledinaire panel gen5

## Dimensional drawing



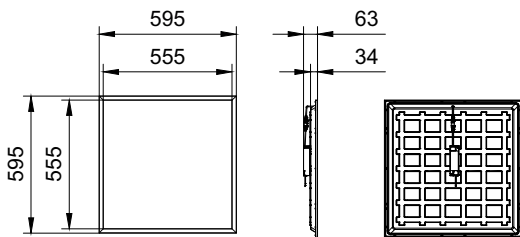
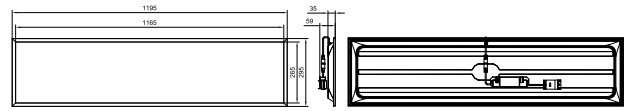
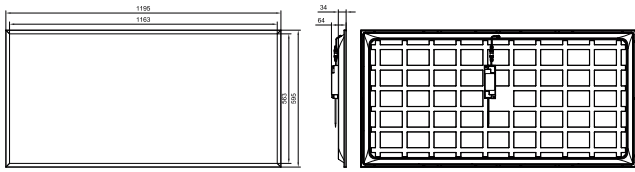
# Ledinaire panel gen5

## Dimensional drawing



# Ledinaire panel gen5

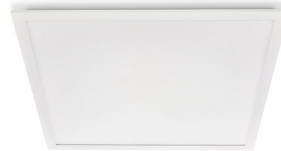
## Dimensional drawing



## Product details



Ledinaire Panel RC066B Square  
backside



Ledinaire Panel G5 RC066B-  
frontside-straight



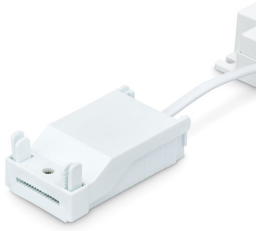
Ledinaire Panel G5 All in CCT  
Switch 3000K



Ledinaire Panel G5 Back housing  
PSU Flywire (CFW)

# Ledinaire panel gen5

## Product details



White Quick connector-closed



Panel flywires CFW + backside panel



Ledinaire Panel G5 All in CCT  
Switch PSU ON OFF Driver Open  
connector



Ledinaire Panel G5 PSD DALI  
Driver Open connector



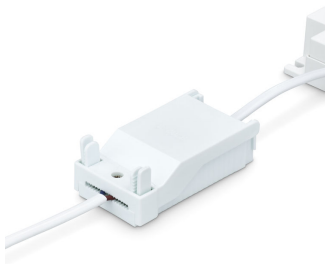
Ledinaire Panel G5 All in CCT  
Switch PSD ON OFF Driver Closed  
connector



Ledinaire Panel G5 PSD DALI  
Driver Closed connector



Ledinaire panel G5 frame and  
optical area 60x120



White Quick connector+wire-  
closed



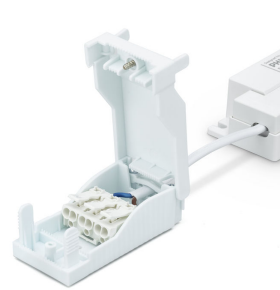
Ledinaire Panel Gen 5-RC065B  
W60L120-backside

# Ledinaire panel gen5

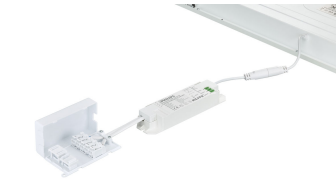
## Product details



White Quick connector +wire-open



White Quick connector-open



Ledinaire Panel G5 All in CCT  
Switch PSD ON OFF Driver Open  
connector



Ledinaire Panel RC065B G5  
30x120 Packaging



Panel flywires CFW



Ledinaire Panel G5 Back housing  
PSU Connector



Ledinaire Panel RC065B Square  
backside



Ledinaire Panel Gen 5-  
RC065B\_RC066B Square-  
backside-PSU driver and  
connector



Ledinaire Panel Gen 5-  
RC065B\_RC066B Square-  
backside



Ledinaire Panel RC065B G5 PSU  
30x120 Backside



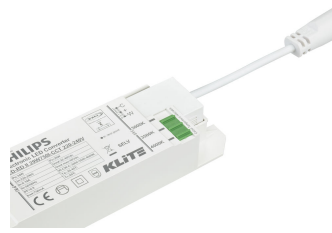
Ledinaire Panel G5 All in CCT  
Switch PSU ON OFF Driver Closed  
connector

# Ledinaire panel gen5

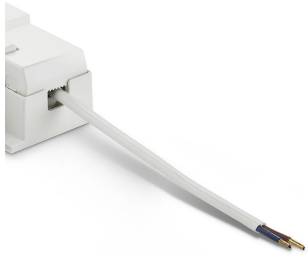
## Product details



Ledinaire Panel G5 All in CCT  
Switch 3500K



Ledinaire Panel G5 All in CCT  
Switch 4000K



Ledinaire Panel flywires CFW



Ledinaire Panel Gen 5-RC065B  
W60L120-backside-PSU driver  
and Flywire



Ledinaire Panel Gen 5-RC065B-RC066B Square-  
backside-PSU driver and  
connector



Ledinaire panel G5 frame and  
optical area 62x62

# Ledinaire panel gen5

## General Information

Driver included	Yes
Number of gear units	1 unit

## Light Technical

Color rendering index (CRI)	>80
Luminous Efficacy (rated) (Nom)	120 lm/W

## Operating and Electrical

Protection class IEC	Safety class II
Line Frequency	50 or 60 Hz
Suitable for random switching	Not applicable

## Mechanical and Housing

Housing Color	White
Ingress protection code	IP20/40

## Approval and Application

Ambient temperature range	-10 to +35 °C
CE mark	Yes
ENEC mark	-
Flammability mark	For mounting on normally flammable surfaces
Glow-wire test	Temperature 650 °C, duration 30 s

## Initial Performance (IEC Compliant)

Luminous flux tolerance	-10% / +10%
-------------------------	-------------

## Light Technical (1/2)

Order Code	Full Product Name	All-in Type	Beam angle of light source	Correlated Color Temperature (Nom)	Luminous Flux
911401844387	RC065B G5 34_36S/ 830_40 PSD 60x60 NOC SC	All-in, Multi Color Temperature	120 degree(s)	3000 K	3,400 lm
911401877485	RC065B G5 34_36S/ 830_40 PSD W60L60 OC SC	All-in, Multi Color Temperature	90 degree(s)	3000 K	3,400 lm
911401876985	RC065B G5 60S/840 PSU 60x120 NOC TPb CFW	-	120 degree(s)	4000 K	6,000 lm
911401876685	RC066B 34S/840 PSU W62L62 OC	-	90 degree(s)	4000 K	3,400 lm
911401876785	RC066B 34S/840 PSD W62L62 OC	-	90 degree(s)	4000 K	3,400 lm
911401877285	RC065B G5 34_36S/ 830_40 PSU W60L60 OC SC	All-in, Multi Color Temperature	90 degree(s)	3000 K	3,400 lm
911401877385	RC065B G5 34_36S/ 830_40 PSU 60x60 NOC SC	All-in, Multi Color Temperature	120 degree(s)	3000 K	3,400 lm
911401873685	RC065B G5 34S/840 PSU W60L60 OC CFW 2	-	90 degree(s)	4000 K	3,400 lm
911401873885	RC065B G5 34S/840 PSU W60L60 NOC CFW 2	-	120 degree(s)	4000 K	3,400 lm
911401874085	RC065B G5 34S/840 PSU W60L60 NOC CFW 2CL	-	120 degree(s)	4000 K	3,400 lm
911401874185	RC065B G5 34S/840 PSU W60L60 OC CFW 2 CL	-	90 degree(s)	4000 K	3,400 lm
911401875185	RC065B G5 34S/840 PSU W60L60 OC CFW	-	90 degree(s)	4000 K	3,400 lm
911401875285	RC065B G5 34S/840 PSU W60L60 OC SC	-	90 degree(s)	4000 K	3,400 lm
911401875385	RC065B G5 34S/865 PSU W60L60 OC CFW	-	90 degree(s)	6500 K	3,400 lm
911401875485	RC065B G5 34S/840 PSU W60L60 NOC CFW	-	120 degree(s)	4000 K	3,400 lm
911401875585	RC065B G5 34S/840 PSU W60L60 NOC SC	-	120 degree(s)	4000 K	3,400 lm
911401875685	RC065B G5 34S/865 PSU W60L60 NOC CFW	-	120 degree(s)	6500 K	3,400 lm
911401875785	RC065B G5 34S/840 PSD W60L60 OC CFW	-	90 degree(s)	4000 K	3,400 lm
911401875885	RC065B G5 34S/840 PSD W60L60 OC SC	-	90 degree(s)	4000 K	3,400 lm
911401875985	RC065B G5 41S/840 PSU W60L60 NOC CFW	-	120 degree(s)	4000 K	4,100 lm
911401876085	RC065B G5 41S/840 PSU W60L60 OC CFW	-	90 degree(s)	4000 K	4,100 lm
911401876185	RC065B G5 41S/840 PSU W60L60 NOC CFW CL	-	120 degree(s)	4000 K	4,100 lm

## Ledinaire panel gen5

Order Code	Full Product Name	All-in Type	Beam angle of light source	Correlated Color Temperature (Nom)	Luminous Flux
911401876285	RC065B G5 41S/840 PSU W60L60 OC CFW CL	-	90 degree(s)	4000 K	4,100 lm
911401876385	RC065B G5 34S/840 PSU W60L60 NOC CFW CL	-	120 degree(s)	4000 K	3,400 lm
911401876485	RC065B G5 34S/840 PSU W60L60 OC CFW CL	-	90 degree(s)	4000 K	3,400 lm
911401877085	RC065B G5 34S/840 PSU W60L60 OC 6PK SC	-	90 degree(s)	4000 K	3,400 lm
911401877585	RC065B G5 34_36S/830_40 PSU 30x120 OC SC	All-in, Multi Color Temperature	90 degree(s)	3000 K	3,400 lm
911401877185	RC066B 34_36S/830_40 PSU W62L62 OC	All-in, Multi Color Temperature	90 degree(s)	3000 K	3,400 lm
911401871288	RC065B G5 34S/840 PSU W60L60 OC CFW ELR	-	-	4000 K	3,400 lm
911401871388	RC065B G5 34S/840 PSU W60L60 NOC CFW ELR	-	-	4000 K	3,400 lm

### Light Technical (2/2)

Order Code	Full Product Name	Optic type	Order Code	Full Product Name	Optic type
911401844387	RC065B G5 34_36S/830_40 PSD 60x60 NOC SC	Beam angle 120°	911401875585	RC065B G5 34S/840 PSU W60L60 NOC SC	Beam angle 120°
911401877485	RC065B G5 34_36S/830_40 PSD W60L60 OC SC	Beam angle 90°	911401875685	RC065B G5 34S/865 PSU W60L60 NOC CFW	Beam angle 120°
911401876985	RC065B G5 60S/840 PSU 60x120 NOC TPb CFW	Beam angle 120°	911401875785	RC065B G5 34S/840 PSD W60L60 OC CFW	Beam angle 90°
911401876685	RC066B 34S/840 PSU W62L62 OC	Beam angle 90°	911401875885	RC065B G5 34S/840 PSD W60L60 OC SC	Beam angle 90°
911401876785	RC066B 34S/840 PSD W62L62 OC	Beam angle 90°	911401875985	RC065B G5 41S/840 PSU W60L60 NOC CFW	Beam angle 120°
911401877285	RC065B G5 34_36S/830_40 PSU W60L60 OC SC	Beam angle 90°	911401876085	RC065B G5 41S/840 PSU W60L60 OC CFW	Beam angle 90°
911401877385	RC065B G5 34_36S/830_40 PSU 60x60 NOC SC	Beam angle 120°	911401876185	RC065B G5 41S/840 PSU W60L60 NOC CFW CL	Beam angle 120°
911401873685	RC065B G5 34S/840 PSU W60L60 OC CFW 2	Beam angle 90°	911401876285	RC065B G5 41S/840 PSU W60L60 OC CFW CL	Beam angle 90°
911401873885	RC065B G5 34S/840 PSU W60L60 NOC CFW 2	Beam angle 120°	911401876385	RC065B G5 34S/840 PSU W60L60 NOC CFW CL	Beam angle 120°
911401874085	RC065B G5 34S/840 PSU W60L60 NOC CFW 2CL	Beam angle 120°	911401876485	RC065B G5 34S/840 PSU W60L60 OC CFW CL	Beam angle 90°
911401874185	RC065B G5 34S/840 PSU W60L60 OC CFW 2 CL	Beam angle 90°	911401877085	RC065B G5 34S/840 PSU W60L60 OC 6PK SC	Beam angle 90°
911401875185	RC065B G5 34S/840 PSU W60L60 OC CFW	Beam angle 90°	911401877585	RC065B G5 34_36S/830_40 PSU 30x120 OC SC	Beam angle 90°
911401875285	RC065B G5 34S/840 PSU W60L60 OC SC	Beam angle 90°	911401877185	RC066B 34_36S/830_40 PSU W62L62 OC	Beam angle 90°
911401875385	RC065B G5 34S/865 PSU W60L60 OC CFW	Beam angle 90°	911401871288	RC065B G5 34S/840 PSU W60L60 OC CFW ELR	Symmetrical
911401875485	RC065B G5 34S/840 PSU W60L60 NOC CFW	Beam angle 120°	911401871388	RC065B G5 34S/840 PSU W60L60 NOC CFW ELR	Symmetrical

### Operating and Electrical

Order Code	Full Product Name	Input Voltage	Power Consumption	Order Code	Full Product Name	Input Voltage	Power Consumption
911401844387	RC065B G5 34_36S/830_40 PSD 60x60 NOC SC	220 to 240 V	28 W	911401876785	RC066B 34S/840 PSD W62L62 OC	220 to 240 V	28 W
911401877485	RC065B G5 34_36S/830_40 PSD W60L60 OC SC	220 to 240 V	28 W	911401877285	RC065B G5 34_36S/830_40 PSU W60L60 OC SC	220 to 240 V	28 W
911401876985	RC065B G5 60S/840 PSU 60x120 NOC TPb CFW	220 to 240 V	50 W	911401877385	RC065B G5 34_36S/830_40 PSU 60x60 NOC SC	220 to 240 V	28 W
911401876685	RC066B 34S/840 PSU W62L62 OC	220 to 240 V	28 W	911401873685	RC065B G5 34S/840 PSU W60L60 OC CFW 2	220 to 240 V	28 W

## Ledinaire panel gen5

Order Code	Full Product Name	Input Voltage	Power	
			Consumption	
911401873885	RC065B G5 34S/840 PSU W60L60 NOC CFW 2	220 to 240 V	28 W	
911401874085	RC065B G5 34S/840 PSU W60L60 NOC CFW 2CL	220 to 240 V	28 W	
911401874185	RC065B G5 34S/840 PSU W60L60 OC CFW 2 CL	220 to 240 V	28 W	
911401875185	RC065B G5 34S/840 PSU W60L60 OC CFW	220 to 240 V	28 W	
911401875285	RC065B G5 34S/840 PSU W60L60 OC SC	220 to 240 V	28 W	
911401875385	RC065B G5 34S/865 PSU W60L60 OC CFW	220 to 240 V	28 W	
911401875485	RC065B G5 34S/840 PSU W60L60 NOC CFW	220 to 240 V	28 W	
911401875585	RC065B G5 34S/840 PSU W60L60 NOC SC	220 to 240 V	28 W	
911401875685	RC065B G5 34S/865 PSU W60L60 NOC CFW	220 to 240 V	28 W	
911401875785	RC065B G5 34S/840 PSD W60L60 OC CFW	220 to 240 V	28 W	
911401875885	RC065B G5 34S/840 PSD W60L60 OC SC	220 to 240 V	28 W	

Order Code	Full Product Name	Input Voltage	Power	
			Consumption	
911401875985	RC065B G5 41S/840 PSU W60L60 NOC CFW	220 to 240 V	34 W	
911401876085	RC065B G5 41S/840 PSU W60L60 OC CFW	220 to 240 V	34 W	
911401876185	RC065B G5 41S/840 PSU W60L60 NOC CFW CL	220 to 240 V	34 W	
911401876285	RC065B G5 41S/840 PSU W60L60 OC CFW CL	220 to 240 V	34 W	
911401876385	RC065B G5 34S/840 PSU W60L60 NOC CFW CL	220 to 240 V	28 W	
911401876485	RC065B G5 34S/840 PSU W60L60 OC CFW CL	220 to 240 V	28 W	
911401877085	RC065B G5 34S/840 PSU W60L60 OC 6PK SC	220 to 240 V	28 W	
911401877585	RC065B G5 34_36S/830_40 PSU 30x120 OC SC	220 to 240 V	28 W	
911401877185	RC066B 34_36S/830_40 PSU W62L62 OC	220 to 240 V	28 W	
911401871288	RC065B G5 34S/840 PSU W60L60 OC CFW ELR	220-240 V	28 W	
911401871388	RC065B G5 34S/840 PSU W60L60 NOC CFW ELR	220-240 V	28 W	

### Controls and Dimming

Order Code	Full Product Name	Dimmable	Maximum dim	
			level	
911401844387	RC065B G5 34_36S/830_40 PSD 60x60 NOC SC	Yes	1%	
911401877485	RC065B G5 34_36S/830_40 PSD W60L60 OC SC	Yes	1%	
911401876985	RC065B G5 60S/840 PSU 60x120 NOC TPb CFW	No	Not applicable	
911401876685	RC066B 34S/840 PSU W62L62 OC	No	Not applicable	
911401876785	RC066B 34S/840 PSD W62L62 OC	Yes	1%	
911401877285	RC065B G5 34_36S/830_40 PSU W60L60 OC SC	No	Not applicable	
911401877385	RC065B G5 34_36S/830_40 PSU 60x60 NOC SC	No	Not applicable	
911401873685	RC065B G5 34S/840 PSU W60L60 OC CFW 2	No	Not applicable	
911401873885	RC065B G5 34S/840 PSU W60L60 NOC CFW 2	No	Not applicable	
911401874085	RC065B G5 34S/840 PSU W60L60 NOC CFW 2CL	No	Not applicable	
911401874185	RC065B G5 34S/840 PSU W60L60 OC CFW 2 CL	No	Not applicable	
911401875185	RC065B G5 34S/840 PSU W60L60 OC CFW	No	Not applicable	
911401875285	RC065B G5 34S/840 PSU W60L60 OC SC	No	Not applicable	

Order Code	Full Product Name	Dimmable	Maximum dim	
			level	
911401875385	RC065B G5 34S/865 PSU W60L60 OC CFW	No	Not applicable	
911401875485	RC065B G5 34S/840 PSU W60L60 NOC CFW	No	Not applicable	
911401875585	RC065B G5 34S/840 PSU W60L60 NOC SC	No	Not applicable	
911401875685	RC065B G5 34S/865 PSU W60L60 NOC CFW	No	Not applicable	
911401875785	RC065B G5 34S/840 PSD W60L60 OC CFW	Yes	1%	
911401875885	RC065B G5 34S/840 PSD W60L60 OC SC	Yes	1%	
911401875985	RC065B G5 41S/840 PSU W60L60 NOC CFW	No	Not applicable	
911401876085	RC065B G5 41S/840 PSU W60L60 OC CFW	No	Not applicable	
911401876185	RC065B G5 41S/840 PSU W60L60 NOC CFW CL	No	Not applicable	
911401876285	RC065B G5 41S/840 PSU W60L60 OC CFW CL	No	Not applicable	
911401876385	RC065B G5 34S/840 PSU W60L60 NOC CFW CL	No	Not applicable	
911401876485	RC065B G5 34S/840 PSU W60L60 OC CFW CL	No	Not applicable	

## Ledinaire panel gen5

Order Code	Full Product Name	Maximum dim	
		Dimmable	level
911401877085	RC065B G5 34S/840 PSU W60L60 OC 6PK SC	No	Not applicable
911401877585	RC065B G5 34_36S/830_40 PSU 30x120 OC SC	No	Not applicable
911401877185	RC066B 34_36S/830_40 PSU W62L62 OC	No	Not applicable

Order Code	Full Product Name	Maximum dim	
		Dimmable	level
911401871288	RC065B G5 34S/840 PSU W60L60 OC CFW ELR	No	-
911401871388	RC065B G5 34S/840 PSU W60L60 NOC CFW ELR	No	-

### Mechanical and Housing

Order Code	Full Product Name	Mech. impact protection code	
911401844387	RC065B G5 34_36S/830_40 PSD 60x60 NOC SC	IK02	
911401877485	RC065B G5 34_36S/830_40 PSD W60L60 OC SC	IK02	
911401876985	RC065B G5 60S/840 PSU 60x120 NOC TPb CFW	IK02	
911401876685	RC066B 34S/840 PSU W62L62 OC	IK02	
911401876785	RC066B 34S/840 PSD W62L62 OC	IK02	
911401877285	RC065B G5 34_36S/830_40 PSU W60L60 OC SC	IK02	
911401877385	RC065B G5 34_36S/830_40 PSU 60x60 NOC SC	IK02	
911401873685	RC065B G5 34S/840 PSU W60L60 OC CFW 2	IK02	
911401873885	RC065B G5 34S/840 PSU W60L60 NOC CFW 2	IK02	
911401874085	RC065B G5 34S/840 PSU W60L60 NOC CFW 2CL	IK02	
911401874185	RC065B G5 34S/840 PSU W60L60 OC CFW 2 CL	IK02	
911401875185	RC065B G5 34S/840 PSU W60L60 OC CFW	IK02	
911401875285	RC065B G5 34S/840 PSU W60L60 OC SC	IK02	
911401875385	RC065B G5 34S/865 PSU W60L60 OC CFW	IK02	
911401875485	RC065B G5 34S/840 PSU W60L60 NOC CFW	IK02	

Order Code	Full Product Name	Mech. impact protection code	
911401875585	RC065B G5 34S/840 PSU W60L60 NOC SC	IK02	
911401875685	RC065B G5 34S/865 PSU W60L60 NOC CFW	IK02	
911401875785	RC065B G5 34S/840 PSD W60L60 OC CFW	IK02	
911401875885	RC065B G5 34S/840 PSD W60L60 OC SC	IK02	
911401875985	RC065B G5 41S/840 PSU W60L60 NOC CFW	IK02	
911401876085	RC065B G5 41S/840 PSU W60L60 OC CFW	IK02	
911401876185	RC065B G5 41S/840 PSU W60L60 NOC CFW CL	IK02	
911401876285	RC065B G5 41S/840 PSU W60L60 OC CFW CL	IK02	
911401876385	RC065B G5 34S/840 PSU W60L60 NOC CFW CL	IK02	
911401876485	RC065B G5 34S/840 PSU W60L60 OC CFW CL	IK02	
911401877085	RC065B G5 34S/840 PSU W60L60 OC 6PK SC	IK02	
911401877585	RC065B G5 34_36S/830_40 PSU 30x120 OC SC	IK02	
911401877185	RC066B 34_36S/830_40 PSU W62L62 OC	IK02	
911401871288	RC065B G5 34S/840 PSU W60L60 OC CFW ELR	IK03	
911401871388	RC065B G5 34S/840 PSU W60L60 NOC CFW ELR	IK03	

### Emergency Operation

Order Code	Full Product Name	Central	
		Emergency	Emergency lighting
911401844387	RC065B G5 34_36S/830_40 PSD 60x60 NOC SC	No	-
911401877485	RC065B G5 34_36S/830_40 PSD W60L60 OC SC	No	-
911401876985	RC065B G5 60S/840 PSU 60x120 NOC TPb CFW	No	-
911401876685	RC066B 34S/840 PSU W62L62 OC	No	-
911401876785	RC066B 34S/840 PSD W62L62 OC	No	-
911401877285	RC065B G5 34_36S/830_40 PSU W60L60 OC SC	No	-
911401877385	RC065B G5 34_36S/830_40 PSU 60x60 NOC SC	No	-
911401873685	RC065B G5 34S/840 PSU W60L60 OC CFW 2	No	-
911401873885	RC065B G5 34S/840 PSU W60L60 NOC CFW 2	No	-

Order Code	Full Product Name	Central	
		Emergency	Emergency lighting
911401874085	RC065B G5 34S/840 PSU W60L60 NOC CFW 2CL	No	-
911401874185	RC065B G5 34S/840 PSU W60L60 OC CFW 2 CL	No	-
911401875185	RC065B G5 34S/840 PSU W60L60 OC CFW	No	-
911401875285	RC065B G5 34S/840 PSU W60L60 OC SC	No	-
911401875385	RC065B G5 34S/865 PSU W60L60 OC CFW	No	-
911401875485	RC065B G5 34S/840 PSU W60L60 NOC CFW	No	-
911401875585	RC065B G5 34S/840 PSU W60L60 NOC SC	No	-
911401875685	RC065B G5 34S/865 PSU W60L60 NOC CFW	No	-
911401875785	RC065B G5 34S/840 PSD W60L60 OC CFW	No	-

## Ledinaire panel gen5

Order Code	Full Product Name	Central	
		Emergency	Emergency lighting
911401875885	RC065B G5 34S/840 PSD W60L60 OC SC	No	-
911401875985	RC065B G5 41S/840 PSU W60L60 NOC CFW	No	-
911401876085	RC065B G5 41S/840 PSU W60L60 OC CFW	No	-
911401876185	RC065B G5 41S/840 PSU W60L60 NOC CFW CL	No	-
911401876285	RC065B G5 41S/840 PSU W60L60 OC CFW CL	No	-
911401876385	RC065B G5 34S/840 PSU W60L60 NOC CFW CL	No	-
911401876485	RC065B G5 34S/840 PSU W60L60 OC CFW CL	No	-
911401877085	RC065B G5 34S/840 PSU W60L60 OC 6PK SC	No	-

Order Code	Full Product Name	Central	
		Emergency	Emergency lighting
911401877585	RC065B G5 34_36S/830_40 PSU 30x120 OC SC	No	-
911401877185	RC066B 34_36S/830_40 PSU W62L62 OC	No	-
911401871288	RC065B G5 34S/840 PSU W60L60 OC CFW ELR	-	Self-contained emergency lighting is possible when used with a compatible battery kit accessory
911401871388	RC065B G5 34S/840 PSU W60L60 NOC CFW ELR	-	Self-contained emergency lighting is possible when used with a compatible battery kit accessory

### Approval and Application

Order Code	Full Product Name	Flickering value (PstLM) - Flickering value as per EN 61000-3-3	
911401844387	RC065B G5 34_36S/830_40 PSD 60x60 NOC SC	1	
911401877485	RC065B G5 34_36S/830_40 PSD W60L60 OC SC	1	
911401876985	RC065B G5 60S/840 PSU 60x120 NOC TPb CFW	1	
911401876685	RC066B 34S/840 PSU W62L62 OC	1	
911401876785	RC066B 34S/840 PSD W62L62 OC	1	
911401877285	RC065B G5 34_36S/830_40 PSU W60L60 OC SC	1	
911401877385	RC065B G5 34_36S/830_40 PSU 60x60 NOC SC	1	
911401873685	RC065B G5 34S/840 PSU W60L60 OC CFW 2	1	
911401873885	RC065B G5 34S/840 PSU W60L60 NOC CFW 2	1	
911401874085	RC065B G5 34S/840 PSU W60L60 NOC CFW 2CL	1	
911401874185	RC065B G5 34S/840 PSU W60L60 OC CFW 2 CL	1	
911401875185	RC065B G5 34S/840 PSU W60L60 OC CFW	1	
911401875285	RC065B G5 34S/840 PSU W60L60 OC SC	1	
911401875385	RC065B G5 34S/86S PSU W60L60 OC CFW	1	
911401875485	RC065B G5 34S/840 PSU W60L60 NOC CFW	1	

Order Code	Full Product Name	Flickering value (PstLM) - Flickering value as per EN 61000-3-3	
911401875585	RC065B G5 34S/840 PSU W60L60 NOC SC	1	
911401875685	RC065B G5 34S/86S PSU W60L60 NOC CFW	1	
911401875785	RC065B G5 34S/840 PSD W60L60 OC CFW	1	
911401875885	RC065B G5 34S/840 PSD W60L60 OC SC	1	
911401875985	RC065B G5 41S/840 PSU W60L60 NOC CFW	1	
911401876085	RC065B G5 41S/840 PSU W60L60 OC CFW	1	
911401876185	RC065B G5 41S/840 PSU W60L60 NOC CFW CL	1	
911401876285	RC065B G5 41S/840 PSU W60L60 OC CFW CL	1	
911401876385	RC065B G5 34S/840 PSU W60L60 NOC CFW CL	1	
911401876485	RC065B G5 34S/840 PSU W60L60 OC CFW CL	1	
911401877085	RC065B G5 34S/840 PSU W60L60 OC 6PK SC	1	
911401877585	RC065B G5 34_36S/830_40 PSU 30x120 OC SC	1	
911401877185	RC066B 34_36S/830_40 PSU W62L62 OC	1	
911401871288	RC065B G5 34S/840 PSU W60L60 OC CFW ELR	-	
911401871388	RC065B G5 34S/840 PSU W60L60 NOC CFW ELR	-	

### Initial Performance (IEC Compliant)

Order Code	Full Product Name	Initial chromaticity
911401844387	RC065B G5 34_36S/830_40 PSD 60x60 NOC SC	(0.43, 0.40) SDCM ≤5 ; (0.38, 0.38) SDCM ≤5
911401877485	RC065B G5 34_36S/830_40 PSD W60L60 OC SC	(0.43, 0.40) SDCM ≤5 ; (0.38, 0.38) SDCM ≤5
911401876985	RC065B G5 60S/840 PSU 60x120 NOC TPb CFW	(0.38, 0.38) SDCM ≤5
911401876685	RC066B 34S/840 PSU W62L62 OC	(0.38, 0.38) SDCM ≤5

Order Code	Full Product Name	Initial chromaticity
911401876785	RC066B 34S/840 PSD W62L62 OC	(0.38, 0.38) SDCM ≤5
911401877285	RC065B G5 34_36S/830_40 PSU W60L60 OC SC	(0.43, 0.40) SDCM ≤5 ; (0.38, 0.38) SDCM ≤5
911401877385	RC065B G5 34_36S/830_40 PSU 60x60 NOC SC	(0.43, 0.40) SDCM ≤5 ; (0.38, 0.38) SDCM ≤5
911401873685	RC065B G5 34S/840 PSU W60L60 OC CFW 2	(0.38, 0.38) SDCM ≤5

## Ledinaire panel gen5

Order Code	Full Product Name	Initial chromaticity
911401873885	RC065B G5 34S/840 PSU W60L60 NOC CFW 2	(0.38, 0.38) SDCM ≤5
911401874085	RC065B G5 34S/840 PSU W60L60 NOC CFW 2CL	(0.38, 0.38) SDCM ≤5
911401874185	RC065B G5 34S/840 PSU W60L60 OC CFW 2 CL	(0.38, 0.38) SDCM ≤5
911401875185	RC065B G5 34S/840 PSU W60L60 OC CFW	(0.38, 0.38) SDCM ≤5
911401875285	RC065B G5 34S/840 PSU W60L60 OC SC	(0.38, 0.38) SDCM ≤5
911401875385	RC065B G5 34S/865 PSU W60L60 OC CFW	(0.31, 0.33) SDCM ≤5
911401875485	RC065B G5 34S/840 PSU W60L60 NOC CFW	(0.38, 0.38) SDCM ≤5
911401875585	RC065B G5 34S/840 PSU W60L60 NOC SC	(0.38, 0.38) SDCM ≤5
911401875685	RC065B G5 34S/865 PSU W60L60 NOC CFW	(0.31, 0.33) SDCM ≤5
911401875785	RC065B G5 34S/840 PSD W60L60 OC CFW	(0.38, 0.38) SDCM ≤5
911401875885	RC065B G5 34S/840 PSD W60L60 OC SC	(0.38, 0.38) SDCM ≤5

Order Code	Full Product Name	Initial chromaticity
911401875985	RC065B G5 41S/840 PSU W60L60 NOC CFW	(0.38, 0.38) SDCM ≤5
911401876085	RC065B G5 41S/840 PSU W60L60 OC CFW	(0.38, 0.38) SDCM ≤5
911401876185	RC065B G5 41S/840 PSU W60L60 NOC CFW CL	(0.38, 0.38) SDCM ≤5
911401876285	RC065B G5 41S/840 PSU W60L60 OC CFW CL	(0.38, 0.38) SDCM ≤5
911401876385	RC065B G5 34S/840 PSU W60L60 NOC CFW CL	(0.38, 0.38) SDCM ≤5
911401876485	RC065B G5 34S/840 PSU W60L60 OC CFW CL	(0.38, 0.38) SDCM ≤5
911401877085	RC065B G5 34S/840 PSU W60L60 OC 6PK SC	(0.38, 0.38) SDCM ≤5
911401877585	RC065B G5 34_36S/830_40 PSU 30x120 OC SC	(0.43, 0.40) SDCM ≤5 ; (0.38, 0.38) SDCM ≤5
911401877185	RC066B 34_36S/830_40 PSU W62L62 OC	(0.43, 0.40) SDCM ≤5 ; (0.38, 0.38) SDCM ≤5
911401871288	RC065B G5 34S/840 PSU W60L60 OC CFW ELR	(0.380,0.380)SDCM<5
911401871388	RC065B G5 34S/840 PSU W60L60 NOC CFW ELR	(0.380,0.380)SDCM<5

